

Appendix B: Service Delivery Indicators

Amendments have been made to the figures reported under **BVPI 149**. The guidance and implementation of the reporting of this statistic now allows for the removal of all properties from 2005/06 onwards. This is to be considered especially in relation to yearly comparisons as previous years statistics contain domestic properties.

Please be aware that currently for 2006-7 there is 1 outstanding FDR1 (incident report, April to June 2006) that may affect the following data once complete (vehicle fire).

BV 142(ii) - primary fires⁽¹⁾ per 10,000 population⁽²⁾

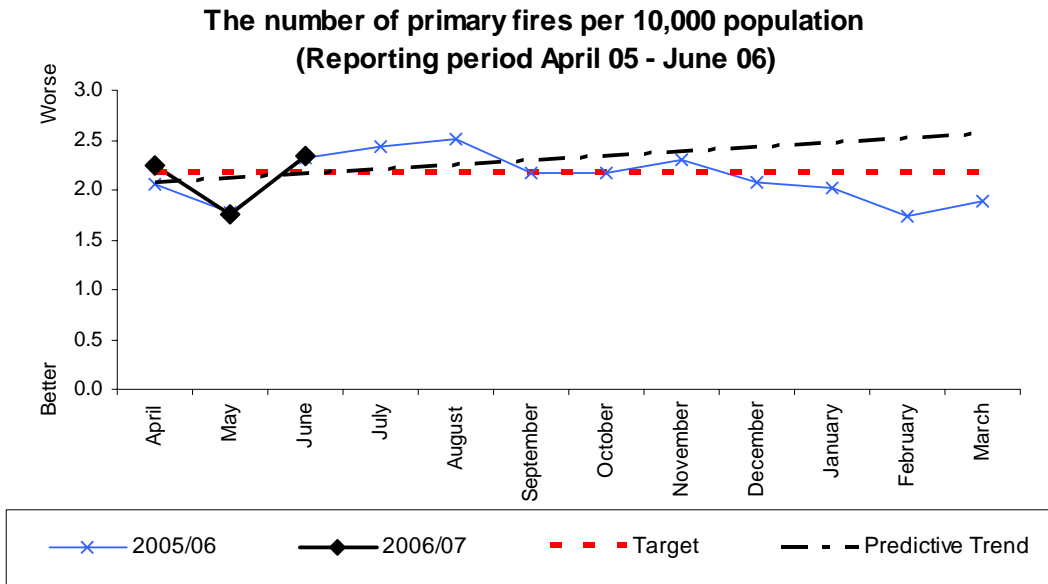
	Population		No. of fires	Fires per 10,000 pop.				REGIONAL ESTIMATED SUBMISSION 2005/06	SHROPSHIRE ESTIMATED 2006/07 based on Q1
	mid 2004 (thousands)	2004/05 ⁽³⁾		2004/05 ⁽³⁾	2003/04	2002/03	2001/02		
1 Isle of Wight	138.4	263	19.0	23.3	25.0	29.3	30.5	HEREFORD & WORCESTER 18.2	
2 Hampshire	1,663.1	3,175	19.1	23.2	24.3	26.3	24.5		
3 Hereford & Worcester	729.8	1,486	20.4	23.8	25.0	29.0	27.2		
4 Essex	1,635.6	3,335	20.4	25.5	27.6	28.7	29.4		
5 Suffolk	683.7	1,405	20.5	25.0	22.4	24.6	24.3		
6 Wiltshire	626.8	1,333	21.3	22.5	23.1	23.7	24.6		
7 Dorset	700.4	1,524	21.8	26.1	27.6	27.8	26.4		
8 North Yorkshire	764.9	1,673	21.9	25.3	26.5	27.6	27.7		
9 Norfolk	816.5	1,788	21.9	27.1	29.2	28.6	28.3		
10 Hertfordshire	1,041.3	2,284	21.9	26.2	26.2	27.2	29.2		
11 Surrey	1,067.2	2,389	22.4	24.3	23.8	23.2	21.9		
12 London	7,429.2	16,902	22.8	26.5	26.9	29.9	29.9		
UPPER QUARTILE									
13 Leicestershire	945.5	2,159	22.8	27.8	31.6	34.0	31.3	STAFFORDSHIRE 24.7 WARWICKSHIRE 25.7 SHROPSHIRE 25.4 → 25.4	
14 Derbyshire	979.2	2,258	23.1	26.8	30.2	29.3	26.5		
15 West Sussex	761.9	1,769	23.2	27.8	26.8	29.3	26.8		
16 Cornwall	515.3	1,231	23.9	24.4	29.2	29.3	28.2		
17 Royal Berkshire	805.8	1,928	23.9	27.6	29.8	32.6	32.7		
18 Oxfordshire	619.8	1,495	24.1	26.0	30.2	30.9	31.6		
19 Somerset	512.5	1,251	24.4	32.9	36.9	35.8	32.9		
20 Devon	1,101.6	2,712	24.6	27.6	29.2	30.7	30.7		
21 Staffordshire	1,050.6	2,621	24.9	30.2	29.2	30.8	29.8		
22 Lincolnshire	673.5	1,755	26.1	28.8	31.3	28.6	27.3		
23 Warwickshire	525.5	1,372	26.1	30.1	33.6	30.3	29.8		
24 Shropshire	449.0	1,187	26.4	28.7	32.6	36.2	34.0		
25 Kent	1,610.3	4,278	26.6	30.3	31.4	32.5	34.8		
26 Cambridgeshire	737.9	2,055	27.8	33.1	33.6	33.5	31.9		
27 Gloucestershire	572.8	1,627	28.4	33.2	31.9	30.7	29.3		
28 Cumbria	494.8	1,426	28.8	32.9	34.2	34.2	35.0		
29 Buckinghamshire	695.3	2,014	29.0	33.7	33.9	38.7	37.5		
30 Bedfordshire & Luton	576.2	1,714	29.7	31.9	38.3	35.9	35.7		
31 East Sussex	748.6	2,267	30.3	34.9	35.5	38.0	38.7		
32 Northumberland	310.8	964	31.0	38.9	37.5	38.5	35.1		
33 Cheshire	992.6	3,122	31.5	33.0	33.5	34.7	30.8		
34 County Durham & Darlington	595.4	1,915	32.2	37.6	38.8	40.5	38.6		
35 Northamptonshire	646.7	2,098	32.4	39.8	40.9	42.0	39.8		
36 Avon	1,006.6	3,330	33.1	41.2	43.7	49.1	42.7		
37 Lancashire	1,434.9	4,917	34.3	39.2	37.7	41.0	39.4		
38 West Yorkshire	2,108.0	7,542	35.8	46.3	52.7	55.8	46.7		
39 West Midlands	2,579.2	9,389	36.4	43.3	46.6	50.1	47.4		
40 Nottinghamshire	1,034.7	4,104	39.7	49.3	57.4	54.1	41.8		
41 South Yorkshire	1,278.4	5,086	39.8	47.4	49.1	43.8	39.5		
42 Humberside	887.5	3,556	40.1	50.8	48.8	43.9	38.8		
43 Cleveland	553.3	2,454	44.4	54.9	63.0	64.7	56.7		
44 Tyne & Wear	1,085.6	4,888	45.0	53.0	57.5	60.0	54.4		
45 Greater Manchester	2,539.0	12,203	48.1	54.8	60.5	64.8	58.9		
46 Merseyside	1,365.8	6,773	49.6	57.0	60.0	61.1	59.8		
WEST MIDLANDS 32.4									

⁽¹⁾ As returned on form FDRI.
⁽²⁾ Source: ONS 2004 mid-year estimates.
⁽³⁾ Provisional 2005 data.

Source: DCLG Fire Statistics.

Service Delivery Indicators

142ii



Monthly Stats (per 10,000 population)

	Apr	May	June	July	Aug	Sept	Oct	Nov	Dec	Jan	Feb	Mar	YTD
2006	2.25	1.76	2.34										6.35
2005	2.05	1.78	2.32	2.43	2.52	2.16	2.16	2.29	2.07	2.03	1.74	1.89	25.44
2004	1.9	2.5	2.8	2.6	2.4	2.8	2.5	2.2	2.2	2.2	1.7	1.9	27.7

Monthly Stats (actual incidents)

	Apr	May	June	July	Aug	Sept	Oct	Nov	Dec	Jan	Feb	Mar	YTD
2006	101	79	105										285
2005	92	80	104	109	113	97	97	103	93	91	78	85	1142
2004	83	112	125	114	107	126	112	99	97	98	74	87	1239

Analysis

Yearly target	Will Authority achieve target? (Estimate using predictive trend)	Have current yearly results (including predictive trend) improved since last year?
26	√	X

Commentary

The number of primary fires is slightly higher than last year, but does follow the same trend, thus giving a predicted outturn of similar figures.

BV 142(iii) - accidental fires⁽¹⁾ in dwellings⁽²⁾ per 10,000 dwellings⁽³⁾

	Domestic properties		Fires per 10,000 dwellings					REGIONAL ESTIMATED SUBMISSION	SHROPSHIRE ESTIMATED
	2004	2004/05 ⁽⁶⁾	2004/05 ⁽⁶⁾	2003/04	2002/03	2001/02	2000/01	2005/06	2006/07 based on Q1
								No. of fires	
1 Norfolk	361,968	353	9.8	11.9	12.6	12.8	13.5		
2 Essex	695,253	742	10.7	11.3	12.9	13.6	15.7		
3 Suffolk	292,235	339	11.6	14.0	11.8	14.2	16.0		
4 Warwickshire	219,712	255	11.6	12.8	13.7	14.4	13.8	WARWICKSHIRE 11.7	
5 Kent	676,764	843	12.5	12.8	14.0	14.9	15.5	HEREFORD & WORCESTER 12.3	
6 Hereford & Worcester	306,936	389	12.7	14.8	15.8	18.1	18.1		
7 Leicestershire	380,641	492	12.9	13.1	13.9	14.0	12.7	STAFFORDSHIRE 12.7	
8 Dorset	317,286	415	13.1	13.4	16.0	14.0	15.2		
9 Lincolnshire	288,823	386	13.4	12.9	15.0	14.7	15.9		
10 North Yorkshire	328,043	447	13.6	14.9	13.6	14.3	18.9		
11 Staffordshire	445,668	620	13.9	14.9	14.5	15.5	17.0		
12 Hampshire	679,876	954	14.0	15.4	17.0	18.7	19.1	SHROPSHIRE 14.0	
UPPER QUARTILE									
13 Cornwall	228,661	322	14.1	15.2	16.5	16.0	19.7		
14 Cambridgeshire	299,835	430	14.3	14.7	14.8	14.6	14.8		
15 Somerset	219,037	315	14.4	16.2	17.9	18.1	19.3		
16 Oxfordshire	242,070	349	14.4	12.8	18.2	17.2	18.7		
17 Avon	420,968	607	14.4	16.8	15.8	18.5	18.2		
18 Derbyshire	419,248	611	14.6	13.9	14.1	15.7	14.9		
19 Isle of Wight	62,272	91	14.6	15.9	20.5	22.8	26.0		
20 Shropshire	186,757	273	14.6	14.9	15.3	17.9	16.0		14.6
21 West Sussex	333,053	492	14.8	16.8	15.0	16.6	16.3		
22 Northamptonshire	271,392	416	15.3	17.5	16.5	20.0	19.7		
23 Surrey	437,440	675	15.4	14.6	13.8	14.3	13.2		
24 Buckinghamshire	280,201	437	15.6	16.4	15.2	21.2	19.6		
25 Humberside	385,284	607	15.8	18.7	17.6	20.8	19.7		
26 Cheshire	425,017	675	15.9	17.4	17.7	20.6	19.7		
27 Nottinghamshire	438,891	705	16.1	16.1	18.0	18.0	18.5		
28 Hertfordshire	432,293	702	16.2	16.3	14.6	17.0	19.1		
29 Devon	481,715	787	16.3	17.6	19.7	22.0	24.1		
30 Northumberland	138,001	226	16.4	16.5	18.6	17.1	19.6		
31 Wiltshire	259,213	437	16.9	14.5	15.3	16.3	15.7		
32 Gloucestershire	244,786	427	17.4	16.3	18.4	17.6	17.2		
33 Bedfordshire & Luton	231,239	405	17.5	15.5	18.1	18.1	17.6		
34 South Yorkshire	543,649	954	17.5	18.6	19.3	19.0	19.4		
35 County Durham & Darlington	260,642	457	17.5	18.4	19.0	19.7	20.9		
36 Royal Berkshire	321,369	569	17.7	17.6	17.9	19.3	19.6		
37 West Yorkshire	875,947	1,583	18.1	18.2	19.5	21.0	22.2		
38 Cumbria	225,280	438	19.4	20.8	21.1	20.8	20.8		
39 Cleveland	234,773	467	19.9	22.3	22.0	23.8	28.2		
40 London	3,082,504	6,259	20.3	22.0	21.3	22.3	23.5		
41 East Sussex	340,300	733	21.5	23.3	22.0	23.2	26.1		
42 West Midlands	1,052,738	2,466	23.4	25.2	26.1	28.2	29.7	WEST MIDLANDS 22.5	
43 Merseyside	593,714	1,465	24.7	27.2	25.2	30.1	31.8		
44 Lancashire	610,193	1,579	25.9	26.5	25.3	27.4	29.3		
45 Greater Manchester	1,084,040	3,525	32.5	32.7	34.6	32.7	33.0		
46 Tyne & Wear	471,762	1,571	33.3	33.4	32.7	35.4	35.3		

⁽¹⁾ As returned on form FDR1.

⁽²⁾ Includes caravans, houseboats and other non-building structures used as permanent dwellings.

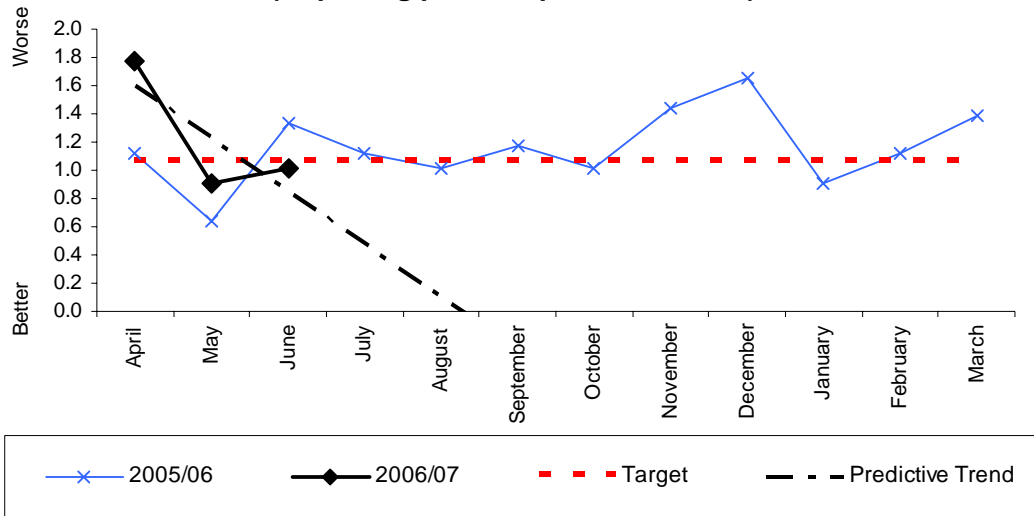
⁽³⁾ Source: CIPFA statistics (2005 data):

Number of domestic properties are taken from the CTB1 form for England.

⁽⁶⁾ Provisional 2005 data.

Source: DCLG Fire Statistics.

**The number of accidental fires in dwellings per 10,000 dwellings
(Reporting period April 05 - June 06)**



Monthly Stats (per 10,000 dwellings)

	Apr	May	June	July	Aug	Sept	Oct	Nov	Dec	Jan	Feb	Mar	YTD
2006	1.77	0.91	1.02										3.69
2005	1.12	0.64	1.34	1.12	1.02	1.18	1.02	1.45	1.66	0.91	1.12	1.39	13.98
2004	1.0	1.2	1.3	1.1	1.2	1.2	1.1	1.0	1.4	1.0	0.6	1.1	13.2

Monthly Stats (actual incidents)

	Apr	May	June	July	Aug	Sept	Oct	Nov	Dec	Jan	Feb	Mar	YTD
2006	33	17	19										69
2005	21	12	25	21	19	22	19	27	31	17	21	26	261
2004	18	23	24	21	22	22	21	18	26	19	11	20	245

Analysis

Yearly target	Will Authority achieve target? (Estimate using predictive trend)	Have current yearly results (including predictive trend) improved since last year?
12.8	X	X

Commentary

Incident numbers are dropping from a particularly bad start to the year. Please see Appendix F – Local Indicator Report for fires classed as Out On Arrival.

BV 143(i) - deaths arising from accidental fires⁽¹⁾ in dwellings⁽²⁾ per 100,000 population⁽³⁾

	Population mid 2004 (thousands)	No. of deaths 2004/05 ⁽⁴⁾	Deaths per 100,000 pop.				REGIONAL ESTIMATED SUBMISSION 2005/06	REGIONAL ESTIMATED 2006/07
			2004/05 ⁽⁴⁾	2003/04	2002/03	2001/02	2000/01	2006/07
1= Buckinghamshire	695.3	0	0.00	0.72	0.29	0.72	0.44	
1= Gloucestershire	572.8	0	0.00	0.88	0.00	0.35	0.35	
1= Northumberland	310.8	0	0.00	0.97	0.00	0.65	1.63	HEREFORD & WORCESTER 0.0
1= Royal Berkshire	805.8	0	0.00	0.50	0.12	0.37	0.87	
1= Wiltshire	626.8	0	0.00	0.00	0.97	0.49	0.00	
6 Devon	1,101.6	1	0.09	0.46	0.18	0.46	0.19	
7 Suffolk	683.7	1	0.15	0.59	0.60	0.60	0.89	
8 Oxfordshire	619.8	1	0.16	0.49	0.82	0.82	0.33	
9 County Durham & Darlington	595.4	1	0.17	0.84	1.18	0.51	0.34	
10 Somerset	512.5	1	0.20	0.79	0.40	0.80	0.20	STAFFORDSHIRE 0.19
11 North Yorkshire	764.9	2	0.26	0.66	0.79	0.27	0.40	0.22
12 Cambridgeshire	737.9	2	0.27	0.00	0.00	0.14	0.28	
UPPER QUARTILE								
13 Hereford & Worcester	729.8	2	0.27	0.41	0.28	0.42	0.56	
14 Hertfordshire	1,041.3	3	0.29	0.00	0.29	0.58	0.87	
15 Cheshire	992.6	3	0.30	0.30	0.71	0.30	0.81	
16 Kent	1,610.3	5	0.31	0.38	0.44	0.57	0.44	
17 London	7,429.2	24	0.32	0.84	0.73	0.76	0.69	
18 Bedfordshire & Luton	576.2	2	0.35	0.52	0.88	0.70	0.35	
19 Warwickshire	525.5	2	0.38	0.39	0.00	0.59	0.60	WARWICKSHIRE 0.38
20 Hampshire	1,663.1	7	0.42	0.42	0.24	0.18	0.37	
21 Dorset	700.4	3	0.43	0.14	0.29	0.72	0.29	WEST MIDLANDS 0.43
22 Lincolnshire	673.5	3	0.45	0.75	0.46	0.77	0.31	
23 Shropshire	449.0	2	0.45	0.22	0.22	0.68	1.37	0.45 - excluding NP stats
24 Tyne & Wear	1,085.6	5	0.46	0.46	0.55	0.55	0.18	
25 West Midlands	2,579.2	12	0.47	0.62	0.85	0.86	0.66	
26 Surrey	1,067.2	5	0.47	0.28	0.75	0.00	0.38	
27 Staffordshire	1,050.6	5	0.48	0.29	0.19	0.48	0.29	
28 Nottinghamshire	1,034.7	5	0.48	0.19	0.49	0.69	0.30	
29 Avon	1,006.6	5	0.50	0.50	0.70	0.40	0.20	
30 Derbyshire	979.2	5	0.51	0.41	0.72	0.62	0.52	
31 East Sussex	748.6	4	0.53	0.40	0.54	0.54	0.27	
32 Cumbria	494.8	3	0.61	0.41	0.41	0.62	1.03	
33 Norfolk	816.5	5	0.61	0.62	0.12	0.75	0.38	
34 Northamptonshire	646.7	4	0.62	0.31	0.00	0.32	0.32	
35 Essex	1,635.6	11	0.67	0.25	0.37	0.37	0.37	
36 Humberside	887.5	6	0.68	1.02	0.57	0.69	0.46	
37 Greater Manchester	2,539.0	18	0.71	0.79	0.75	1.15	0.72	
38 West Yorkshire	2,108.0	15	0.71	0.86	0.81	0.48	0.72	
39 Isle of Wight	138.4	1	0.72	0.00	0.00	0.00	1.52	
40 Cleveland	553.3	4	0.72	0.90	0.36	0.72	0.36	
41 Leicestershire	945.5	7	0.74	0.43	0.21	0.86	0.43	
42 Lancashire	1,434.9	11	0.77	0.98	1.41	0.85	1.06	
43 Cornwall	515.3	4	0.78	0.39	0.59	0.60	0.81	
44 South Yorkshire	1,278.4	10	0.78	0.71	0.47	1.42	0.79	
45 West Sussex	761.9	6	0.79	0.66	0.66	0.26	0.00	
46 Merseyside	1,365.8	12	0.88	0.51	0.59	1.02	1.38	0.89 - including NP stats

⁽¹⁾ As returned on form FDR1.

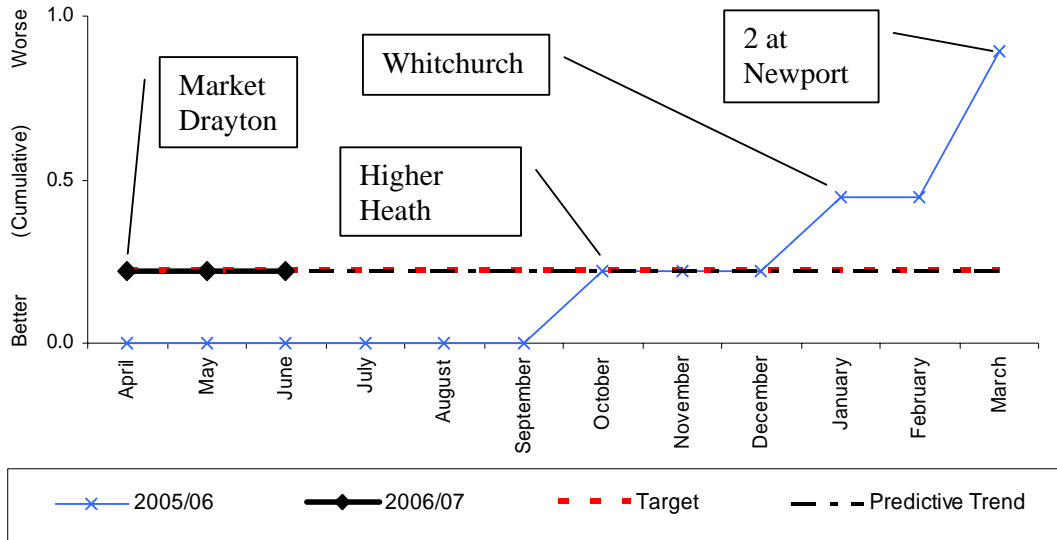
⁽²⁾ Includes caravans, houseboats and other non-building structures used as permanent dwellings.

⁽³⁾ Source: ONS 2004 mid-year estimates.

⁽⁴⁾ Provisional 2005 data.

Source: DCLG Fire Statistics.

**Number of deaths per 100,000 population arising from accidental dwelling fires per 100,000 population
(Reporting period April 05 - June 06)**



Monthly Stats (per 100,000 population)

	Apr	May	June	July	Aug	Sept	Oct	Nov	Dec	Jan	Feb	Mar	YTD
2006	0.22	0	0										0.22
2005	0	0	0	0	0	0	0.22	0	0	0.22	0	0.45	0.89
2004	0	0	0	0	0.22	0	0	0	0	0	0.22	0	0.45

Monthly Stats (people)

	Apr	May	June	July	Aug	Sept	Oct	Nov	Dec	Jan	Feb	Mar	YTD
2006	1	0	0										1
2005	0	0	0	0	0	0	1	0	0	1	0	2	4
2004	0	0	0	0	1	0	0	0	0	0	1	0	2

Analysis

Yearly target	Will Authority achieve target? (Estimate using predictive trend)	Have current yearly results (including predictive trend) improved since last year?
0.22	√	√

Commentary

BV 143(ii) - injuries (excluding precautionary checks) arising from accidental fires ⁽¹⁾ in dwellings ⁽²⁾ per 100,000 population ⁽³⁾

	Population mid 2004 (thousands)	No. of injuries 2004/05 ⁽ⁿ⁾	Injuries per 100,000 pop.				REGIONAL ESTIMATED SUBMISSION 2005/06	SHROPSHIRE ESTIMATED 2006/07 based on Q1
			2004/05 ^(p)	2003/04	2002/03 ⁽⁴⁾	2001/02		
1 Kent ⁽⁷⁾	1,610.3	33	2.0	2.2	3.8	3.2	10.9	
2 Shropshire	449.0	16	3.6	3.8	3.6	8.8	7.3	STAFFORDSHIRE 2.8
3 Isle of Wight	138.4	5	3.6	5.9	7.4	8.3	16.0	3.6 - excluding NP stats
4 Warwickshire	525.5	21	4.0	6.9	5.5	8.7	5.0	HEREFORD & WORCESTER 4.0
5 Dorset	700.4	29	4.1	5.1	9.2	8.7	9.8	4.01 - including NP stats
6 Bedfordshire & Luton	576.2	26	4.5	3.1	3.5	6.5	5.0	
7 Gloucestershire	572.8	26	4.5	6.0	9.2	8.1	7.8	
8 Staffordshire	1,050.6	48	4.6	5.1	7.2	13.5	12.2	
9 Cleveland	553.3	26	4.7	4.7	3.4	12.8	8.5	
10 County Durham & Darlington ⁽⁵⁾	595.4	28	4.7	11.5	10.7	10.6	6.4	
11 Avon	1,006.6	48	4.8	7.5	6.3	9.9	11.0	
12 Hereford & Worcester	729.8	37	5.1	5.6	5.1	9.5	5.6	
UPPER QUARTILE								
13 Somerset	512.5	29	5.7	6.1	5.2	7.6	4.3	
14 Suffolk	683.7	39	5.7	9.9	8.5	10.0	6.5	
15 Derbyshire	979.2	56	5.7	7.9	5.5	6.2	5.8	WARWICKSHIRE 5.3
16 Royal Berkshire	805.8	47	5.8	8.0	7.6	8.5	6.7	
17 Wiltshire	626.8	38	6.1	5.5	7.5	10.1	9.4	
18 Humberside ⁽⁶⁾	887.5	57	6.4	14.5	15.9	22.7	14.2	
19 Northumberland	310.8	20	6.4	10.0	11.4	7.5	9.4	
20 Buckinghamshire	695.3	46	6.6	8.6	6.9	8.8	8.3	
21 Hertfordshire	1,041.3	71	6.8	7.7	9.2	9.4	8.8	WEST MIDLANDS 6.8
22 Norfolk	816.5	56	6.9	9.1	11.3	10.5	10.3	
23 Oxfordshire	619.8	43	6.9	4.1	7.7	8.2	13.5	
24 Leicestershire	945.5	68	7.2	7.1	5.6	6.4	5.5	
25 West Sussex	761.9	57	7.5	7.2	10.8	10.3	10.8	
26 West Midlands	2,579.2	196	7.6	7.8	11.0	9.2	9.2	
27 Essex	1,635.6	128	7.8	8.5	9.4	8.2	10.3	
28 East Sussex	748.6	59	7.9	9.5	11.8	12.0	11.6	
29 Cornwall	515.3	42	8.2	7.6	11.3	10.2	11.9	
30 Cambridgeshire	737.9	63	8.5	13.4	10.9	9.7	9.0	
31 Surrey	1,067.2	93	8.7	9.9	8.3	8.0	7.9	
32 Northamptonshire	646.7	58	9.0	4.2	7.5	6.8	8.8	
33 Hampshire	1,663.1	152	9.1	10.5	10.2	8.1	7.1	
34 North Yorkshire	764.9	71	9.3	9.2	8.1	10.1	8.7	
35 Cheshire	992.6	96	9.7	8.2	10.7	10.5	12.3	
36 Devon	1,101.6	109	9.9	12.0	13.6	11.7	17.9	
37 Nottinghamshire	1,034.7	105	10.1	12.2	15.4	11.7	11.0	
38 Cumbria	494.8	54	10.9	13.9	9.4	9.0	13.1	
39 London	7,429.2	815	11.0	11.6	12.9	12.2	11.6	
40 South Yorkshire	1,278.4	144	11.3	11.4	9.8	13.0	11.5	
41 Lincolnshire	673.5	91	13.5	14.3	10.1	10.8	7.8	
42 West Yorkshire	2,108.0	292	13.9	12.6	15.5	16.9	17.6	
43 Tyne & Wear	1,085.6	159	14.6	14.8	13.7	19.6	18.7	
44 Merseyside	1,365.8	210	15.4	13.9	16.6	24.9	28.7	
45 Lancashire	1,434.9	264	18.4	16.0	15.1	20.0	19.2	
46 Greater Manchester	2,539.0	489	19.3	21.8	26.1	25.1	22.5	

⁽¹⁾ As returned on form FDR1.

⁽²⁾ Includes caravans, houseboats and other non-building structures used as permanent dwellings.

⁽³⁾ Source: ONS 2004 mid-year estimates.

⁽⁴⁾ Some fire and rescue services have been reviewing the way in which non-fatal casualties are recorded. This could account for some of the changes in the injury rates in 2002/03.

⁽⁵⁾ In 2004/05 Durham improved their recording procedures for injuries. Consequently, a larger proportion have been recorded as 'precautionary checks' (and therefore been excluded from BVPI calculations) than in previous years. This accounts for some of the reduction in 2004/05.

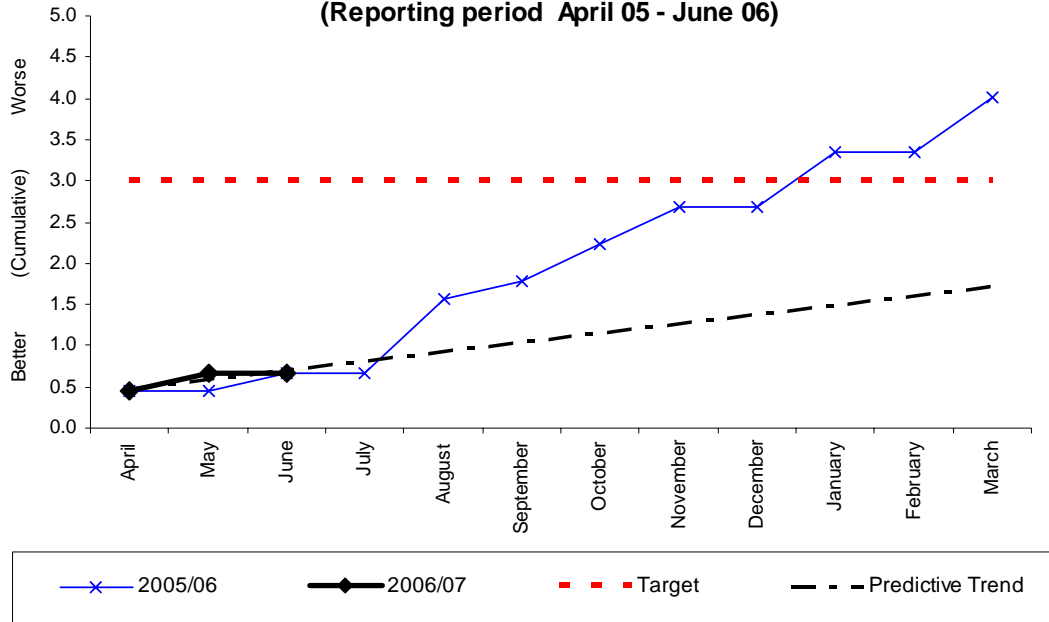
⁽⁶⁾ In 2004/05 Humberside improved their recording procedures for injuries. Consequently, a larger proportion have been recorded as 'precautionary checks' (and therefore been excluded from BVPI calculations) than in previous years. This accounts for some of the reduction in 2004/05.

⁽⁷⁾ From 2001/02 a larger proportion of injuries in Kent have been recorded as 'precautionary checks' (and consequently been excluded from BVPI calculations) than in previous years. This accounts in part for the change in the BVPI between 2000/01 and 2001/02.

⁽ⁿ⁾ Provisional 2005 data.

Source: DCLG Fire Statistics.

**The number of injuries (excluding precautionary checks) arising from accidental fires in dwellings per 100,000 population
(Reporting period April 05 - June 06)**



Monthly Stats (per 100,000 population)

	Apr	May	June	July	Aug	Sept	Oct	Nov	Dec	Jan	Feb	Mar	YTD
2006	0.45	0.22	0										0.67
2005	0.45	0	0.22	0	0.89	0.22	0.45	0.45	0	0.67	0	0.67	4.01
2004	0.67	0.22	0	0	0	0.22	0	0.22	0.22	0.22	0	0.22	2.02

Monthly Stats (actual incidents)

	Apr	May	June	July	Aug	Sept	Oct	Nov	Dec	Jan	Feb	Mar	YTD
2006	2	1	0										3
2005	2	0	1	0	4	1	2	2	0	3	0	3	18
2004	3	1	0	0	0	1	0	1	1	1	0	1	9

Analysis

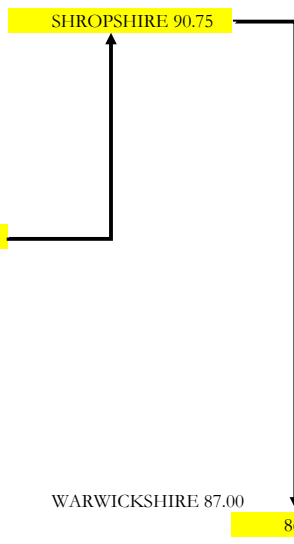
Yearly target	Will Authority achieve target? (Estimate using predictive trend)	Have current yearly results (including predictive trend) improved since last year?
3	√	√

Commentary

2006-07 Newport 2; Shrewsbury 1
2005-06 Clun 1; Newport 3; Shifnal 2; Shrewsbury 4; Telford Central 3; Wellington 3; Whitchurch 2
2004-05 Ludlow 1; Oswestry 1; Shrewsbury 3; Telford Central 4; Wellington 1

BV 144 - percentage⁽¹⁾ of accidental fires in dwellings⁽²⁾ confined to room of origin⁽³⁾

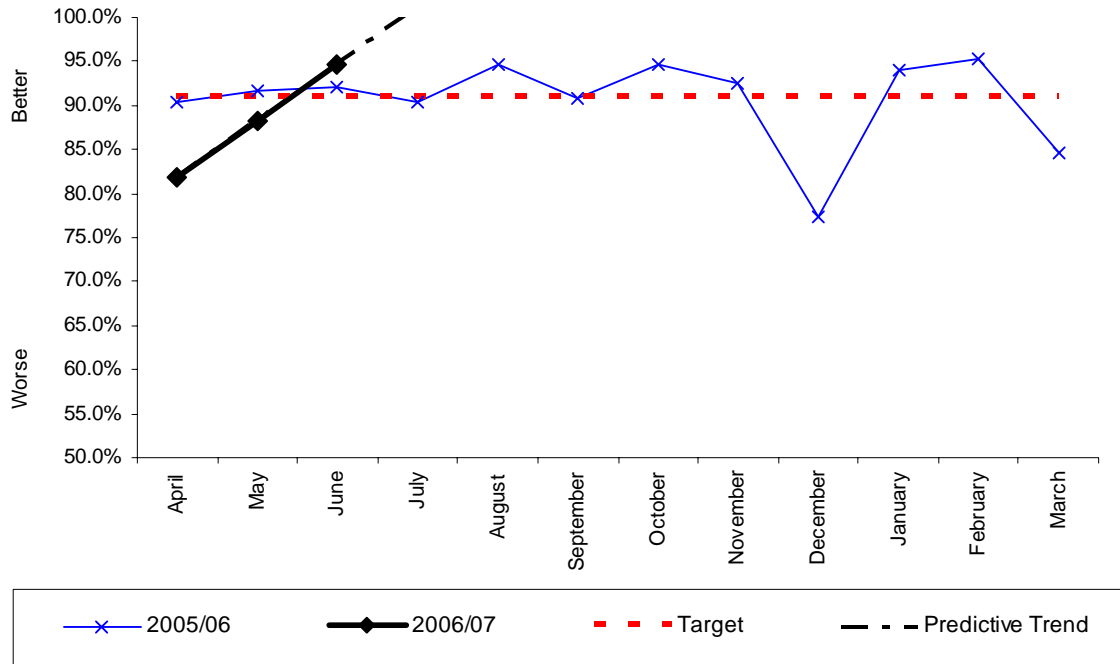
	No. confined to	Total accidental	Percentage confined	REGIONAL	SHROPSHIRE
	room of origin	dwelling fires	to room of origin	ESTIMATED	ESTIMATED
	2004/05 ^(p)	2004/05 ^(p)	2004/05 ^(p)	SUBMISSION	2006/07 based on
				2005/06	Q1
1 Greater Manchester	3,377	3,525	95.8		
2 Tyne & Wear	1,496	1,571	95.2		
3 Derbyshire	574	611	93.9		
4 Merseyside	1,372	1,465	93.7		
5 Cambridgeshire	402	430	93.5		
6 Wiltshire	408	437	93.4		
7 Suffolk	316	339	93.2		
8 East Sussex	681	733	92.9		
9 Cleveland	433	467	92.7	STAFFORDSHIRE 92.6	
10 Hertfordshire	648	702	92.3	HEREFORD & WORCESTER 92.3	
11 Dorset	382	415	92.0		
12 Buckinghamshire	402	437	92.0		
UPPER QUARTILE					
13 London	5,751	6,259	91.9		
14 County Durham & Darlington	420	457	91.9		
15 Royal Berkshire	521	569	91.6		
16 Humberside	555	607	91.4		
17 Bedfordshire & Luton	370	405	91.4		
18 Cheshire	616	675	91.3		
19 Nottinghamshire	641	705	90.9		
20 South Yorkshire	867	954	90.9		
21 Gloucestershire	388	427	90.9		
22 Northamptonshire	378	416	90.9		
23 Surrey	611	675	90.5		
24 Lancashire	1,428	1,579	90.4		
25 Kent	762	843	90.4		
26 Hampshire	862	954	90.4		
27 Staffordshire	560	620	90.3		
28 West Yorkshire	1,429	1,583	90.3		
29 Northumberland	204	226	90.3		
30 Devon	710	787	90.2		
31 Avon	547	607	90.1		
32 Shropshire	246	273	90.1		
33 Leicestershire	443	492	90.0		
34 West Midlands	2,217	2,466	89.9		
35 West Sussex	442	492	89.8		
36 Cornwall	288	322	89.4		
37 Oxfordshire	312	349	89.4		
38 North Yorkshire	399	447	89.3		
39 Hereford & Worcester	346	389	88.9		
40 Somerset	277	315	87.9		
41 Cumbria	385	438	87.9		
42 Warwickshire	223	255	87.5		
43 Lincolnshire	336	386	87.0	WARWICKSHIRE 87.00	
44 Essex	641	742	86.4		
45 Isle of Wight	78	91	85.7		
46 Norfolk	298	353	84.4		
					WEST MIDLANDS 85.3



(1) This calculation is based on the data as returned on form FDR1.
 (2) Includes caravans, houseboats and other non-buildings used as a permanent dwelling.
 (3) Fire and heat spread confined to room of origin.
 (p) Provisional 2005 data.

Source: DCLG Fire Statistics.

**The percentage of accidental dwelling fires confined to room of origin
(Reporting period April 05 - June 06)**



Monthly Stats (percentage)

	Apr	May	June	July	Aug	Sept	Oct	Nov	Dec	Jan	Feb	Mar
2006	81.82%	88.24%	94.74%									
2005	90.48%	91.67%	92.00%	90.48%	94.74%	90.91%	94.74%	92.59%	77.42%	94.12%	95.24%	84.62%
2004	No previous data as BVPI was split into C and D risk areas											

Monthly Stats (actual incidents)

	Apr	May	June	July	Aug	Sept	Oct	Nov	Dec	Jan	Feb	Mar	YTD	%
2006	27/33	15/17	18/19										60/69	86.96%
2005	19/21	11/12	23/25	19/21	18/19	20/22	18/19	25/27	24/31	16/17	20/21	22/26	235/261	90.04%
2004	No previous data as BVPI was split into C and D risk areas													

Analysis

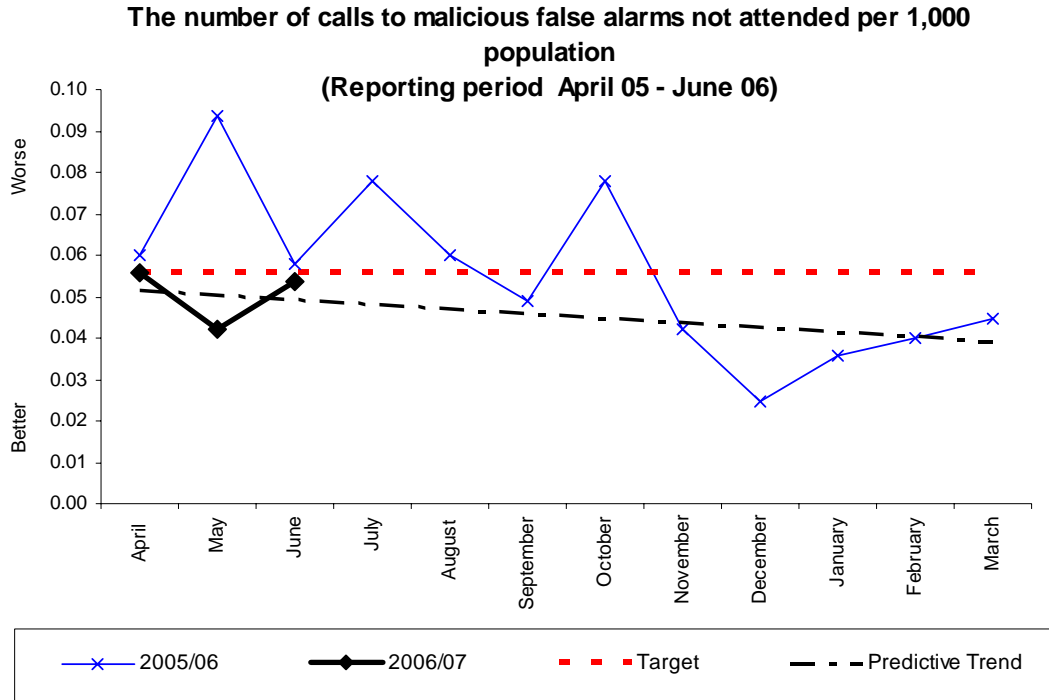
Yearly target	Will Authority achieve target? (Estimate using predictive trend)	Have current yearly results (including predictive trend) improved since last year?
91%	X	X

Commentary

BV 146i - number of calls to malicious false alarms NOT ATTENDED per 1,000 population

	Calls per 1,000 pop.			REGIONAL	SHROPSHIRE
	2004/05 ^(p)	2003/04	2002/03	ESTIMATED SUBMISSION 2005/06	ESTIMATED 2006/07 based on Q1
1 Hereford & Worcester	0.23	n/a	n/a	HEREFORD & WORCESTER 0.32	
2 Shropshire	0.66	0.82	0.93	WARWICKSHIRE 0.34	
3 West Midlands	1.32	1.27	1.29	STAFFORDSHIRE 0.54	
4 Staffordshire	n/a	n/a	n/a	SHROPSHIRE 0.66	0.60
5 Warwickshire	n/a	n/a	n/a	WEST MIDLANDS 1.39	

146(i)



Monthly Stats (per 1,000 population)

	Apr	May	June	July	Aug	Sept	Oct	Nov	Dec	Jan	Feb	Mar	YTD
2006	0.06	0.04	0.05										0.15
2005	0.06	0.09	0.06	0.08	0.06	0.05	0.08	0.04	0.02	0.04	0.04	0.04	0.66
2004	No previous data since this BVPI has been divided from 146 into 146(i) and 146(ii)												

Monthly Stats (actual incidents)

	Apr	May	June	July	Aug	Sept	Oct	Nov	Dec	Jan	Feb	Mar	YTD
2006	25	19	24										68
2005	27	42	26	35	27	22	35	19	11	16	18	20	298
2004	No previous data since this BVPI has been divided from 146 into 146(i) and 146(ii)												

Analysis

Yearly target	Will Authority achieve target? (Estimate using predictive trend)	Have current yearly results (including predictive trend) improved since last year?
0.67	√	√

Commentary

BV 146ii - number of calls to malicious false alarms ⁽¹⁾ ATTENDED per 1,000 population ⁽²⁾

	Population		Calls per 1,000 pop.					REGIONAL ESTIMATED SUBMISSION 2005/06	SHROPSHIRE ESTIMATED 2006/07 based on Q1
	mid 2004 (thousands)	No. of calls 2004/05 ⁽³⁾	2004/05 ⁽⁴⁾	2003/04	2002/03	2001/02	2000/01		
1 Wiltshire	626.8	107	0.2	0.3	0.3	0.3	0.8		
2 Gloucestershire	572.8	111	0.2	0.3	0.3	0.3	0.3		
3 Cornwall	515.3	106	0.2	0.3	0.4	0.5	0.6	WARWICKSHIRE 0.21	
4 Oxfordshire ⁽⁵⁾	619.8	136	0.2	0.3	0.5	0.7	0.8		
5 Hertfordshire	1,041.3	242	0.2	0.4	0.6	0.7	0.6		
6 Somerset	512.5	120	0.2	0.5	0.5	0.5	0.4		
7 Norfolk	816.5	222	0.3	0.3	0.4	0.4	0.4		
8 Cumbria	494.8	171	0.3	0.6	1.3	1.1	1.2	HEREFORD & WORCESTER 0.31	
9 Surrey	1,067.2	377	0.4	0.4	0.4	0.5	0.5		
10 Hereford & Worcester	729.8	264	0.4	0.5	0.5	0.7	0.6		
11 Devon	1,101.6	408	0.4	0.6	0.7	0.7	0.8		
12 Hampshire	1,663.1	624	0.4	0.5	0.5	0.5	0.4		
UPPER QUARTILE									
13 Warwickshire	525.5	202	0.4	0.3	0.7	0.4	0.6		
14 Bedfordshire & Luton	576.2	230	0.4	0.6	0.6	0.8	0.7		
15 Kent	1,610.3	698	0.4	0.7	0.8	0.9	0.9	STAFFORDSHIRE 0.	
16 Suffolk	683.7	304	0.4	0.5	0.6	0.7	0.5		
17 Shropshire	449.0	200	0.4	0.4	0.7	0.7	0.6	→ SHROPSHIRE 0.40	
18 Cambridgeshire	737.9	342	0.5	0.5	0.5	0.6	0.7		
19 Staffordshire	1,050.6	488	0.5	0.6	0.8	0.8	0.8		
20 Buckinghamshire	695.3	323	0.5	0.5	0.5	0.7	0.7		
21 West Sussex	761.9	362	0.5	0.5	0.5	0.5	0.6		
22 Dorset	700.4	338	0.5	0.5	0.6	0.7	0.7		
23 Cheshire	992.6	485	0.5	0.6	0.6	0.6	0.5		
24 East Sussex	748.6	372	0.5	0.7	0.6	0.8	0.7		
25 North Yorkshire	764.9	390	0.5	0.4	0.5	0.5	0.5		
26 Leicestershire	945.5	494	0.5	0.6	0.7	0.8	0.7		
27 Northumberland	310.8	163	0.5	0.6	0.8	0.8	0.8		
28 Northamptonshire	646.7	344	0.5	0.6	0.7	0.6	0.8		
29 Isle of Wight	138.4	76	0.5	0.4	0.6	0.7	0.6		
30 Derbyshire	979.2	550	0.6	0.6	0.7	0.8	0.9		
31 County Durham & Darlington	595.4	354	0.6	1.0	1.6	1.8	1.8		
32 Royal Berkshire	805.8	488	0.6	0.8	0.9	1.2	1.1		
33 Cleveland	553.3	353	0.6	0.9	2.5	3.1	4.5		
34 Humberside	887.5	613	0.7	0.8	1.0	1.1	1.1		
35 Nottinghamshire	1,034.7	719	0.7	0.7	0.8	0.9	0.8		
36 South Yorkshire	1,278.4	934	0.7	1.6	2.1	2.3	2.2		
37 Tyne & Wear	1,085.6	795	0.7	0.9	1.0	1.2	1.2		
38 Lincolnshire	673.5	517	0.8	0.8	0.8	0.6	0.5		
39 Lancashire	1,434.9	1,133	0.8	1.0	1.0	1.1	1.0		
40 Essex	1,635.6	1,399	0.9	1.0	1.3	1.2	1.1		
41 West Yorkshire	2,108.0	1,961	0.9	1.1	1.2	1.4	1.3		
42 London	7,429.2	7,556	1.0	1.3	1.4	1.7	1.6		
43 Merseyside	1,365.8	1,412	1.0	1.7	1.7	1.7	2.0		
44 Avon	1,006.6	1,085	1.1	1.4	1.5	1.5	1.4	WEST MIDLANDS 1.12	
45 West Midlands	2,579.2	3,215	1.2	1.6	1.7	2.0	2.0		
46 Greater Manchester	2,539.0	4,334	1.7	2.0	2.3	2.5	2.3		

⁽¹⁾ As recorded on form FDR3.

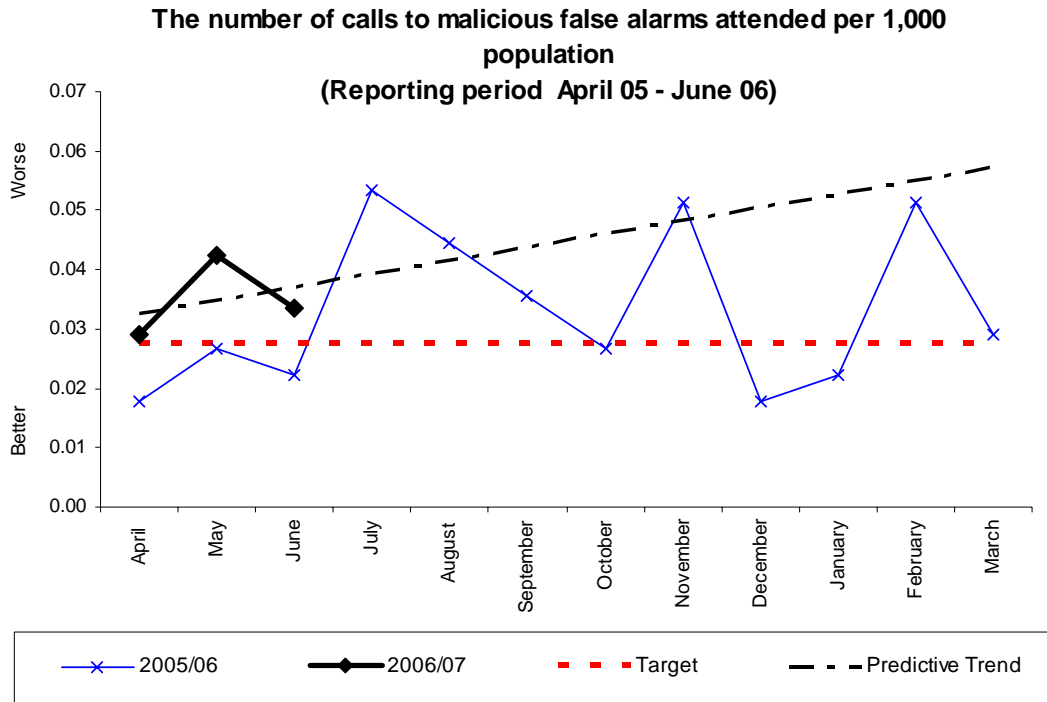
⁽²⁾ Source: ONS 2004 mid-year estimates.

⁽³⁾ Data for Oxfordshire for 2002/03 onwards are not directly comparable with previous years due to revised procedures in responding to an alarm.

⁽⁴⁾ Provisional 2005 data.

Source: DCLG Fire Statistics.

146(ii)



Monthly Stats (per 1,000 population)

	Apr	May	June	July	Aug	Sept	Oct	Nov	Dec	Jan	Feb	Mar	YTD
2006	0.03	0.04	0.03										0.10
2005	0.02	0.03	0.02	0.05	0.04	0.04	0.03	0.05	0.02	0.02	0.05	0.03	0.40
2004	No previous data since this BVPI has been divided from 146 into 146(i) and 146(ii)												

Monthly Stats (actual incidents)

	Apr	May	June	July	Aug	Sept	Oct	Nov	Dec	Jan	Feb	Mar	YTD
2006	13	19	15										
2005	8	12	10	24	20	16	12	23	8	10	23	13	179
2004	No previous data since this BVPI has been divided from 146 into 146(i) and 146(ii)												

Analysis

Yearly target	Will Authority achieve target? (Estimate using predictive trend)	Have current yearly results (including predictive trend) improved since last year?
0.33	X	X

Commentary

BV 149i - false alarms caused by automatic fire detection apparatus⁽¹⁾ per 1,000 non-domestic properties⁽²⁾

	Non-domestic No. of false properties alarms		False alarms per 1,000 non-domestic properties				REGIONAL ESTIMATED SUBMISSION 2005/06	SHROPSHIRE ESTIMATED 2006/07 based on Q1
	2004	2004/05 ⁽³⁾	2004/05 ⁽³⁾	2003/04	2002/03	2001/02		
1 Cornwall	25,264	1,079	42.7	57.4	52.6	53.4	52.1	
2 Dorset	24,951	1,244	49.9	48.8	52.7	47.5	48.6	
3 East Sussex	25,294	1,504	59.5	55.8	63.5	61.7	67.8	
4 Somerset	18,064	1,387	76.8	108.5	121.2	135.8	139.3	
5 Isle of Wight ⁽³⁾	5,860	454	77.5	48.4	42.5	46.6	59.1	
6 Lincolnshire	23,177	1,898	81.9	75.4	76.9	67.8	67.8	
7 Shropshire	15,155	1,259	83.1	90.8	102.3	108.1	103.5	WEST MIDLANDS 76.9
8 Oxfordshire ⁽⁴⁾	18,110	1,577	87.1	77.5	193.5	243.8	244.2	69.2
9 Cumbria	22,576	2,038	90.3	92.7	91.8	96.8	104.8	
10 Essex	49,872	4,719	94.6	102.4	101.0	105.8	103.6	STAFFORDSHIRE 97.0
11 Norfolk	29,986	3,086	102.9	111.3	114.5	114.4	100.7	HEREFORD & WORCESTER 100.8
12 Suffolk	24,230	2,731	112.7	119.2	119.3	119.7	112.0	
UPPER QUARTILE								
13 Bedfordshire & Luton	16,245	1,841	113.3	116.9	114.7	139.4	127.2	
14 Hereford & Worcester	24,405	2,807	115.0	114.3	104.7	93.8	68.0	
15 South Yorkshire	36,234	4,204	116.0	117.5	124.7	126.3	120.5	
16 Devon	40,745	4,863	119.4	129.7	129.5	124.7	123.7	
17 Humberside	28,382	3,403	119.9	121.5	121.3	121.2	111.4	
18 Kent	47,862	5,811	121.4	128.9	126.7	131.4	133.6	
19 Wiltshire	17,963	2,189	121.9	154.7	161.9	172.5	145.3	
20 North Yorkshire	30,459	3,726	122.3	113.9	113.5	113.3	107.1	
21 Derbyshire	30,050	3,784	125.9	132.3	138.9	144.2	149.6	
22 Cheshire	30,750	3,875	126.0	131.7	147.7	137.5	109.0	
23 Hertfordshire	28,699	3,648	127.1	150.3	132.6	135.8	148.3	
24 County Durham & Darlington	17,279	2,237	129.5	113.9	72.3	72.9	61.3	
25 Gloucestershire	19,894	2,601	130.7	110.8	109.4	106.6	95.6	
26 Northumberland	10,506	1,382	131.5	132.6	126.0	135.9	126.0	
27 Staffordshire	31,532	4,188	132.8	129.5	111.4	87.2	81.7	
28 Leicestershire	30,190	4,177	138.4	134.4	142.5	137.0	131.4	
29 Lancashire	50,618	7,104	140.3	136.4	133.9	135.5	137.0	
30 Cleveland	14,715	2,072	140.8	151.6	171.0	174.1	159.9	
31 Hampshire	46,833	6,663	142.3	143.8	150.8	146.9	142.3	
32 West Midlands	89,843	12,833	142.8	132.5	118.5	107.9	107.1	
33 Greater Manchester	90,136	12,926	143.4	138.1	141.4	142.5	147.9	
34 Avon	30,942	4,605	148.8	147.1	164.8	124.0	97.9	
35 Nottinghamshire	29,706	4,445	149.6	151.5	155.6	150.6	152.7	
36 Warwickshire	15,891	2,402	151.2	152.0	151.3	146.6	157.7	
37 Northamptonshire	18,777	2,864	152.5	145.5	149.1	142.9	136.9	
38 Buckinghamshire	19,526	3,119	159.7	136.8	119.9	125.4	124.4	WARWICKSHIRE 154.7
39 Merseyside	38,966	6,536	167.7	165.9	124.8	146.4	157.3	
40 West Yorkshire	74,688	13,245	177.3	176.3	170.6	166.7	144.9	
41 Tyne & Wear	30,868	5,680	184.0	200.7	201.9	196.1	203.9	
42 London	277,872	51,264	184.5	182.9	183.2	184.2	180.8	
43 Royal Berkshire	22,143	4,246	191.8	195.3	206.7	210.8	221.3	
44 Surrey ⁽⁵⁾	30,420	5,931	195.0	194.1	188.7	194.9	67.0	
45 West Sussex	23,263	4,598	197.7	202.3	219.0	216.0	228.9	
46 Cambridgeshire	21,727	4,404	202.7	199.8	229.9	240.6	226.5	

⁽¹⁾ As recorded on form FDR3. Figures may include some false alarms in domestic properties.

⁽²⁾ Source: CIPFA statistics (2005 data).

Numbers of non-domestic properties are taken from the National Non-Domestic Rates Provisional Contributions Return at December 2004.

⁽³⁾ Data for the Isle of Wight for 2004/04 are not directly comparable with previous years due to changes in the recording of some types of false alarm incidents.

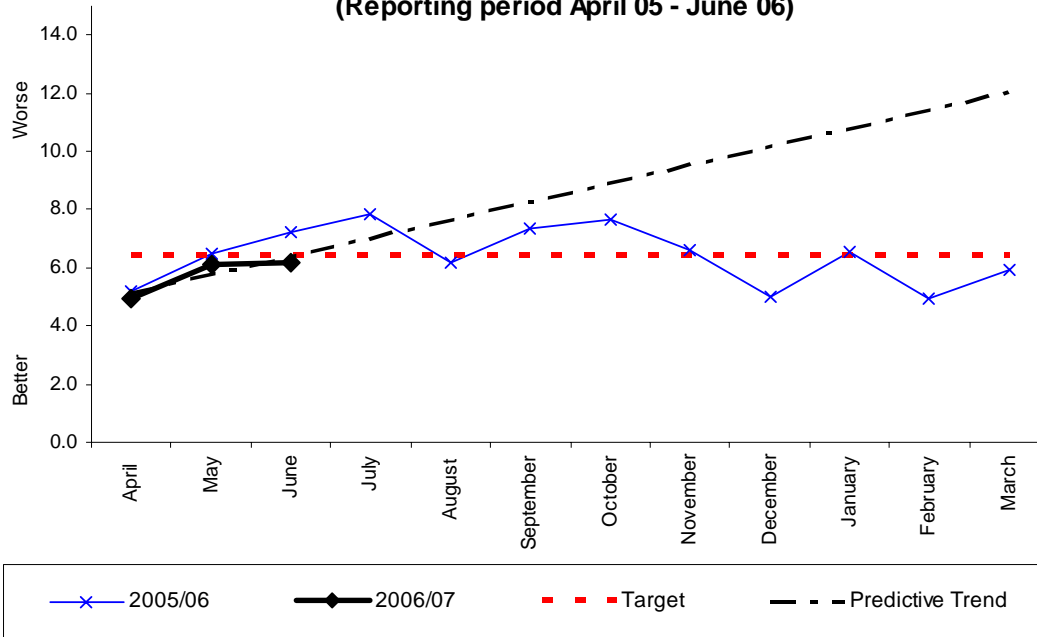
⁽⁴⁾ Data for Oxfordshire for 2002/03 onwards are not directly comparable with previous years due to revised procedures in responding to an alarm.

⁽⁵⁾ Data for Surrey for 2001/02 onwards are not directly comparable with previous years due to changes in the recording of false alarm incidents. These changes for Surrey do not affect BVPI146.

⁽⁶⁾ Provisional 2005 data.

Source: DCLG Fire Statistics.

The number of false alarms caused by automatic fire detection apparatus per 1,000 non-domestic properties (Reporting period April 05 - June 06)



Monthly Stats (per 1,000 non-domestic properties)

	Apr	May	June	July	Aug	Sept	Oct	Nov	Dec	Jan	Feb	Mar	YTD
2006	4.95	6.14	6.20										17.29
2005	5.21	6.47	7.19	7.85	6.20	7.32	7.65	6.60	5.01	6.53	4.95	5.94	76.94
2004	5.2	5.9	6.0	8.4	9.8	8.5	7.9	7.6	5.6	5.8	6.4	6.1	83.2

Monthly Stats (actual incidents)

	Apr	May	June	July	Aug	Sept	Oct	Nov	Dec	Jan	Feb	Mar	YTD
2006	75	93	94										262
2005	79	98	109	119	94	111	116	100	76	99	75	90	1166
2004	79	89	91	127	148	128	119	115	85	88	97	92	1258

Analysis

Yearly target	Will Authority achieve target? (Estimate using predictive trend)	Have current yearly results (including predictive trend) improved since last year?
77	√	√

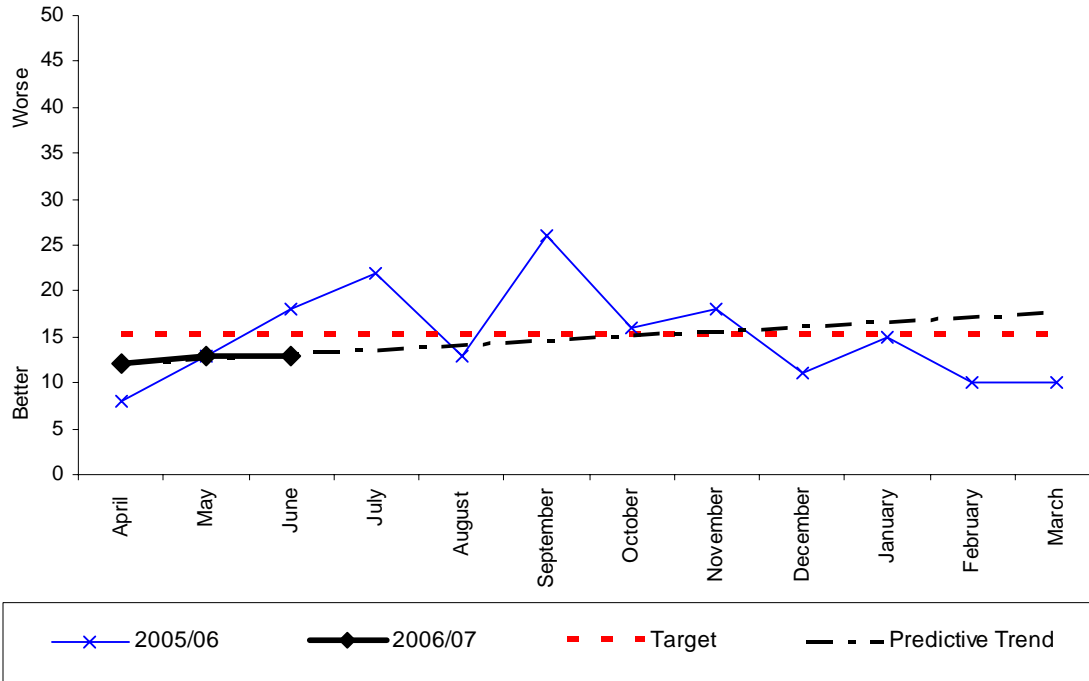
Commentary

Please note that domestic properties have been removed from the reporting of this BVPI for 2005/06 onwards. As such, previous years are not directly comparable.

BV 149ii - The number of those properties with more than one attendance to false alarms caused by automatic fire detection apparatus

	Number of those properties with more than 1 attendance 2004/05 ^(p)	REGIONAL ESTIMATED SUBMISSION 2005/06	SHROPSHIRE ESTIMATED 2006/07 based on Q1
1 Hereford & Worcester	320	SHROPSHIRE 180	156
2 Shropshire	n/a	HEREFORD & WORCESTER 376	
3 Staffordshire	n/a	WARWICKSHIRE 381	
4 Warwickshire	n/a	STAFFORDSHIRE 463	
5 West Midlands	n/a	WEST MIDLANDS 845	

**The number of those properties with more than 1 attendance
(Reporting period April 05 - June 06)**



Monthly Stats (per 1,000 non-domestic properties)

	Apr	May	June	July	Aug	Sept	Oct	Nov	Dec	Jan	Feb	Mar	YTD
2006	0.79	0.86	0.86										2.51
2005	0.53	0.86	1.19	1.45	0.86	1.72	1.06	1.19	0.73	0.99	0.66	0.66	11.88
2004	No previous data as this is a new BVPI												

Monthly Stats (actual incidents)

	Apr	May	June	July	Aug	Sept	Oct	Nov	Dec	Jan	Feb	Mar	YTD
2006	12	13	13										38
2005	8	13	18	22	13	26	16	18	11	15	10	10	180
2004	No previous data as this is a new BVPI												

Analysis

Yearly target	Will Authority achieve target? (Estimate using predictive trend)	Have current yearly results (including predictive trend) improved since last year?
No target set as no previous data	√	√

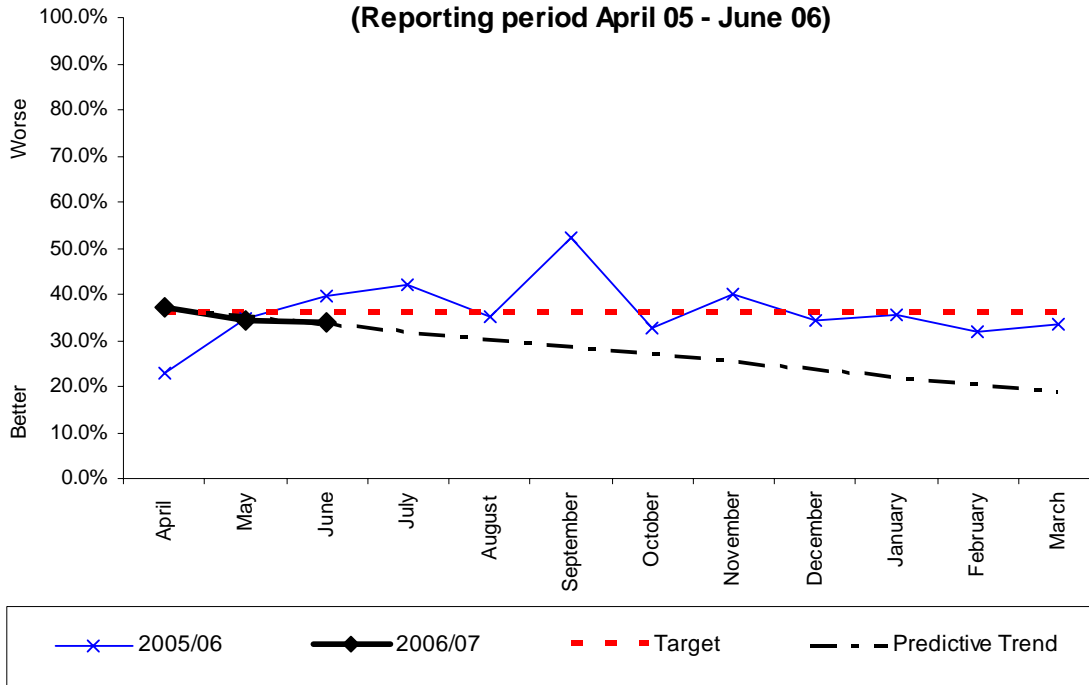
Commentary

BV 149iii - The percentage of calls which are to a property with more than one attendance to false alarms caused by automatic fire detection apparatus

	% of calls to properties with more than 1 attendance <u>2004/05^(P)</u>	REGIONAL ESTIMATED SUBMISSION 2005/06	SHROPSHIRE ESTIMATED 2006/07 based on Q1
1 Hereford & Worcester	74.3	SHROPSHIRE 36.8	35.9
2 Shropshire	n/a	WEST MIDLANDS 58.6	
3 Staffordshire	n/a	STAFFORDSHIRE 67.8	
4 Warwickshire	n/a	HEREFORD & WORCESTER 75.5	
5 West Midlands	n/a	WARWICKSHIRE 75.7	

The percentage of calls which are to a property with more than 1 attendance

(Reporting period April 05 - June 06)



Monthly Stats (percentage)

	Apr	May	June	July	Aug	Sept	Oct	Nov	Dec	Jan	Feb	Mar
2006	37.33%	34.41%	34.04%									
2005	22.78%	34.69%	39.45%	42.02%	35.11%	52.25%	32.76%	40.00%	34.21%	35.35%	32.00%	33.33%
2004	No previous data as this is a new BVPI											

Monthly Stats (actual incidents)

	Apr	May	June	July	Aug	Sept	Oct	Nov	Dec	Jan	Feb	Mar	YTD	%
2006	28/75	32/93	32/94										92/262	35.11%
2005	18/79	34/98	43/109	50/119	33/94	58/111	38/116	40/100	26/78	35/99	24/75	30/90	429/1166	36.79%
2004	No previous data as this is a new BVPI													

Analysis

Yearly target	Will Authority achieve target? (Estimate using predictive trend)	Have current yearly results (including predictive trend) improved since last year?
36%	√	√

Commentary

BV 150 - expenditure per head of population⁽¹⁾ on the provision of fire and rescue services

	ODPM		Net expenditure per head (£)				REGIONAL ESTIMATED SUBMISSION 2005/06	
	Population mid 2004 (thousands)	RO6 line 290 ⁽²⁾ (£1,000s)	2004/05 ⁽³⁾	2003/04 ⁽³⁾	2002/03 ⁽⁴⁾	2001/02 ⁽⁴⁾		2000/01 ⁽⁴⁾
1 Buckinghamshire	695.3	15,236	21.9	24.0	23.8	23.0	22.1	
2 Cambridgeshire	737.9	17,437	23.6	30.6	25.8	25.5	24.4	
3 North Yorkshire	764.9	20,801	27.2	28.3	30.9	26.7	25.1	
4 Wiltshire	626.8	17,943	28.6	27.9	27.3	25.7	24.9	
5 Lincolnshire	673.5	20,505	30.4	26.6	25.6	23.4	23.3	
6 Gloucestershire	572.8	17,487	30.5	28.0	24.0	25.2	24.6	
7 Leicestershire	945.5	29,231	30.9	26.5	25.0	23.8	22.8	
8 Dorset	700.4	21,697	31.0	25.0	29.1	27.4	26.2	
9 Suffolk	683.7	21,279	31.1	26.3	26.2	24.7	23.6	
10 Derbyshire	979.2	30,685	31.3	27.1	27.7	26.8	26.0	
11 Northamptonshire	646.7	20,284	31.4	27.7	21.7	23.1	21.9	
12 Oxfordshire	619.8	19,441	31.4	26.5	25.9	24.7	23.3	
UPPER QUARTILE								
13 Hereford & Worcester	729.8	23,254	31.9	30.8	28.8	27.1	24.9	
14 Norfolk	816.5	26,266	32.2	28.3	28.9	26.5	25.8	
15 Staffordshire	1,050.6	33,843	32.2	29.8	27.2	25.8	24.0	
16 Somerset	512.5	16,638	32.5	31.9	27.9	28.2	27.4	
17 Hampshire	1,663.1	54,919	33.0	30.9	28.8	27.1	24.8	
18 Hertfordshire	1,041.3	35,705	34.3	29.7	28.9	27.7	27.1	
19 Shropshire	449.0	15,549	34.6	33.3	31.8	28.1	28.1	
20 Kent	1,610.3	56,435	35.0	32.2	30.7	29.8	28.9	
21 Warwickshire	525.5	18,447	35.1	34.2	34.4	32.7	31.3	
22 Cornwall	515.3	18,498	35.9	35.1	30.5	29.0	26.9	
23 Royal Berkshire	805.8	28,978	36.0	32.0	29.1	27.4	25.9	
24 Nottinghamshire	1,034.7	37,285	36.0	32.1	31.0	29.8	27.8	
25 Essex	1,635.6	59,236	36.2	33.4	31.8	30.7	29.5	
26 South Yorkshire	1,278.4	47,202	36.9	32.9	33.5	32.5	29.7	
27 West Yorkshire	2,108.0	78,405	37.2	33.1	33.9	32.1	30.7	
28 Bedfordshire & Luton	576.2	21,473	37.3	34.8	32.7	30.6	28.7	
29 Cumbria	494.8	18,643	37.7	34.2	33.7	32.4	32.1	
30 West Midlands	2,579.2	97,872	37.9	33.5	34.6	33.7	32.1	
31 Greater Manchester	2,539.0	96,887	38.2	36.4	37.2	35.2	34.2	
32 Lancashire	1,434.9	54,775	38.2	35.9	33.8	32.1	31.1	
33 County Durham & Darlington	595.4	22,837	38.4	40.1	34.9	34.0	30.9	
34 Surrey	1,067.2	41,231	38.6	34.1	34.2	32.8	30.8	
35 West Sussex	761.9	29,750	39.0	34.7	32.9	29.9	29.4	
36 Avon	1,006.6	39,350	39.1	34.9	34.0	31.6	30.2	
37 Cheshire	992.6	39,366	39.7	34.3	29.2	28.0	26.0	
38 Devon	1,101.6	43,694	39.7	35.4	33.5	31.6	30.4	
39 East Sussex	748.6	31,357	41.9	28.0	36.2	32.8	30.8	
40 Humberside	887.5	38,224	43.1	37.0	36.9	35.6	34.9	
41 Tyne & Wear	1,085.6	49,243	45.4	41.0	43.8	41.6	40.3	
42 Isle Of Wight	138.4	6,585	47.6	42.7	41.3	40.5	35.9	
43 Merseyside	1,365.8	65,009	47.6	43.6	45.2	44.1	42.5	
44 Northumberland	310.8	15,370	49.5	44.6	42.4	39.7	37.8	
45 London	7,429.2	378,461	50.9	45.7	45.3	42.4	40.1	
46 Cleveland ⁽⁵⁾	553.3	33,008	59.7	52.4	47.5	45.4	42.6	

STAFFORDSHIRE 34.79
 HEREFORD & WORCESTER 35.2
 SHROPSHIRE 39.98
 WARWICKSHIRE 40.99
 WEST MIDLANDS 42.25

⁽¹⁾ Source: ONS 2004 mid-year estimates.

⁽²⁾ Source: DCLG Local Government Finance RO6 return.

⁽³⁾ The data for 2003/04 and 2004/05 have been collected on an FRS17 basis. The main difference between these and previous years is that decisions relating to pensions are accounted for in the year they are taken, rather than in the year to which they apply. As a result, comparisons between 2003/04 and 2004/05 and earlier years may not be valid.

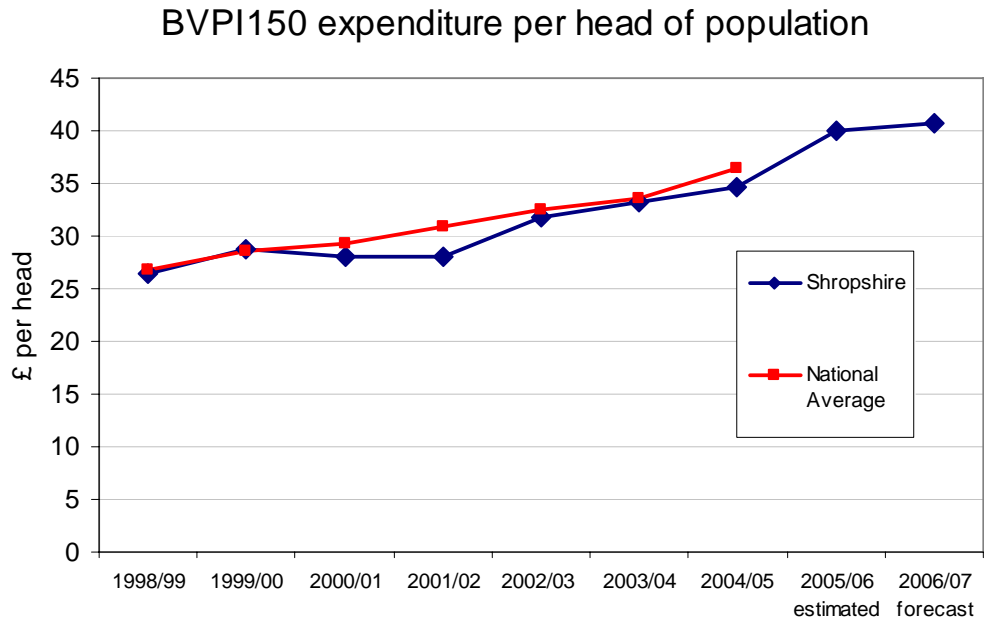
⁽⁴⁾ Data for all years have been revised following the publication of revised mid-year population estimates by ONS in October 2004.

⁽⁵⁾ 2003/04 was previously published as 53.2. It has been revised in the light of an amendment received from the Brigade.

Source: ODPM annual returns.

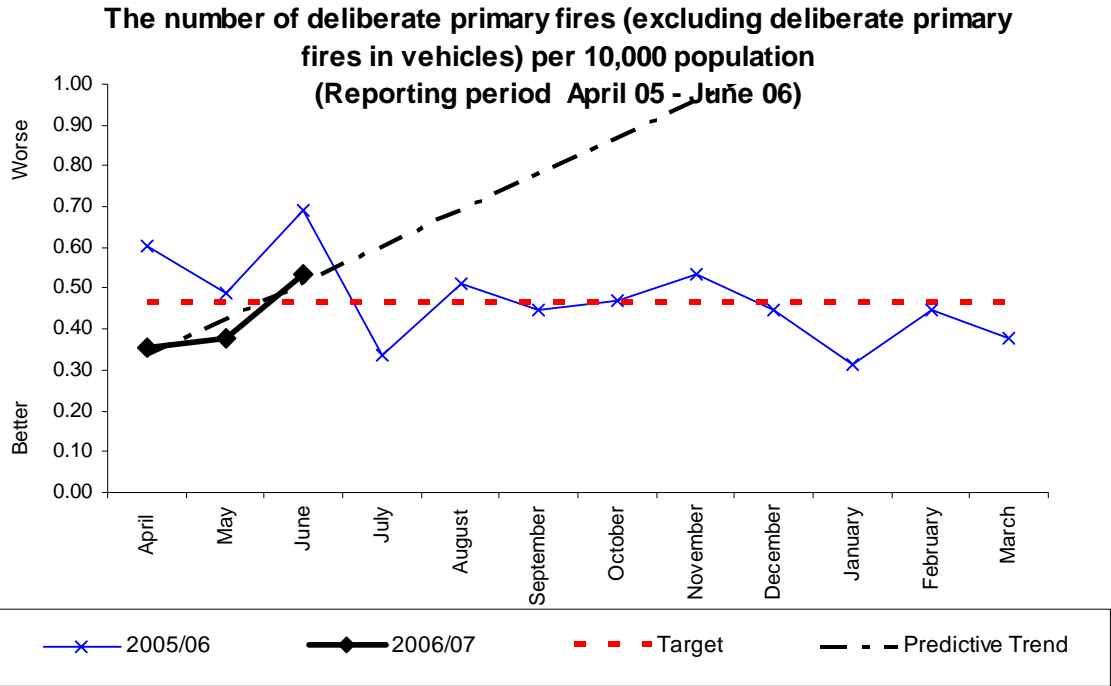
This BVPI is produced yearly and is taken from the CIPFA statistics. 2005/06 data is not yet verified by the DCLG, and 2006/07 is an estimate based on the budget.

BVPI 150 concerns the expenditure per head of population on the provision of fire and rescue services. For information purposes, a graph of historic verified data is shown, with comparison made with the national average.



BV 206i - The number of deliberate primary fires (excluding deliberate primary fires in vehicles) per 10,000 population

	Number of deliberate primary fires per			REGIONAL	SHROPSHIRE
	2004/05 ^(P)	2003/04	2002/03	ESTIMATED SUBMISSION 2005/06	ESTIMATED 2006/07 based on Q1
1 Hereford & Worcester	3.0	n/a	n/a	HEREFORD & WORCESTER 2.6	
2 Staffordshire	4.6	n/a	n/a	WARWICKSHIRE 3.6	
3 Shropshire	6.3	6.4	7.4	STAFFORDSHIRE 4.8	
4 West Midlands	9.1	9.5	9.1	SHROPSHIRE 5.7	5.0
5 Warwickshire	n/a	n/a	n/a	WEST MIDLANDS 6.6	



Monthly Stats (per 10,000 population)

	Apr	May	June	July	Aug	Sept	Oct	Nov	Dec	Jan	Feb	Mar	YTD
2006	0.36	0.38	0.53										1.27
2005	0.60	0.49	0.69	0.33	0.51	0.45	0.47	0.53	0.45	0.31	0.45	0.38	5.66
2004	No previous data as this is a new BVPI												

Monthly Stats (actual incidents)

	Apr	May	June	July	Aug	Sept	Oct	Nov	Dec	Jan	Feb	Mar	YTD
2006	16	17	24										57
2005	27	22	31	15	23	20	21	24	20	14	20	17	254
2004	No previous data as this is a new BVPI												

Analysis

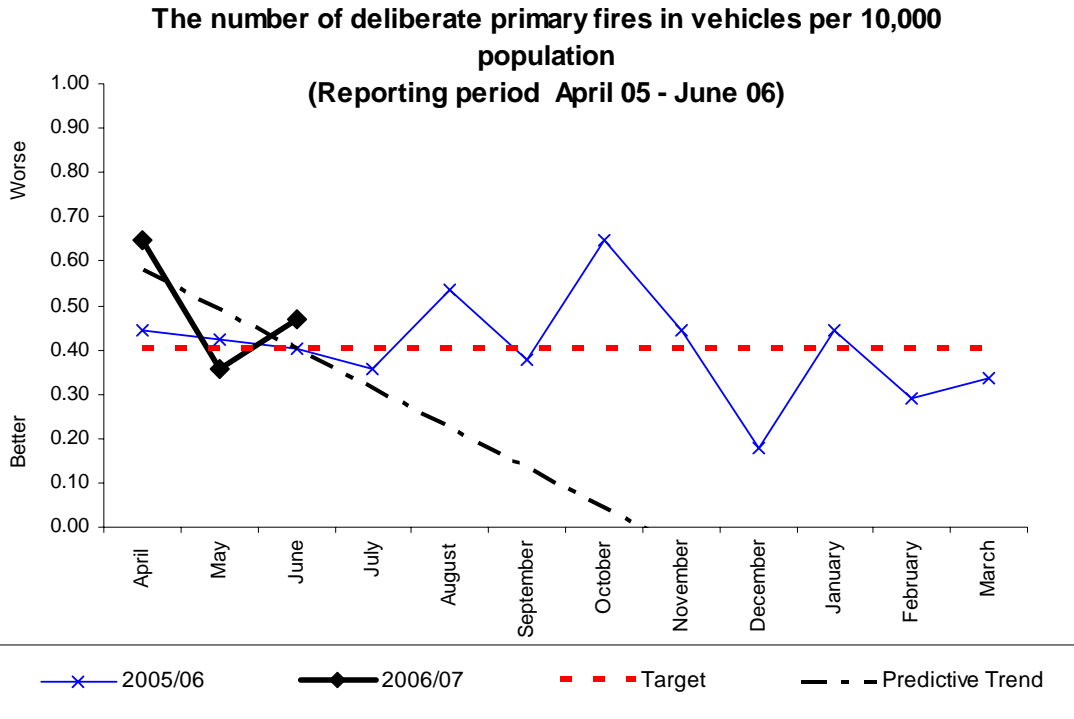
Yearly target	Will Authority achieve target? (Estimate using predictive trend)	Have current yearly results (including predictive trend) improved since last year?
5.6	√	√

Commentary

BV 206ii - The number of deliberate primary vehicle fires per 10,000 population

	Number of deliberate primary vehicle fires per 10,000 population			REGIONAL ESTIMATED SUBMISSION	SHROPSHIRE ESTIMATED
	2004/05 ^(p)	2003/04	2002/03	2005/06	2006/07 based on Q1
1 Hereford & Worcester	4.8	n/a	n/a	HEREFORD & WORCESTER 3.8	
2 Shropshire	5.8	7.5	9.6	SHROPSHIRE 4.9	5.9
3 Staffordshire	8.3	n/a	n/a	STAFFORDSHIRE 7.7	
4 West Midlands	12.2	15.8	18.6	WARWICKSHIRE 9.0	
5 Warwickshire	n/a	n/a	n/a	WEST MIDLANDS 9.8	

206(ii)



Monthly Stats (per 10,000 population)

	Apr	May	June	July	Aug	Sept	Oct	Nov	Dec	Jan	Feb	Mar	YTD
2006	0.65	0.36	0.47										1.47
2005	0.45	0.42	0.40	0.36	0.53	0.38	0.65	0.45	0.18	0.45	0.29	0.33	4.88
2004	No previous data as this is a new BVPI												

Monthly Stats (actual incidents)

	Apr	May	June	July	Aug	Sept	Oct	Nov	Dec	Jan	Feb	Mar	YTD
2006	29	16	21										66
2005	20	19	18	16	24	17	29	20	8	20	13	15	219
2004	No previous data as this is a new BVPI												

Analysis

Yearly target	Will Authority achieve target? (Estimate using predictive trend)	Have current yearly results (including predictive trend) improved since last year?
4.84	X	X

Commentary

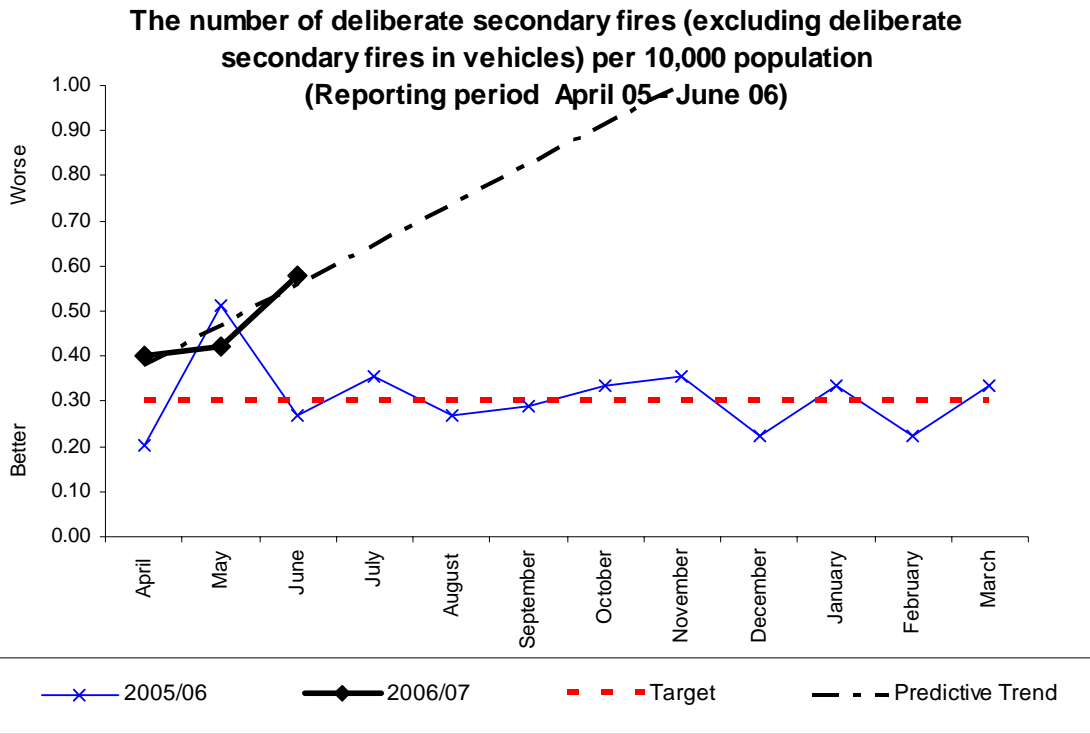
BV 206iii - The number of deliberate secondary fires (excluding deliberate primary fires in vehicles) per 10,000 population

	Number of deliberate secondary fires			REGIONAL	SHROPSHIRE
	2004/05 ^(p)	2003/04	2002/03	ESTIMATED SUBMISSION 2005/06	ESTIMATED 2006/07 based on Q1
1 Shropshire	3.7	5.9	4.3	SHROPSHIRE 3.7	5.6
2 Hereford & Worcester	16.3	n/a	n/a	HEREFORD & WORCESTER 15.8	
3 West Midlands	41.2	73.4	54.6	WARWICKSHIRE 24.7	
4 Staffordshire	n/a	n/a	n/a	STAFFORDSHIRE 35.7	
5 Warwickshire	n/a	n/a	n/a	WEST MIDLANDS 44.3	

* DEFINITION OF THIS INDICATOR CURRENTLY UNDER SCRUTINY

BVPI 206(iii) TABLE INSERTION

206(iii)



Monthly Stats (per 10,000 population)

	Apr	May	June	July	Aug	Sept	Oct	Nov	Dec	Jan	Feb	Mar	YTD
2006	0.40	0.42	0.58										1.40
2005	0.20	0.51	0.27	0.36	0.27	0.29	0.33	0.36	0.22	0.33	0.22	0.33	3.70
2004	No previous data as this is a new BVPI												

Monthly Stats (actual incidents)

	Apr	May	June	July	Aug	Sept	Oct	Nov	Dec	Jan	Feb	Mar	YTD
2006	18	19	26										63
2005	9	23	12	16	12	13	15	16	10	15	10	15	166
2004	No previous data as this is a new BVPI												

Analysis

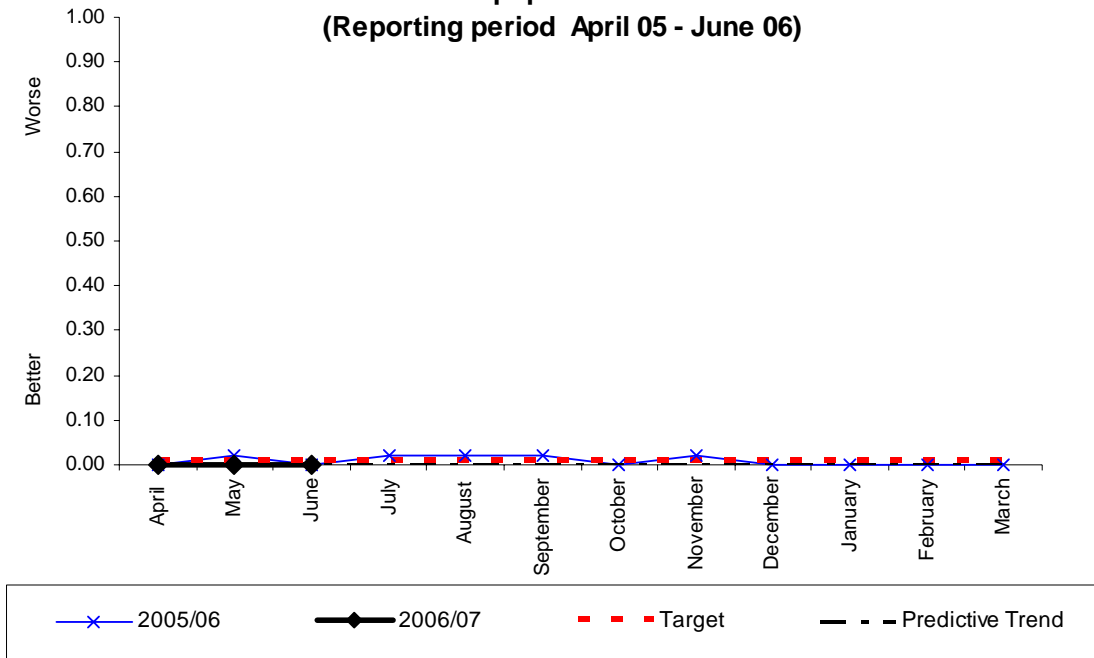
Yearly target	Will Authority achieve target? (Estimate using predictive trend)	Have current yearly results (including predictive trend) improved since last year?
3.6	X	X

Commentary

BV 206iv - The number of deliberate secondary vehicle fires per 10,000 population

	Number of deliberate secondary vehicle fires per 10,000 population			REGIONAL ESTIMATED SUBMISSION 2005/06	SHROPSHIRE ESTIMATED 2006/07 based on Q1
	2004/05 ^(p)	2003/04	2002/03		
1 Shropshire	0.1	0.1	0.2	SHROPSHIRE 0.1	0.1
2 Hereford & Worcester	0.7	n/a	n/a	STAFFORDSHIRE 0.4	
3 West Midlands	0.9	1.7	1.7	HEREFORD & WORCESTER 0.5	
4 Staffordshire	n/a	n/a	n/a	WEST MIDLANDS 0.6	
5 Warwickshire	n/a	n/a	n/a	WARWICKSHIRE 0.9	

**The number of deliberate secondary fires in vehicles per 10,000 population
(Reporting period April 05 - June 06)**



Monthly Stats (per 10,000 population)

	Apr	May	June	July	Aug	Sept	Oct	Nov	Dec	Jan	Feb	Mar	YTD
2006	0.00	0.00	0.00										0.00
2005	0.00	0.02	0.00	0.02	0.02	0.02	0.00	0.02	0.00	0.00	0.00	0.00	0.11
2004	No previous data as this is a new BVPI												

Monthly Stats (actual incidents)

	Apr	May	June	July	Aug	Sept	Oct	Nov	Dec	Jan	Feb	Mar	YTD
2006	0	0	0										0
2005	0	1	0	1	1	1	0	1	0	0	0	0	5
2004	No previous data as this is a new BVPI												

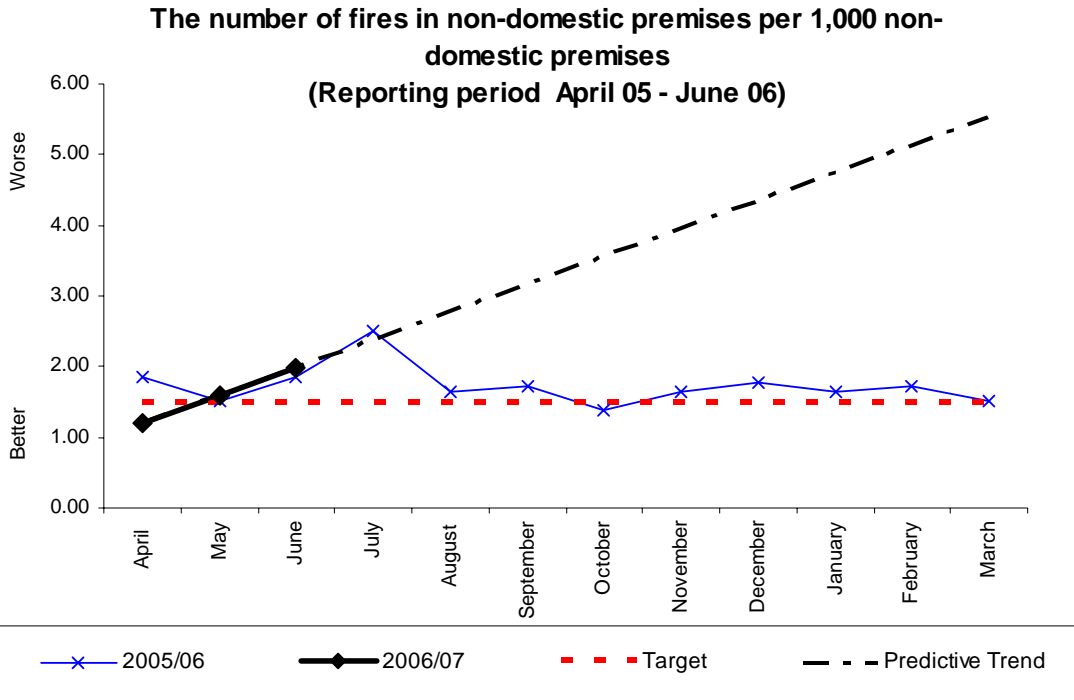
Analysis

Yearly target	Will Authority achieve target? (Estimate using predictive trend)	Have current yearly results (including predictive trend) improved since last year?
0.1	√	√

Commentary

BV 207 - The number of fires in non-domestic premises per 1,000 non-domestic properties

	Number of non-domestic premises fires per 1,000 properties			REGIONAL ESTIMATED SUBMISSION	SHROPSHIRE ESTIMATED
	2004/05 ^(p)	2003/04	2002/03	2005/06	2006/07 based on Q1
1 Hereford & Worcester	9.5	n/a	n/a	HEREFORD & WORCESTER 10.1	
2 West Midlands	20.9	24.1	23.3	STAFFORDSHIRE 13.2	
3 Shropshire	20.4	19.7	22.8	WEST MIDLANDS 18.0	
4 Staffordshire	n/a	n/a	n/a	WARWICKSHIRE 20.6	
5 Warwickshire	n/a	n/a	n/a	SHROPSHIRE 20.8	19.0



Monthly Stats (per 10,000 population)

	Apr	May	June	July	Aug	Sept	Oct	Nov	Dec	Jan	Feb	Mar	YTD
2006	1.19	1.58	1.98										4.75
2005	1.72	1.25	1.25	1.91	1.85	1.85	1.19	1.58	1.65	1.32	1.58	1.45	18.61
2004	No previous data as this is a new BVPI												

Monthly Stats (actual incidents)

	Apr	May	June	July	Aug	Sept	Oct	Nov	Dec	Jan	Feb	Mar	YTD
2006	18	24	30										72
2005	26	19	19	29	28	28	18	24	25	20	24	22	282
2004	No previous data as this is a new BVPI												

Analysis

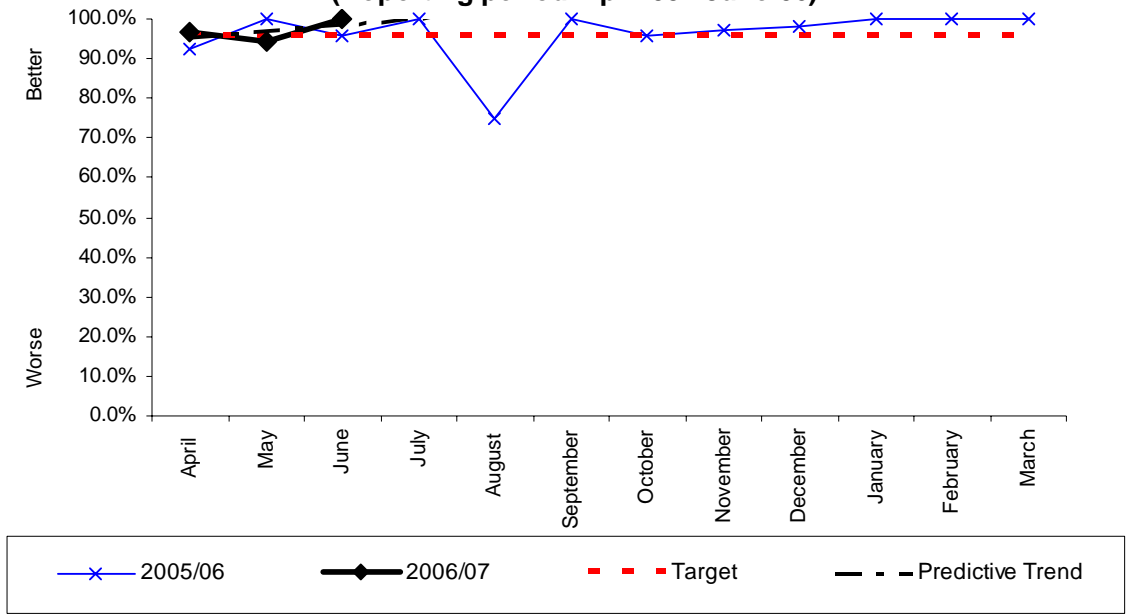
Yearly target	Will Authority achieve target? (Estimate using predictive trend)	Have current yearly results (including predictive trend) improved since last year?
20	√	X

Commentary

BV 208 - The percentage of people in accidental dwelling fires who escaped unharmed without any assistance

	% of people escaped unharmed wwithout assistance				REGIONAL	SHROPSHIRE
	2004/05 ^(b)	2003/04	2002/03		ESTIMATED SUBMISSION 2005/06	ESTIMATED 2006/07 based on Q1
1 Shropshire	98.7	98.0	98.5	→	STAFFORDSHIRE 96.5	97.1
2 Hereford & Worcester	93.2	n/a	n/a		SHROPSHIRE 96.4	
3 West Midlands	91.8	93.5	92.1		HEREFORD & WORCESTER 93.6	
4 Staffordshire	n/a	n/a	n/a		WEST MIDLANDS 92.4	
5 Warwickshire	n/a	n/a	n/a		WARWICKSHIRE 84.0	

**The percentage of people in accidental dwelling fires who escaped unharmed without FRA assistance at the fire
(Reporting period April 05 - June 06)**



Monthly Stats (percentage)

	Apr	May	June	July	Aug	Sept	Oct	Nov	Dec	Jan	Feb	Mar
2006	96.88%	94.12%	100%									
2005	92.31%	100%	95.56%	100%	75.00%	100%	95.65%	96.97%	98.04%	100%	100%	100%
2004	No previous data as this is a new BVPI											

Monthly Stats (people/total)

	Apr	May	June	July	Aug	Sept	Oct	Nov	Dec	Jan	Feb	Mar	YTD	%
2006	31/32	16/17	25/25										72/74	97.30
2005	24/26	14/14	43/45	18/18	12/16	29/29	22/23	32/33	50/51	20/20	26/26	29/29	319/330	96.66
2004	No previous data as this is a new BVPI													

Analysis

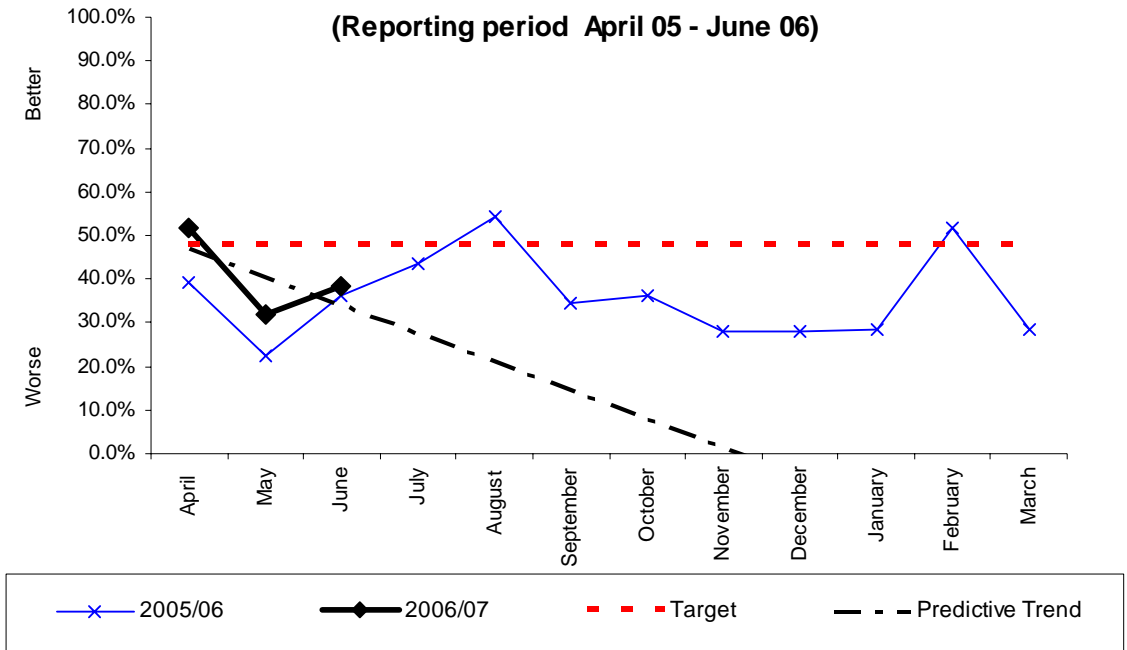
Yearly target	Will Authority achieve target? (Estimate using predictive trend)	Have current yearly results (including predictive trend) improved since last year?
95.97%	√	√

Commentary

BV 209i - The percentage of dwelling fires attended where a smoke alarm activated and raised the alarm

	% smoke alarm activated				REGIONAL	SHROPSHIRE
	2004/05 ^(p)	2003/04	2002/03		ESTIMATED SUBMISSION 2005/06	ESTIMATED 2006/07 based on Q1
1 Shropshire	37.4	36.3	33.6	→	WARWICKSHIRE 41.0	→ 41.3
2 Hereford & Worcester	34.6	n/a	n/a	→	SHROPSHIRE 35.8	→
3 West Midlands	22.6	21.3	20.3		HEREFORD & WORCESTER 35.4	
4 Staffordshire	n/a	n/a	n/a		STAFFORDSHIRE 20.5	
5 Warwickshire	n/a	n/a	n/a		WEST MIDLANDS 17.3	

The percentage of fires attended in dwellings where a smoke alarm had activated
(Reporting period April 05 - June 06)



Monthly Stats (percentage)

	Apr	May	June	July	Aug	Sept	Oct	Nov	Dec	Jan	Feb	Mar
2006	51.52%	31.82%	38.46%									
2005	39.29%	22.22%	36.36%	43.48%	54.17%	34.62%	36.36%	28.13%	28.21%	28.57%	51.85%	28.57%
2004	No previous data as this is a new BVPI											

Monthly Stats (actual incidents/total dwelling fires)

	Apr	May	June	July	Aug	Sept	Oct	Nov	Dec	Jan	Feb	Mar	YTD	%
2006	17/33	7/22	10/26										34/81	41.98%
2005	11/28	4/18	12/33	10/23	13/24	9/26	8/22	9/32	11/39	6/21	14/27	8/28	115/321	35.83%
2004	No previous data as this is a new BVPI													

Analysis

Yearly target	Will Authority achieve target? (Estimate using predictive trend)	Have current yearly results (including predictive trend) improved since last year?
48%	X	√

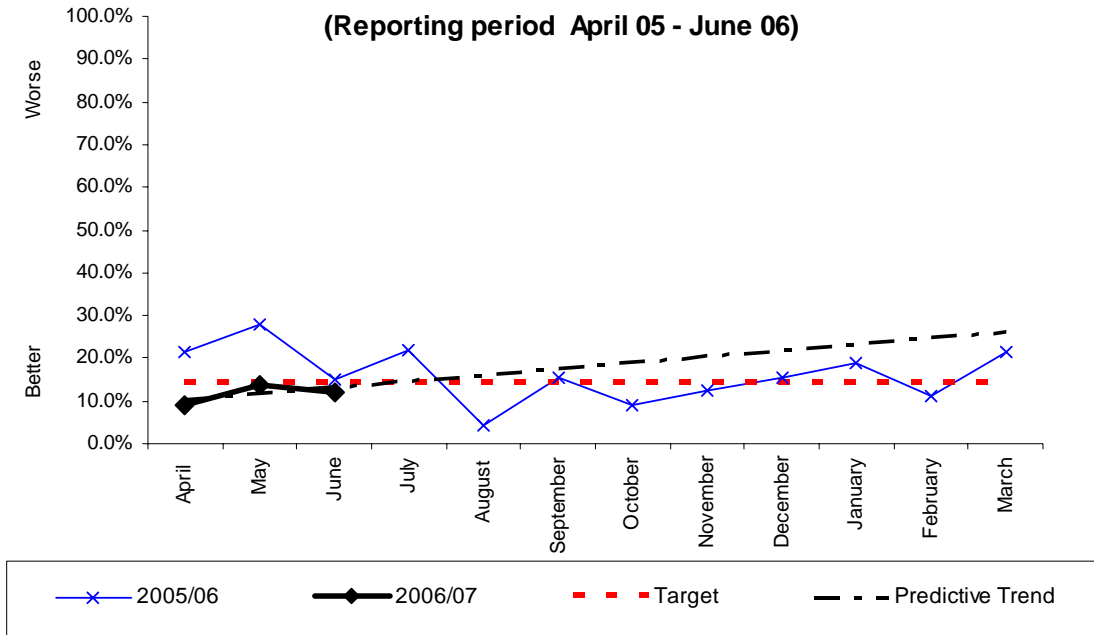
Commentary

BV 209ii - The percentage of dwelling fires attended where a smoke alarm was fitted but did not activate the alarm

	% smoke alarm fitted but not activated				REGIONAL	SHROPSHIRE
	2004/05 ^(p)	2003/04	2002/03		ESTIMATED SUBMISSION 2005/06	ESTIMATED 2006/07 based on Q1
1 West Midlands	11.9	12.0	14.2		HEREFORD & WORCESTER 9.6	
2 Hereford & Worcester	12.2	n/a	n/a		WEST MIDLANDS 11.0	
3 Shropshire	12.3	16.1	12.3	→	STAFFORDSHIRE 13.6	11.3
4 Staffordshire	n/a	n/a	n/a	→	SHROPSHIRE 15.9	
5 Warwickshire	n/a	n/a	n/a		WARWICKSHIRE 17.0	

209(ii)

**The percentage of fires attended in dwellings where a smoke alarm was fitted but did not activate
(Reporting period April 05 - June 06)**



Monthly Stats (percentage)

	Apr	May	June	July	Aug	Sept	Oct	Nov	Dec	Jan	Feb	Mar
2006	9.09%	13.64%	12.00%									
2005	21.43%	27.78%	15.15%	21.74%	4.17%	15.38%	9.09%	12.50%	15.38%	19.05%	11.11%	21.43%
2004	No previous data as this is a new BVPI											

Monthly Stats (actual incidents/total)

	Apr	May	June	July	Aug	Sept	Oct	Nov	Dec	Jan	Feb	Mar	YTD	%
2006	3/33	3/22	3/25										9/80	11.25%
2005	6/28	5/18	5/33	5/23	1/24	4/26	2/22	4/32	6/39	4/21	3/27	6/28	51/321	15.89%
2004	No previous data as this is a new BVPI													

Analysis

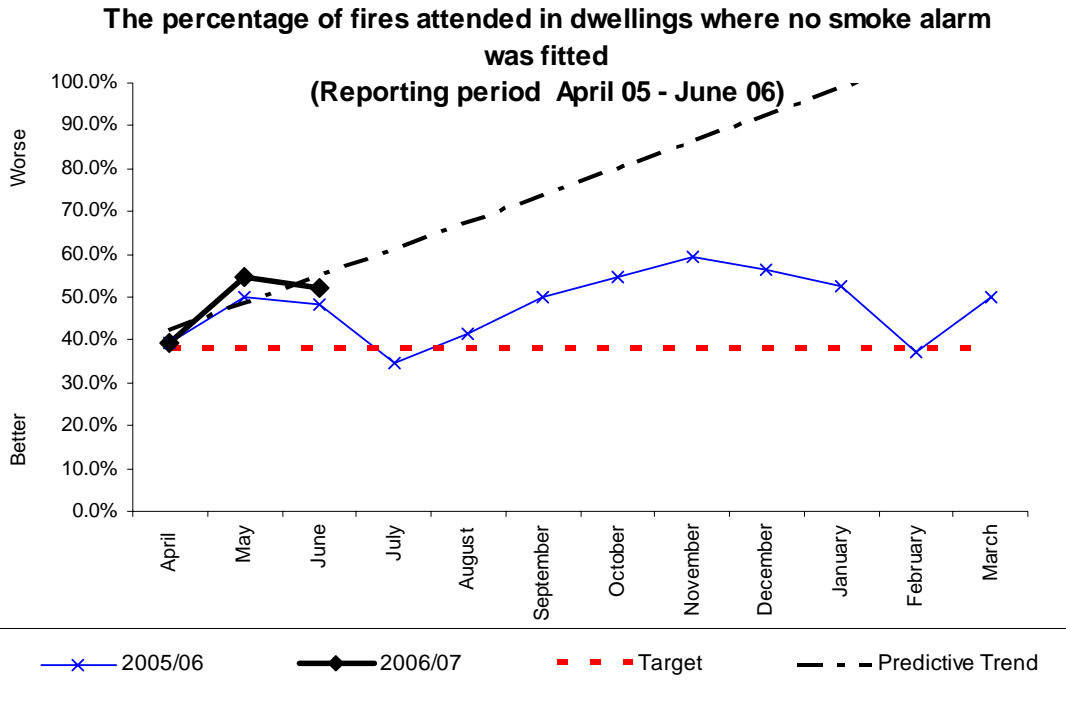
Yearly target	Will Authority achieve target? (Estimate using predictive trend)	Have current yearly results (including predictive trend) improved since last year?
14%	√	√

Commentary

BV 209iii - The percentage of dwelling fires attended where no smoke alarm was fitted

	% smoke alarm not fitted			REGIONAL ESTIMATED SUBMISSION 2005/06	SHROPSHIRE ESTIMATED 2006/07 based on Q1
	2004/05 ^(p)	2003/04	2002/03		
1 West Midlands	47.8	53.5	47.8	STAFFORDSHIRE 38.9	
2 Shropshire	50.3	47.6	54.1	WARWICKSHIRE 42.0	
3 Hereford & Worcester	58.8	n/a	n/a	SHROPSHIRE 48.3	47.5
4 Staffordshire	n/a	n/a	n/a	HEREFORD & WORCESTER 55.0	
5 Warwickshire	n/a	n/a	n/a	WEST MIDLANDS 56.3	

209(iii)



Monthly Stats (percentage)

	Apr	May	June	July	Aug	Sept	Oct	Nov	Dec	Jan	Feb	Mar
2006	39.39%	51.55%	52.00%									
2005	39.29%	50.00%	48.48%	34.78%	41.67%	50.00%	54.55%	59.38%	56.41%	52.38%	37.04%	50.00%
2004	No previous data as this is a new BVPI											

Monthly Stats (actual incidents/total)

	Apr	May	June	July	Aug	Sept	Oct	Nov	Dec	Jan	Feb	Mar	YTD	%
2006	13/33	12/22	13/35										38/80	47.50%
2005	11/28	9/18	16/33	8/23	10/24	13/26	12/22	19/32	22/39	11/21	10/27	14/28	155/321	48.29%
2004	No previous data as this is a new BVPI													

Analysis

Yearly target	Will Authority achieve target? (Estimate using predictive trend)	Have current yearly results (including predictive trend) improved since last year?
38%	X	√

Commentary

Local Standards of Cover for Incidents

LIFE RISKS Fires						
	Qualifying Incidents	Pass 5 FF	Pass Rate	Qualifying Incidents	Pass 8 FF	Pass Rate
Apr	21	18	86%	17	14	82%
May	19	14	74%	17	13	76%
Jun	14	12	86%	8	8	100%
Jul						
Aug						
Sep						
Oct						
Nov						
Dec						
Jan						
Feb						
Mar						
Total	54	44		42	35	
Pass Rate			81.48%			83.33%
Target			75.00%			95.00%

This table covers the attendance at fires classed as 'Life Risk, and is a monthly cumulative count on performance for the 2006/07 reporting year, which is the first reportable year. As such, the targets have been set against no historic data. Monitoring will continue monthly and reported view this report on a quarterly basis. Targets will be revisited if deemed necessary.

LIFE RISKS RTC's									
	Qualifying Incidents	Pass 5 FF	Pass Rate	Qualifying Incidents	Pass 8 FF	Pass Rate	Qualifying Incidents	Pass RT	Pass Rate
Apr	6	6	100%	5	2	40%	5	3	60%
May	7	6	86%	7	5	71%	7	4	57%
Jun	8	6	75%	8	5	63%	8	6	75%
Jul									
Aug									
Sep									
Oct									
Nov									
Dec									
Jan									
Feb									
Mar									
Total	21	18		20	12		20	13	
Pass Rate			85.71%			60.00%			65.00%
Target			77.00%			77.00%			85.00%

This table covers the attendance at road traffic collisions classed as 'Life Risk, and is a monthly cumulative count on performance for the 2006/07 reporting year, which is the first reportable year. As such, the targets have been set against no historic data. Monitoring will continue monthly and reported view this report on a quarterly basis. Targets will be revisited if deemed necessary.

BV 2a - level (if any) of the Equality Standard for Local Government to which the fire authority conforms

		Level reached					REGIONAL ESTIMATED SUBMISSION 2005/06	SHROPSHIRE ESTIMATED 2006/07 based on Q1
		2004/05	2003/04	2002/03 ⁽¹⁾	2001/02	2000/01		
1=	Essex	3	3	3		3		
1=	Hereford & Worcester	3	3	2		1	HEREFORD & WORCESTER LEVEL 3	
1=	London	3	2	2		2		
1=	South Yorkshire	3	3	3		2		
1=	West Yorkshire	3	3	3		2	STAFFORDSHIRE LEVEL 3	
6=	Buckinghamshire	2	2	2		2		
6=	County Durham & Darlington	2	<1	<1		<1		
6=	Derbyshire	2	1	1		1		
6=	Devon	2	2	2		<1		
6=	East Sussex	2	2	2		2		
6=	Hertfordshire	2	2	3		3		
6=	Isle Of Wight	2	1	1	N/Av	2		
6=	Lancashire	2	2	2		2		
6=	Norfolk	2	2	2		2		
6=	Shropshire	2	2	1		3	SHROPSHIRE LEVEL	LEVEL 2
6=	Somerset	2	2	1		1		
6=	Staffordshire	2	1	2		2		
6=	Suffolk	2	1	1		1	WARWICKSHIRE LEVEL 2	
6=	Warwickshire	2	2	1		2	WEST MIDLANDS LEVEL 2	
UPPER QUARTILE								
20=	Avon	1	2	1		1		
20=	Bedfordshire & Luton	1	x	x		x		<1
20=	Cornwall	1	1	x		x		N/Av
20=	Cumbria	1	1	1		1		N/Av
20=	Dorset	1	1	1		<1		x
20=	Gloucestershire	1	3	2		3		3
20=	Greater Manchester	1	<1	<1		x		N/Av
20=	Humberside	1	1	3		3		3
20=	Kent	1	1	1		1		1
20=	Leicestershire	1	1	1		1		1
20=	Merseyside	1	2	1		1		1
20=	North Yorkshire	1	1	2		2		1
20=	Northamptonshire	1	1	1		1		1
20=	Northumberland	1	1	1		1		N/Av
20=	Nottinghamshire	1	1	1		2		2
20=	Oxfordshire	1	1	1		3		3
20=	Royal Berkshire	1	1	1		1		1
20=	Surrey	1	1	1		1		2
20=	Tyne & Wear	1	<1	<1		2		2
20=	West Midlands	1	1	1		1		1
20=	West Sussex	1	1	1		1		1
20=	Wiltshire ⁽²⁾	1	1	1		1		1
42=	Cambridgeshire	<1	x	x		x		x
42=	Cheshire	<1	1	2		2		1
42=	Cleveland	<1	<1	1		1		1
42=	Hampshire	<1	<1	1		1		1
42=	Lincolnshire	<1	<1	1		2		2

⁽¹⁾ The change in the definition of the levels reached means that data for 2002/03 onwards are not directly comparable with data for previous years.

⁽²⁾ 2000/01 and 2001/02 have been previously published as Level 2. They were revised in the light of amendments received from the fire and rescue service.

<1 This authority is working towards achieving Level 1.

x This authority has not adopted the Equality Standard for Local Government.

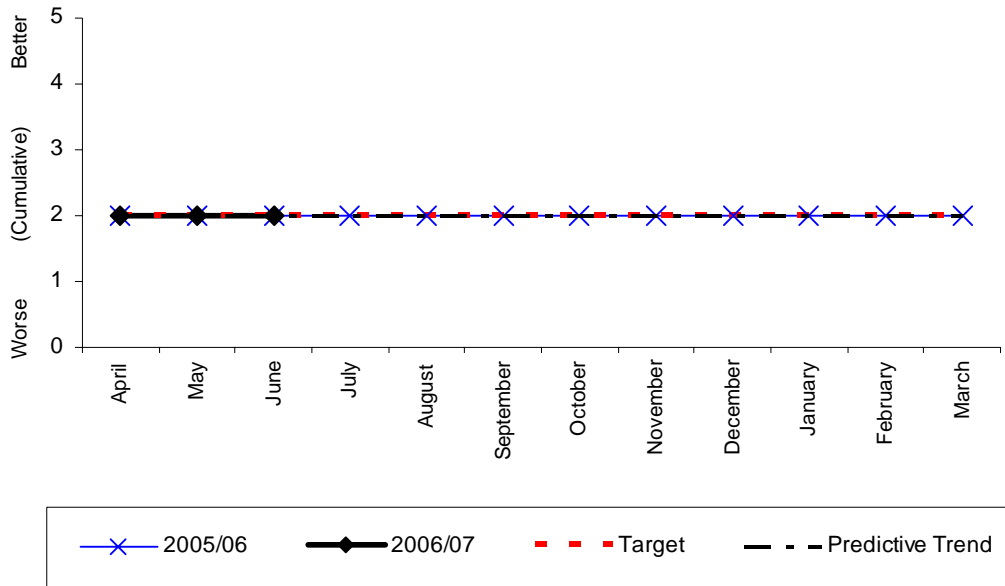
N/Av Not available.

Source: DCLG annual returns.

Corporate Health Indicators

2a

The equality standard for local government (Reporting period Quarter 1 2005 - Quarter 1 2006)



Monthly Stats (level)

	Apr	May	June	July	Aug	Sept	Oct	Nov	Dec	Jan	Feb	Mar
2006		2										
2005		2			2			2			2	
2004		1			1			1			2	

Monthly Stats (actual incidents)

	Apr	May	June	July	Aug	Sept	Oct	Nov	Dec	Jan	Feb	Mar
2006	-	-	-	-	-	-	-	-	-	-	-	-
2005	-	-	-	-	-	-	-	-	-	-	-	-
2004	-	-	-	-	-	-	-	-	-	-	-	-

Analysis

Yearly target	Will Authority achieve target? (Estimate using predictive trend)	Have current yearly results (including predictive trend) improved since last year?
2	√	=

Commentary

Level 2 has been achieved, and progress towards Level 3 is ongoing.

BV 2b - The duty to promote race equality

		Points 'score' as a percentage of the total possible 'score'		REGIONAL ESTIMATED SUBMISSION	SHROPSHIRE ESTIMATED
		2004/05	2003/04	2005/06	2006/07 based on Q1
1=	Cheshire	100	100		
1=	Devon	100	89	WEST MIDLANDS 100	
3=	Nottinghamshire	95	89		
3=	Oxfordshire	95	42		
3=	Somerset	95	53		
3=	West Yorkshire	95	89		
7=	Norfolk	89	89	HEREFORD & WORCESTER 89	
7=	Shropshire	89	79	SHROPSHIRE 89	89
7=	Warwickshire	89	100	STAFFORDSHIRE 89	
10=	Lancashire	84	79		
10=	Staffordshire	84	47		
10=	West Sussex	84	89		
UPPER QUARTILE					
13=	Avon	79	66		
13=	Buckinghamshire	79	68		
13=	Hertfordshire	79	42		
13=	Kent	79	58		
13=	South Yorkshire	79	84		
18=	Greater Manchester	74	58	WARWICKSHIRE 74	
18=	Hampshire	74	74		
18=	Hereford & Worcester	74	58		
18=	Merseyside	74	100		
18=	Tyne & Wear	74	68		
23=	Cleveland	68	63		
23=	Cornwall	68	47		
23=	North Yorkshire	68	47		
26=	Isle Of Wight	63	63		
26=	London	63	63		
28	Northamptonshire	58	47		
29=	Derbyshire	53	0		
29=	Dorset	53	47		
29=	Lincolnshire	53	53		
29=	Northumberland	53	47		
29=	Suffolk	53	N/Av		
34=	County Durham & Darlington	47	42		
34=	Cumbria	47	16		
34=	Humberside	47	84		
34=	Surrey	47	47		
34=	Wiltshire	47	32		
39	Bedfordshire & Luton	42	42		
40=	Leicestershire	37	37		
40=	Royal Berkshire	37	47		
42	West Midlands	32	58		
43	East Sussex	21	21		
44=	Cambridgeshire	16	0		
44=	Essex	16	79		
46	Gloucestershire	N/Pr	68		

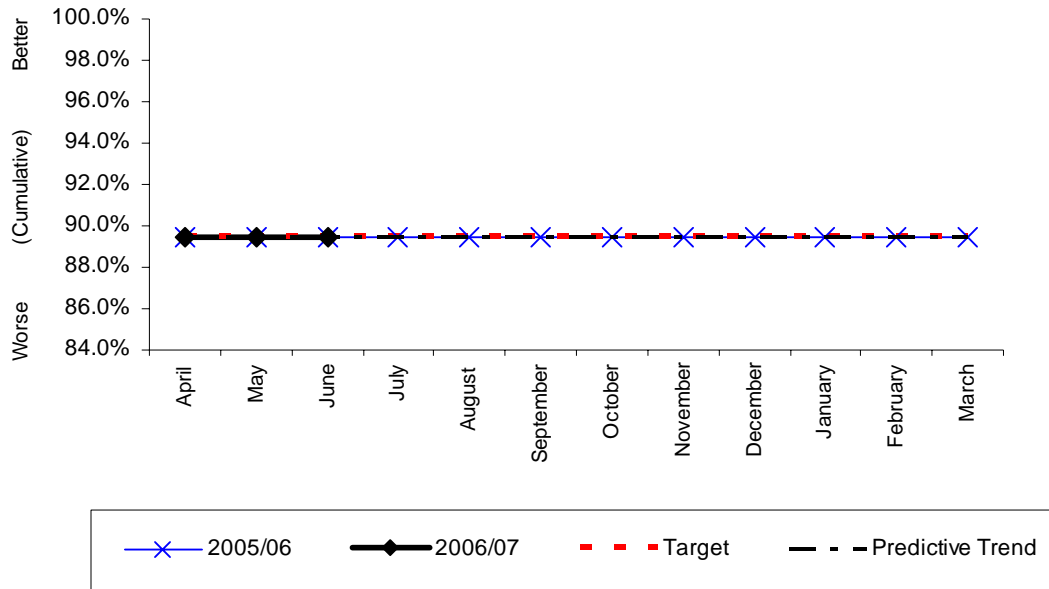
N/Pr Not provided.

N/Av Not available.

Source: DCLG annual returns.

2b

**The duty to promote race equality
(Reporting period Quarter 1 2005 - Quarter 1 2006)**



Monthly Stats (percentage)

	Apr	May	June	July	Aug	Sept	Oct	Nov	Dec	Jan	Feb	Mar
2006	89%											
2005	89%			89%			89%			89%		
2004	No previous data as this is a new BVPI											

Monthly Stats (Out of 19 qualities)

	Apr	May	June	July	Aug	Sept	Oct	Nov	Dec	Jan	Feb	Mar
2006	17											
2005	17		17			17			17			
2004	No previous data as this is a new BVPI											

Analysis

Yearly target	Will Authority achieve target? (Estimate using predictive trend)	Have current yearly results (including predictive trend) improved since last year?
89%	√	=

Commentary

BV 8 - percentage of invoices for commercial goods and services that were paid by the fire authority within 30 days of such invoices being received by the authority⁽¹⁾

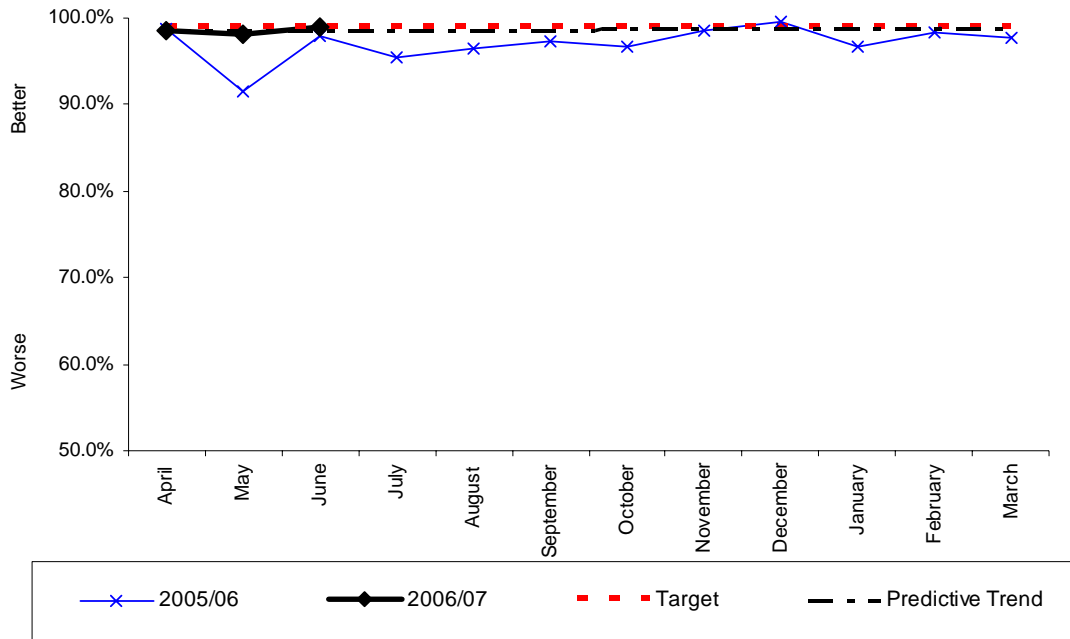
	Total number of all invoices paid	Number of invoices paid within mutually agreed terms or 30 days	Percentage of invoices paid within mutually agreed terms or 30 days					REGIONAL ESTIMATED SUBMISSION 2005/06	SHROPSHIRE ESTIMATED 2006/07 based on Q1
			2004/05	2003/04	2002/03	2001/02	2000/01		
1 Derbyshire	10,973	10,923	99.5	99.9	99.6	93.2	90.6		
2 Merseyside	14,425	14,320	99.3	99.8	98.4	92.7	74.0		
3 West Yorkshire	16,088	15,839	98.5	97.6	94.1	92.9	91.7	97.1	
4 Devon	13,735	13,501	98.3	97.2	96.6	96.5	92.7		
5 County Durham & Darlington	5,991	5,886	98.2	96.5	94.5	83.7	75.2		
6 South Yorkshire	9,147	8,937	97.7	97.0	97.8	98.3	98.0		
7 Kent	14,803	14,441	97.6	94.3	94.1	94.1	92.5		
8 Shropshire	4,221	4,111	97.4	98.0	98.5	97.8	94.1	→ SHROPSHIRE 97.1	
UPPER QUARTILE									
9 Cleveland	5,408	5,212	96.4	97.8	98.5	97.1	94.0		
10 North Yorkshire	7,103	6,832	96.2	96.2	93.7	91.0	86.9		
11 Hereford & Worcester	5,824	5,538	95.1	93.1	93.1	84.5	92.0		
12 Hampshire	8,991	8,459	94.1	95.8	94.6	94.0	89.7		
13 Dorset	6,345	5,920	93.3	90.2	84.9	84.6	70.8		
14 Lancashire	9,308	8,656	93.0	87.0	91.0	70.2	54.5	WEST MIDLANDS 93.1	
15 Royal Berkshire	4,857	4,513	92.9	88.5	89.3	86.3	83.5		
16 Leicestershire	7,717	6,977	90.4	85.6	78.0	66.5	54.0	HEREFORD & WORCESTER 91.0	
17 East Sussex	11,963	10,715	89.6	98.9	98.1	97.8	98.1		
18 London	44,674	39,716	88.9	90.6	76.0	76.5	67.1	WARWICKSHIRE 88.9	
19 Cheshire	8,201	7,231	88.2	84.3	84.0	76.9	78.4		
20 Nottinghamshire	8,684	7,610	87.6	86.8	91.8	75.6	34.2		
21 Buckinghamshire	13,571	11,852	87.3	93.5	93.3	93.7	93.3		
22 West Midlands	16,933	14,666	86.6	83.7	95.1	95.5	94.4		
23 Essex	15,399	13,292	86.3	85.1	80.4	84.7	76.5		
24 Bedfordshire & Luton ⁽²⁾	6,822	5,809	85.2	N/Av	N/Av	80.0	83.0		
25 Cambridgeshire	7,598	6,446	84.8	76.6	64.9	67.6	70.2		
26 Wiltshire	7,786	6,548	84.1	97.4	96.4	97.2	97.2		
27 Tyne & Wear	8,518	6,748	79.2	N/Av	89.5	79.0	94.7	STAFFORDSHIRE 82.56	
28 Avon	11,616	9,102	78.4	82.2	89.3	87.4	86.9		
29 Greater Manchester	18,621	13,516	72.6	78.0	92.0	82.0	N/Av		
30 Staffordshire	8,379	5,983	71.4	52.7	41.6	81.0	73.9		
31 Humberside	N/Av	N/Av	N/Av	96.0	96.5	95.3	92.9		

⁽¹⁾ Excludes county fire authorities, which are included in the Indicator published by county councils.

⁽²⁾ 2003/04 was previously published as 75.0. It has been amended to N/Av in the light of an update received from the Fire and Rescue Service. N/Av Not available.

Source: DCLG annual returns.

The percentage of undisputed invoices which were paid in 30 days
(Reporting period April 05 - June 06)



Monthly Stats (percentage)

	Apr	May	June	July	Aug	Sept	Oct	Nov	Dec	Jan	Feb	Mar
2006	98.6%	98.0%	98.9%									
2005	98.8%	91.4%	98.0%	95.5%	96.5%	97.3%	96.6%	98.5%	99.7%	96.6%	98.3%	97.6%
2004	99.7%	95.4%	95.3%	97.6%	99.2%	97.6%	96.0%	99.2%	99.7%	96.9%	99.0%	94.0%

Monthly Stats (invoices/total)

	Apr	May	June	July	Aug	Sept	Oct	Nov	Dec	Jan	Feb	Mar
2006	291/295	301/307	355/359									
2005	418/423	310/339	342/349	382/400	388/402	398/409	375/388	321/326	310/311	430/455	297/302	411/421
2004	Data not stored locally (to be requested from the County Council if desired)											

YTD	%
947/961	98.54%

Analysis

Yearly target	Will Authority achieve target? (Estimate using predictive trend)	Have current yearly results (including predictive trend) improved since last year?
99%	X	√

Commentary

“The number of invoices for commercial goods and services within mutually agreed term or 30 days if such terms do not exist”

Source DCLG Best Value Performance Indicators: 2005/06

BV 11a - percentage of top 5% of earners that are women

	Top % of earners		Percentage of women				REGIONAL ESTIMATED SUBMISSION	SHROPSHIRE ESTIMATED
	Women	All	2004/05	2003/04	2002/03	2001/02 ⁽¹⁾	2005/06	2006/07 based on Q1
	2004/05	2004/05	2004/05	2003/04	2002/03	2001/02 ⁽¹⁾	2005/06	2006/07 based on Q1
1 Staffordshire	6	35	17.1	17.6	5.9	7.7	STAFFORDSHIRE 18.2	
2 Buckinghamshire	6	41	14.6	3.0	8.7	0.0		
3 London	44	354	12.4	9.9	N/Av	20.4		
4 West Sussex	3	30	10.0	5.6	2.8	0.0		
5 Northamptonshire	2	21	9.5	0.0	0.0	0.0		
6 Somerset	1	12	8.3	0.0	0.0	8.3		
7 Leicestershire	3	41	7.3	8.1	7.8	0.0		
8 Greater Manchester	11	155	7.1	5.4	0.8	0.0	SHROPSHIRE 7.1 → 7.1	
9 Suffolk	2	29	6.9	3.0	4.2	11.1		
10= Essex	4	60	6.7	7.0	8.5	11.1	WEST MIDLANDS 6.8	
10= Lincolnshire	1	15	6.7	21.4	0.0	0.0		
12 Cheshire	3	51	5.9	2.6	0.0	0.0		
UPPER QUARTILE								
13 Tyne & Wear	7	134	5.2	4.8	3.6	0.0		
14 Kent	3	59	5.1	4.8	3.3	7.7		
15 Warwickshire	1	20	5.0	19.0	5.3	0.0	WARWICKSHIRE 5.0	
16 Lancashire	3	61	4.9	6.6	3.2	7.1		
17 West Midlands	10	210	4.8	5.3	4.6	6.3		
18= North Yorkshire	2	43	4.7	6.3	4.0	0.0		
18= Surrey	2	43	4.7	4.9	4.3	0.0		
20= Cambridgeshire	1	22	4.5	13.6	14.8	20.0		
20= Hereford & Worcester	1	22	4.5	2.5	4.2	0.0		
20= Norfolk	1	22	4.5	4.2	5.0	14.3		
20= Shropshire	1	22	4.5	4.8	4.8	14.3		
24 Derbyshire	2	46	4.3	6.7	3.3	0.0		
25= Avon	2	50	4.0	2.0	2.0	9.1		
25= Cornwall	1	25	4.0	4.2	4.3	0.0		
27 Hampshire	3	78	3.8	4.3	7.0	20.0	HEREFORD & WORCESTER 3.8	
28 Cleveland	1	35	2.9	5.7	5.9	0.0		
29 East Sussex	1	37	2.7	5.6	3.4	11.1		
30= Devon	1	41	2.4	2.7	2.7	9.1		
30= Merseyside	2	82	2.4	1.2	1.2	0.0		
32 West Yorkshire	1	171	0.6	1.1	4.0	0.0		
33= Bedfordshire & Luton	0	25	0.0	3.3	5.4	0.0		
33= County Durham & Darlington ⁽²⁾	0	32	0.0	0.0	0.0	0.0		
33= Cumbria	0	25	0.0	0.0	0.0	0.0		
33= Dorset	0	22	0.0	0.0	0.0	0.0		
33= Gloucestershire	0	17	0.0	0.0	0.0	0.0		
33= Hertfordshire	0	50	0.0	0.0	0.0	0.0		
33= Humberside	0	54	0.0	0.0	0.0	0.0		
33= Isle Of Wight	0	5	0.0	0.0	0.0	0.0		
33= Northumberland	0	23	0.0	0.0	0.0	0.0		
33= Oxfordshire	0	20	0.0	0.0	0.0	0.0		
33= Royal Berkshire	0	29	0.0	0.0	0.0	21.1		
33= Wiltshire	0	17	0.0	0.0	0.0	0.0		
45= Nottinghamshire	N/Av	N/Av	N/Av	2.0	20.4	11.1		
45= South Yorkshire ⁽³⁾	N/Av	N/Av	N/Av	1.9	2.9	0.0		

⁽¹⁾ The change from senior managers being defined as the top 3 tiers of management in 2001/02, to the top 5% of earners, means that data for 2001/02 cannot be directly compared with data for 2002/03 onwards.

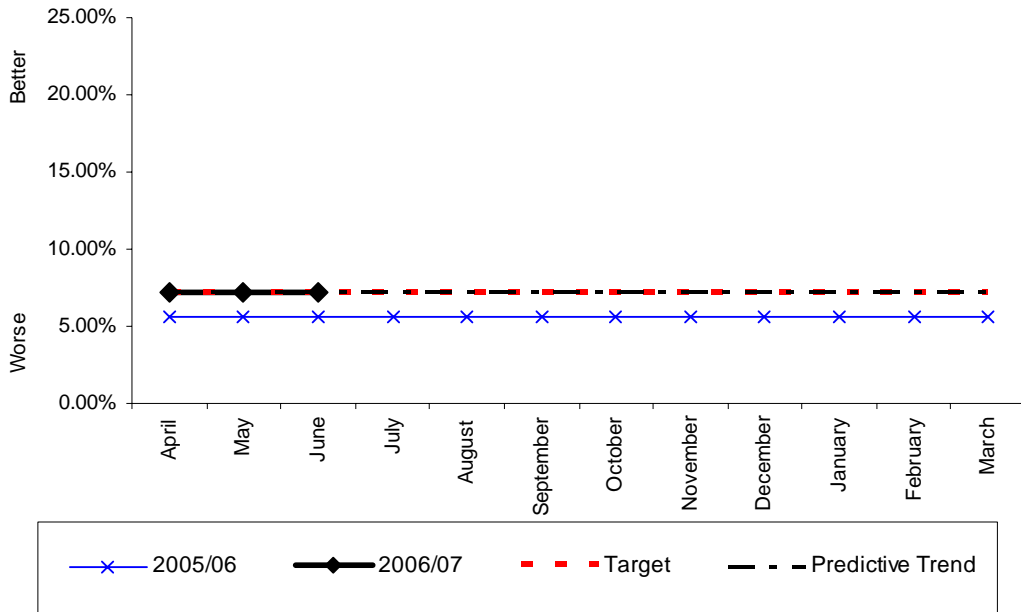
⁽²⁾ County Durham and Darlington appointed a female Chief Fire Officer in July 2005

⁽³⁾ 2002/03 was previously published as 5.3. It has been revised in the light of an amendment received from the Fire and Rescue Service.
N/Av Not available.

Source: DCLG annual returns.

11(a)

**The percentage of top 5% of earners that are women
(Reporting period April 05 - June 06)**



Monthly Stats (percentage)

	Apr	May	June	July	Aug	Sept	Oct	Nov	Dec	Jan	Feb	Mar
2006	7.14%	7.14%	7.14%									
2005	5.56%	5.56%	5.56%	5.56%	5.56%	5.56%	5.56%	5.56%	5.56%	5.56%	5.56%	5.56%
2004	4.76%	0%	0%	0%	0%	0%	0%	0%	0%	0%	5.00%	5.00%

Monthly Stats (people)

	Apr	May	June	July	Aug	Sept	Oct	Nov	Dec	Jan	Feb	Mar
2006	1	1	1									
2005	1	1	1	1	1	1	1	1	1	1	1	1
2004	1	0	0	0	0	0	0	0	0	0	1	1

Analysis

Yearly target	Will Authority achieve target? (Estimate using predictive trend)	Have current yearly results (including predictive trend) improved since last year?
7.14%	√	√

Commentary

The Authority has 14 staff within the top 5% earnings band of which there is 1 woman. Percentage improvement is due to re-basing the data on current staffing levels.

BV 11b - percentage of top 5% of earners from minority ethnic communities

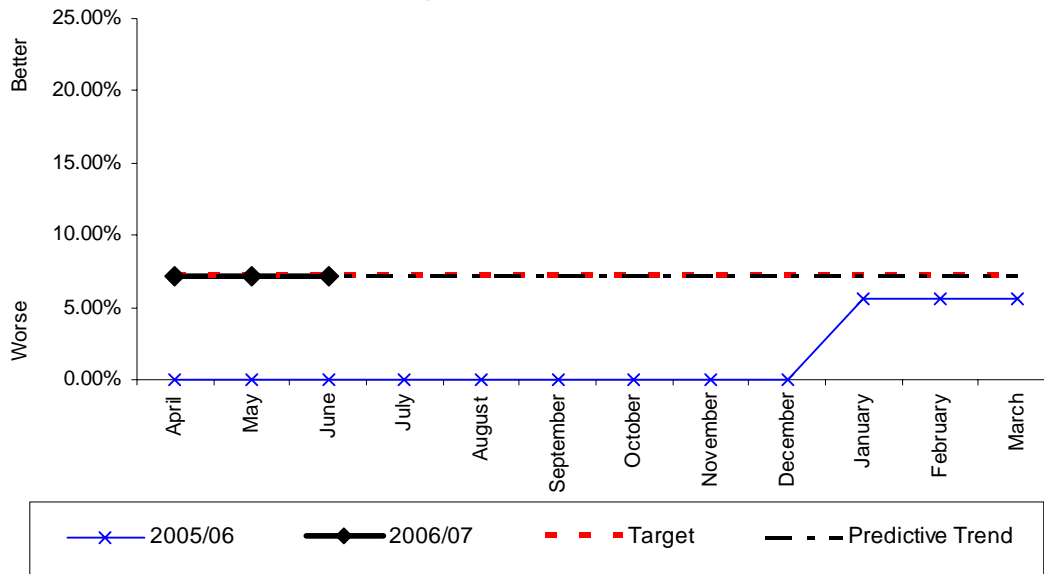
	Top 5% of earners		Percentage of minority ethnic			REGIONAL ESTIMATED SUBMISSION 2005/06	SHROPSHIRE ESTIMATED 2006/07 based on Q1
	Minority ethn ⁱ 2004/05	All 2004/05	2004/05	2003/04	2002/03		
1 London	29	354	8.2	4.8	N/Av		
2 Lincolnshire	1	15	6.7	7.1	5.0	SHROPSHIRE 7.1	7.1
3 Warwickshire	1	20	5.0	9.5	5.3	WARWICKSHIRE 5.0	
4 Northamptonshire	1	21	4.8	0.0	0.0		
5 Cambridgeshire	1	22	4.5	4.5	3.7		
6 Derbyshire	2	46	4.3	3.3	3.3		
7= Royal Berkshire	1	29	3.4	3.4	0.0		
7= Suffolk	1	29	3.4	3.0	4.2		
9 Cleveland	1	35	2.9	2.9	2.9		
10= Devon	1	41	2.4	2.7	2.7		
10= Leicestershire	1	41	2.4	2.7	2.0		
12 North Yorkshire	1	43	2.3	0.0	0.0		
UPPER QUARTILE							
13 Humberside	1	54	1.9	2.4	2.3		
14 West Midlands	2	210	1.0	1.3	0.5	WEST MIDLANDS 1.6	
15 Tyne & Wear	1	134	0.7	0.8	0.7		
16 Greater Manchester	1	155	0.6	0.7	0.8		
17= Avon	0	50	0.0	0.0	2.0		
17= Bedfordshire & Luton	0	25	0.0	3.3	2.7		
17= Buckinghamshire	0	41	0.0	0.0	0.0		
17= Cheshire	0	51	0.0	0.0	0.0		
17= Cornwall	0	25	0.0	0.0	0.0		
17= County Durham & Darlington	0	32	0.0	0.0	0.0		
17= Cumbria	0	25	0.0	0.0	0.0		
17= Dorset	0	22	0.0	0.0	0.0		
17= East Sussex	0	37	0.0	0.0	0.0		
17= Essex	0	60	0.0	0.0	0.0		
17= Gloucestershire	0	17	0.0	0.0	0.0		
17= Hampshire	0	78	0.0	0.0	0.0		
17= Hereford & Worcester	0	22	0.0	2.5	0.0	HEREFORD & WORCESTER 0.0	
17= Hertfordshire	0	50	0.0	0.0	0.0		
17= Isle Of Wight	0	5	0.0	0.0	0.0		
17= Kent	0	59	0.0	0.0	0.0		
17= Lancashire	0	61	0.0	0.0	0.0		
17= Merseyside	0	82	0.0	0.0	0.0		
17= Norfolk	0	22	0.0	0.0	0.0		
17= Northumberland	0	23	0.0	0.0	0.0		
17= Oxfordshire	0	20	0.0	0.0	0.0		
17= Shropshire	0	22	0.0	4.8	4.8		
17= Somerset	0	12	0.0	0.0	0.0		
17= Staffordshire	0	35	0.0	0.0	0.0	STAFFORDSHIRE 0	
17= Surrey	0	43	0.0	2.4	2.1		
17= West Sussex	0	30	0.0	0.0	0.0		
17= West Yorkshire	0	171	0.0	0.0	0.0		
17= Wiltshire	0	17	0.0	0.0	0.0		
45= Nottinghamshire	N/Av	N/Av	N/Av	0.0	0.0		
45= South Yorkshire ⁽¹⁾	N/Av	N/Av	N/Av	1.9	2.0		

⁽¹⁾ 2002/03 was previously published as 1.8. It has been revised in the light of an amendment received from the Fire and Rescue Service.
N/Av Not available.

Source: DCLG annual returns.

11(b)

**The percentage of top 5% earners from ethnic minority communities
(Reporting period April 05 - June 06)**



Monthly Stats (percentage)

	Apr	May	June	July	Aug	Sept	Oct	Nov	Dec	Jan	Feb	Mar
2006	7.14%	7.14%	7.14%									
2005	0%	0%	0%	0%	0%	0%	0%	0%	0%	5.55%	5.55%	5.55%
2004	4.76%	4.76%	5.00%	5.00%	5.00%	5.00%	5.00%	5.00%	5.00%	5.00%	5.00%	5.00%

Monthly Stats (people)

	Apr	May	June	July	Aug	Sept	Oct	Nov	Dec	Jan	Feb	Mar
2006	1	1	1									
2005	0	0	0	0	0	0	0	0	0	1	1	1
2004	1	1	1	1	1	1	1	1	1	1	1	1

Analysis

Yearly target	Will Authority achieve target? (Estimate using predictive trend)	Have current yearly results (including predictive trend) improved since last year?
7.14%	√	√

Commentary

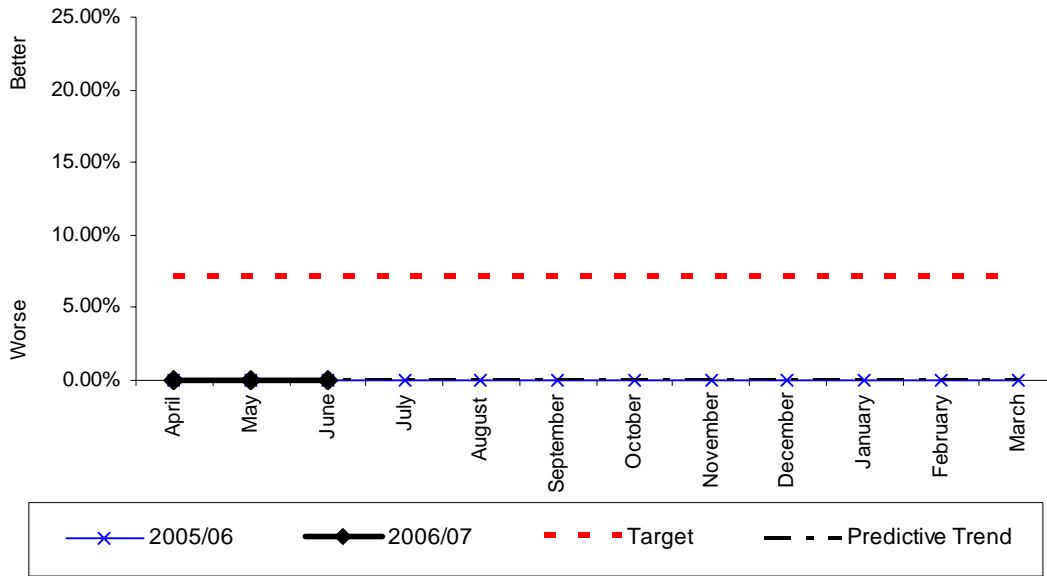
The Authority has 14 staff within the top 5% earnings band of which there is 1 classified as from an ethnic minority community. Percentage improvement is due to re-basing the data on current staffing levels.

BV 11c - The top 5% of earners that have a disability

	Percentage of those with a disability <u>2004/05</u>	REGIONAL ESTIMATED SUBMISSION 2005/06	SHROPSHIRE ESTIMATED 2006/07 based on Q1
1 West Midlands	0.5	WEST MIDLANDS 0.5	
2 Hereford & Worcester	0.0	HEREFORD & WORCESTER 0.0	
3 Shropshire	0.0	SHROPSHIRE 0.0	0
4 Staffordshire	0.0	STAFFORDSHIRE 0.0	
5 Warwickshire	n/a	WARWICKSHIRE 0.0	

11(c)

**The percentage of top 5% earners that are disabled
(Reporting period April 05 - June 06)**



Monthly Stats (percentage)

	Apr	May	June	July	Aug	Sept	Oct	Nov	Dec	Jan	Feb	Mar
2006	0%	0%	0%									
2005	0%	0%	0%	0%	0%	0%	0%	0%	0%	0%	0%	0%
2004	No previous data as this is a new BVPI											

Monthly Stats (people)

	Apr	May	June	July	Aug	Sept	Oct	Nov	Dec	Jan	Feb	Mar
2006	0	0	0									
2005	0	0	0	0	0	0	0	0	0	0	0	0
2004	No previous data as this is a new BVPI											

Analysis

Yearly target	Will Authority achieve target? (Estimate using predictive trend)	Have current yearly results (including predictive trend) improved since last year?
7.14%	Not yet quantified	=

Commentary

The Authority has 18 staff within the top 5% earnings band of which there are currently none classed as disabled. The proposed cultural audit could improve this achievement by identification of the number of staff classed as disabled.

BV 12(i) - shifts lost due to sickness absence by wholetime uniformed staff⁽¹⁾

	Average strength	Shifts lost ⁽²⁾	Shifts lost per person				REGIONAL ESTIMATED SUBMISSION	SHROPSHIRE ESTIMATED
			2004/05	2003/04	2002/03	2001/02	2000/01	2005/06
1 Isle Of Wight	73	375	5.1	9.7	9.7	11.1	11.8	
2 Oxfordshire	263	1,475	5.6	6.0	9.3	9.4	9.5	
3 Cornwall	219	1,471	6.7	7.5	9.0	9.8	14.6	
4 North Yorkshire	384	2,596	6.8	11.2	14.1	10.3	10.6	
5 Suffolk	273	1,889	6.9	7.2	13.2	8.8	9.4	
6 Cumbria	291	2,016	6.9	9.1	8.2	7.7	11.8	
7 West Yorkshire	1,683	12,304	7.3	7.5	8.8	7.7	6.9	
8 Lancashire	1,017	7,440	7.3	6.2	6.9	5.6	4.5	
9 Warwickshire	297	2,254	7.6	8.3	11.0	11.1	9.7	
10 West Sussex	431	3,340	7.7	9.0	N/Av	9.6	N/Av	
11 Greater Manchester	2,131	16,614	7.8	10.5	10.9	10.6	12.4	
12 Leicestershire	502	4,002	8.0	9.3	10.2	9.6	10.2	
UPPER QUARTILE								
13 Cheshire	634	5,121	8.1	10.5	9.6	8.8	10.6	
14 Wiltshire	247	2,055	8.3	8.3	8.4	8.5	7.9	
15 Humberside	748	6,233	8.3	8.8	8.5	11.9	9.9	
16 Kent	956	8,103	8.5	10.2	10.4	11.1	9.7	
17 Buckinghamshire	371	3,230	8.7	6.6	7.1	8.9	9.8	
18 Hertfordshire	587	5,239	8.9	8.5	9.5	8.6	7.8	
19 Hampshire	837	7,740	9.2	8.5	10.5	10.6	8.2	
20 East Sussex	470	4,470	9.5	11.9	7.7	7.6	8.2	
21 Hereford & Worcester	354	3,371	9.5	8.5	11.0	8.9	9.4	
22 County Durham & Darlington	421	4,088	9.7	9.9	10.8	9.2	11.3	
23 Tyne & Wear	996	9,753	9.8	10.9	10.5	11.7	12.1	
24 West Midlands	2,019	19,851	9.8	10.6	10.4	8.7	8.6	
25 Royal Berkshire	459	4,532	9.9	10.7	8.0	11.3	12.2	
26 Northumberland	216	2,167	10.0	8.6	10.3	7.0	7.3	
27 Merseyside	1,340	13,566	10.1	10.9	10.6	11.2	9.1	
28 Cleveland	591	6,273	10.6	9.0	11.0	9.5	7.9	
29 Surrey	699	7,529	10.8	8.9	11.3	9.2	9.7	
30 Somerset	201	2,166	10.8	10.2	7.1	7.4	7.3	
31 Gloucestershire	253	2,738	10.8	11.0	12.8	8.9	12.2	
32 Devon	590	6,433	10.9	10.0	10.1	10.5	8.9	
33 Derbyshire	508	5,540	10.9	10.2	12.6	10.5	10.3	
34 Norfolk	315	3,453	11.0	10.5	10.6	9.3	10.8	
35 South Yorkshire	936	10,363	11.1	9.6	8.8	8.8	10.7	
36 Essex	972	11,272	11.6	11.3	14.5	13.4	13.1	
37 London	6,062	72,996	12.0	13.5	13.6	12.2	12.1	
38 Shropshire	229	2,798	12.2	10.7	7.9	7.5	10.4	
39 Dorset	329	4,100	12.5	11.6	9.3	7.9	10.0	
40 Nottinghamshire	591	7,552	12.8	N/Av	12.7	10.8	9.9	
41 Staffordshire	491	6,632	13.5	10.5	N/Av	9.5	N/Av	
42 Northamptonshire	329	4,457	13.5	8.7	12.9	N/Av	10.4	
43 Lincolnshire	214	3,001	14.0	10.9	10.8	8.3	7.1	
44 Avon	706	11,303	16.0	18.0	17.2	13.3	10.3	
45= Bedfordshire & Luton	351	N/Pr	N/Av	14.9	15.9	13.6	11.8	
45= Cambridgeshire	309	N/Pr	N/Av	10.4	9.8	9.1	12.0	

⁽¹⁾ Includes wholetime and control.

⁽²⁾ The 'shifts lost' figures are rounded.

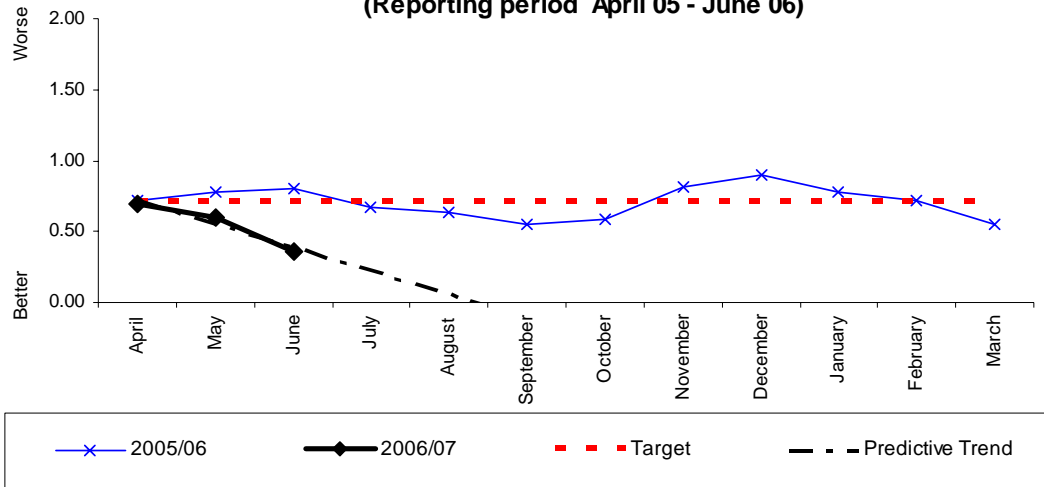
N/Pr Not provided.

N/Av Not available.

Source: DCLG annual returns.

12(i)

**The proportion of working days/shifts lost due to sickness absence by
wholetime uniformed staff
(Reporting period April 05 - June 06)**



Monthly Stats (days)

	Apr	May	June	July	Aug	Sept	Oct	Nov	Dec	Jan	Feb	Mar	YTD
2006	0.69	0.60	0.36										1.65
2005	0.65	0.75	0.69	0.60	0.59	0.54	0.56	0.79	0.89	0.78	0.72	0.55	8.49
2004	0.54	0.65	0.97	0.85	0.67	0.67	0.88	0.91	0.93	0.93	0.53	0.57	9.09

Monthly Stats (actual)

	Apr	May	June	July	Aug	Sept	Oct	Nov	Dec	Jan	Feb	Mar	YTD
2006	161	139	84										384
2005	149	172	159	136	135	122	127	180	203	177	164	125	1939
2004	114	136	204	179	139	142	186	193	197	197	112	121	1920

Analysis

Yearly target	Will Authority achieve target? (Estimate using predictive trend)	Have current yearly results (including predictive trend) improved since last year?
8.5	√	√

Commentary

BV 12(ii) - working days/shifts lost due to sickness absence by all staff⁽¹⁾

	Average strength	Shifts lost ⁽²⁾	Shifts lost per person					REGIONAL ESTIMATED SUBMISSION	SHROPSHIRE ESTIMATED
			2004/05	2003/04	2002/03	2001/02	2000/01	2005/06	2006/07 based on Q1
			2004/05	2004/05	2004/05	2003/04	2002/03	2001/02	2000/01
1 North Yorkshire	470	3,369	7.2	11.1	13.6	11.6	10.9		
2 West Yorkshire	1,901	14,942	7.9	7.9	9.4	8.0	7.5	7.8	
3 Cheshire	765	6,221	8.1	10.6	9.8	8.9	10.6		
4 Lancashire	1,184	9,647	8.1	6.8	7.5	6.0	6.0		
5 Leicestershire	612	5,067	8.3	9.4	10.6	9.4	N/Av		
6 Kent	1,153	9,552	8.3	9.9	9.8	11.3	N/Av		
7 Greater Manchester	2,495	21,627	8.7	10.9	11.3	10.7	12.6	HEREFORD & WORCESTER 8.46	
8 Wiltshire	320	2,853	8.9	9.6	9.2	9.6	8.4	SHROPSHIRE 8.9	
UPPER QUARTILE									
9 Humberside	869	7,838	9.0	9.5	8.9	12.5	10.2		
10 Hereford & Worcester	446	4,087	9.2	9.1	11.0	10.1	9.7		
11 East Sussex	582	5,459	9.4	11.7	7.7	7.9	8.3		
12 County Durham & Darlington	492	4,764	9.7	9.4	10.3	8.8	11.8		
13 West Midlands	2,408	23,388	9.7	10.9	10.6	9.0	8.3		
14 Devon	726	7,265	10.0	9.5	9.2	9.7	8.6		
15 Hampshire	1,055	10,667	10.1	9.7	10.3	10.4	8.2		
16 Buckinghamshire	442	4,512	10.2	7.7	8.5	11.1	10.5		
17 Tyne & Wear	1,224	12,561	10.3	10.8	11.5	12.7	13.1		
18 Cleveland	678	7,135	10.5	8.8	11.1	9.9	8.3		
19 Derbyshire	603	6,555	10.9	11.2	13.6	10.2	10.9		
20 Shropshire	279	3,041	10.9	10.7	7.4	7.5	10.4		
21 Merseyside	1,633	18,029	11.0	11.9	11.0	11.3	10.1	WEST MIDLANDS 10.9	
22 Royal Berkshire	558	6,165	11.0	11.6	9.2	11.3	11.5		
23 South Yorkshire	1,094	12,183	11.1	9.6	9.1	9.2	11.0		
24 Essex	1,159	13,742	11.9	N/Av	14.6	13.7	13.4		
25 London	6,945	82,906	11.9	13.2	13.8	12.3	12.3		
26 Dorset	434	5,305	12.2	11.8	10.4	9.2	10.5		
27 Nottinghamshire	728	9,417	12.9	N/Av	13.2	11.9	N/Av	STAFFORDSHIRE 12.9	
28 Staffordshire	644	9,282	14.4	12.5	N/Av	N/Av	N/Av		
29 Avon	810	13,682	16.9	18.1	17.0	13.2	10.4		
30= Bedfordshire & Luton	453	N/Pr	N/Av	13.2	14.3	12.5	10.8		
30= Cambridgeshire	421	N/Pr	N/Av	10.5	10.8	8.9	11.5	WARWICKSHIRE n/app	

⁽¹⁾ Excludes county fire authorities, which are included in the Indicator published by county councils.

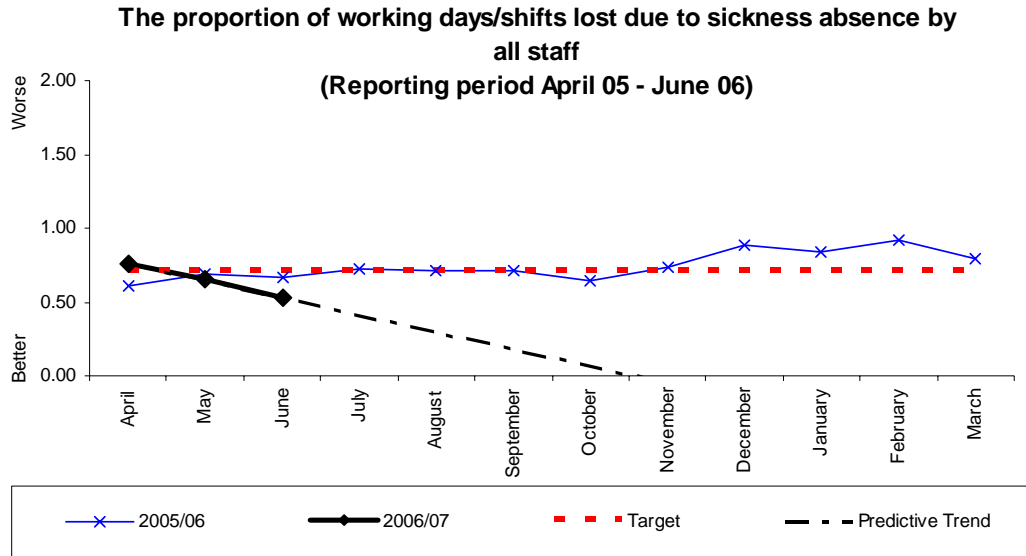
⁽²⁾ The 'shifts lost' figures are rounded.

N/Pr Not provided.

N/Av Not available.

Source: DCLG annual returns.

12(ii)



Monthly Stats (days)

	Apr	May	June	July	Aug	Sept	Oct	Nov	Dec	Jan	Feb	Mar	YTD
2006	0.76	0.66	0.53										1.94
2005	0.57	0.67	0.57	0.67	0.67	0.70	0.62	0.72	0.88	0.84	0.92	0.80	8.93
2004	0.68	0.59	0.81	0.86	0.60	0.60	0.79	0.80	0.90	0.80	0.51	0.50	8.42

Monthly Stats (actual)

	Apr	May	June	July	Aug	Sept	Oct	Nov	Dec	Jan	Feb	Mar	YTD
2006	221	191	153										565
2005	157	189	166	189	190	199	176	203	250	237	259	225	2530
2004	190	165	225	239	168	169	223	227	255	226	144	141	2372

Analysis

Yearly target	Will Authority achieve target? (Estimate using predictive trend)	Have current yearly results (including predictive trend) improved since last year?
8.5	√	√

Commentary

BV 15(i) - percentage of wholetime firefighters retiring on grounds of ill health as a percentage of the total workforce

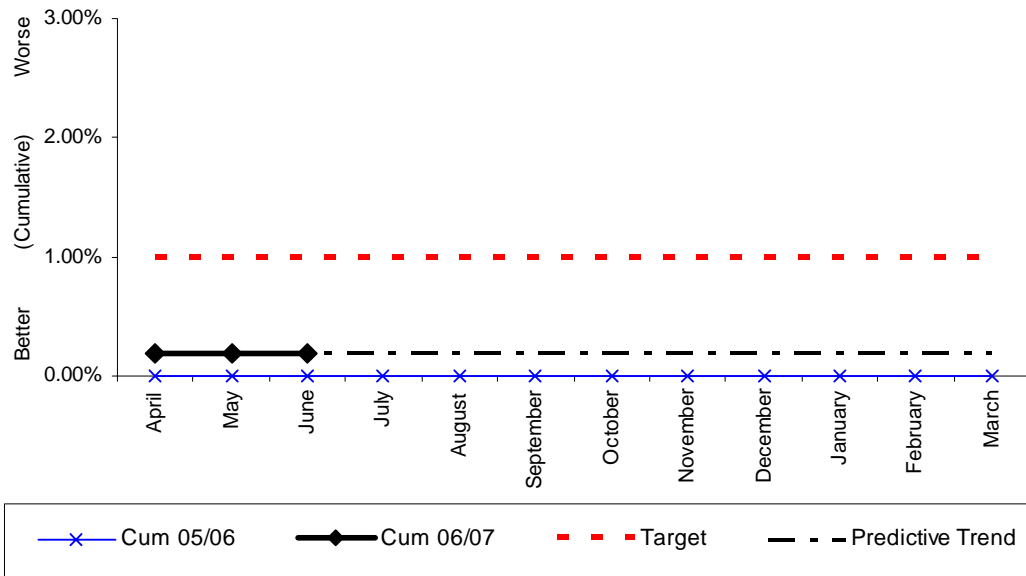
	Average strength	Ill health retirements	Percentage of ill health retirements					REGIONAL ESTIMATED SUBMISSION 2005/06	SHROPSHIRE ESTIMATED 2006/07 based on Q1
			2004/05	2003/04	2002/03	2001/02	2000/01		
1= Northumberland	196	0	0.0	1.0	0.0	1.0	2.0		
1= Somerset	182	0	0.0	2.2	1.7	0.6	1.1	SHROPSHIRE 0	
1= Warwickshire ⁽¹⁾	280	0	0.0	4.3	3.9	2.1	2.4		
4= Devon	569	1	0.2	0.5	2.0	1.5	0.2		
4= Hertfordshire	569	1	0.2	0.9	0.4	0.9	1.1		
6 Lancashire	974	2	0.2	0.5	0.9	1.4	0.9		
7 Royal Berkshire	426	1	0.2	1.4	1.0	0.2	1.2		
8 Hereford & Worcester	333	1	0.3	0.9	1.7	1.7	1.1		
9 Cheshire	609	2	0.3	0.8	0.6	1.6	1.0		
10 Cumbria	273	1	0.4	1.8	1.1	1.8	1.8		
11 Cornwall	203	1	0.5	1.0	1.1	2.2	1.6	0.4	
12 Nottinghamshire	568	3	0.5	1.2	1.0	2.2	1.4		
UPPER QUARTILE									
13 Humberside	719	4	0.6	0.6	1.1	1.1	2.0		
14 Tyne & Wear	958	6	0.6	1.3	2.5	3.2	3.8		
15 Derbyshire	477	3	0.6	1.5	1.5	2.5	2.3		
16 East Sussex	444	3	0.7	0.9	2.4	0.7	2.9		
17 Greater Manchester	2,064	14	0.7	1.3	1.1	1.5	2.2		
18 Norfolk	288	2	0.7	1.4	1.7	1.6	2.9		
19 Cleveland	567	4	0.7	1.0	2.8	2.1	1.5		
20 Hampshire	799	6	0.8	0.4	0.8	2.1	1.6		
21 Suffolk	251	2	0.8	2.0	2.0	2.0	1.6		
22 Oxfordshire	241	2	0.8	0.4	1.7	1.3	3.1		
23 Gloucestershire	239	2	0.8	0.8	0.4	0.4	1.3		
24 Leicestershire	477	4	0.8	0.4	1.7	1.2	0.6		
25 London	5,903	52	0.9	2.1	2.9	2.3	2.5		
26 Wiltshire	224	2	0.9	0.4	0.0	1.8	2.3		
27 Surrey	671	6	0.9	1.2	1.0	2.4	1.1		
28 Bedfordshire & Luton	327	3	0.9	1.8	1.8	2.7	1.3		
29 West Yorkshire	1,630	15	0.9	1.0	1.6	1.5	0.8	WARWICKSHIRE 1.0	
30 Kent	917	10	1.1	1.7	1.8	1.5	1.4	WEST MIDLANDS 1.1	
31 West Midlands	1,956	23	1.2	3.0	1.9	1.8	2.1	HEREFORD & WORCESTER 1.2	
32 Buckinghamshire	351	5	1.4	2.1	1.9	2.7	2.7		
33 Lincolnshire	191	3	1.6	2.6	1.6	0.5	3.6		
34 Northamptonshire	307	5	1.6	2.3	1.0	2.0	2.0		
35 Dorset	306	5	1.6	1.0	1.3	1.7	1.4		
36 Isle Of Wight	61	1	1.6	1.7	1.7	3.3	0.0		
37 West Sussex	402	7	1.7	1.0	1.5	1.0	N/Av		
38 County Durham & Darlington	394	7	1.8	1.0	1.2	1.2	2.0		
39 Merseyside	1,298	25	1.9	0.8	1.3	0.5	0.4		
40 South Yorkshire	898	18	2.0	1.9	1.3	2.5	2.0		
41 Cambridgeshire	279	6	2.2	0.7	1.5	3.3	2.2		
42 North Yorkshire	361	8	2.2	4.8	3.1	2.8	1.7		
43 Shropshire	212	5	2.4	0.5	1.9	1.5	1.5		
44 Avon	674	16	2.4	2.1	1.6	2.3	1.8		
45 Essex	928	23	2.5	1.9	1.9	1.7	1.1		
46 Staffordshire	459	13	2.8	1.1	0.8	1.3	1.5	STAFFORDSHIRE 2.5	

⁽¹⁾ 2002/03 was previously published as 3.2. It has been revised in the light of an amendment received from the Fire and Rescue Service N/Av Not available.

Source: DCLG annual returns.

15(i)

**Wholetime fire-fighter ill-health retirements as a percentage of
the total workforce
(Reporting period April 05 - June 06)**



Monthly Stats (percentage)

	Apr	May	June	July	Aug	Sept	Oct	Nov	Dec	Jan	Feb	Mar	YTD
2006	0.43%	0.0%	0.0%										0.43%
2005	0%	0%	0%	0%	0%	0%	0%	0%	0%	0%	0%	0%	0%
2004	0%	0%	0%	0.48%	0%	0%	0%	0.47%	0.47%	0.47%	0.47%	0%	2.36%

Monthly Stats (people)

	Apr	May	June	July	Aug	Sept	Oct	Nov	Dec	Jan	Feb	Mar	YTD
2006	1	0	0										1
2005	0	0	0	0	0	0	0	0	0	0	0	0	0
2004	0	0	0	1	0	0	0	1	1	1	1	0	4

Analysis

Yearly target	Will Authority achieve target? (Estimate using predictive trend)	Have current yearly results (including predictive trend) improved since last year?
1.0%	√	X

Commentary

BV 15(ii) - percentage of control and non-uniformed staff retiring on grounds of ill health as a percentage of the total workforce

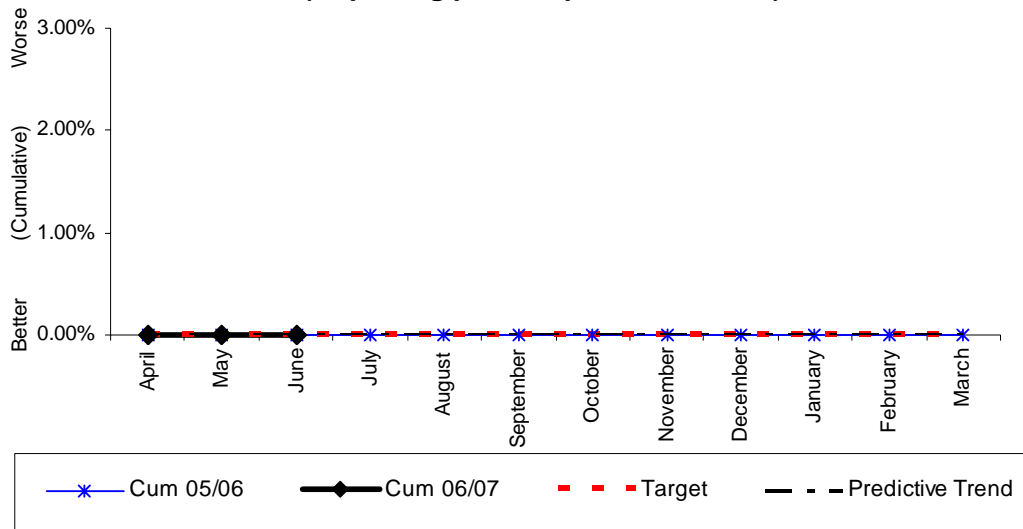
	Average strength	Ill health retirements	Percentage of ill health retirements					REGIONAL ESTIMATED SUBMISSION	SHROPSHIRE ESTIMATED
			2004/05	2003/04	2002/03	2001/02	2000/01		
1= Bedfordshire & Luton	128	0	0.0	0.9	1.0	0.9	0.0		
1= Buckinghamshire	103	0	0.0	0.0	3.3	2.2	1.2		
1= Cleveland	126	0	0.0	0.0	0.0	0.9	0.0		
1= Cornwall	108	0	0.0	1.0	0.0	0.0	1.2		
1= County Durham & Darlington	107	0	0.0	0.0	1.1	0.0	1.1		
1= Cumbria	96	0	0.0	0.0	0.0	2.3	1.3		
1= Devon	176	0	0.0	0.0	0.0	0.7	0.0		
1= Dorset	144	0	0.0	0.8	0.0	0.9	0.0		
1= Gloucestershire	97	0	0.0	0.0	0.0	0.0	1.3		
1= Hampshire	340	0	0.0	0.3	0.6	0.0	0.0		
1= Hertfordshire	163	0	0.0	0.0	0.0	0.0	0.0	HEREFORD & WORCESTER 0.0	
1= Leicestershire	147	0	0.0	0.0	0.9	1.0	0.0		
1= Norfolk	123	0	0.0	0.9	0.9	0.0	0.0		
1= North Yorkshire	129	0	0.0	0.8	0.9	1.0	1.1		
1= Northamptonshire	98	0	0.0	1.1	0.0	0.0	0.0		
1= Oxfordshire	86	0	0.0	0.0	0.0	0.0	0.0		
1= Royal Berkshire	147	0	0.0	0.0	0.0	0.0	0.0		
1= Shropshire	75	0	0.0	0.0	1.4	0.0	0.0	SHROPSHIRE 0.0	
1= Somerset	120	0	0.0	0.8	0.0	1.9	1.2		
1= Warwickshire	107	0	0.0	0.0	1.0	1.0	1.3	WARWICKSHIRE 0.0	
1= West Sussex	153	0	0.0	0.0	0.8	0.8	N/Av	WEST MIDLANDS 0.0	
1= West Yorkshire	299	0	0.0	0.0	0.7	0.7	1.6		
UPPER QUARTILE									
23 Kent	270	1	0.4	0.7	0.0	1.5	0.5		
24 Greater Manchester	530	2	0.4	1.0	1.4	1.3	1.3		
25 London	1,056	4	0.4	0.3	1.3	1.4	1.7		
26 Lancashire	245	1	0.4	0.4	0.0	1.4	3.4		
27 Staffordshire	206	1	0.5	0.5	0.0	2.3	0.7		
28= Suffolk	195	1	0.5	1.1	0.0	0.0	1.0		
28= West Midlands	585	3	0.5	1.4	0.5	0.6	0.8		
30 Nottinghamshire	166	1	0.6	1.3	0.7	0.0	0.0		
31 East Sussex	159	1	0.6	1.3	0.0	0.8	1.6		
32 Cambridgeshire	155	1	0.6	0.0	0.0	0.7	0.0		
33 Surrey	140	1	0.7	0.0	0.0	2.1	0.0		
34 Hereford & Worcester	127	1	0.8	0.8	0.0	1.9	1.0		
35 Merseyside	374	3	0.8	0.6	0.3	0.6	0.7		
36 Wiltshire	111	1	0.9	0.0	0.0	1.0	0.0		
37 South Yorkshire	205	2	1.0	1.0	0.0	0.5	1.7		
38 Lincolnshire	94	1	1.1	0.0	1.4	4.3	1.6		
39 Essex	263	3	1.1	0.4	0.4	0.9	2.0		
40 Humberside	172	2	1.2	1.2	0.6	1.9	0.0		
41 Avon	158	2	1.3	1.4	0.0	1.5	0.0		
42 Derbyshire	147	2	1.4	0.0	0.0	0.0	0.9		
43 Cheshire	181	3	1.7	0.0	0.0	0.0	0.0		
44 Northumberland	53	1	1.9	0.0	2.1	0.0	2.3	STAFFORDSHIRE 1.8	
45 Tyne & Wear	307	7	2.3	0.0	0.3	1.1	2.3		
46 Isle Of Wight	40	1	2.5	0.0	0.0	6.1	0.0		

N/Av Not available.

Source: DCLG annual returns.

15(ii)

**Control and non-uniformed ill-health retirements as a percentage of the total workforce
(Reporting period April 05 - June 06)**



Monthly Stats (percentage)

	Apr	May	June	July	Aug	Sept	Oct	Nov	Dec	Jan	Feb	Mar	YTD
2006	0%	0%	0%										0%
2005	0%	0%	0%	0%	0%	0%	0%	0%	0%	0%	0%	0%	0%
2004	0%	0%	0%	0%	0%	0%	0%	0%	0%	0%	0%	0%	0%

Monthly Stats (people)

	Apr	May	June	July	Aug	Sept	Oct	Nov	Dec	Jan	Feb	Mar	YTD
2006	0	0	0										0
2005	0	0	0	0	0	0	0	0	0	0	0	0	0
2004	0	0	0	0	0	0	0	0	0	0	0	0	0

Analysis

Yearly target	Will Authority achieve target? (Estimate using predictive trend)	Have current yearly results (including predictive trend) improved since last year?
0%	√	=

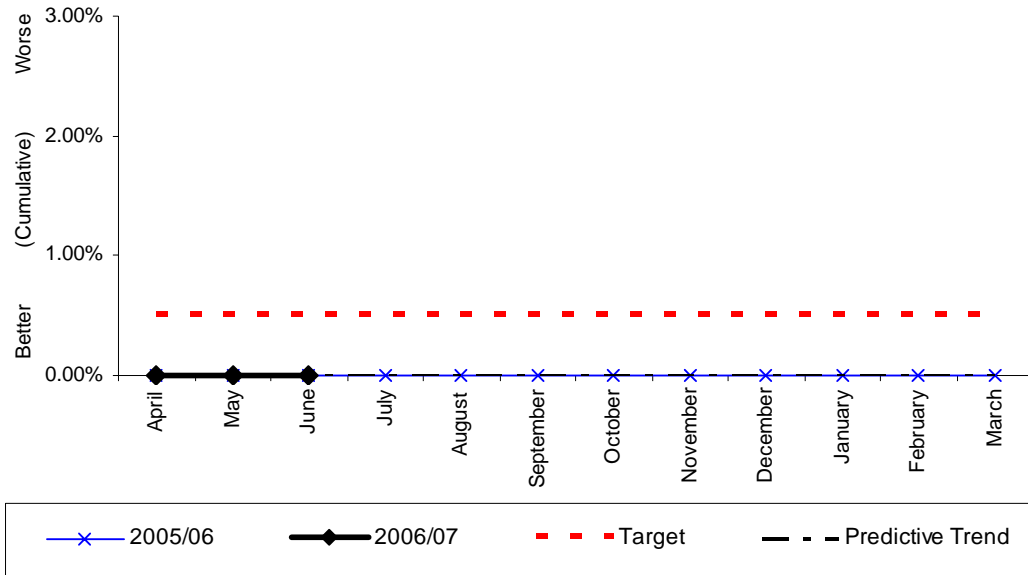
Commentary

BV 16a(i) - The percentage of wholetime uniformed and retained duty system employees with a disability

	Percentage of those with a disability <u>2004/05</u>	REGIONAL ESTIMATED SUBMISSION 2005/06	SHROPSHIRE ESTIMATED 2006/07 based on Q1
1 West Midlands	0.20	WARWICKSHIRE 0.3	
2 Hereford & Worcester	n/a	WEST MIDLANDS 0.3	
3 Shropshire	n/a	HEREFORD & WORCESTER 0.1	
4 Staffordshire	n/a	SHROPSHIRE 0.0	0.0
5 Warwickshire	n/a	STAFFORDSHIRE 0.0	

16a(i)

**The percentage of wholetime and retained duty system employees with a disability
(Reporting period April 05 - June 06)**



Monthly Stats (percentage)

	Apr	May	June	July	Aug	Sept	Oct	Nov	Dec	Jan	Feb	Mar
2006	0%	0%	0%									
2005	0%	0%	0%	0%	0%	0%	0%	0%	0%	0%	0%	0%
2004	No previous data as this is a new BVPI											

Monthly Stats (people)

	Apr	May	June	July	Aug	Sept	Oct	Nov	Dec	Jan	Feb	Mar
2006	0	0	0									
2005	0	0	0	0	0	0	0	0	0	0	0	0
2004	No previous data as this is a new BVPI											

Analysis

Yearly target	Will Authority achieve target? (Estimate using predictive trend)	Have current yearly results (including predictive trend) improved since last year?
0.5%	Not yet quantified	=

Commentary

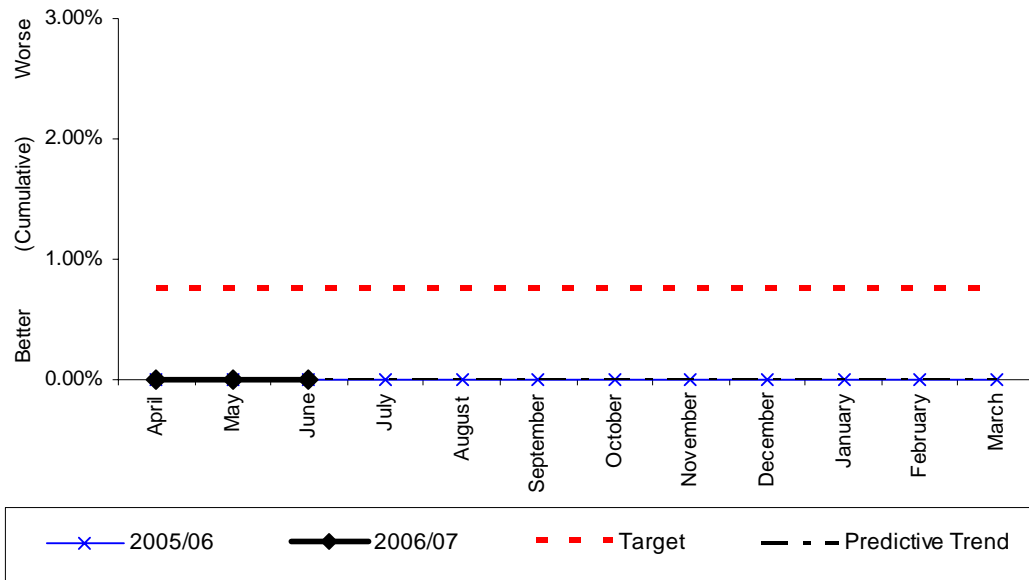
The proposed cultural audit would enable us to measure this indicator more accurately as there has been no previous requirement to divulge disability. It would enable the identification of the number of staff classed as disabled.

BV 16a(ii) - The percentage of control and non-uniformed employees with a disability

	Percentage of those with a disability <u>2004/05</u>	REGIONAL ESTIMATED SUBMISSION <u>2005/06</u>	SHROPSHIRE ESTIMATED 2006/07 based on Q1
1 West Midlands	0.17	WEST MIDLANDS 0.33	
2 Hereford & Worcester	n/a	HEREFORD & WORCESTER 0.0	
3 Warwickshire	n/a	SHROPSHIRE 0.0	0
4 Staffordshire	n/a	WARWICKSHIRE N/A	
5 Shropshire	n/a	STAFFORDSHIRE N/A	

16a(ii)

**The percentage of control and non-uniformed employees with a disability
(Reporting period April 05 - June 06)**



Monthly Stats (percentage)

	Apr	May	June	July	Aug	Sept	Oct	Nov	Dec	Jan	Feb	Mar
2006	0%	0%	0%									
2005	0%	0%	0%	0%	0%	0%	0%	0%	0%	0%	0%	0%
2004	No previous data as this is a new BVPI											

Monthly Stats (people)

	Apr	May	June	July	Aug	Sept	Oct	Nov	Dec	Jan	Feb	Mar
2006	0	0	0									
2005	0	0	0	0	0	0	0	0	0	0	0	0
2004	No previous data as this is a new BVPI											

Analysis

Yearly target	Will Authority achieve target? (Estimate using predictive trend)	Have current yearly results (including predictive trend) improved since last year?
0.75%	Not yet quantified	=

Commentary

The proposed cultural audit would enable us to measure this indicator more accurately as there has been no previous requirement to divulge disability. It would enable the identification of the number of staff classed as disabled.

16b

BVPI 16b concerns the percentage of the economically active population (aged 18-64) in the authority area who have a disability.

This percentage is currently 14.39%.

(38,050 people out of 264,510 that are economically active in the Authority area have a disability).

Source: 2001 Census, [Key Statistics for Local Authorities]. Crown copyright 2004. Crown copyright material is reproduced with the permission of the Controller of HMSO.

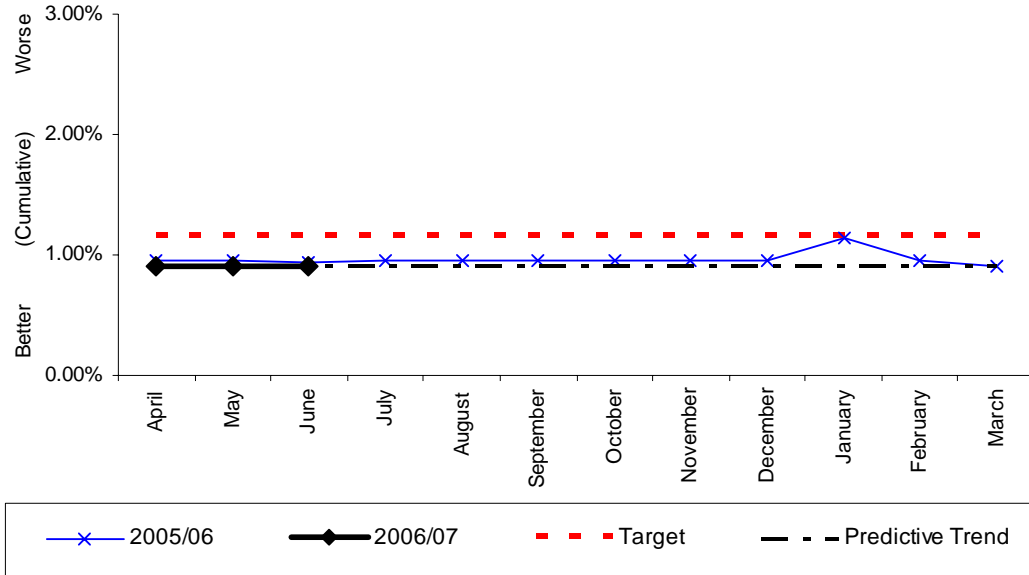
BV 17 - percentage of staff from minority ethnic communities ⁽¹⁾ compared with the percentage of the economically active minority ethnic community population ⁽²⁾ in the fire and rescue service area

	Strength		Percentage of minority ethnic staff					Percentage of minority ethnic population
	Minority Ethnic	All	2004/05	2003/04	2002/03	2001/02	2000/01	
	2004/05	2004/05						
Avon	12	924	1.3	1.3	1.1	1.0	0.8	4.8
Bedfordshire & Luton	13	499	2.6	2.6	2.5	2.6	2.3	13.9
Buckinghamshire	6	554	1.1	0.9	1.1	1.0	1.2	8.7
Cambridgeshire	10	672	1.5	1.5	1.8	1.7	1.1	6.1
Cheshire	8	824	1.0	0.7	0.6	0.5	0.5	1.8
Cleveland	6	678	0.9	0.9	0.7	0.6	0.4	3.1
Cornwall	4	636	0.6	0.5	0.5	0.5	0.5	1.1
County Durham & Darlington	3	566	0.5	0.5	0.3	0.3	0.3	1.4
Cumbria	0	761	0.0	0.0	0.0	0.0	0.0	0.8
Derbyshire	10	863	1.2	1.2	1.1	1.0	0.8	4.2
Devon	6	1,415	0.4	0.4	0.3	0.4	0.3	1.5
Dorset	4	685	0.6	0.7	0.9	0.8	0.8	2.4
East Sussex	10	702	1.4	1.0	1.1	1.0	0.7	4.3
Essex	9	1,470	0.6	0.8	0.8	0.8	0.6	3.6
Gloucestershire	13	561	2.3	2.6	2.2	1.9	1.9	3.0
Greater Manchester	33	2,134	1.5	1.6	1.5	1.0	0.8	9.2
Hampshire	3	1,538	0.2	0.2	0.1	0.1	0.1	3.8
Hereford & Worcester	5	683	0.7	0.8	0.8	1.0	0.8	2.2
Hertfordshire	11	853	1.3	1.5	1.3	1.0	0.9	6.9
Humberside	9	1,091	0.8	0.9	0.8	0.9	0.8	2.1
Isle Of Wight	0	224	0.0	0.0	0.0	0.0	0.0	1.7
Kent	9	1,709	0.5	0.6	0.7	0.5	0.5	4.0
Lancashire	10	1,408	0.7	0.7	0.7	0.7	0.6	7.0
Leicestershire	11	768	1.4	1.5	1.4	1.1	1.1	15.6
Lincolnshire	6	727	0.8	0.9	1.0	0.7	0.6	1.5
London	483	5,931	8.1	7.6	6.8	5.0	4.7	29.0
Merseyside	28	1,351	2.1	1.2	0.9	0.4	0.3	3.2
Norfolk	4	811	0.5	0.7	0.8	0.9	0.6	1.8
North Yorkshire	4	764	0.5	0.3	0.1	0.3	0.3	1.6
Northamptonshire	6	562	1.1	1.4	1.3	2.8	0.9	5.1
Northumberland	1	405	0.2	0.2	0.0	0.0	0.0	1.0
Nottinghamshire	9	918	1.0	1.1	1.1	1.4	1.1	6.3
Oxfordshire	3	559	0.5	0.4	0.2	0.2	0.2	5.5
Royal Berkshire	11	456	2.4	1.6	1.4	1.4	1.3	11.9
Shropshire	7	521	1.3	0.8	0.8	0.6	0.0	2.8
Somerset	1	583	0.2	0.2	0.2	0.2	0.2	1.3
South Yorkshire	22	970	2.3	2.0	1.8	1.7	1.4	5.1
Staffordshire	18	903	2.0	2.1	2.0	1.3	1.3	3.2
Suffolk	6	706	0.8	0.6	0.3	0.4	0.3	3.0
Surrey	7	835	0.8	0.7	0.6	0.7	0.6	5.8
Tyne & Wear	7	1,007	0.7	0.7	0.6	0.5	0.4	3.6
Warwickshire	18	472	3.8	3.2	2.9	2.3	2.1	4.9
West Midlands	107	2,023	5.3	4.8	4.4	3.9	3.6	21.2
West Sussex	7	779	0.9	0.8	0.3	0.5	0.5	3.9
West Yorkshire	35	1,846	1.9	1.8	1.5	1.2	0.7	11.5
Wiltshire	11	582	1.9	1.4	1.3	1.0	0.9	2.7

⁽¹⁾ Includes wholetime, retained duty system and control. Source: DCLG annual returns.

⁽²⁾ Defined as persons aged 18-54. Source: aggregated from ONS Census Table S101.

**The percentage of uniformed staff from ethnic minority communities
(Reporting period April 05 - June 06)**



Monthly Stats (percentage)

	Apr	May	June	July	Aug	Sept	Oct	Nov	Dec	Jan	Feb	Mar
2006	0.9%	0.9%	0.9%									
2005	1.0%	1.0%	0.9%	1.0%	1.0%	1.0%	1.0%	1.0%	1.0%	1.1%	1.0%	0.9%
2004	No previous data as this is a new BVPI											

Monthly Stats (people)

	Apr	May	June	July	Aug	Sept	Oct	Nov	Dec	Jan	Feb	Mar
2006	5	5	5									
2005	5	5	5	5	5	5	5	5	5	6	5	5
2004	No previous data as this is a new BVPI											

Analysis

Yearly target	Will Authority achieve target? (Estimate using predictive trend)	Have current yearly results (including predictive trend) improved since last year?
1.15%	X	√

Commentary

Positive action campaigns are being carried out attempting to address under representation of ethnic minority people.

17b

BVPI 17b concerns the percentage of economically active population (aged 18-54 representing uniformed staffing age) from ethnic minority communities in the fire and rescue service area.

This percentage is currently 2.85%.

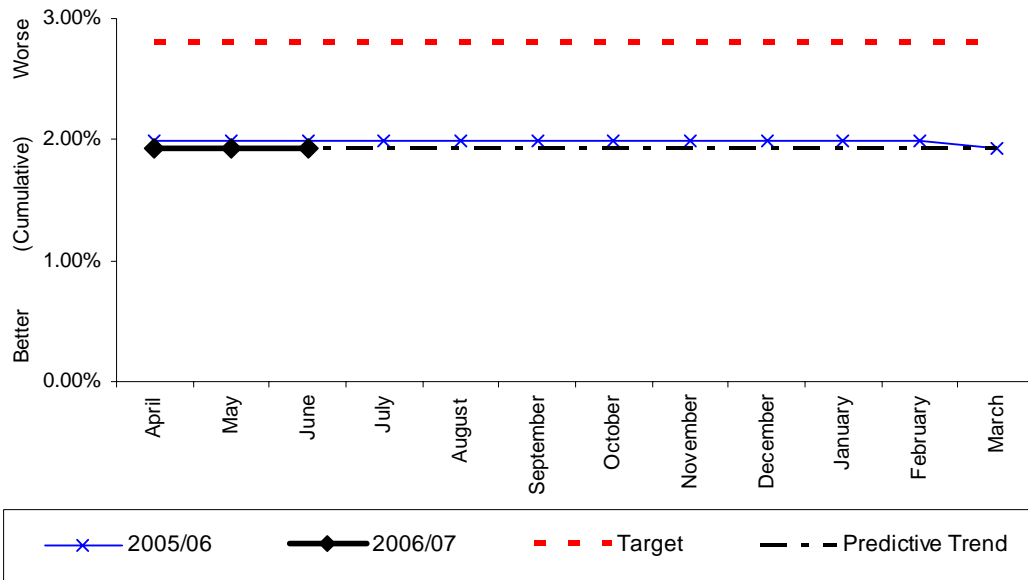
(6,209 people out of 217,905 economically active people in the Authority area are from ethnic minority communities.

Source: 2001 Census, [Key Statistics for Local Authorities]. Crown copyright 2004. Crown copyright material is reproduced with the permission of the Controller of HMSO.

BV 210 - The percentage of women firefighters

	Percentage of women firefighters			REGIONAL ESTIMATED SUBMISSION 2005/06	SHROPSHIRE ESTIMATED 2006/07 based on Q1
	2004/05	2003/04	2002/03		
1 Hereford & Worcester	3.7	n/a	n/a	HEREFORD & WORCESTER 5.02	
2 West Midlands	2.1	1.8	1.3	WARWICKSHIRE 4.9	
3 Shropshire	n/a	n/a	n/a	STAFFORDSHIRE 4.42	1.9
4 Staffordshire	n/a	n/a	n/a	WEST MIDLANDS 2.7	
5 Warwickshire	n/a	n/a	n/a	SHROPSHIRE 2.0	1.9

**The percentage of women firefighters
(Reporting period April 05 - June 06)**



Monthly Stats (percentage)

	Apr	May	June	July	Aug	Sept	Oct	Nov	Dec	Jan	Feb	Mar
2006	1.93%	1.93%	1.93%									
2005	1.99%	1.99%	1.99%	1.99%	1.99%	1.99%	1.99%	1.99%	1.99%	1.99%	1.99%	1.93%
2004	No previous data as this is a new BVPI											

Monthly Stats (people)

	Apr	May	June	July	Aug	Sept	Oct	Nov	Dec	Jan	Feb	Mar
2006	9	9	9									
2005	9	9	9	9	9	9	9	9	9	9	9	9
2004	No previous data as this is a new BVPI											

Analysis

Yearly target	Will Authority achieve target? (Estimate using predictive trend)	Have current yearly results (including predictive trend) improved since last year?
2.8%	X	X

Commentary

Percentage achieved has gone down purely due to rebasing the staffing figures against the establishment. This makes the percentage achievement appear worse, but the actual number of women firefighters is the same.
Positive action campaigns are being carried out attempting to address under representation of women.