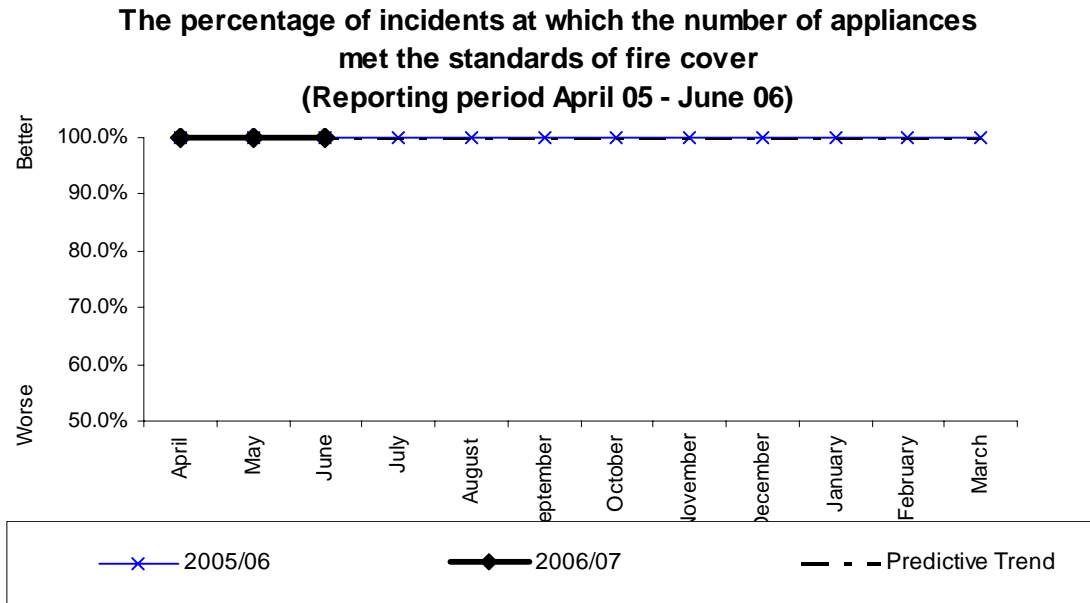


BVPIs no longer requested by the DCLG (July 2005)

145(i)



Monthly Stats (percentage)

	Apr	May	June	July	Aug	Sept	Oct	Nov	Dec	Jan	Feb	Mar
2006	100%	100%	100%									
2005	100%	100%	100%	100%	100%	100%	100%	100%	100%	100%	100%	100%
2004	100%	100%	100%	100%	100%	100%	100%	100%	100%	100%	100%	100%

Monthly Stats (actual incidents)

	Apr	May	June	July	Aug	Sept	Oct	Nov	Dec	Jan	Feb	Mar	YTD	%
2006	172	171	190										533	100
2005	173	175	207	229	196	221	202	205	184	177	184	182	2335	100%
2004	150	179	179	221	242	234	215	194	161	175	172	174	2296	100%

Analysis

Yearly target	Will Authority achieve target? (Estimate using predictive trend)	Have current yearly results (including predictive trend) improved since last year?
No target set as BVPI deleted	N/A	N/A

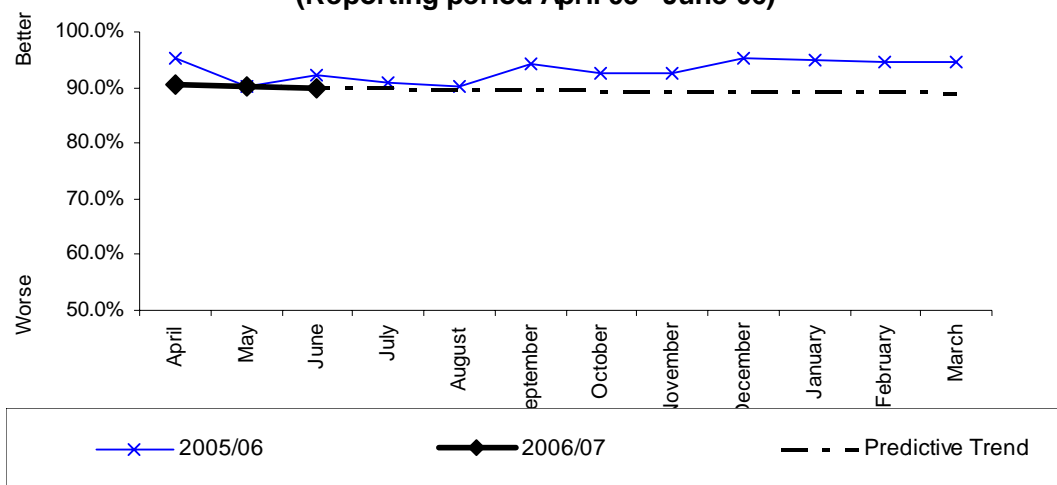
Commentary

Local standards of fire cover are to be embedded within the current reporting year.



145(ii)

**The percentage of incidents at which the number of riders met the standards of fire cover
(Reporting period April 05 - June 06)**



Monthly Stats (percentage)

	Apr	May	June	July	Aug	Sept	Oct	Nov	Dec	Jan	Feb	Mar
2006	90.70%	90.06%	90.00%									
2005	95.38%	90.29%	92.27%	90.83%	90.31%	94.12%	92.57%	92.68%	95.11%	94.92%	94.57%	94.51%
2004	90.6%	91.6%	89.9%	89.1%	92.6%	93.2%	93.1%	97.4%	92.5%	94.3%	92.4%	95.4%

Monthly Stats (actual incidents)

	Apr	May	June	July	Aug	Sept	Oct	Nov	Dec	Jan	Feb	Mar
2006	156/172	154/171	171/190									
2005	165/173	158/175	191/201	208/229	177/196	208/221	187/202	190/205	175/184	168/177	174/184	172/182
2004	136/150	164/179	161/179	196/221	224/242	218/234	201/215	188/194	149/161	165/175	159/172	166/174

	YTD	%
2005	481/533	90.2%
2004	2127/2296	92.6%

Analysis

Yearly target	Will Authority achieve target? (Estimate using predictive trend)	Have current yearly results (including predictive trend) improved since last year?
No target set as BVPI deleted	N/A	N/A

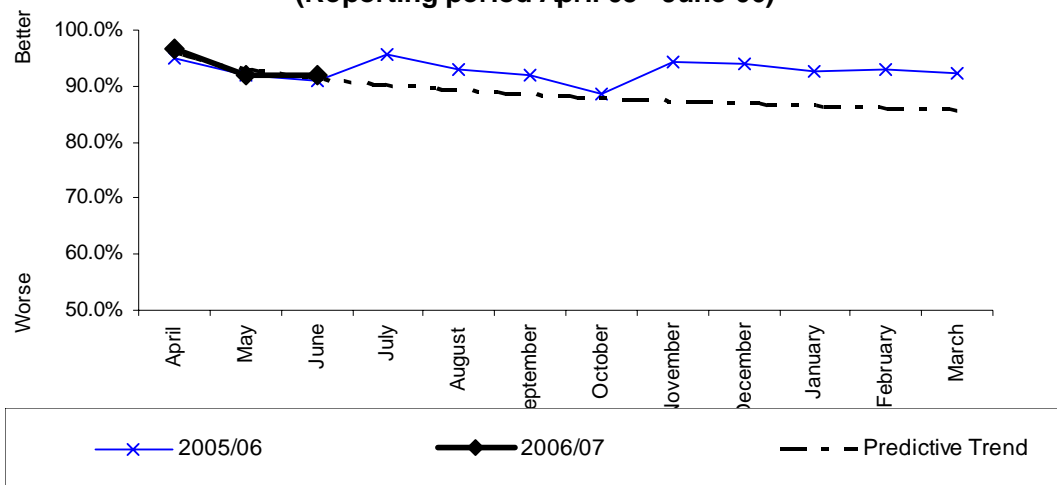
Commentary

Local standards of fire cover are to be embedded within the current reporting year.



145(iii)

**The percentage of incidents at which the attendance times met the standards of fire cover
(Reporting period April 05 - June 06)**



Monthly Stats (percentage)

	Apr	May	June	July	Aug	Sept	Oct	Nov	Dec	Jan	Feb	Mar
2006	96.51%	91.81%	92.11%									
2005	94.80%	92.00%	90.82%	95.63%	92.86%	91.86%	88.61%	94.15%	94.02%	92.66%	92.93%	92.31%
2004	96.0%	93.8%	96.5%	95.0%	94.6%	94.0%	91.2%	92.2%	91.3%	93.1%	94.8%	92.0%

Monthly Stats (actual incidents)

	Apr	May	June	July	Aug	Sept	Oct	Nov	Dec	Jan	Feb	Mar
2006	166/172	157/171	175/190									
2005	164/173	161/175	188/207	219/229	182/196	203/221	179/202	193/205	173/184	164/177	171/184	168/182
2004	143/150	168/179	173/179	210/221	229/242	220/234	197/215	178/194	147/161	163/175	163/172	160/174

	YTD	%
2005	498/533	93.43%
2004	2161/2296	94.1%

Analysis

Yearly target	Will Authority achieve target? (Estimate using predictive trend)	Have current yearly results (including predictive trend) improved since last year?
No target set as BVPI deleted	N/A	N/A

Commentary
Local standards of fire cover are to be embedded within the current reporting year.

