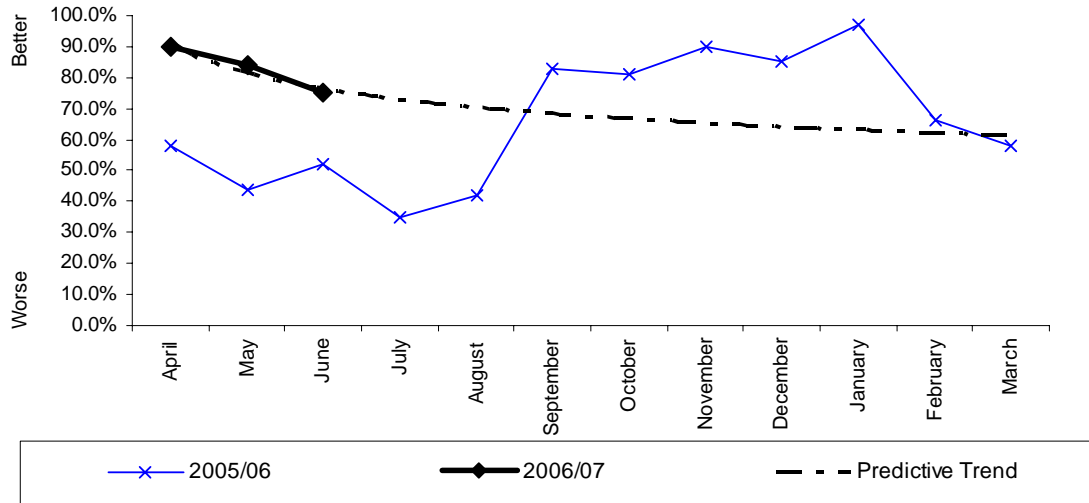


## Availability of Retained and Wholetime Firefighters in the County

**Wholetime availability on the station  
 (Reporting period April 05 - June 06)**



### Monthly Stats (percentage)

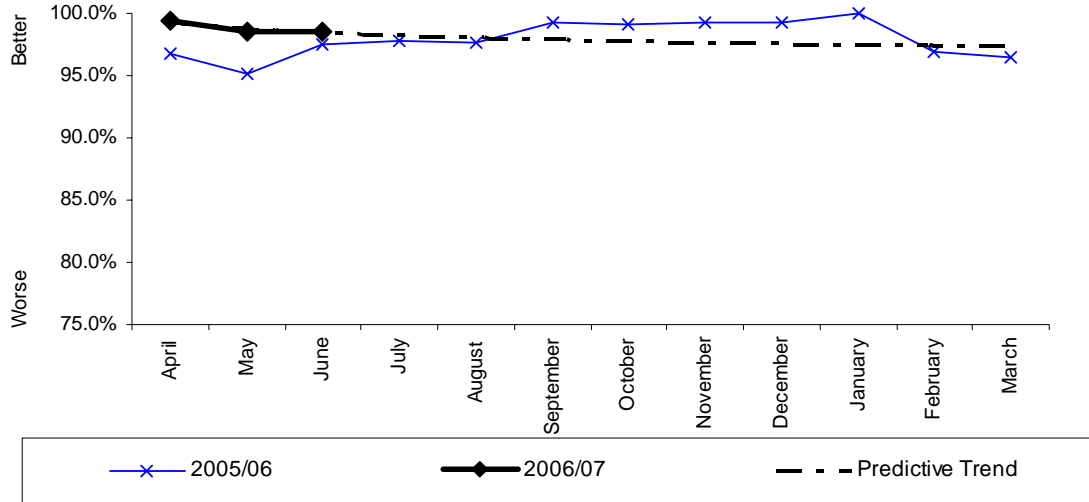
	Apr	May	June	July	Aug	Sept	Oct	Nov	Dec	Jan	Feb	Mar
<b>2006</b>	90%	84%	75%									
<b>2005</b>	58%	44%	52%	35%	42%	83%	81%	90%	85%	97%	66%	58%
<b>2004</b>	-	-	-	-	-	-	-	-	-	-	-	-

Commentary



### OPS 3 (FAPI 7)

The percentage of shifts wholetime appliances crewed  
(Reporting period April 05 - June 06)



### Monthly Stats (percentage)

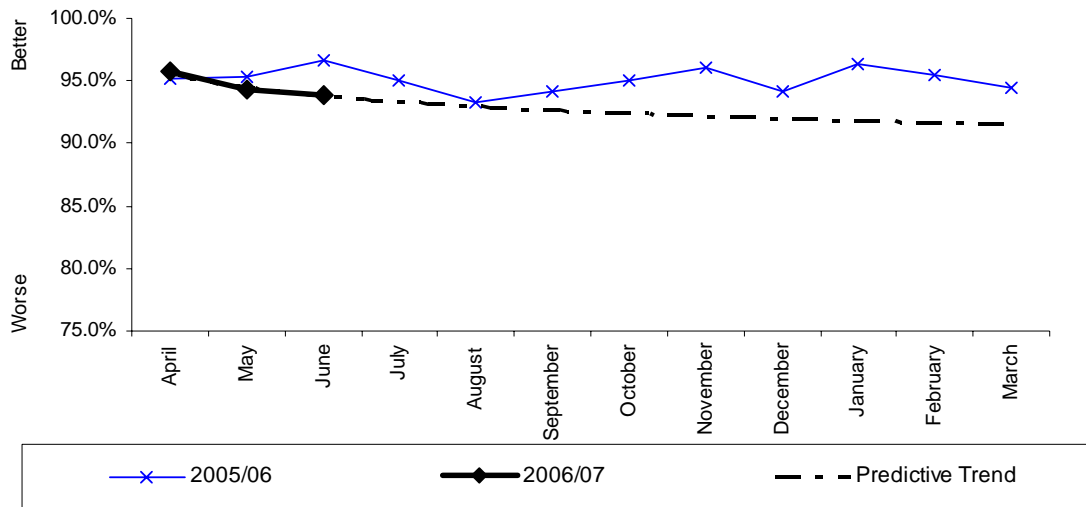
	Apr	May	June	July	Aug	Sept	Oct	Nov	Dec	Jan	Feb	Mar
<b>2006</b>	99.4%	98.5%	98.6%									
<b>2005</b>	96.7%	95.2%	97.5%	97.8%	97.6%	99.2%	99.1%	99.2%	99.3%	100.0%	96.9%	96.5%
<b>2004</b>	-	-	-	-	-	-	-	-	-	-	-	-

Commentary



### OPS 3 (FAPI 8)

The percentage of shifts retained appliances crewed  
(Reporting period April 05 - May 06)



### Monthly Stats (percentage)

	Apr	May	June	July	Aug	Sept	Oct	Nov	Dec	Jan	Feb	Mar
	95.7%	94.3%	93.9%									
<b>2005</b>	95.20%	95.30%	96.70%	95.00%	93.30%	94.10%	95.00%	96.00%	94.20%	96.40%	95.50%	94.40%
<b>2004</b>	-	-	-	-	-	-	-	-	-	-	-	-

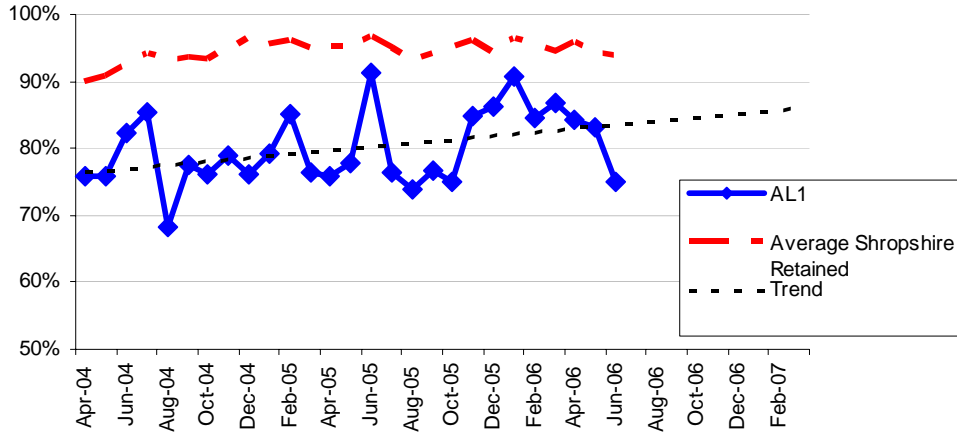
Commentary



## OPS3 Appliance Availability / Crewing

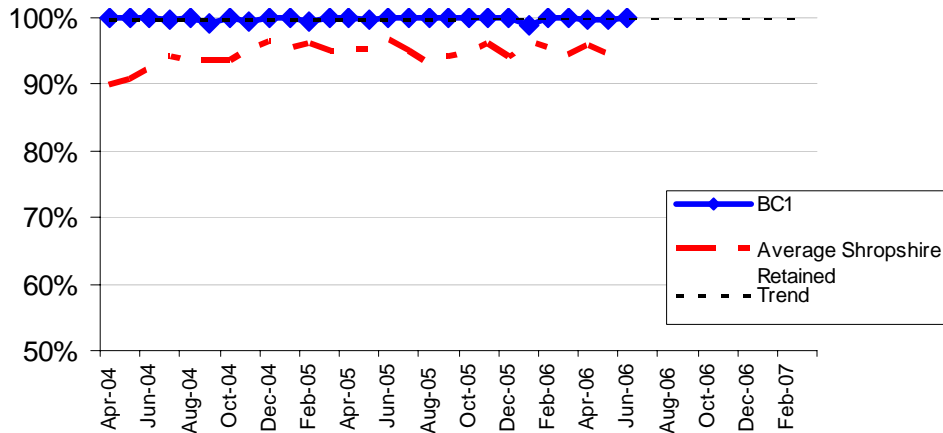
### RETAINED

#### % Shifts Retained Appliances Crewed - Albrighton



%	Apr	May	June	July	Aug	Sept	Oct	Nov	Dec	Jan	Feb	Mar	Yearly %
<b>2006</b>	84.2	83.2	75.0										80.8
<b>2005</b>	75.8	77.8	91.4	76.3	73.8	76.7	75.1	84.8	86.2	90.8	84.7	86.8	81.7
<b>2004</b>	75.9	75.9	82.2	85.4	68.3	77.5	76.2	78.9	76.1	79.1	85.2	76.3	78.1

#### % Shifts Retained Appliances Crewed - Bishops Castle

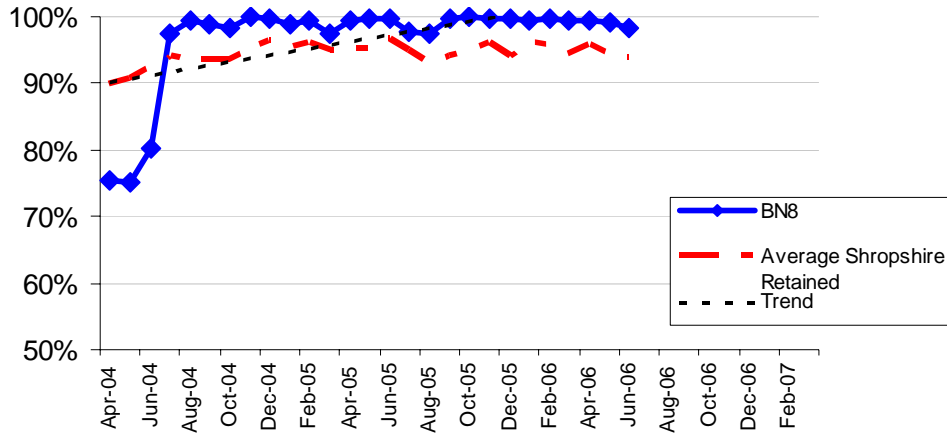


%	Apr	May	June	July	Aug	Sept	Oct	Nov	Dec	Jan	Feb	Mar	Yearly %
<b>2006</b>	99.7	99.8	100										99.8
<b>2005</b>	100	99.8	100	100	100	100	100	100	100	98.9	100	100	99.9
<b>2004</b>	100	99.9	100	99.8	100	99.2	100	99.4	100	100	99.5	99.9	99.8



## OPS3 Appliance Availability / Crewing

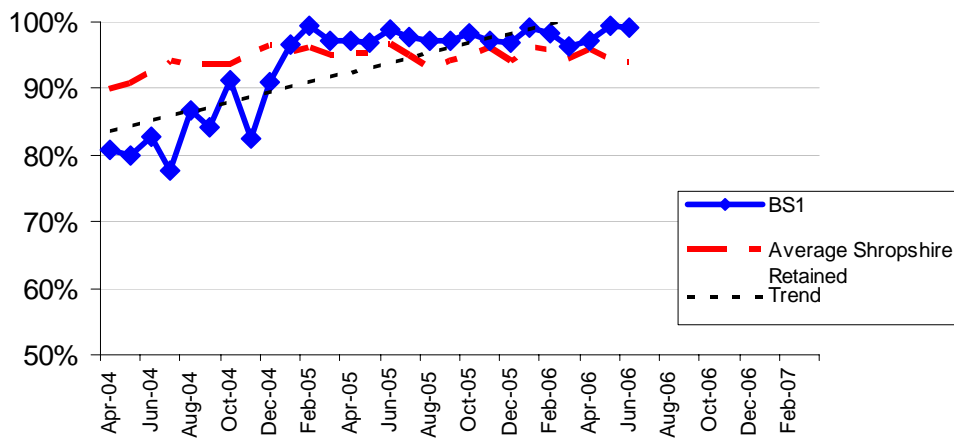
### % Shifts Retained Appliances Crewed - Bridgnorth



%	Apr	May	June	July	Aug	Sept	Oct	Nov	Dec	Jan	Feb	Mar	Yearly %
<b>2006</b>	99.4	99.2	100										99.0
<b>2005</b>	99.4	99.9	99.7	97.8	97.4	99.6	99.9	99.7	99.6	99.6	99.7	99.5	99.3
<b>2004</b>	75.4	75.1	80.2	97.4	99.4	98.9	98.3	100	99.7	99.0	99.6	97.6	84.8

\* April, May and June averages 2 appliances

### % Shifts Retained Appliances Crewed - Baschurch

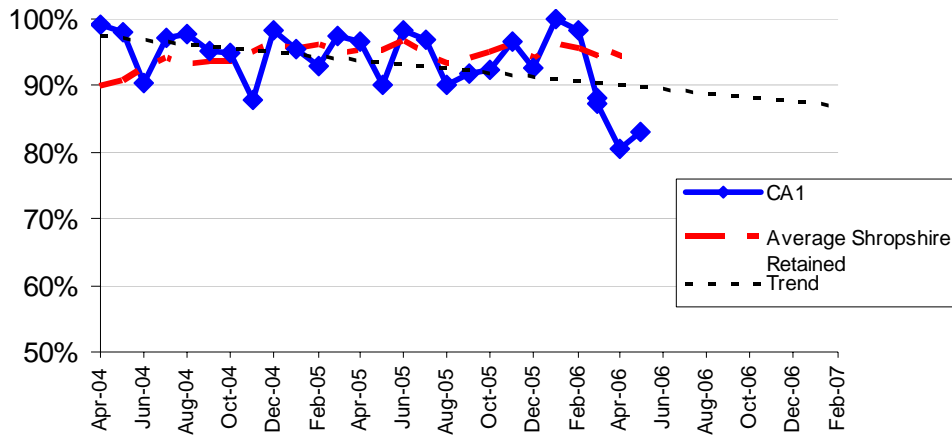


%	Apr	May	June	July	Aug	Sept	Oct	Nov	Dec	Jan	Feb	Mar	Yearly %
<b>2006</b>	97.3	99.3	99.1										98.5
<b>2005</b>	97.2	96.8	98.9	97.8	97.2	97.1	98.4	97.2	97.0	99.0	98.2	96.3	97.6
<b>2004</b>	80.9	80.0	82.7	77.6	86.9	84.1	91.3	82.4	91.1	96.7	99.5	97.1	87.5



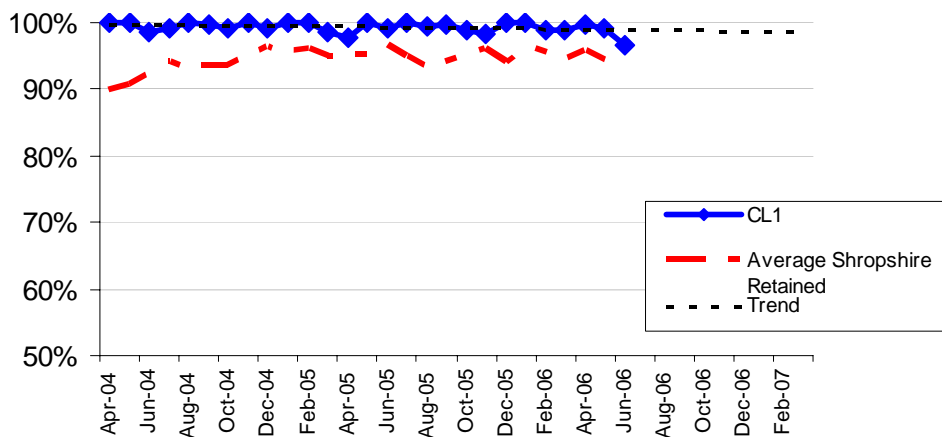
## OPS3 Appliance Availability / Crewing

### % Shifts Retained Appliances Crewed - Craven Arms



%	Apr	May	June	July	Aug	Sept	Oct	Nov	Dec	Jan	Feb	Mar	Yearly %
<b>2006</b>	87.3	80.5	83.1										83.6
<b>2005</b>	96.6	90.2	98.4	96.9	90.0	91.7	92.3	96.5	92.6	100	98.2	88.1	94.3
<b>2004</b>	99.0	80.0	90.3	97.1	97.6	95.2	95.0	87.8	98.4	95.4	92.8	97.4	95.3

### % Shifts Retained Appliances Crewed - Clun

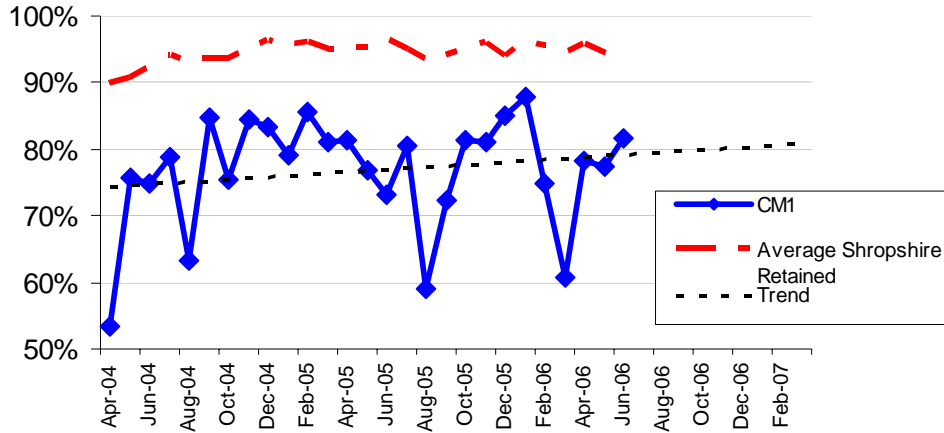


%	Apr	May	June	July	Aug	Sept	Oct	Nov	Dec	Jan	Feb	Mar	Yearly %
<b>2006</b>	99.8	99.2	96.6										98.5
<b>2005</b>	97.7	100	99.1	100	99.5	99.6	98.8	98.4	100	100	98.8	98.8	99.2
<b>2004</b>	100	100	98.7	99.0	100	99.8	99.1	100	99.3	100	100	98.5	99.5



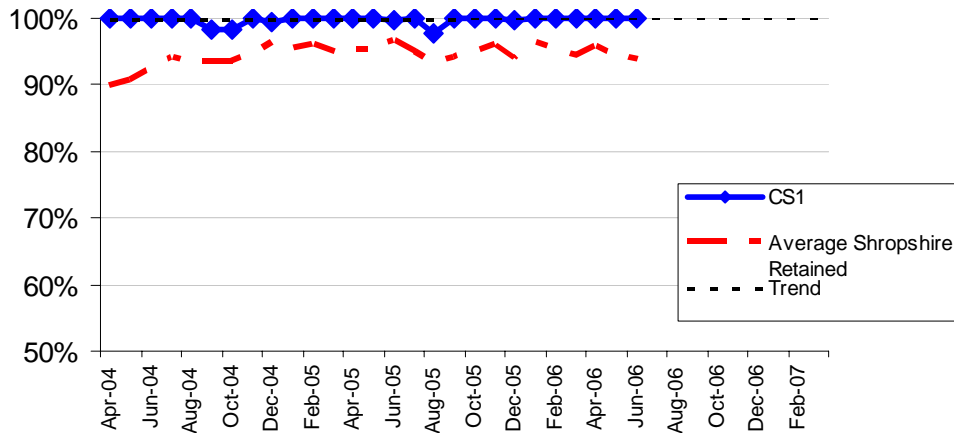
## OPS3 Appliance Availability / Crewing

### % Shifts Retained Appliances Crewed - Cleobury Mortimer



%	Apr	May	June	July	Aug	Sept	Oct	Nov	Dec	Jan	Feb	Mar	Yearly %
<b>2006</b>	78.2	77.4	81.6										79.1
<b>2005</b>	81.5	76.8	73.2	80.4	58.9	72.2	81.5	81.2	85.0	88.0	74.9	60.8	76.2
<b>2004</b>	53.4	75.7	74.9	78.7	63.3	84.7	75.3	84.4	83.2	79.2	85.6	81.2	76.6

### % Shifts Retained Appliances Crewed - Church Stretton

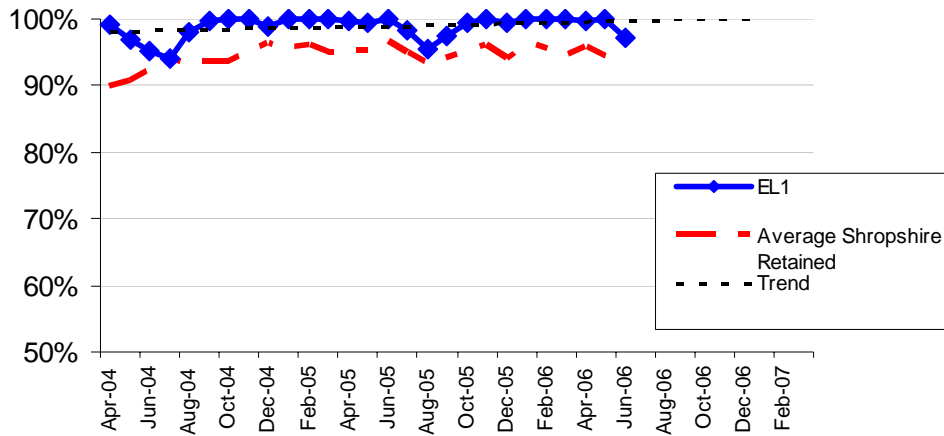


%	Apr	May	June	July	Aug	Sept	Oct	Nov	Dec	Jan	Feb	Mar	Yearly %
<b>2006</b>	100	100	100										100
<b>2005</b>	100	100	99.7	100	97.6	100	100	100	99.7	100	100	100	99.7
<b>2004</b>	100	100	100	100	100	98.3	98.4	100	99.5	100	100	100	99.7



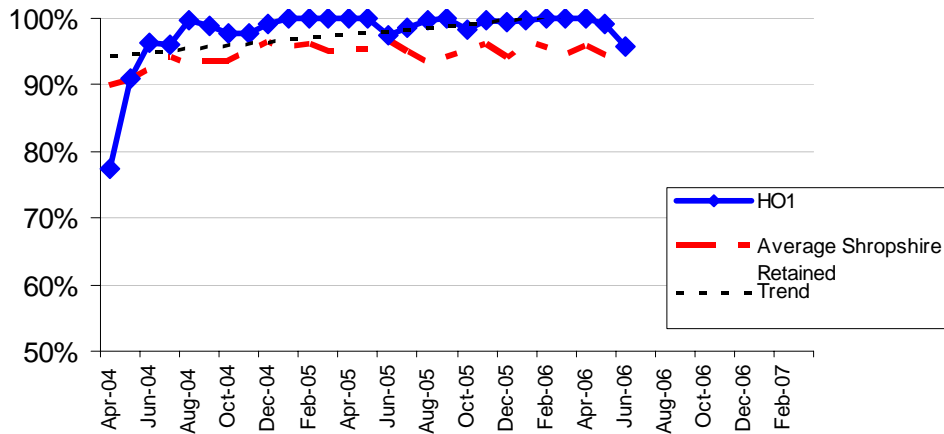
## OPS3 Appliance Availability / Crewing

### % Shifts Retained Appliances Crewed - Ellesmere



%	Apr	May	June	July	Aug	Sept	Oct	Nov	Dec	Jan	Feb	Mar	Yearly %
2006	99.7	100	97.3										99.0
2005	99.7	99.5	100	98.2	95.6	97.6	99.5	100	99.3	100	100	100	99.1
2004	99.2	97.0	95.1	94.0	98.0	99.7	99.9	100	99.0	100	100	100	96.2

### % Shifts Retained Appliances Crewed - Hodnet



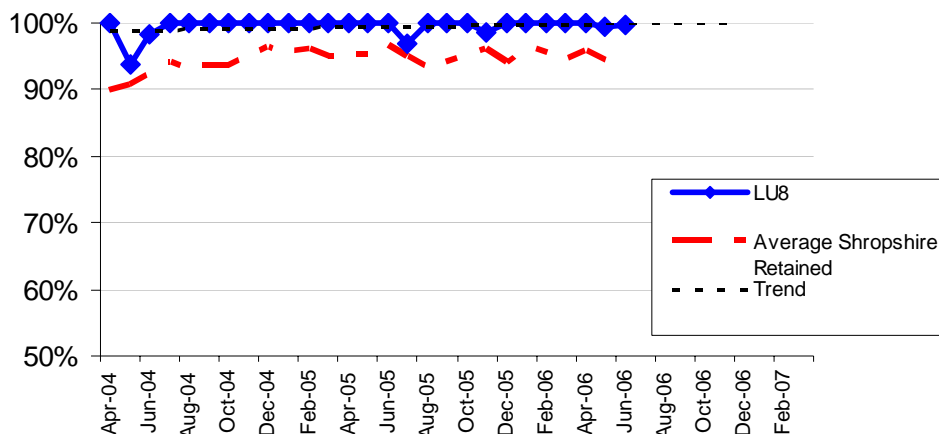
%	Apr	May	June	July	Aug	Sept	Oct	Nov	Dec	Jan	Feb	Mar	Yearly %
2006	100	99.1	95.7										98.
2005	100	100	97.4	98.4	99.7	100	98.3	99.6	99.4	99.8	100	99.9	99.4
2004	77.3	91.0	96.4	96.2	99.7	98.9	97.7	97.7	99.1	100	100	100	98.5





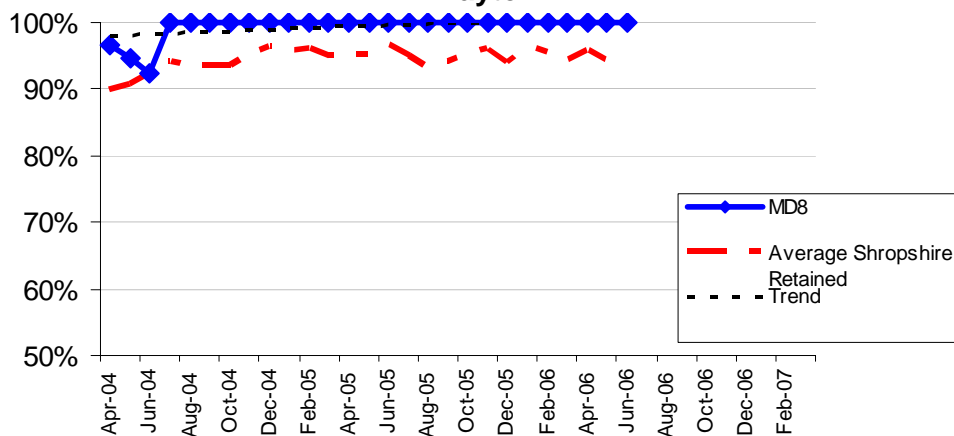
## OPS3 Appliance Availability / Crewing

### % Shifts Retained Appliances Crewed - Ludlow



%	Apr	May	June	July	Aug	Sept	Oct	Nov	Dec	Jan	Feb	Mar	Yearly %
<b>2006</b>	100	99.5	99.6										99.7
<b>2005</b>	100	100	100	96.9	100	100	100	98.6	100	100	100	100	99.6
<b>2004</b>	100	93.9	98.2 <sup>2</sup>	100	100	100	100	100	100	100	100	100	99.4

### % Shifts Retained Appliances Crewed - Market Drayton



%	Apr	May	June	July	Aug	Sept	Oct	Nov	Dec	Jan	Feb	Mar	Yearly %
<b>2006</b>	100	100	100										100
<b>2005</b>	100	100	100	100	100	100	100	100	100	100	100	100	100
<b>2004</b>	96.7	94.6	92.5 <sup>3</sup>	100	100	100	100	100	100	100	100	100	98.7

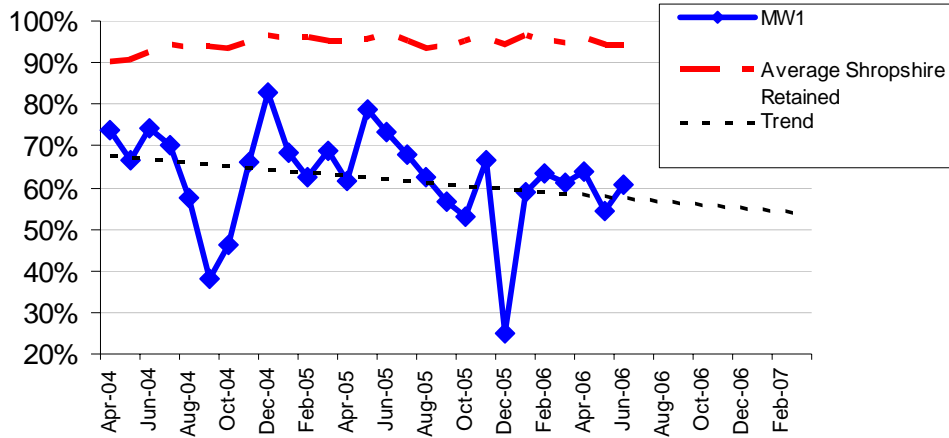
<sup>2</sup> April, May and June averages 2 appliances

<sup>3</sup> April, May and June averages 2 appliances



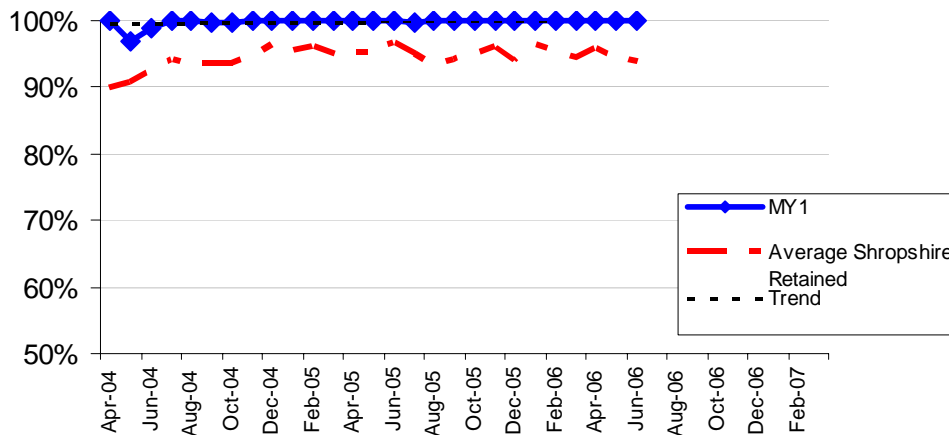
## OPS3 Appliance Availability / Crewing

### % Shifts Retained Appliances Crewed - Much Wenlock



%	Apr	May	June	July	Aug	Sept	Oct	Nov	Dec	Jan	Feb	Mar	Yearly %
<b>2006</b>	63.8	54.6	60.5										59.6
<b>2005</b>	61.4	78.7	73.5	67.9	62.3	56.8	52.8	66.6	25.1	58.8	63.3	61.2	60.7
<b>2004</b>	74.0	66.7	74.2	70.0	57.5	38.2	46.3	66.3	82.9	68.5	62.5	68.8	64.7

### % Shifts Retained Appliances Crewed - Minsterley

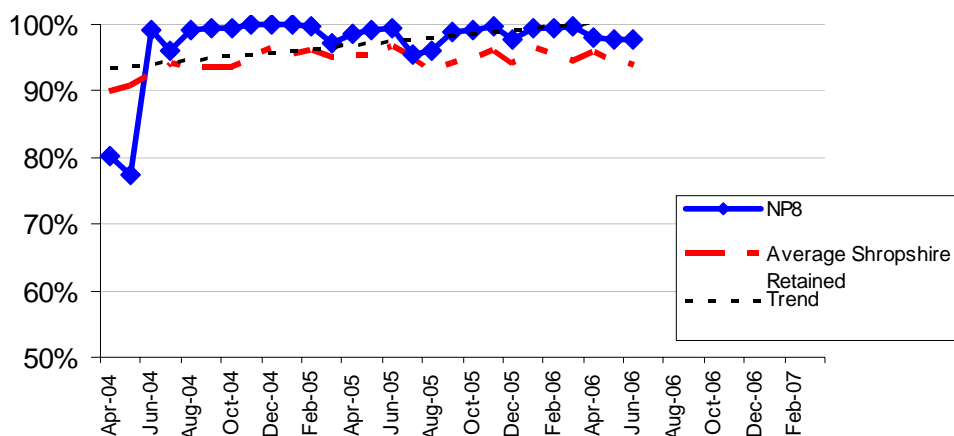


%	Apr	May	June	July	Aug	Sept	Oct	Nov	Dec	Jan	Feb	Mar	Yearly %
<b>2006</b>	10	100	100										100
<b>2005</b>	100	100	100	99.7	100	100	100	100	100	100	100	100	100
<b>2004</b>	100	96.9	98.9	100	100	99.7	99.8	100	100	100	100	100	99.6



## OPS3 Appliance Availability / Crewing

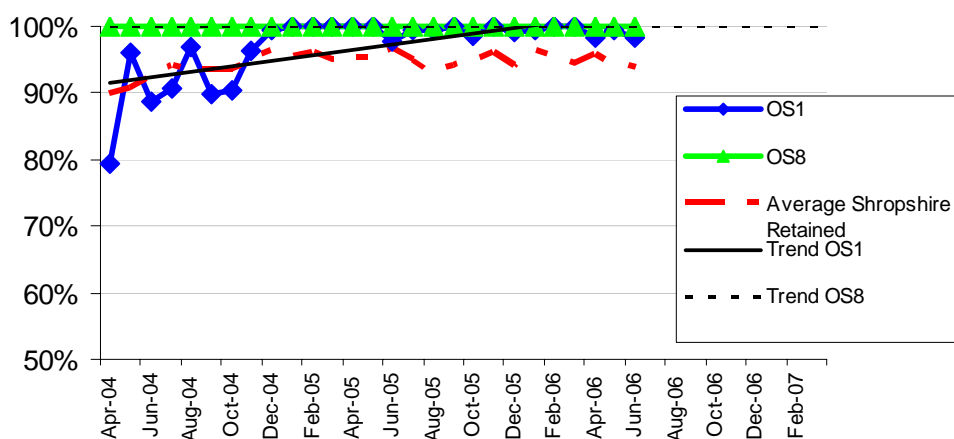
### % Shifts Retained Appliances Crewed - Newport



%	Apr	May	June	July	Aug	Sept	Oct	Nov	Dec	Jan	Feb	Mar	Yearly %
<b>2006</b>	98.0	97.6	97.6										97.8
<b>2005</b>	98.5	99.1	99.4	95.5	96.0	98.8	99.1	99.7	97.8	99.4	99.6	99.7	98.5
<b>2004</b>	80.3	77.3 <sup>§</sup>	99.2	96.1	99.1	99.3	99.4	100	100	100	99.8	97.3	95.7

<sup>§</sup> April and May averages appliances

### % Shifts Retained Appliances Crewed - Oswestry

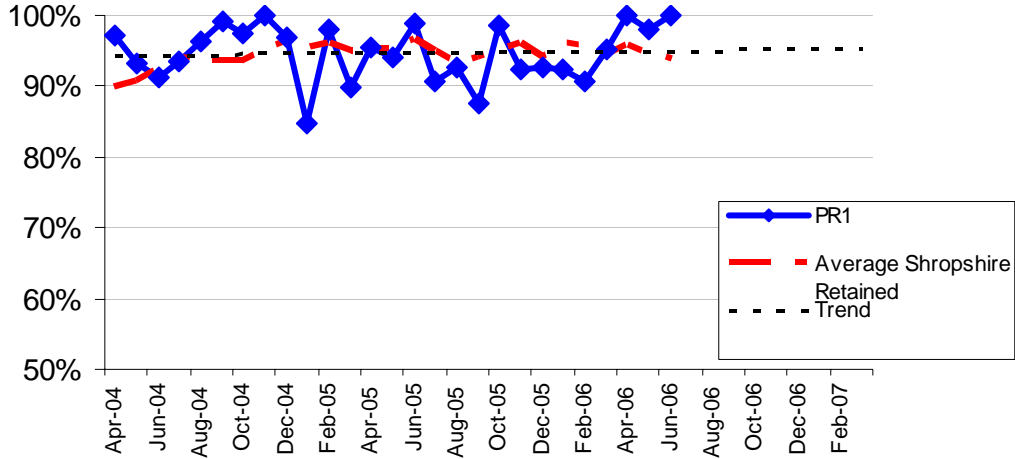


%		Apr	May	June	July	Aug	Sept	Oct	Nov	Dec	Jan	Feb	Mar	Yearly %
<b>2006</b>	OS1	98.2	99.3	98.3										98.6
	OS8	100	100	100										100
<b>2005</b>	OS1	100	100	97.6	99.6	99.3	100	98.5	100	99.1	99.5	100	100	99.5
	OS8	100	100	100	100	100	100	100	100	100	100	100	100	100
<b>2004</b>	OS1	79.4	95.9	88.7	90.5	96.8	89.7	90.4	96.4	99.4	100	100	100	93.9
	OS8	100	100	100	100	100	100	100	100	100	100	100	100	100



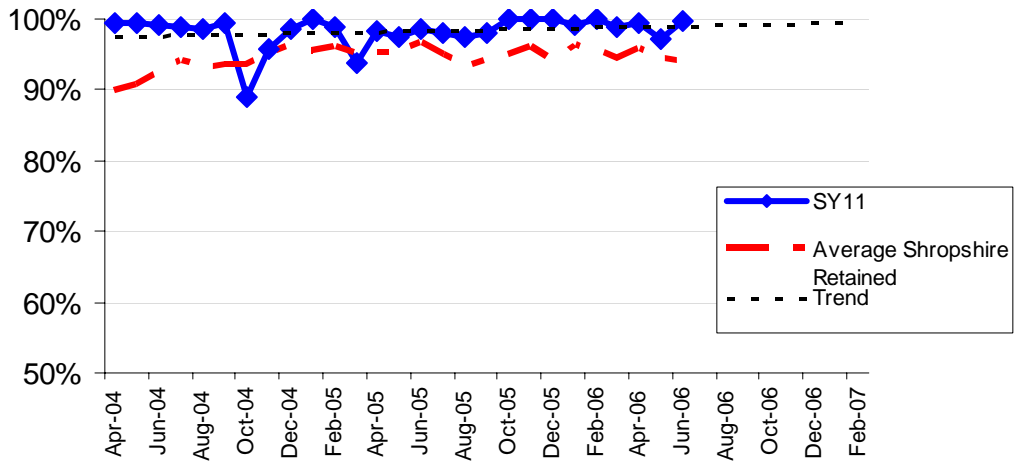
## OPS3 Appliance Availability / Crewing

### % Shifts Retained Appliances Crewed - Prees



%	Apr	May	June	July	Aug	Sept	Oct	Nov	Dec	Jan	Feb	Mar	Yearly %
<b>2006</b>	99.9	98.1	100										99.3
<b>2005</b>	95.5	94.1	98.9	90.7	92.7	87.7	98.5	92.4	92.8	92.3	90.8	95.3	93.5
<b>2004</b>	97.3	93.3	91.2	93.5	96.2	99.1	97.5	100	96.8	84.8	97.9	89.7	94.8

### % Shifts Retained Appliances Crewed - Shrewsbury Retained

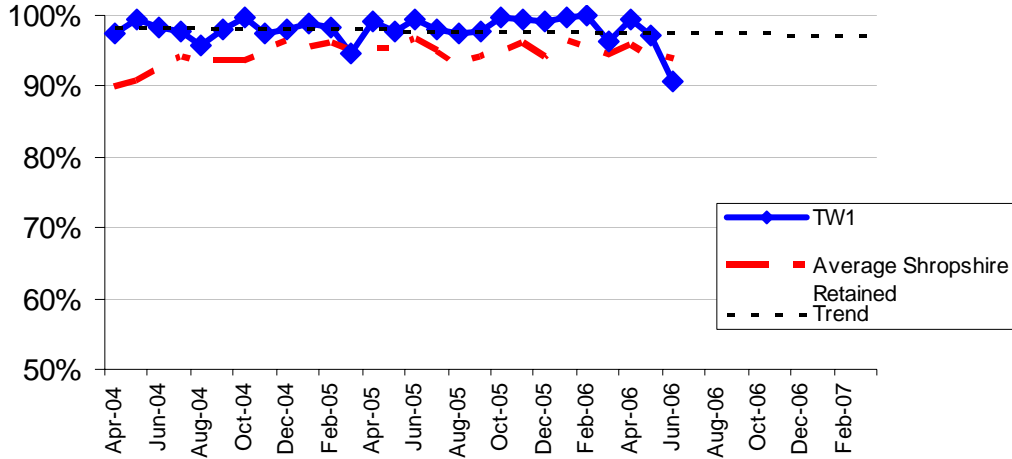


%	Apr	May	June	July	Aug	Sept	Oct	Nov	Dec	Jan	Feb	Mar	Yearly %
<b>2006</b>	99.4	97.1	99.7										98.7
<b>2005</b>	98.2	97.5	98.5	98.1	97.6	98.1	100	100	100	99.2	100	98.8	98.8
<b>2004</b>	99.4	99.5	99.1	98.9	98.6	99.5	88.9	95.8	98.6	100	98.9	93.8	97.6



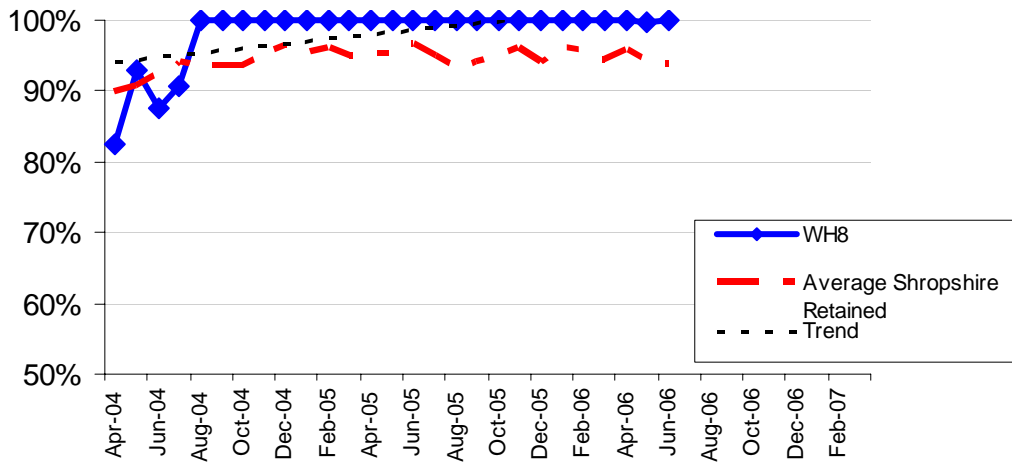
## OPS3 Appliance Availability / Crewing

### % Shifts Retained Appliances Crewed - Tweeddale



%	Apr	May	June	July	Aug	Sept	Oct	Nov	Dec	Jan	Feb	Mar	Yearly %
2006	99.5	97.2	90.7										95.8
2005	99.0	97.7	99.5	98.1	97.4	97.6	99.6	99.4	99.1	99.6	99.9	96.4	98.6
2004	97.4	99.4	98.4	97.8	95.8	98.1	99.7	97.4	97.9	98.9	98.4	94.6	97.8

### % Shifts Retained Appliances Crewed - Whitchurch



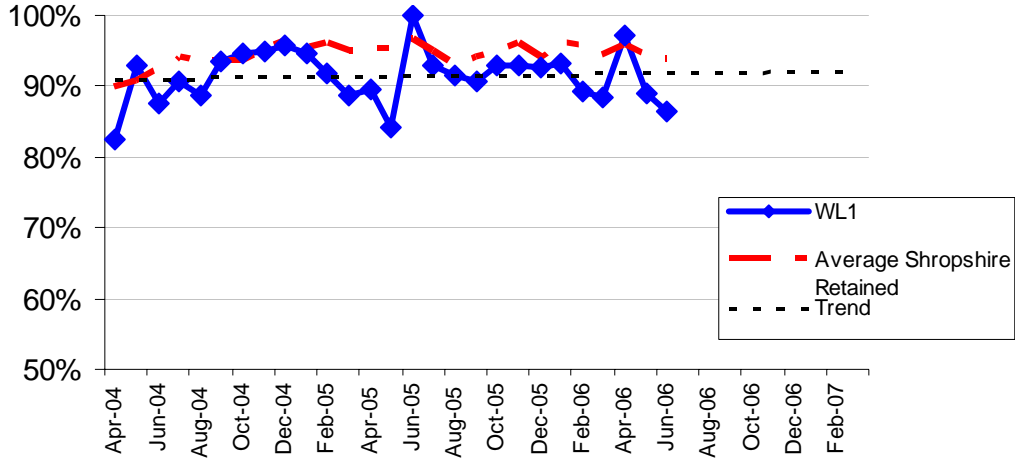
%	Apr	May	June	July	Aug	Sept	Oct	Nov	Dec	Jan	Feb	Mar	Yearly %
2006	100	99.6	100										99.9
2005	100	100	100	100	100	100	100	100	100	100	100	100	100
2004	98.8	97.9	98.9 <sup>5</sup>	100	100	100	100	100	100	100	100	100	99.6

<sup>5</sup> April, May and June averages 2 appliances



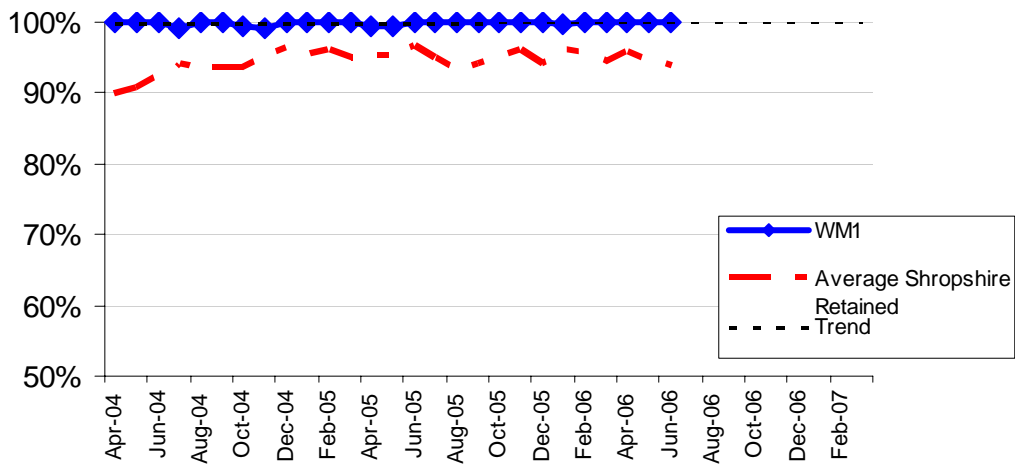
## OPS3 Appliance Availability / Crewing

### % Shifts Retained Appliances Crewed - Wellington



%	Apr	May	June	July	Aug	Sept	Oct	Nov	Dec	Jan	Feb	Mar	Yearly %
<b>2006</b>	97.1	89.0	86.6										90.9
<b>2005</b>	89.5	84.1	100	92.9	91.5	90.7	92.9	93.1	92.7	93.3	89.4	88.5	91.5
<b>2004</b>	82.5	93.0	87.6	90.6	88.6	93.6	94.6	94.8	95.6	94.7	91.9	88.7	91.4

### % Shifts Retained Appliances Crewed - Wem

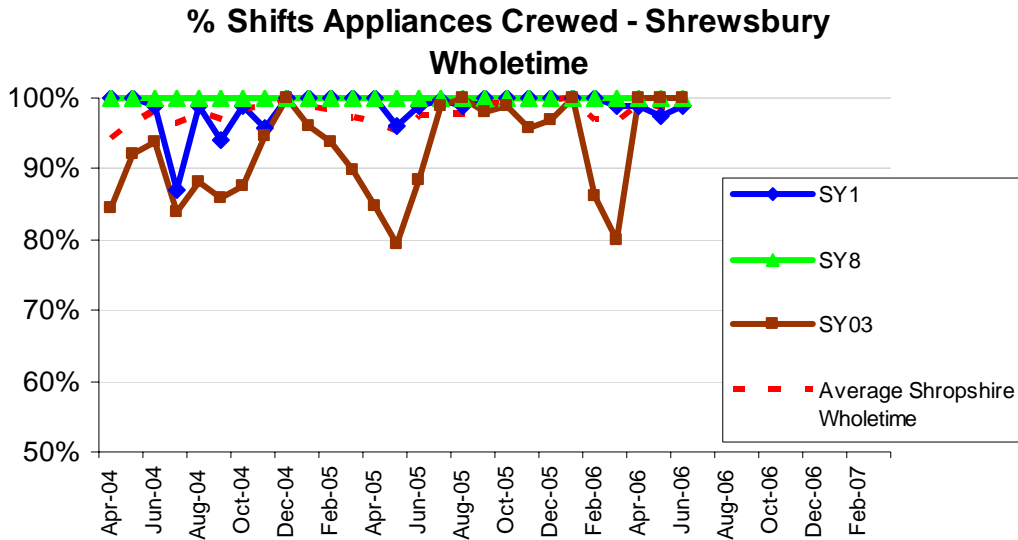


%	Apr	May	June	July	Aug	Sept	Oct	Nov	Dec	Jan	Feb	Mar	Yearly %
<b>2006</b>	100	100	100										100
<b>2005</b>	99.5	99.4	100	100	100	100	100	100	100	99.6	100	100	99.9
<b>2004</b>	100	100	100	99.1	100	100	99.6	99.3	100	100	100	100	93.8



# OPS3 Appliance Availability / Crewing

## WHOLETIME

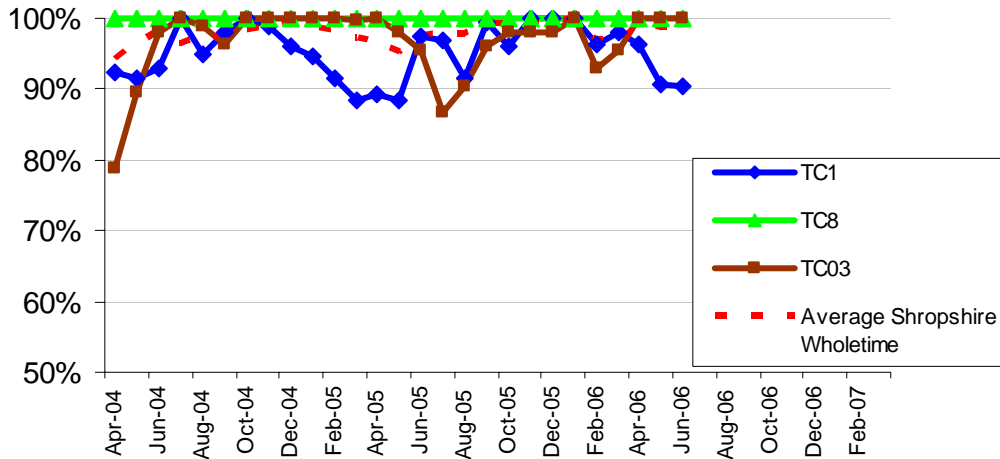


%		Apr	May	June	July	Aug	Sept	Oct	Nov	Dec	Jan	Feb	Mar	Yearly %
<b>2006</b>	SY1	98.9	97.6	98.8										98.4
	SY8	100	100	100										100
	SY03	100	100	100										100
<b>2005</b>	SY1	100	96.1	98.8	99.8	98.8	100	100	100	100	100	100	98.8	99.4
	SY8	100	100	100	100	100	100	100	100	100	100	100	100	100
	SY03	84.8	79.3	88.3	98.8	100	97.9	98.8	95.8	96.8	100	86.2	79.8	92.2
<b>2004</b>	SY1	100	100	98.8	86.9	99.0	94.2	98.8	95.8	100	100	100	100	97.8
	SY8	100	100	100	100	100	100	100	100	100	100	100	100	100
	SY03	84.6	92.0	93.7	83.9	88.2	85.8	87.5	94.6	100	96.0	93.8	89.9	90.8



## OPS3 Appliance Availability / Crewing

### % Shifts Appliances Crewed - Telford Central

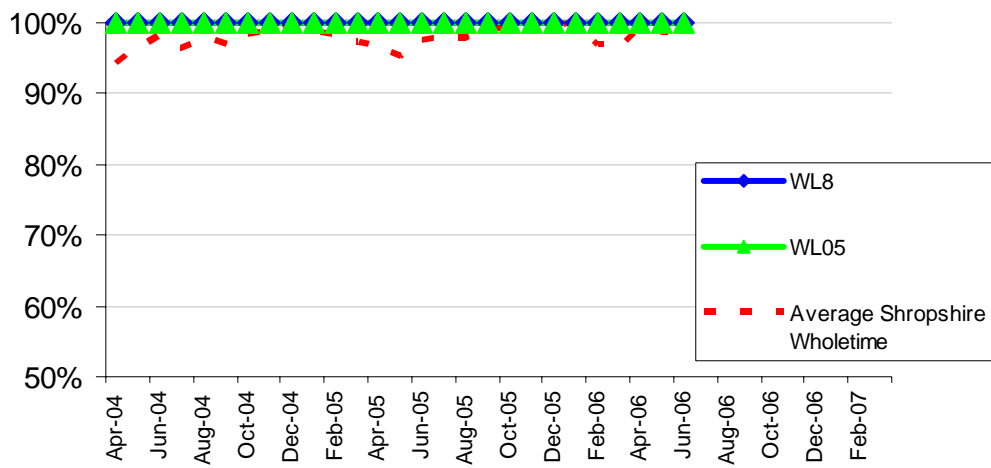


%		Apr	May	June	July	Aug	Sept	Oct	Nov	Dec	Jan	Feb	Mar	Yearly %
2006	TC1	96.3	90.7	90.4										92.5
	TC8	100	100	100										100
	TC03	100	100	100										100
2005	TC1	89.2	88.3	97.5	96.8	91.5	99.4	96.0	100	100	100	96.4	98.0	96.1
	TC8	100	100	100	100	100	100	100	100	100	100	100	100	100
	TC03	100	98.0	95.4	86.7	90.3	96.0	98.0	97.9	98.0	100	92.9	95.6	95.7
2004	TC1	92.3	91.5	92.9	100	95.0	97.9	100	98.8	96.0	94.8	91.5	88.3	94.9
	TC8	100	100	100	100	100	100	100	100	100	100	100	100	100
	TC03	78.8	89.5	97.9	100	98.8	96.4	100	100	100	100	100	99.6	96.7





### % Shifts Appliances Crewed - Wellington Wholetime



%		Apr	May	June	July	Aug	Sept	Oct	Nov	Dec	Jan	Feb	Mar	Yearly %
2006	WL8	100	100	100										100
	WL05	100	100	100										100
2005	WL8	100	100	100	100	100	100	100	100	100	100	100	100	100
	WL05	100	100	100	100	100	100	100	100	100	100	100	100	100
2004	WL8	100	100	100	100	100	100	100	100	100	100	100	100	100
	WL05	100	100	100	100	100	100	100	100	100	100	100	100	100

