

REPORT OF THE CHIEF FIRE OFFICER

PERFORMANCE AGAINST BEST VALUE PERFORMANCE INDICATORS APRIL 2005 TO MARCH 2006

1 Purpose of Report

To inform Members of the Brigade's performance against nationally prescribed Best Value Performance Indicators (BVPIs) for the period 1 April 2005 to 31 March 2006.

2 Recommendations

Members are requested to:

- a) Note the report content in respect of performance; and
- b) Consider the information provided, giving comments, where appropriate, for amendments to future reports to aid the regular assessment of performance.

3 Background

The Office of the Deputy Prime Minister (now renamed the Department for Communities and Local Government) publishes BVPIs for fire and rescue authorities. Performance against nationally prescribed BVPIs enables the Government to produce annual league tables, which in turn enables performance to be assessed against peer authorities and identifies areas of good or weak performance. Such information is invaluable in supporting the identification of priorities for forthcoming performance improvement strategies.

Following the publication of the Fire Service National Framework Document 2005/6, amendments have been made in relation to the reporting of some of the Best Value Performance Indicators.



4 Report Content

This report documents performance for the full reporting year 2005/06 against the BVPIs outlined in Annexe F of the Framework document and, as a consequence, published in Fire Authority's Performance Plan 2005/06.

For each performance indicator a graph has been produced, detailing the following information:

- Current performance for the 1st, 2nd, 3rd and 4th quarters of 2005/06;
- Trend line for 2005/06;
- Previous data from 2004/05, where applicable; and
- Target threshold, where appropriate.

Each graph is accompanied by two tables, which contain monthly statistics for 2005/06 and the previous year 2004/05. The first table contains figures based on a calculation (the performance indicator or PI) and the second table gives the actual figure. So, in the case of BVPI 142(ii) – the number of primary fires per 10,000 population – the first table gives a figure benchmarked against the population, whilst the second table gives the actual monthly figures (i.e. the actual number of primary fires). A year to date (titled YTD in the tables) total is also given, so that the running total of the current year can be monitored against the previous full year figure, except for BVPIs 2a, 2b, 11, 17, 157 and 210, where the last month reported is the cumulative full year total to date.

A final table at the foot of each page contains an analysis table, which includes the following:

- Yearly Target
- Has the Authority achieved its yearly target?
- Have the current results improved upon the same month last year?
- Will the current yearly results improve on the previous year?

For clarity, current calculations are based on the following data.

	Figure	Source
Population of Shropshire	448,900	Registrar General Mid Term Estimates 2004
Domestic dwellings in Shropshire	186,757	Chartered Institute of Public Finance and Accountancy (CIPFA) 2005
Non-domestic dwellings in Shropshire	15,155	Chartered Institute of Public Finance and Accountancy (CIPFA) 2005

5 Performance

Performance is summarised and recorded within the following appendices:

- **Appendix A** contains a snapshot summary table on performance and achievement against current BVPIs;
- **Appendix B** includes specific information on each individual Service Delivery and Corporate Health Indicator, including support graphs and tables;
- **Appendix C** contains BVPIs no longer required by the Government (July 2005); and
- **Appendix D** is for monitoring purposes, based on the availability of retained and wholtime firefighters in the County.



It should be noted that, as many new BVPIs occur for 2005/06, no historic information exists to enable comparisons with previous periods to be made. Moreover, the absence of historical data and league tables prevented meaningful targets to be set. This situation has changed, however, and targets have now been set, based on the 2005/06 performance for all BVPIs, and will be published within the 2006/07 Performance Plan.

6 Legal Comment

Fire and rescue authorities are required to report BVPIs to the Government on a quarterly and annual basis. BVPIs to be reported on are promulgated at Annex F of the Fire and Rescue Service National Framework Document 2005/06. As a consequence these BVPIs and associated targets appear in the Authority's Performance Plan 2005/06.

7 Appendices

- Appendix A** Summary Table on Performance and Achievement against Current BVPIs
- Appendix B** Service Delivery Indicators
- Appendix C** BVPIs no longer required by the Government
- Appendix D** OPS3 Appliance Availability / Crewing

8 Background Papers

Office of the Deputy Prime Minister

Fire Service Circular 60-2004 (December 2004) Guidance for Best Value Performance Indicators (BVPIs) 2005/06

Fire Service Circular 14-2005 (March 2005) Revised Guidance for Best Value Performance Indicators (BVPIs) 2005/06

Fire and Rescue Service National Framework Document 2005/06

Implications of all of the following have been considered and, where they are significant (i.e. marked with an asterisk), the implications are detailed within the report itself.

Balance Score Card		Integrated Risk Management Planning	
Business Continuity Planning		Legal	
Capacity		Member Involvement	
Civil Contingencies Act		National Framework	*
Comprehensive Performance Assessment		Operational Assurance	
Equality and Diversity		Retained	
Efficiency Savings		Risk and Insurance	
Environmental		Staff	
Financial		Strategic Planning	*
Fire Control/Fire Link		West Midlands Regional Management Board	

For further information about this report please contact Alan Taylor, Chief Fire Officer, on 01743 260201 or Helen Jones, Statistics Research Officer, on 01743 260277.



Summary Table on Performance and Achievement against Current BVPIs

BVPI		Definition	Has the Authority achieved target?*	Have current results improved since the same month last year?	Have current yearly results (including predictive trend) improved since last year?
142	ii	The number of primary fires per 10,000 population	√	√	√
	iii	The number of accidental fires in dwellings per 10,000 dwellings	X	X	X
143	i	The number of deaths arising from accidental fires in dwellings per 100,000 pop	X	X	X
	ii	The number of injuries (excluding precautionary checks) arising from accidental fires in dwellings per 100,000 population	X	X	X
144		The percentage of accidental dwelling fires confined to room of origin	√	N/A	N/A
146	i	The number of calls to malicious false alarms not attended per 1,000 population	N/A	N/A	N/A
	ii	The number of calls to malicious false alarms attended per 1,000 population	N/A	N/A	N/A
149	i	The number of false alarms caused by automatic fire detection per 1,000 non-domestic properties	√	√	√
	ii	The number of those properties with more than 1 attendance	N/A	N/A	N/A
	iii	The percentage of calls which are to a property with more than 1 attendance	N/A	N/A	N/A
150		The expenditure per head of population on the provision of fire and rescue services	Data not yet collated		
206	i	The number of deliberate primary fires (excluding deliberate primary fires in vehicles) per 10,000 population	N/A	N/A	N/A
	ii	The number of deliberate primary fires in vehicles per 10,000 population	N/A	N/A	N/A
	iii	The number of deliberate secondary fires (excluding deliberate secondary fires in vehicles) per 10,000 population	N/A	N/A	N/A
	iv	The number of deliberate secondary fires in vehicles per 10,000 population	N/A	N/A	N/A
207		The number of fires in non-domestic premises per 1,000 non-domestic premises	N/A	N/A	N/A
208		The percentage of people in accidental dwellings fires who escape unharmed without FRA assistance at the fire	N/A	N/A	N/A



209	i	The percentage of fires attended in dwellings where a smoke alarm had activated	N/A	N/A	N/A
	ii	The percentage of fires attended in dwellings where a smoke alarm was fitted but did not activate	N/A	N/A	N/A
	iii	The percentage of fires attended in dwellings where no smoke alarm was fitted	N/A	N/A	N/A
2a		The level (if any) of the Equality Standard for Local Government to which the authority conforms	X	√	√
2b		The quality of an Authority's Race Equality Scheme (RES) and the improvements resulting from its application	√	N/A	N/A
8		The percentage of undisputed invoices which were paid in 30 days	X	√	√
11	i	The percentage of top 5% of earners that are women	√	√	√
	ii	The percentage of top 5% of earners from ethnic minority communities	√	√	√
	iii	The percentage of top 5% of earners that have a disability	N/A	N/A	N/A
12	i	The proportion of working days/shifts lost to sickness absence by wholetime uniformed staff	√	X	X
	ii	The proportion of working days/shifts lost to sickness absence by all staff	X	X	X
15	i	Wholetime fire-fighter ill-health retirements as a percentage of the total workforce	√	√	√
	ii	Control and non-uniformed ill-health retirements as a percentage of the total workforce	√	=	=
16a	i	The percentage of wholetime and retained duty system employees with a disability	N/A	N/A	N/A
	ii	The percentage of control and non-uniformed employees with a disability	N/A	N/A	N/A
16b		The percentage of the economically active population in the authority area who have a disability	Data not yet collated		
17a		The percentage of uniformed staff from ethnic minority communities	N/A	N/A	N/A
17b		The percentage of economically active (persons aged 18-54) population from ethnic minority communities in the fire and rescue service area	Data not yet collated		
157		The number of types of interactions that are enabled for e-delivery as a percentage of the types of interactions that are legally permissible for e-delivery	X	√	√
210		The percentage of women firefighters	N/A	N/A	N/A

* In the majority of cases, where a target has not been set there has been no previous data to base one on (new BVPIs, hence current data cannot be compared to previous results).



BVPIs no longer requested by the Government (included for reference)

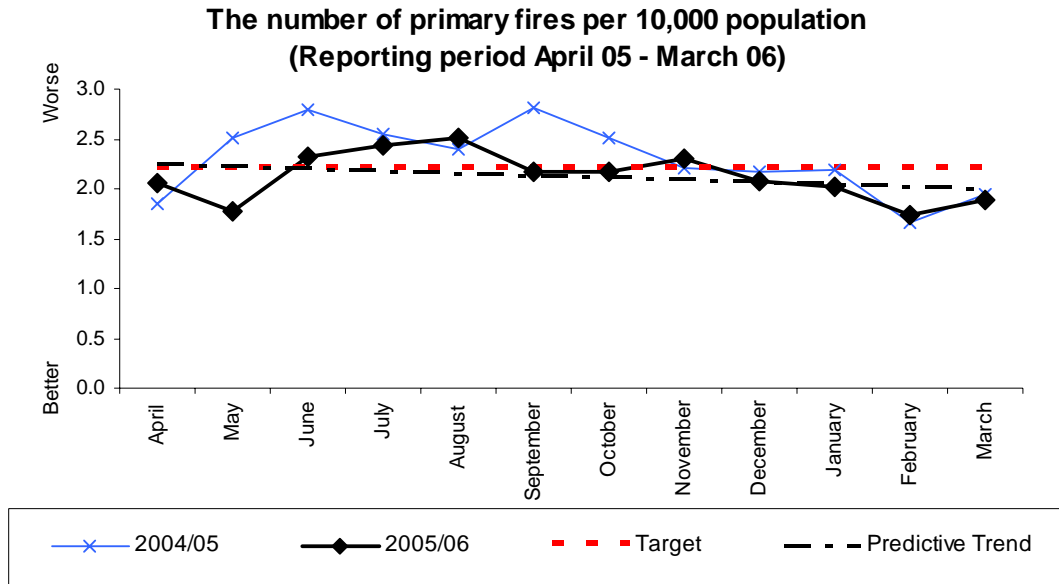
- 145i** The percentage of incidents at which the number of appliances met the standards of fire cover
- 145ii** The percentage of incidents at which the number of riders met the standards of fire cover
- 145iii** The percentage of incidents at which the attendance times met the standards of fire cover
- 146** The number of calls to malicious false alarms per 1,000 population
- 206** The number of deliberate fires per 10,000 population
- 17** The percentage of minority ethnic community uniformed staff; comparative with the percentage of minority ethnic community population of working age in Brigade area

Amendments have been made to the figures reported under BVPI 149. The guidance and implementation of the reporting of this statistic now allows for the removal of all properties for 2005/06. This is to be considered especially in relation to yearly comparisons, as previous years statistics contain domestic properties.



Service Delivery Indicators

142ii



Monthly Stats (per 10,000 population)

	Apr	May	June	July	Aug	Sept	Oct	Nov	Dec	Jan	Feb	Mar	YTD
2005	2.05	1.78	2.32	2.43	2.52	2.16	2.16	2.29	2.07	2.03	1.74	1.89	25.44
2004	1.9	2.5	2.8	2.6	2.4	2.8	2.5	2.2	2.2	2.2	1.7	1.9	27.7

Monthly Stats (actual incidents)

	Apr	May	June	July	Aug	Sept	Oct	Nov	Dec	Jan	Feb	Mar	YTD
2005	92	80	104	109	113	97	97	103	93	91	78	85	1142
2004	83	112	125	114	107	126	112	99	97	98	74	87	1239

Analysis

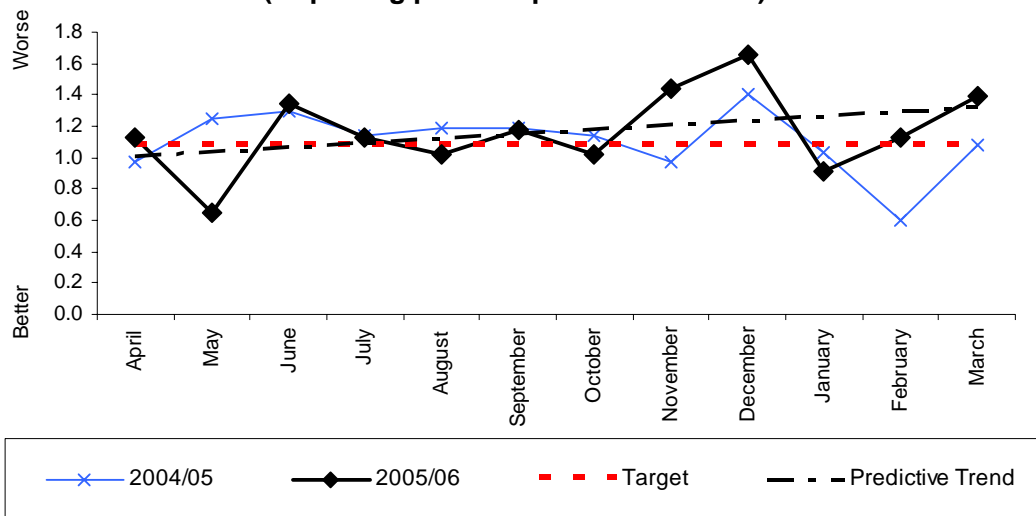
Yearly target	Will Authority achieve target? (Estimate using predictive trend)	Have current results improved since the same month last year?	Have current yearly results (including predictive trend) improved since last year?
26.4	√	√	√

Commentary



142(iii)

The number of accidental fires in dwellings per 10,000 dwellings
(Reporting period April 05 - March 06)



Monthly Stats (per 10,000 dwellings)

	Apr	May	June	July	Aug	Sept	Oct	Nov	Dec	Jan	Feb	Mar	YTD
2005	1.12	0.64	1.34	1.12	1.02	1.18	1.02	1.45	1.66	0.91	1.12	1.39	13.98
2004	1.0	1.2	1.3	1.1	1.2	1.2	1.1	1.0	1.4	1.0	0.6	1.1	13.2

Monthly Stats (actual incidents)

	Apr	May	June	July	Aug	Sept	Oct	Nov	Dec	Jan	Feb	Mar	YTD
2005	21	12	25	21	19	22	19	27	31	17	21	26	261
2004	18	23	24	21	22	22	21	18	26	19	11	20	245

Analysis

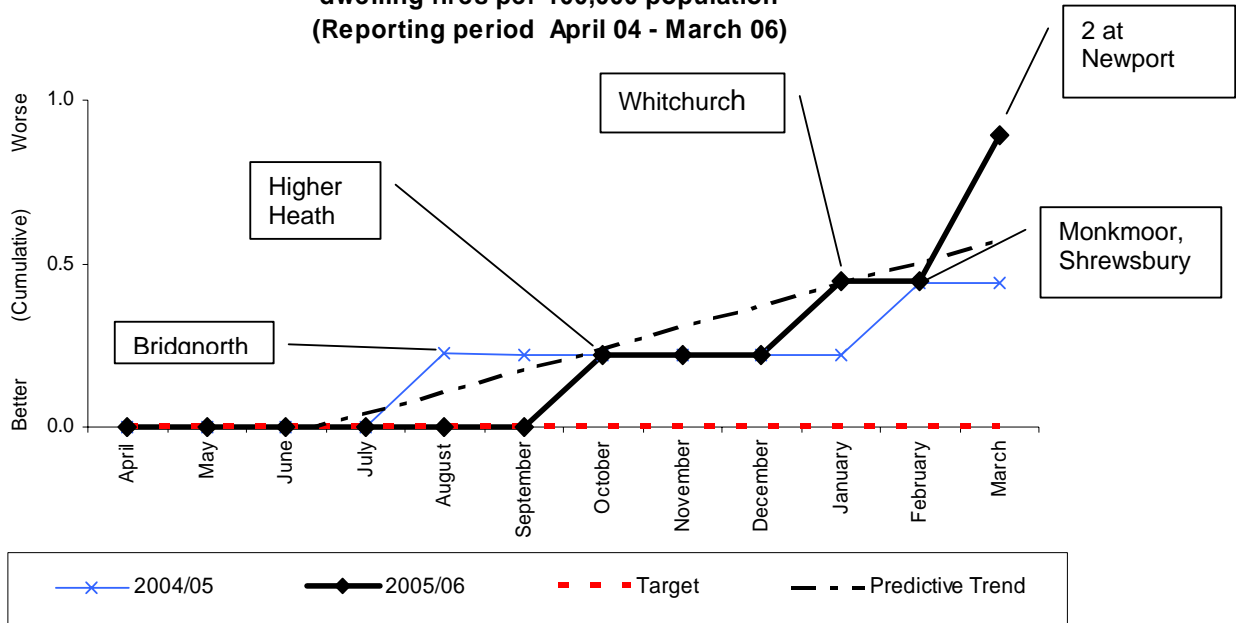
Yearly target	Will Authority achieve target? (Estimate using predictive trend)	Have current results improved since the same month last year?	Have current yearly results (including predictive trend) improved since last year?
13	X	X	X

Commentary



143(i)

Number of deaths per 100,000 population arising from accidental dwelling fires per 100,000 population (Reporting period April 04 - March 06)



Monthly Stats (per 100,000 population)

	Apr	May	June	July	Aug	Sept	Oct	Nov	Dec	Jan	Feb	Mar	YTD
2005	0.00	0.00	0.00	0.00	0.00	0.00	0.22	0.00	0.22	0.22	0.00	0.45	1.11
2004	0	0	0	0	0.22	0	0	0	0	0	0.22	0	0.45

Monthly Stats (people)

	Apr	May	June	July	Aug	Sept	Oct	Nov	Dec	Jan	Feb	Mar	YTD
2005	0	0	0	0	0	0	1	0	1	1	0	2	5
2004	0	0	0	0	1	0	0	0	0	0	1	0	2

Analysis

Yearly target	Will Authority achieve target? (Estimate using predictive trend)	Have current results improved since the same month last year?	Have current yearly results (including predictive trend) improved since last year?
0	X	X	X

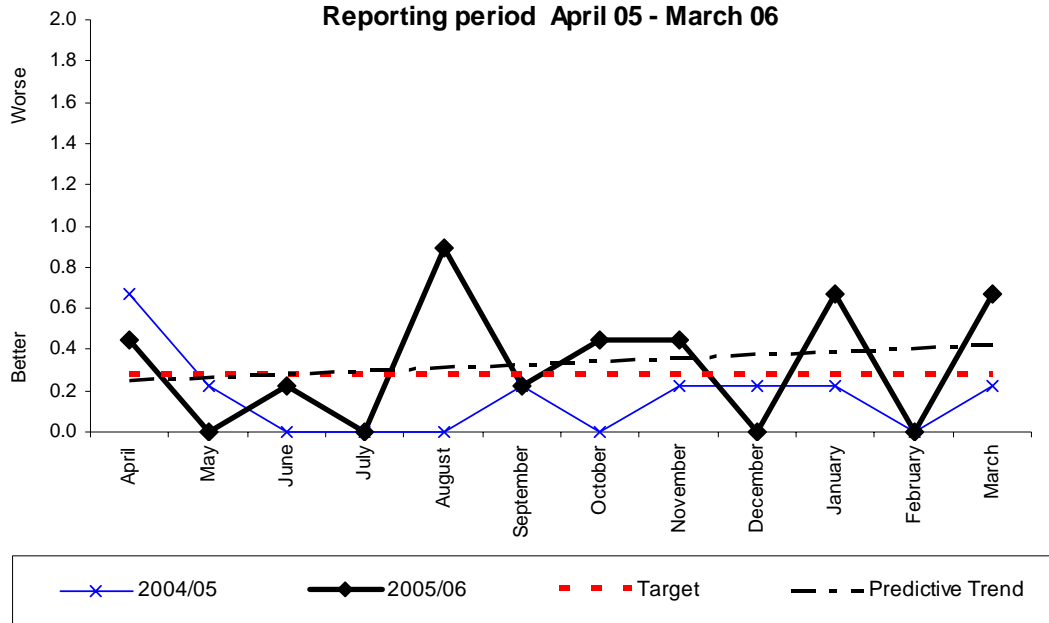
Commentary

This now takes into account the fire death originally reported for Ellesmere in December having been correctly allocated against Farm Property. It also needs to be noted that the 2 fire deaths occurring at Newport could be removed in the future, but are currently classified as accidental.



143(ii)

The number of injuries (excluding precautionary checks) arising from accidental fires in dwellings per 100,000 population
Reporting period April 05 - March 06



Monthly Stats (per 100,000 population)

	Apr	May	June	July	Aug	Sept	Oct	Nov	Dec	Jan	Feb	Mar	YTD
2005	0.45	0.00	0.22	0.00	0.89	0.22	0.45	0.45	0.00	0.67	0	0.67	4.01
2004	0.67	0.22	0	0	0	0.22	0	0.22	0.22	0.22	0	0.22	2.02

Monthly Stats (actual incidents)

	Apr	May	June	July	Aug	Sept	Oct	Nov	Dec	Jan	Feb	Mar	YTD
2005	2	0	1	0	4	1	2	2	0	3	0	3	18
2004	3	1	0	0	0	1	0	1	1	1	0	1	9

Analysis

Yearly target	Will Authority achieve target? (Estimate using predictive trend)	Have current results improved since the same month last year?	Have current yearly results (including predictive trend) improved since last year?
3.30	X	X	X

Commentary

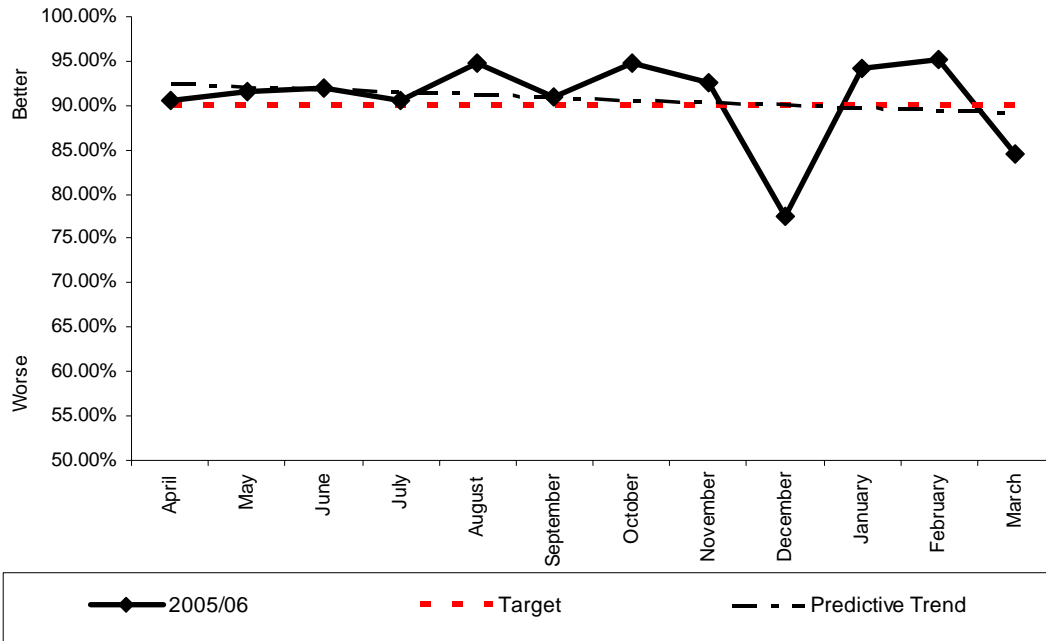
Please note that 3 injuries occurring in Shrewsbury have been amended, upon verification, to be precautionary checks and not asphyxia, as originally reported on the FDR1 forms. 1 injury previously occurring in Whitchurch has now become a fire death.

2005-06 Clun 1; Newport 3; Shifnal 2; Shrewsbury 4; Telford Central 3; Wellington 3; Whitchurch 2

2004-05 Ludlow 1; Oswestry 1; Shrewsbury 3; Telford Central 4; Wellington 1



The percentage of accidental dwelling fires confined to room of origin
(Reporting period April 05 - March 06)



Monthly Stats (percentage)

	Apr	May	June	July	Aug	Sept	Oct	Nov	Dec	Jan	Feb	Mar
2005	90.48%	91.67%	92.00%	90.48%	94.74%	90.91%	94.74%	92.59%	77.42%	94.12%	95.24%	84.62%
2004	No previous data as BVPI was split into C and D risk areas											

Monthly Stats (actual incidents)

	Apr	May	June	July	Aug	Sept	Oct	Nov	Dec	Jan	Feb	Mar	YTD	%
2005	19/21	11/12	23/25	19/21	18/19	20/22	18/19	25/27	24/31	16/17	20/21	22/26	235/261	90.04%
2004	No previous data as BVPI was split into C and D risk areas													

Analysis

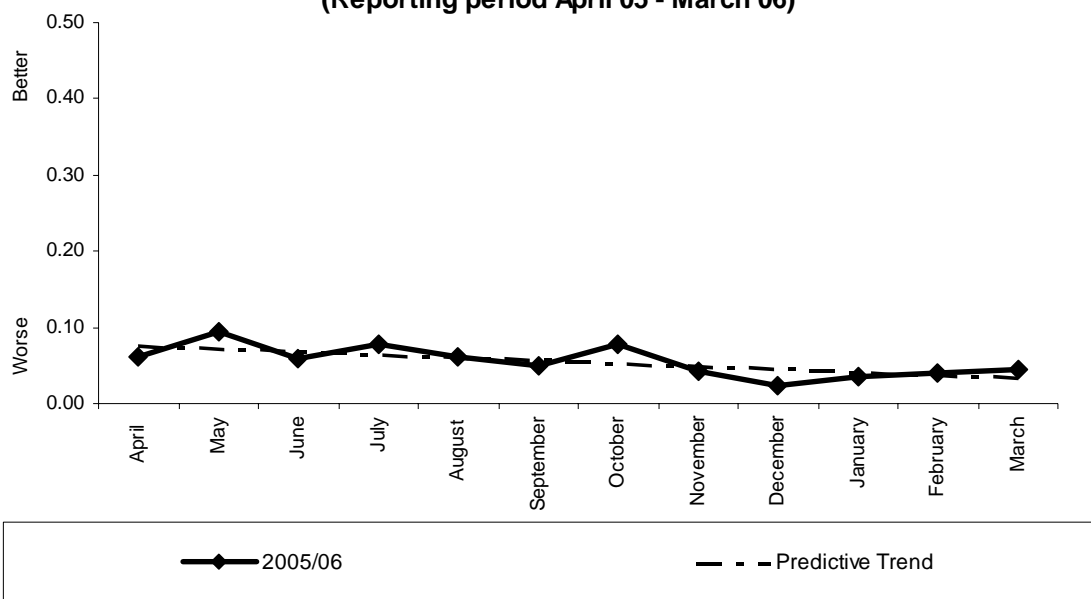
Yearly target	Will Authority achieve target? (Estimate using predictive trend)	Have current results improved since the same month last year?	Have current yearly results (including predictive trend) improved since last year?
90.0%	√	N/A	N/A

Commentary



146(i)

**The number of calls to malicious false alarms not attended per 1,000 population
(Reporting period April 05 - March 06)**



Monthly Stats (per 1,000 population)

	Apr	May	June	July	Aug	Sept	Oct	Nov	Dec	Jan	Feb	Mar	YTD
2005	0.06	0.09	0.06	0.08	0.06	0.05	0.08	0.04	0.02	0.04	0.04	0.04	0.66
2004	No previous data since this BVPI has been divided from 146 into 146(i) and 146(ii)												

Monthly Stats (actual incidents)

	Apr	May	June	July	Aug	Sept	Oct	Nov	Dec	Jan	Feb	Mar	YTD
2005	27	42	26	35	27	22	35	19	11	16	18	20	298
2004	No previous data since this BVPI has been divided from 146 into 146(i) and 146(ii)												

Analysis

Yearly target	Will Authority achieve target? (Estimate using predictive trend)	Have current results improved since the same month last year?	Have current yearly results (including predictive trend) improved since last year?
No target set as no previous data	N/A	N/A	N/A

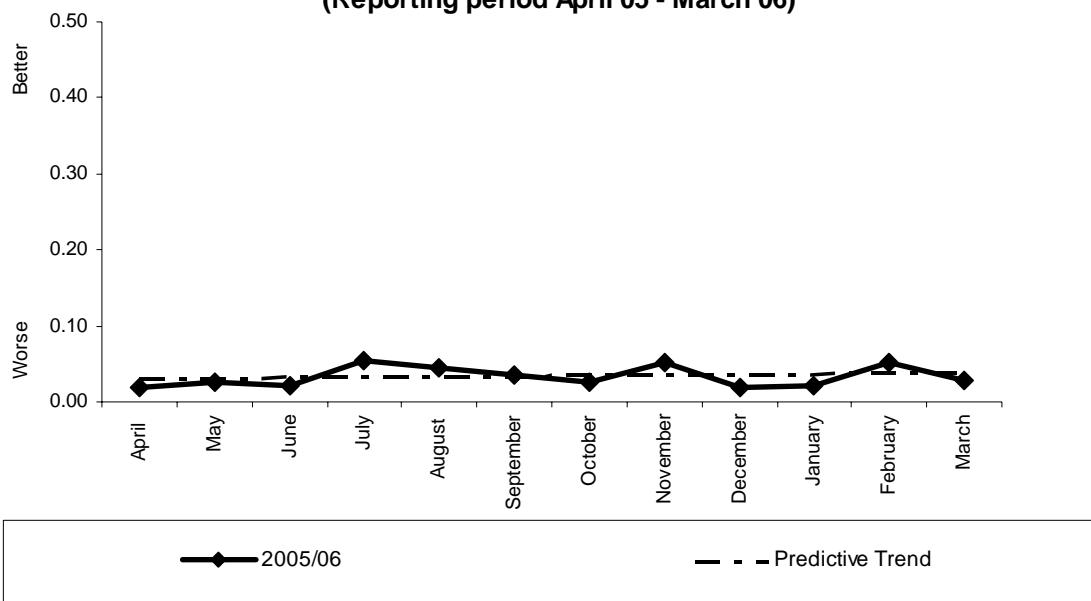
Commentary

A target of 0.67 has been set for the 2006/07 reporting year, and monitoring against this target will appear in future reports.



146(ii)

The number of calls to malicious false alarms attended per 1,000 population (Reporting period April 05 - March 06)



Monthly Stats (per 1,000 population)

	Apr	May	June	July	Aug	Sept	Oct	Nov	Dec	Jan	Feb	Mar	YTD
2005	0.02	0.03	0.02	0.05	0.04	0.04	0.03	0.05	0.02	0.02	0.05	0.03	0.40
2004	No previous data since this BVPI has been divided from 146 into 146(i) and 146(ii)												

Monthly Stats (actual incidents)

	Apr	May	June	July	Aug	Sept	Oct	Nov	Dec	Jan	Feb	Mar	YTD
2005	8	12	10	24	20	16	12	23	8	10	23	13	179
2004	No previous data since this BVPI has been divided from 146 into 146(i) and 146(ii)												

Analysis

Yearly target	Will Authority achieve target? (Estimate using predictive trend)	Have current results improved since the same month last year?	Have current yearly results (including predictive trend) improved since last year?
No target set as no previous data	N/A	N/A	N/A

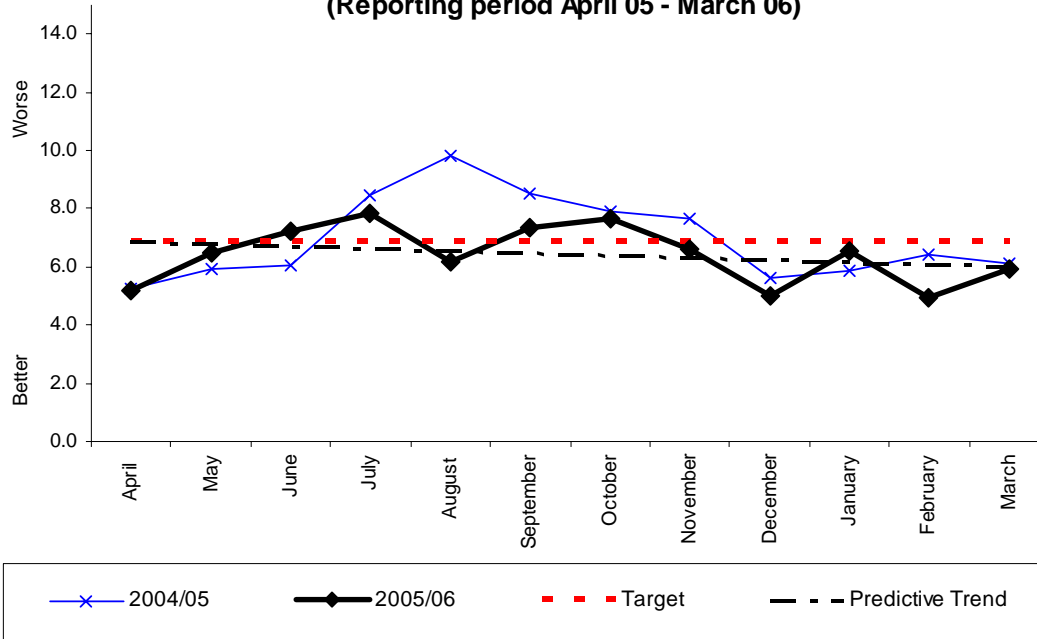
Commentary

A target of 0.33 has been set for the 2006/07 reporting year, and monitoring against this target will appear in future reports.



149(i)

The number of false alarms caused by automatic fire detection apparatus per 1,000 non-domestic properties
(Reporting period April 05 - March 06)



Monthly Stats (per 1,000 non-domestic properties)

	Apr	May	June	July	Aug	Sept	Oct	Nov	Dec	Jan	Feb	Mar	YTD
2005	5.21	6.47	7.19	7.85	6.20	7.32	7.65	6.60	5.01	6.53	4.95	5.94	76.94
2004	5.2	5.9	6.0	8.4	9.8	8.5	7.9	7.6	5.6	5.8	6.4	6.1	83.2

Monthly Stats (actual incidents)

	Apr	May	June	July	Aug	Sept	Oct	Nov	Dec	Jan	Feb	Mar	YTD
2005	79	98	109	119	94	111	116	100	76	99	75	90	1166
2004	79	89	91	127	148	128	119	115	85	88	97	92	1258

Analysis

Yearly target	Will Authority achieve target? (Estimate using predictive trend)	Have current results improved since the same month last year?	Have current yearly results (including predictive trend) improved since last year?
82.0	√	√	√

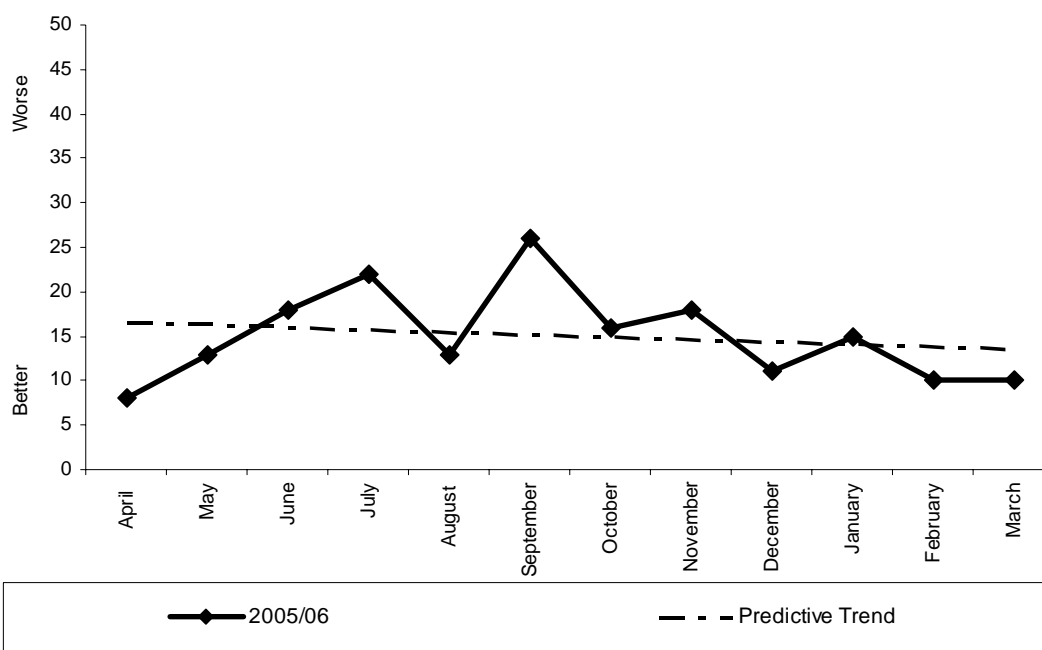
Commentary

Please note that domestic properties have been removed from the reporting of this BVPI for 2005/06. As such, previous years are not directly comparable. A reviewed target of 77.0 has been set for the 2006/07 reporting year taking this into consideration.



149(ii)

**The number of those properties with more than 1 attendance
(Reporting period April 05 - March 06)**



Monthly Stats (per 1,000 non-domestic properties)

	Apr	May	June	July	Aug	Sept	Oct	Nov	Dec	Jan	Feb	Mar	YTD
2005	0.02	0.03	0.04	0.05	0.03	0.06	0.04	0.04	0.02	0.03	0.02	0.02	0.4
2004	No previous data as this is a new BVPI												

Monthly Stats (actual incidents)

	Apr	May	June	July	Aug	Sept	Oct	Nov	Dec	Jan	Feb	Mar	YTD
2005	8	13	18	22	13	26	16	18	11	15	10	10	180
2004	No previous data as this is a new BVPI												

Analysis

Yearly target	Will Authority achieve target? (Estimate using predictive trend)	Have current results improved since the same month last year?	Have current yearly results (including predictive trend) improved since last year?
No target set as no previous data	N/A	N/A	N/A

Commentary

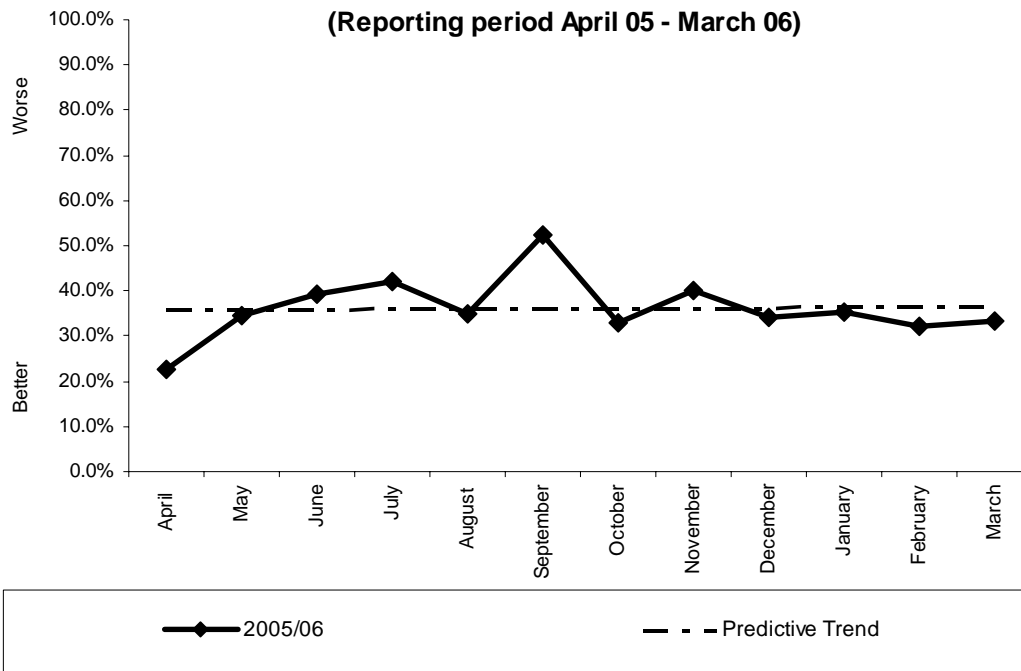
A target of 12.0 has been set for the 2006/07 reporting year, and monitoring against this target will appear in future reports.



149(iii)

The percentage of calls which are to a property with more than 1 attendance

(Reporting period April 05 - March 06)



Monthly Stats (percentage)

	Apr	May	June	July	Aug	Sept	Oct	Nov	Dec	Jan	Feb	Mar
2005	22.78%	34.69%	39.45%	42.02%	35.11%	52.25%	32.76%	40.00%	34.21%	35.35%	32.00%	33.33%
2004	No previous data as this is a new BVPI											

Monthly Stats (actual incidents)

	Apr	May	June	July	Aug	Sept	Oct	Nov	Dec	Jan	Feb	Mar	YTD	%
2005	18/79	34/98	43/109	50/119	33/94	58/111	38/116	40/100	26/78	35/99	24/75	30/90	429/1166	36.79%
2004	No previous data as this is a new BVPI													

Analysis

Yearly target	Will Authority achieve target? (Estimate using predictive trend)	Have current results improved since the same month last year?	Have current yearly results (including predictive trend) improved since last year?
No target set as no previous data	N/A	N/A	N/A

Commentary

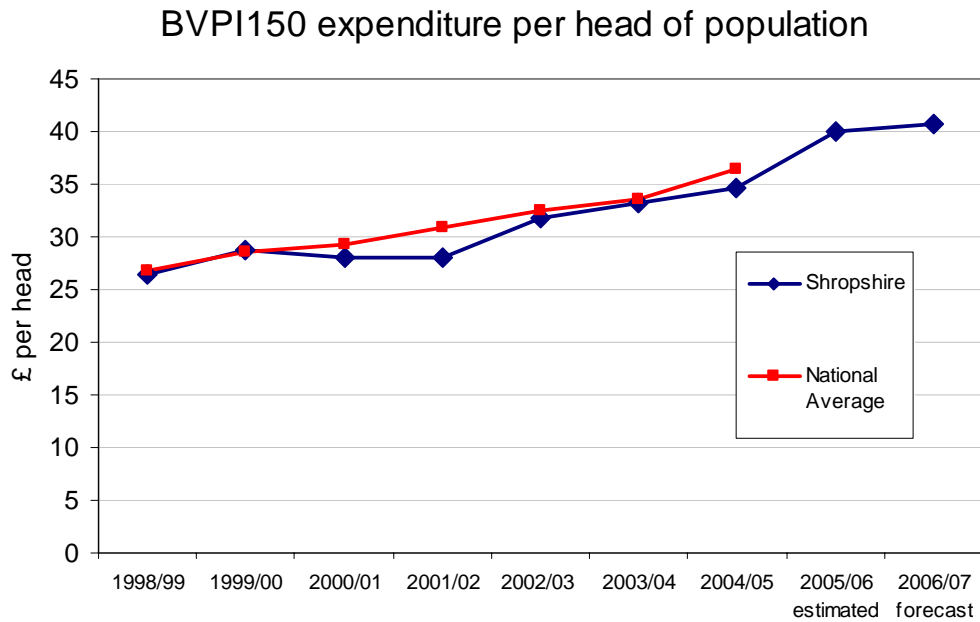
A target of 14.6% has been set for the 2006/07 reporting year, and monitoring against this target will appear in future reports.



150

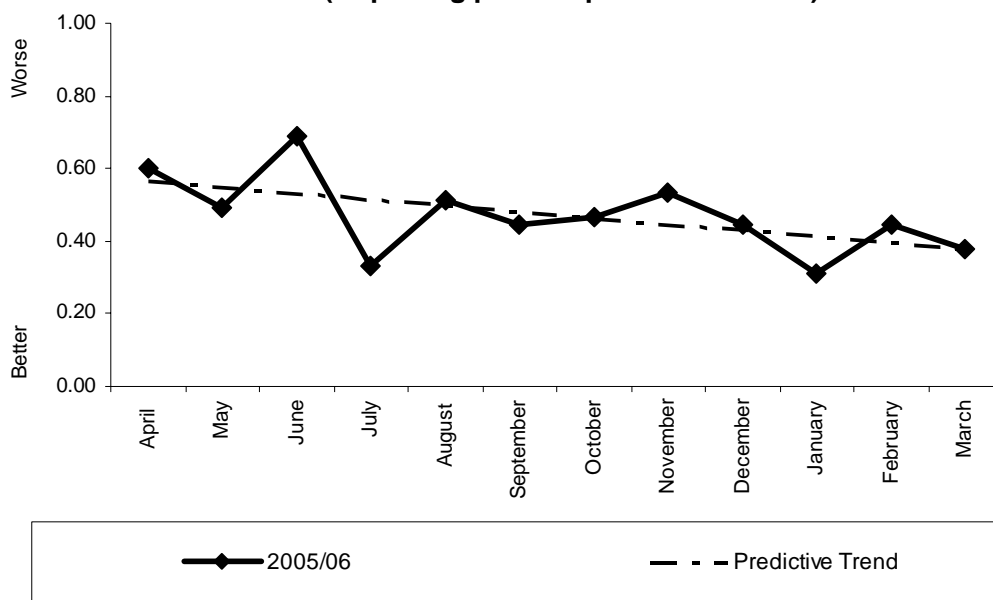
This BVPI is produced yearly and, as such, the data will not be ready for display until the end of the fourth quarter of the year. This is taken from the CIPFA statistics.

BVPI 150 concerns the expenditure per head of population on the provision of fire and rescue services. For information purposes, a graph of historic verified data is shown, with comparison made with the national average.



206(i)

The number of deliberate primary fires (excluding deliberate primary fires in vehicles) per 10,000 population
(Reporting period April 05 - March 06)



Monthly Stats (per 10,000 population)

	Apr	May	June	July	Aug	Sept	Oct	Nov	Dec	Jan	Feb	Mar	YTD
2005	0.60	0.49	0.69	0.33	0.51	0.45	0.47	0.53	0.45	0.31	0.45	0.38	5.66
2004	No previous data as this is a new BVPI												

Monthly Stats (actual incidents)

	Apr	May	June	July	Aug	Sept	Oct	Nov	Dec	Jan	Feb	Mar	YTD
2005	27	22	31	15	23	20	21	24	20	14	20	17	254
2004	No previous data as this is a new BVPI												

Analysis

Yearly target	Will Authority achieve target? (Estimate using predictive trend)	Have current results improved since the same month last year?	Have current yearly results (including predictive trend) improved since last year?
No target set as no previous data	N/A	N/A	N/A

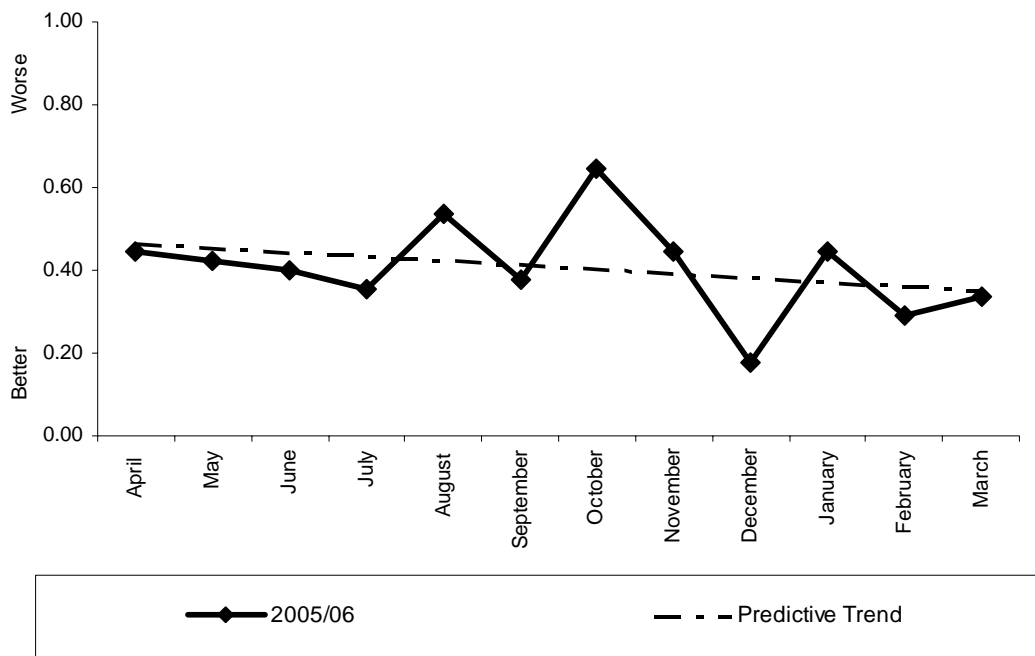
Commentary

A target of 5.6 has been set for the 2006/07 reporting year, and monitoring against this target will appear in future reports.



206(ii)

The number of deliberate primary fires in vehicles per 10,000 population
(Reporting period April 05 - March 06)



Monthly Stats (per 10,000 population)

	Apr	May	June	July	Aug	Sept	Oct	Nov	Dec	Jan	Feb	Mar	YTD
2005	0.45	0.42	0.40	0.36	0.53	0.38	0.65	0.45	0.18	0.45	0.29	0.33	4.88
2004	No previous data as this is a new BVPI												

Monthly Stats (actual incidents)

	Apr	May	June	July	Aug	Sept	Oct	Nov	Dec	Jan	Feb	Mar	YTD
2005	20	19	18	16	24	17	29	20	8	20	13	15	219
2004	No previous data as this is a new BVPI												

Analysis

Yearly target	Will Authority achieve target? (Estimate using predictive trend)	Have current results improved since the same month last year?	Have current yearly results (including predictive trend) improved since last year?
No target set as no previous data	N/A	N/A	N/A

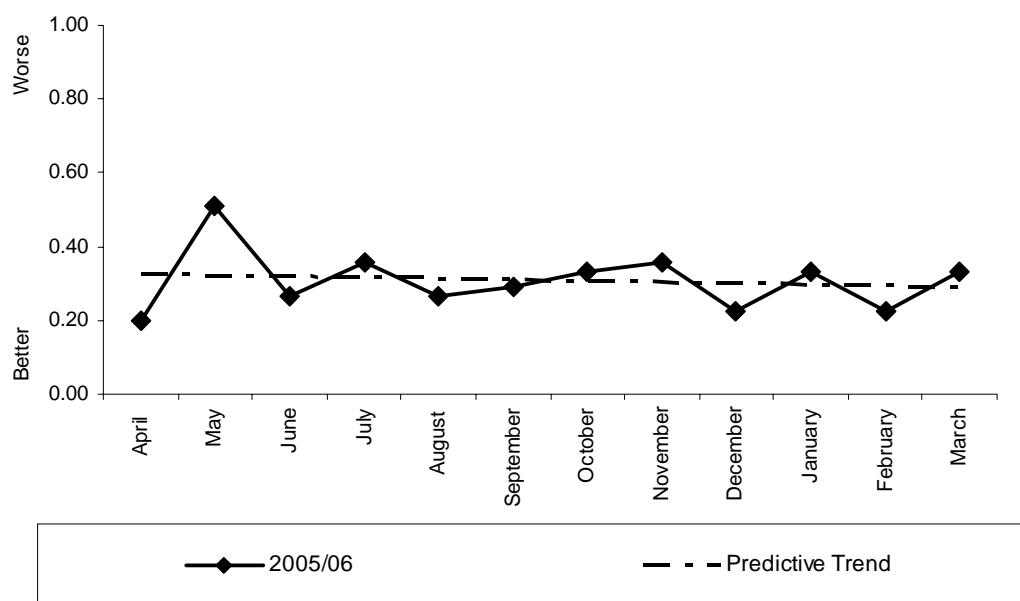
Commentary

A target of 4.84 has been set for the 2006/07 reporting year, and monitoring against this target will appear in future reports.



206(iii)

**The number of deliberate secondary fires (excluding deliberate secondary fires in vehicles) per 10,000 population
(Reporting period April 05 - March 06)**



Monthly Stats (per 10,000 population)

	Apr	May	June	July	Aug	Sept	Oct	Nov	Dec	Jan	Feb	Mar	YTD
2005	0.20	0.51	0.27	0.36	0.27	0.29	0.33	0.36	0.22	0.33	0.22	0.33	3.70
2004	No previous data as this is a new BVPI												

Monthly Stats (actual incidents)

	Apr	May	June	July	Aug	Sept	Oct	Nov	Dec	Jan	Feb	Mar	YTD
2005	9	23	12	16	12	13	15	16	10	15	10	15	166
2004	No previous data as this is a new BVPI												

Analysis

Yearly target	Will Authority achieve target? (Estimate using predictive trend)	Have current results improved since the same month last year?	Have current yearly results (including predictive trend) improved since last year?
No target set as no previous data	N/A	N/A	N/A

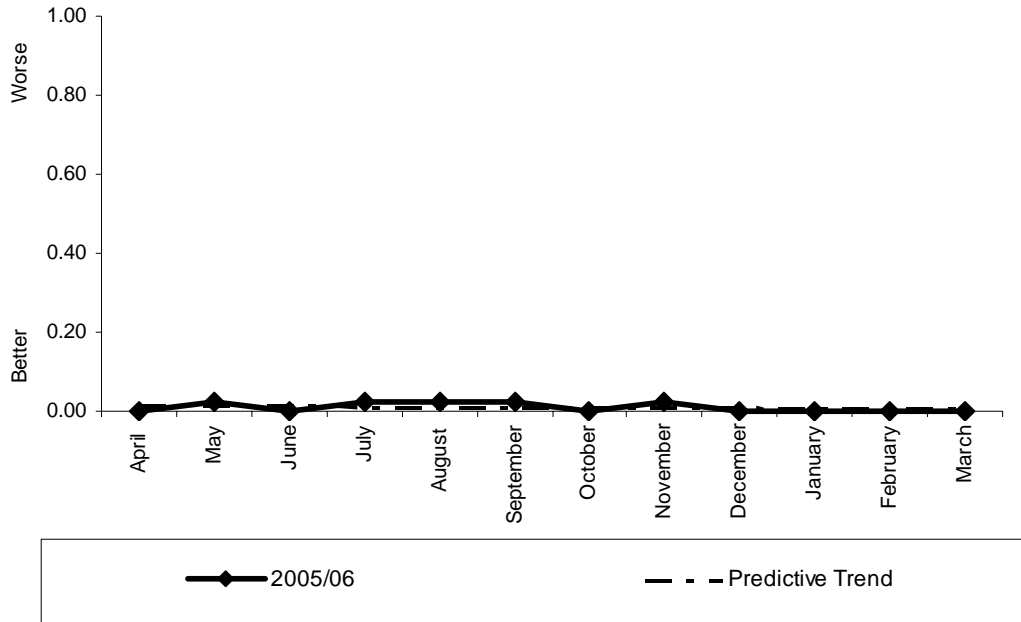
Commentary

A target of 3.6 has been set for the 2006/07 reporting year, and monitoring against this target will appear in future reports.



206(iv)

**The number of deliberate secondary fires in vehicles per 10,000 population
(Reporting period April 05 - March 06)**



Monthly Stats (per 10,000 population)

	Apr	May	June	July	Aug	Sept	Oct	Nov	Dec	Jan	Feb	Mar	YTD
2005	0.00	0.02	0.00	0.02	0.02	0.02	0.00	0.02	0.00	0.00	0.00	0.00	0.11
2004	No previous data as this is a new BVPI												

Monthly Stats (actual incidents)

	Apr	May	June	July	Aug	Sept	Oct	Nov	Dec	Jan	Feb	Mar	YTD
2005	0	1	0	1	1	1	0	1	0	0	0	0	5
2004	No previous data as this is a new BVPI												

Analysis

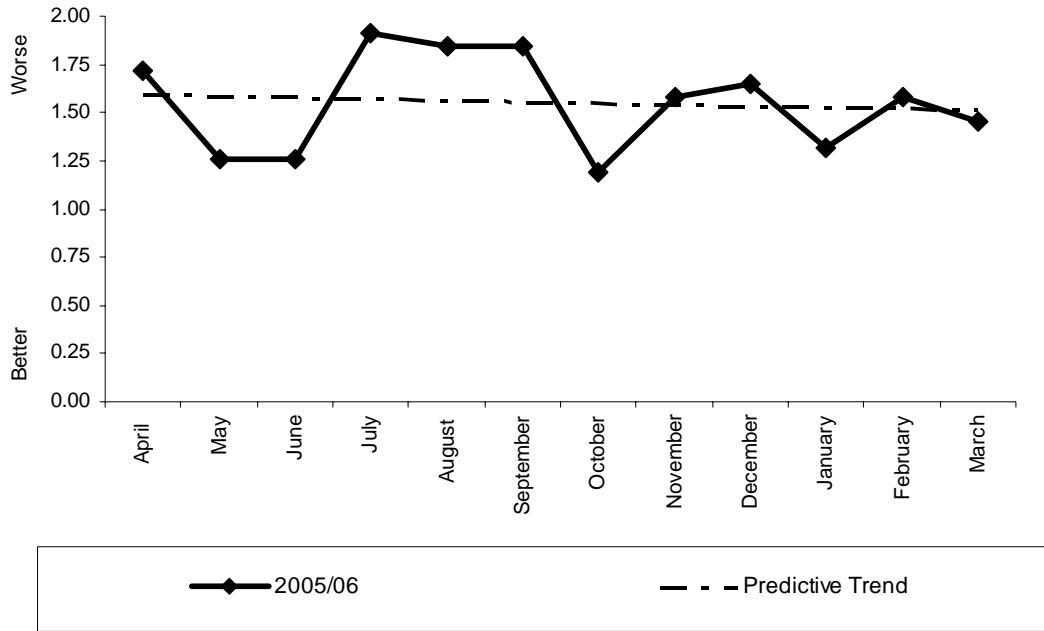
Yearly target	Will Authority achieve target? (Estimate using predictive trend)	Have current results improved since the same month last year?	Have current yearly results (including predictive trend) improved since last year?
No target set as no previous data	N/A	N/A	N/A

Commentary

A target of 0.1 has been set for the 2006/07 reporting year, and monitoring against this target will appear in future reports.



The number of fires in non-domestic premises per 1,000 non-domestic premises
(Reporting period April 05 - March 06)



Monthly Stats (per 10,000 population)

	Apr	May	June	July	Aug	Sept	Oct	Nov	Dec	Jan	Feb	Mar	YTD
2005	1.72	1.25	1.25	1.91	1.85	1.85	1.19	1.58	1.65	1.32	1.58	1.45	18.61
2004	No previous data as this is a new BVPI												

Monthly Stats (actual incidents)

	Apr	May	June	July	Aug	Sept	Oct	Nov	Dec	Jan	Feb	Mar	YTD
2005	26	19	19	29	28	28	18	24	25	20	24	22	282
2004	No previous data as this is a new BVPI												

Analysis

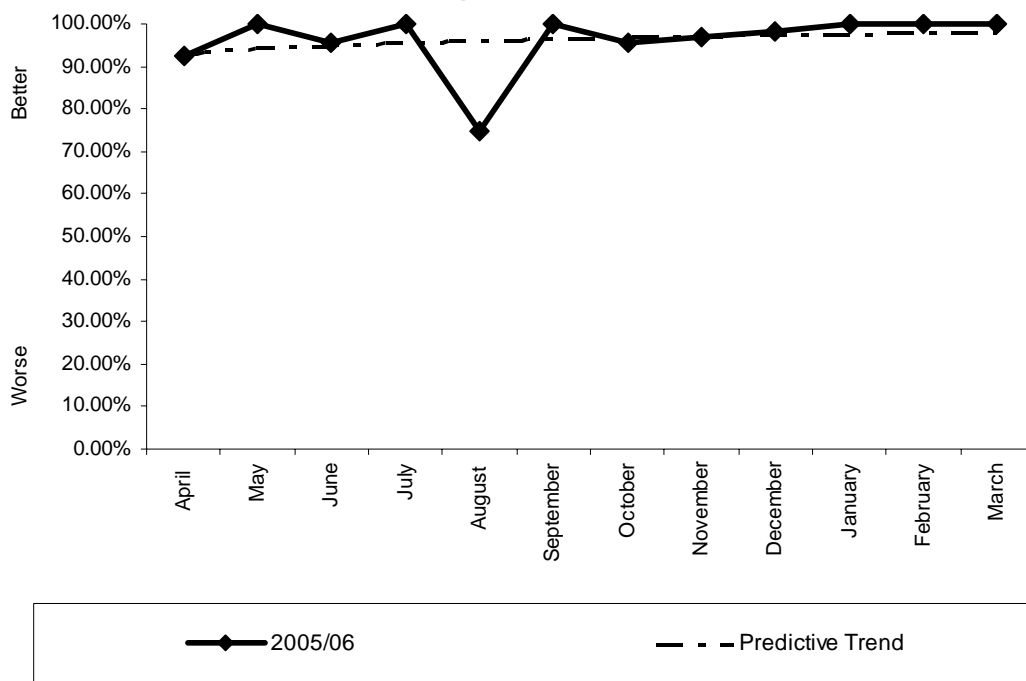
Yearly target	Will Authority achieve target? (Estimate using predictive trend)	Have current results improved since the same month last year?	Have current yearly results (including predictive trend) improved since last year?
No target set as no previous data	N/A	N/A	N/A

Commentary

A target of 18.0 has been set for the 2006/07 reporting year, and monitoring against this target will appear in future reports.



**The percentage of people in accidental dwelling fires who escaped unharmed without FRA assistance at the fire
(Reporting period April 05 - March 06)**



Monthly Stats (percentage)

	Apr	May	June	July	Aug	Sept	Oct	Nov	Dec	Jan	Feb	Mar
2005	92.31%	100%	95.56%	100%	75.00%	100%	95.65%	96.97%	98.04%	100%	100%	100%
2004	No previous data as this is a new BVPI											

Monthly Stats (people/total)

	Apr	May	June	July	Aug	Sept	Oct	Nov	Dec	Jan	Feb	Mar	YTD	%
2005	24/26	14/14	43/45	18/18	12/16	29/29	22/23	32/33	50/51	20/20	26/26	29/29	319/330	96.66
2004	No previous data as this is a new BVPI													

Analysis

Yearly target	Will Authority achieve target? (Estimate using predictive trend)	Have current results improved since the same month last year?	Have current yearly results (including predictive trend) improved since last year?
No target set as no previous data	N/A	N/A	N/A

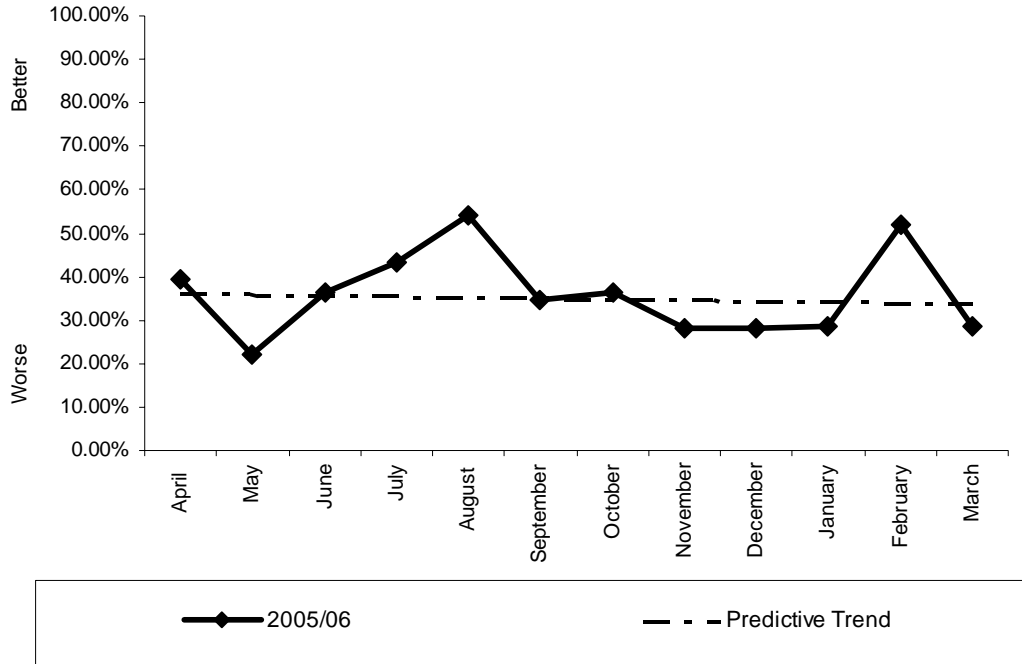
Commentary

A target of 95.97% has been set for the 2006/07 reporting year, and monitoring against this target will appear in future reports.



209(i)

The percentage of fires attended in dwellings where a smoke alarm had activated
(Reporting period April 05 - March 06)



Monthly Stats (percentage)

	Apr	May	June	July	Aug	Sept	Oct	Nov	Dec	Jan	Feb	Mar
2005	39.29%	22.22%	36.36%	43.48%	54.17%	34.62%	36.36%	28.13%	28.21%	28.57%	51.85%	28.57%
2004	No previous data as this is a new BVPI											

Monthly Stats (actual incidents/total dwelling fires)

	Apr	May	June	July	Aug	Sept	Oct	Nov	Dec	Jan	Feb	Mar	YTD	%
2005	11/28	4/18	12/33	10/23	13/24	9/26	8/22	9/32	11/39	6/21	14/27	8/28	115/321	35.83%
2004	No previous data as this is a new BVPI													

Analysis

Yearly target	Will Authority achieve target? (Estimate using predictive trend)	Have current results improved since the same month last year?	Have current yearly results (including predictive trend) improved since last year?
No target set as no previous data	N/A	N/A	N/A

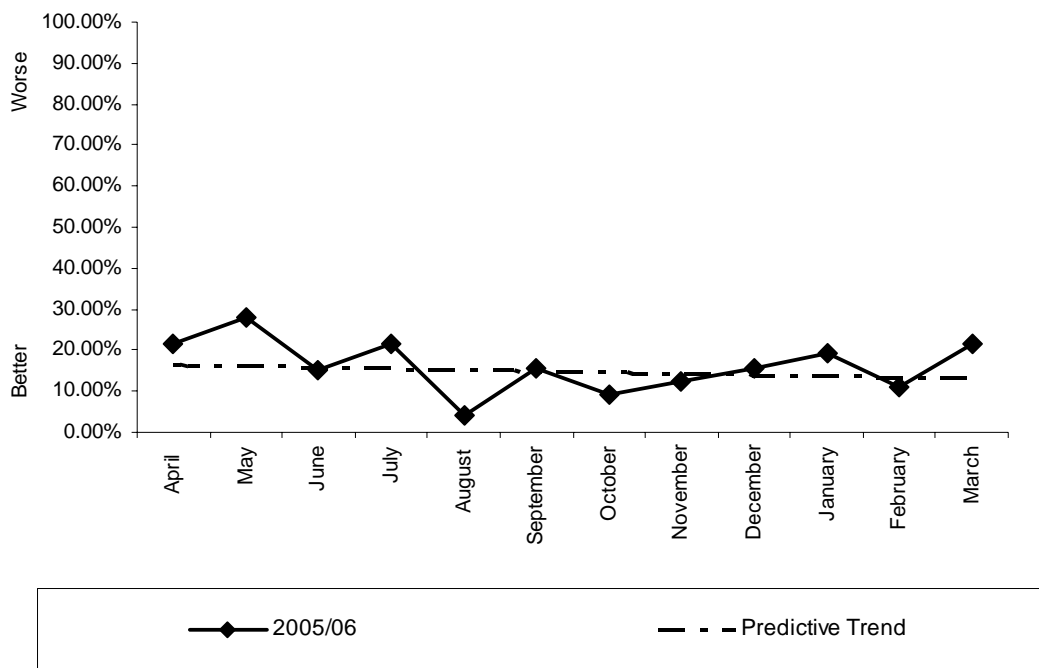
Commentary

A target of 48.0% has been set for the 2006/07 reporting year, and monitoring against this target will appear in future reports.



209(ii)

The percentage of fires attended in dwellings where a smoke alarm was fitted but did not activate
(Reporting period April 05 - March 06)



Monthly Stats (percentage)

	Apr	May	June	July	Aug	Sept	Oct	Nov	Dec	Jan	Feb	Mar
2005	21.43%	27.78%	15.15%	21.74%	4.17%	15.38%	9.09%	12.50%	15.38%	19.05%	11.11%	21.43%
2004	No previous data as this is a new BVPI											

Monthly Stats (actual incidents/total)

	Apr	May	June	July	Aug	Sept	Oct	Nov	Dec	Jan	Feb	Mar	YTD	%
2005	6/28	5/18	5/33	5/23	1/24	4/26	2/22	4/32	6/39	4/21	3/27	6/28	51/321	15.89%
2004	No previous data as this is a new BVPI													

Analysis

Yearly target	Will Authority achieve target? (Estimate using predictive trend)	Have current results improved since the same month last year?	Have current yearly results (including predictive trend) improved since last year?
No target set as no previous data	N/A	N/A	N/A

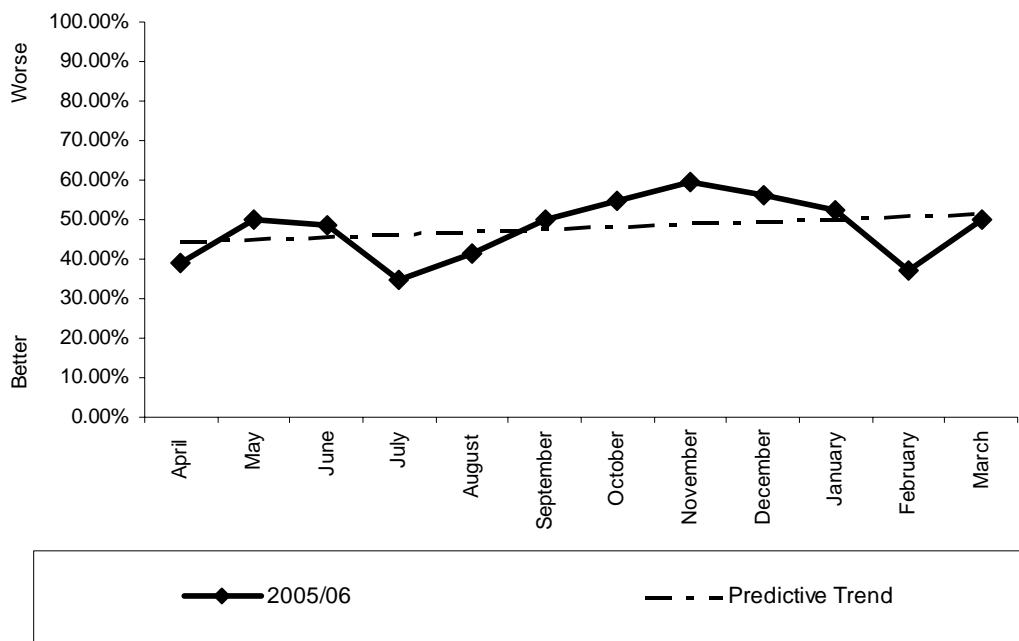
Commentary

A target of 14.0% has been set for the 2006/07 reporting year, and monitoring against this target will appear in future reports.



209(iii)

The percentage of fires attended in dwellings where no smoke alarm was fitted
(Reporting period April 05 - March 06)



Monthly Stats (percentage)

	Apr	May	June	July	Aug	Sept	Oct	Nov	Dec	Jan	Feb	Mar
2005	39.29%	50.00%	48.48%	34.78%	41.67%	50.00%	54.55%	59.38%	56.41%	52.38%	37.04%	50.00%
2004	No previous data as this is a new BVPI											

Monthly Stats (actual incidents/total)

	Apr	May	June	July	Aug	Sept	Oct	Nov	Dec	Jan	Feb	Mar	YTD	%
2005	11/28	9/18	16/33	8/23	10/24	13/26	12/22	19/32	22/39	11/21	10/27	14/28	155/321	48.29%
2004	No previous data as this is a new BVPI													

Analysis

Yearly target	Will Authority achieve target? (Estimate using predictive trend)	Have current results improved since the same month last year?	Have current yearly results (including predictive trend) improved since last year?
No target set as no previous data	N/A	N/A	N/A

Commentary

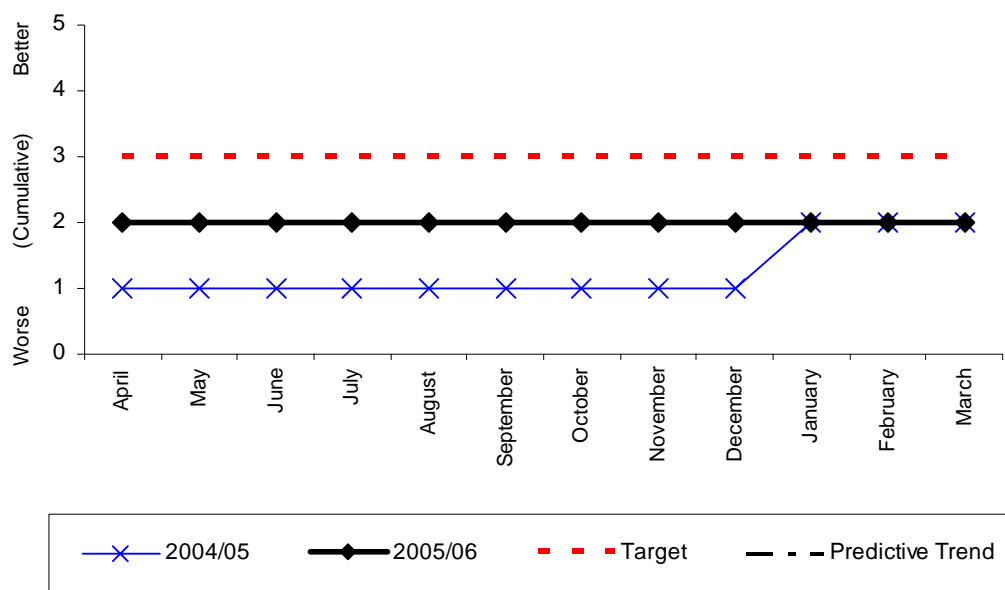
A target of 38.0% has been set for the 2006/07 reporting year, and monitoring against this target will appear in future reports.



Corporate Health Indicators

2a

**The equality standard for local government
(Reporting period Quarter 1 2005 - Quarter 4 2006)**



Monthly Stats (level)

	Apr	May	June	July	Aug	Sept	Oct	Nov	Dec	Jan	Feb	Mar
2005		2			2			2			2	
2004		1			1			1			2	

Monthly Stats (actual incidents)

	Apr	May	June	July	Aug	Sept	Oct	Nov	Dec	Jan	Feb	Mar
2005		-			-			-				
2004		-			-			-			-	

Analysis

Yearly target	Will Authority achieve target? (Estimate using predictive trend)	Have current results improved since the same month last year?	Have current yearly results (including predictive trend) improved since last year?
3	X	=	√

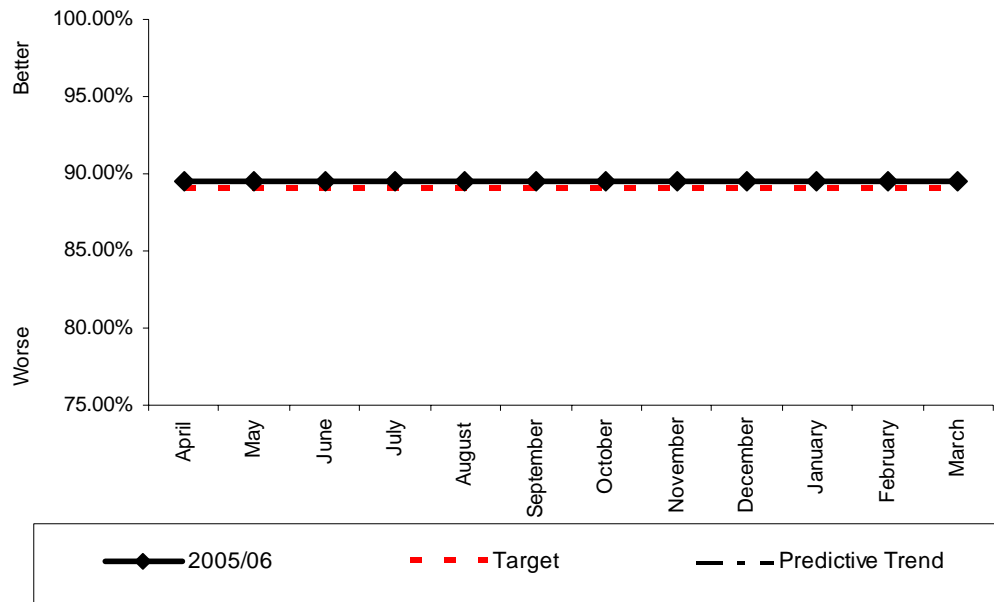
Commentary

This indicator has been reviewed and a decision made to consolidate current performance in the 2006/07 reporting year, therefore a target of Level 2 has been set, and will be reported and monitored in future reports, with the aim of Level 3 achievement in 2007/08.



2b

**The duty to promote race equality
(Reporting period Quarter 1 2005 - Quarter 4 2006)**



Monthly Stats (percentage)

	Apr	May	June	July	Aug	Sept	Oct	Nov	Dec	Jan	Feb	Mar
2005	89%			89%			89%			89%		
2004	No previous data as this is a new BVPI											

Monthly Stats (Out of 19 qualities)

	Apr	May	June	July	Aug	Sept	Oct	Nov	Dec	Jan	Feb	Mar
2005	17			17			17			17		
2004	No previous data as this is a new BVPI											

Analysis

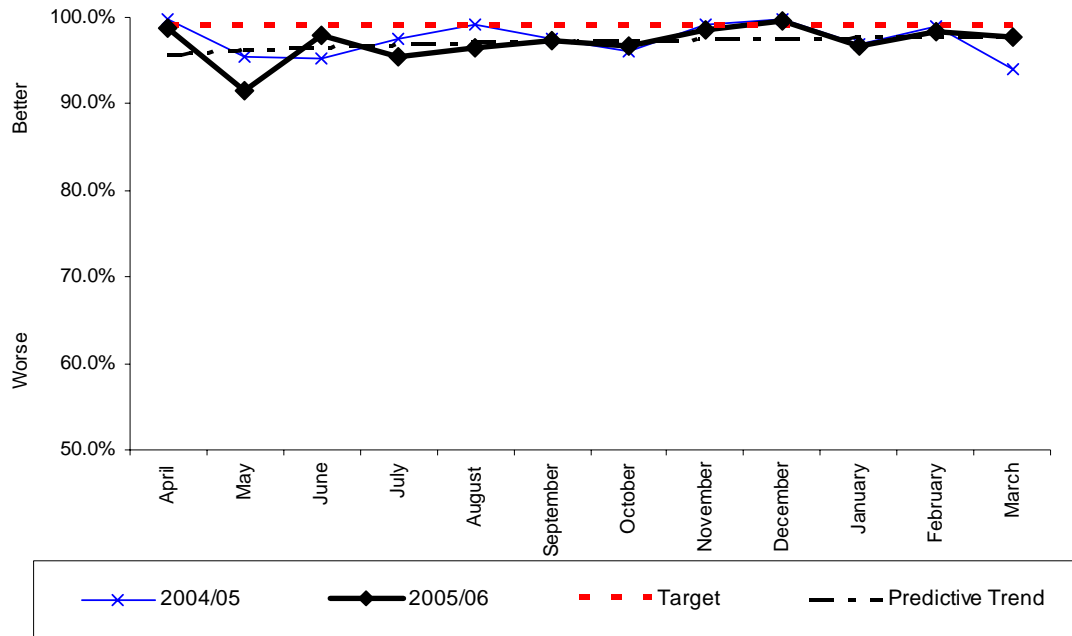
Yearly target	Will Authority achieve target? (Estimate using predictive trend)	Have current results improved since the same month last year?	Have current yearly results (including predictive trend) improved since last year?
89%	√	N/A	N/A

Commentary

--



**The percentage of undisputed invoices which were paid in 30 days
(Reporting period April 05 - March 06)**



Monthly Stats (percentage)

	Apr	May	June	July	Aug	Sept	Oct	Nov	Dec	Jan	Feb	Mar
2005	98.8%	91.4%	98.0%	95.5%	96.5%	97.3%	96.6%	98.5%	99.7%	96.6%	98.3%	97.6%
2004	99.7%	95.4%	95.3%	97.6%	99.2%	97.6%	96.0%	99.2%	99.7%	96.9%	99.0%	94.0%

Monthly Stats (invoices/total)

	Apr	May	June	July	Aug	Sept	Oct	Nov	Dec	Jan	Feb	Mar
2005	418/423	310/339	342/349	382/400	388/402	398/409	375/388	321/326	310/311	430/455	297/302	411/421
2004	Data not stored locally (to be requested from the County Council if desired)											

YTD	%
4382/4515	97.05%

Analysis

Yearly target	Will Authority achieve target? (Estimate using predictive trend)	Have current results improved since the same month last year?	Have current yearly results (including predictive trend) improved since last year?
99%	X	√	√

Commentary

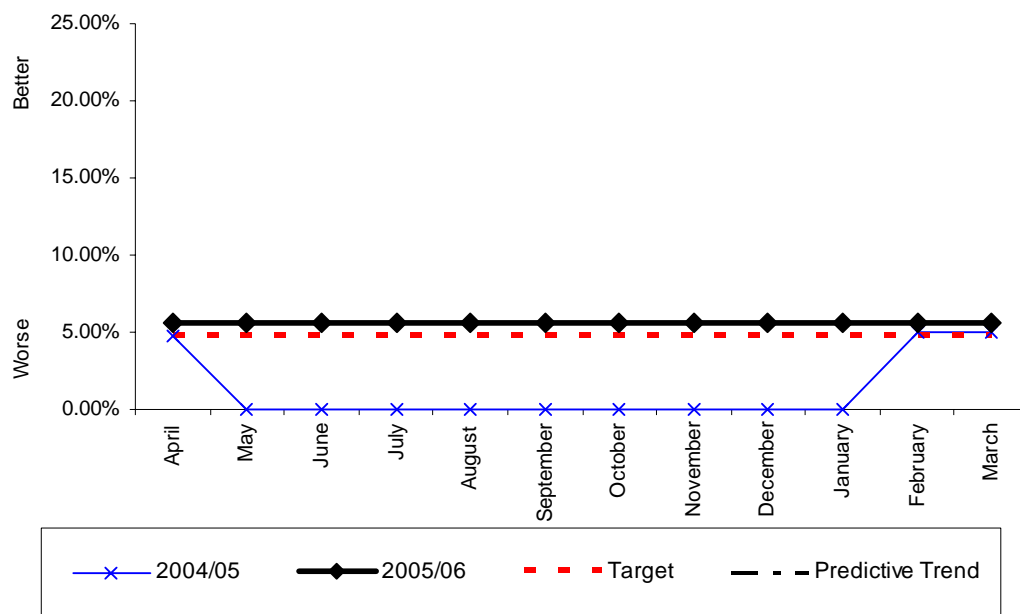
“The number of invoices for commercial goods and services within mutually agreed term or 30 days, if such terms do not exist”

Source ODPM Best Value Performance Indicators: 2005/06



11(i)

**The percentage of top 5% of earners that are women
(Reporting period April 04 - March 05)**



Monthly Stats (percentage)

	Apr	May	June	July	Aug	Sept	Oct	Nov	Dec	Jan	Feb	Mar
2005	5.56%	5.56%	5.56%	5.56%	5.56%	5.56%	5.56%	5.56%	5.56	5.56%	5.56%	5.56%
2004	4.76%	0%	0%	0%	0%	0%	0%	0%	0%	0%	5.00%	5.00%

Monthly Stats (people)

	Apr	May	June	July	Aug	Sept	Oct	Nov	Dec	Jan	Feb	Mar
2005	1	1	1	1	1	1	1	1	1	1	1	1
2004	1	0	0	0	0	0	0	0	0	0	1	1

Analysis

Yearly target	Will Authority achieve target? (Estimate using predictive trend)	Have current results improved since the same month last year?	Have current yearly results (including predictive trend) improved since last year?
4.7%	√	√	√

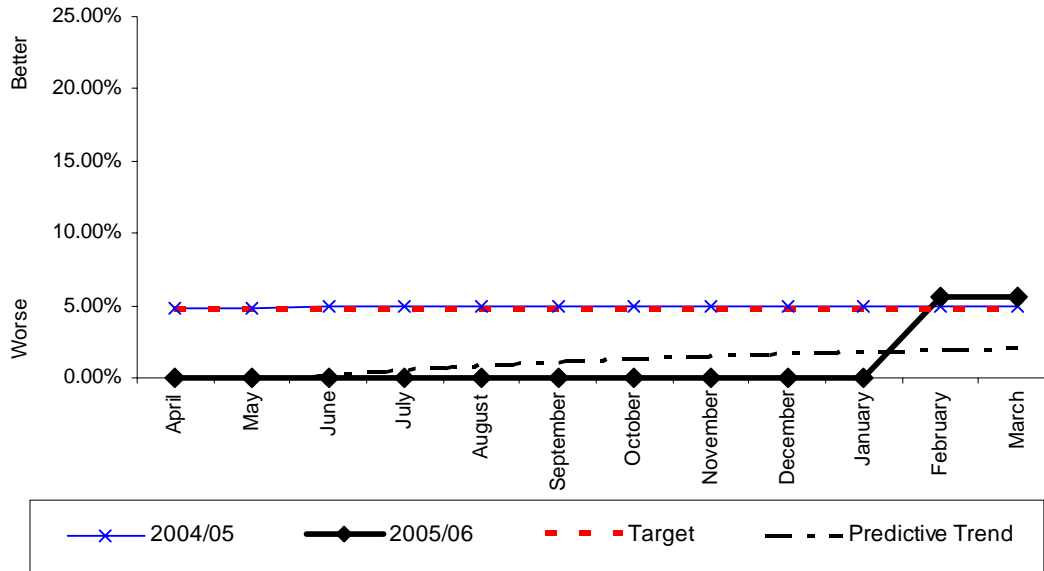
Commentary

The Fire Authority is currently reporting 18 staff within the top 5% earnings band, of which 1 is a woman. The top 5% threshold is being recalculated, and, therefore, this figure may change.



11(ii)

**The percentage of top 5% earners from ethnic minority communities
(Reporting period April 04 - March 06)**



Monthly Stats (percentage)

	Apr	May	June	July	Aug	Sept	Oct	Nov	Dec	Jan	Feb	Mar
2005	0%	0%	0%	0%	0%	0%	0%	0%	0%	0%	5.56%	5.56%
2004	4.76%	4.76%	5.00%	5.00%	5.00%	5.00%	5.00%	5.00%	5.00%	5.00%	5.00%	5.00%

Monthly Stats (people)

	Apr	May	June	July	Aug	Sept	Oct	Nov	Dec	Jan	Feb	Mar
2005	0	0	0	0	0	0	0	0	0	0	1	1
2004	1	1	1	1	1	1	1	1	1	1	1	1

Analysis

Yearly target	Will Authority achieve target? (Estimate using predictive trend)	Have current results improved since the same month last year?	Have current yearly results (including predictive trend) improved since last year?
4.7%	√	√	√

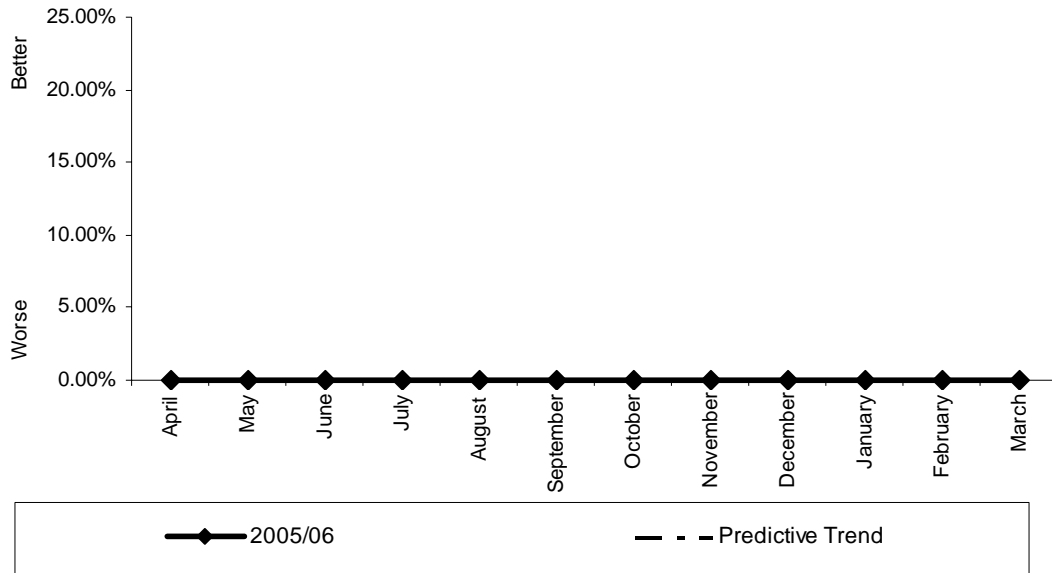
Commentary

The Authority is currently reporting 18 staff within the top 5% earnings band of which there is 1 classified as from an ethnic minority community. The top 5% threshold is being recalculated, and therefore this figure may change



11(iii)

**The percentage of top 5% earners that are disabled
(Reporting period April 05 - March 05)**



Monthly Stats (percentage)

	Apr	May	June	July	Aug	Sept	Oct	Nov	Dec	Jan	Feb	Mar
2005	0%	0%	0%	0%	0%	0%	0%	0%	0%	0%	0%	0%
2004	No previous data as this is a new BVPI											

Monthly Stats (people)

	Apr	May	June	July	Aug	Sept	Oct	Nov	Dec	Jan	Feb	Mar
2005	0	0	0	0	0	0	0	0	0	0	0	0
2004	No previous data as this is a new BVPI											

Analysis

Yearly target	Will Authority achieve target? (Estimate using predictive trend)	Have current results improved since the same month last year?	Have current yearly results (including predictive trend) improved since last year?
No target set as no previous data	N/A	N/A	N/A

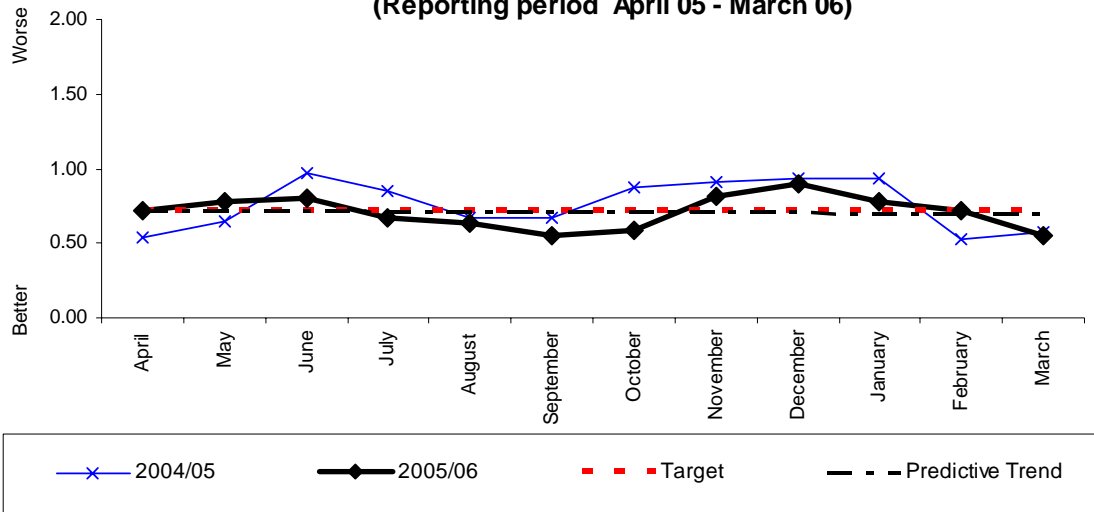
Commentary

The Fire Authority is currently reporting 18 staff within the top 5% earnings band of which none is classified as disabled. The top 5% threshold is being recalculated, and, therefore, this figure may change



12(i)

The proportion of working days/shifts lost due to sickness absence by wholetime uniformed staff
(Reporting period April 05 - March 06)



Monthly Stats (days)

	Apr	May	June	July	Aug	Sept	Oct	Nov	Dec	Jan	Feb	Mar	YTD
2005	0.71	0.78	0.81	0.67	0.64	0.55	0.59	0.82	0.89	0.78	0.72	0.55	8.49
2004	0.54	0.65	0.97	0.85	0.67	0.67	0.88	0.91	0.93	0.93	0.53	0.57	9.09

Monthly Stats (actual)

	Apr	May	June	July	Aug	Sept	Oct	Nov	Dec	Jan	Feb	Mar	YTD
2005	163	177	187	152	145	125	134	186	204	177	164	125	1939
2004	114	136	204	179	139	142	186	193	197	197	112	121	1920

Analysis

Yearly target	Will Authority achieve target? (Estimate using predictive trend)	Have current results improved since the same month last year?	Have current yearly results (including predictive trend) improved since last year?
8.6	√	X	X

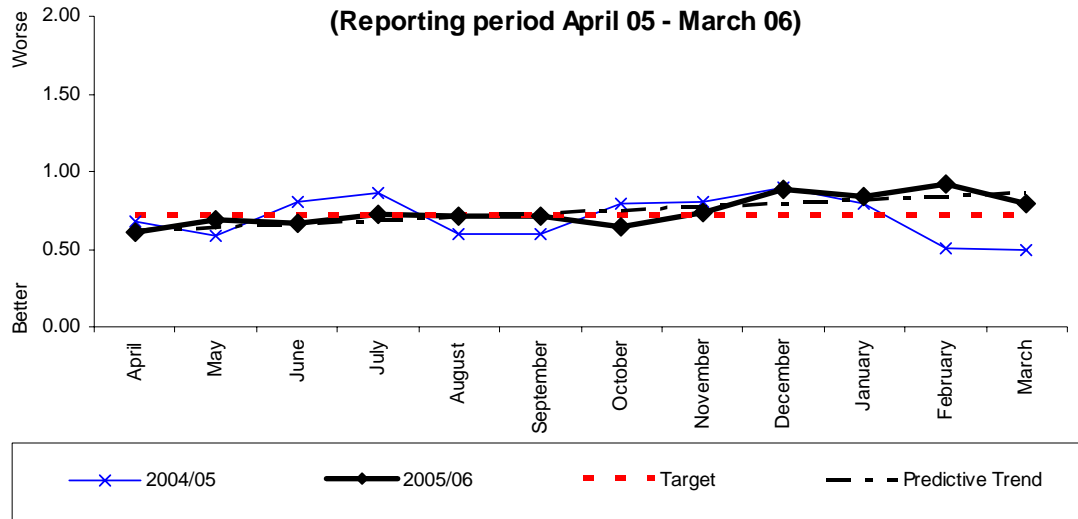
Commentary



12(ii)

The proportion of working days/shifts lost due to sickness absence by all staff

(Reporting period April 05 - March 06)



Monthly Stats (days)

	Apr	May	June	July	Aug	Sept	Oct	Nov	Dec	Jan	Feb	Mar	YTD
2005	0.60	0.69	0.67	0.72	0.71	0.71	0.65	0.74	0.89	0.84	0.92	0.80	8.93
2004	0.68	0.59	0.81	0.86	0.60	0.60	0.79	0.80	0.90	0.80	0.51	0.50	8.42

Monthly Stats (actual)

	Apr	May	June	July	Aug	Sept	Oct	Nov	Dec	Jan	Feb	Mar	YTD
2005	171	194	194	205	200	202	183	209	251	237	259	225	2530
2004	190	165	225	239	168	169	223	227	255	226	144	141	2372

Analysis

Yearly target	Will Authority achieve target? (Estimate using predictive trend)	Have current results improved since the same month last year?	Have current yearly results (including predictive trend) improved since last year?
8.6	X	X	X

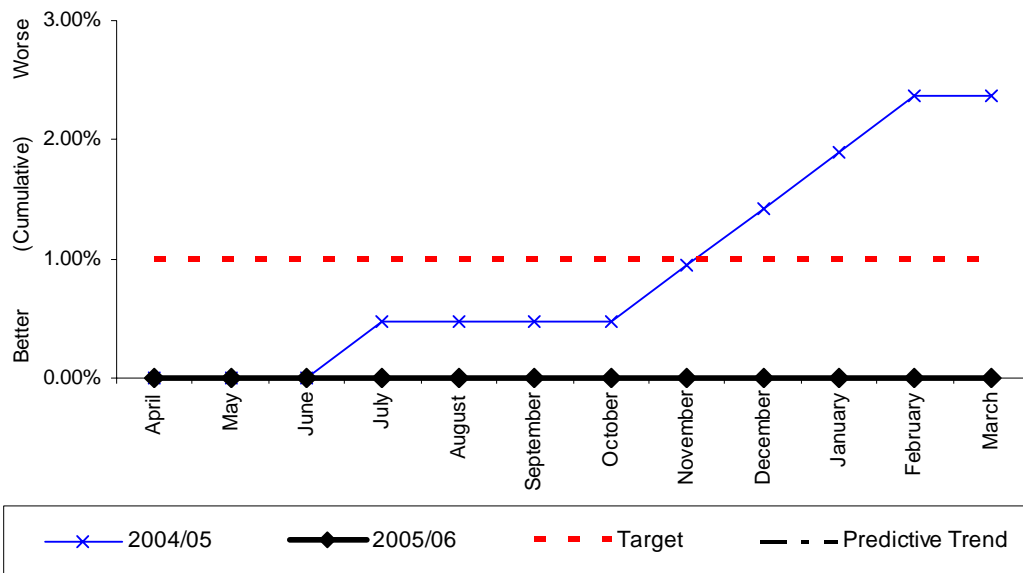
Commentary

During the reporting year, there have been 4 members of non-uniformed staff on long-term sick leave, with 3 of these still absent from work at the end of the reporting year.



15(i)

**Wholetime fire-fighter ill-health retirements as a percentage of the total workforce
(Reporting period April 05 - March 06)**



Monthly Stats (percentage)

	Apr	May	June	July	Aug	Sept	Oct	Nov	Dec	Jan	Feb	Mar	YTD
2005	0%	0%	0%	0%	0%	0%	0%	0%	0%	0%	0%	0%	0%
2004	0%	0%	0%	0.48%	0%	0%	0%	0.47%	0.47%	0.47%	0.47%	0%	2.36%

Monthly Stats (people)

	Apr	May	June	July	Aug	Sept	Oct	Nov	Dec	Jan	Feb	Mar	YTD
2005	0	0	0	0	0	0	0	0	0	0	0	0	0
2004	0	0	0	1	0	0	0	1	1	1	1	0	4

Analysis

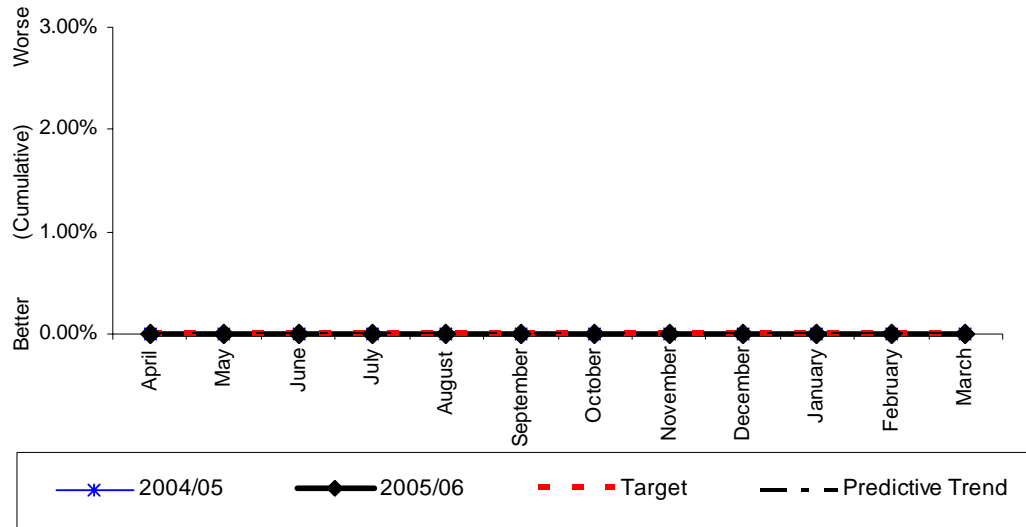
Yearly target	Will Authority achieve target? (Estimate using predictive trend)	Have current results improved since the same month last year?	Have current yearly results (including predictive trend) improved since last year?
1.0%	√	√	√

Commentary



15(ii)

**Control and non-uniformed ill-health retirements as a percentage of the total workforce
(Reporting period April 05 - March 06)**



Monthly Stats (percentage)

	Apr	May	June	July	Aug	Sept	Oct	Nov	Dec	Jan	Feb	Mar	YTD
2005	0%	0%	0%	0%	0%	0%	0%	0%	0%	0%	0%	0%	0%
2004	0%	0%	0%	0%	0%	0%	0%	0%	0%	0%	0%	0%	0%

Monthly Stats (people)

	Apr	May	June	July	Aug	Sept	Oct	Nov	Dec	Jan	Feb	Mar	YTD
2005	0	0	0	0	0	0	0	0	0	0	0	0	0
2004	0	0	0	0	0	0	0	0	0	0	0	0	0

Analysis

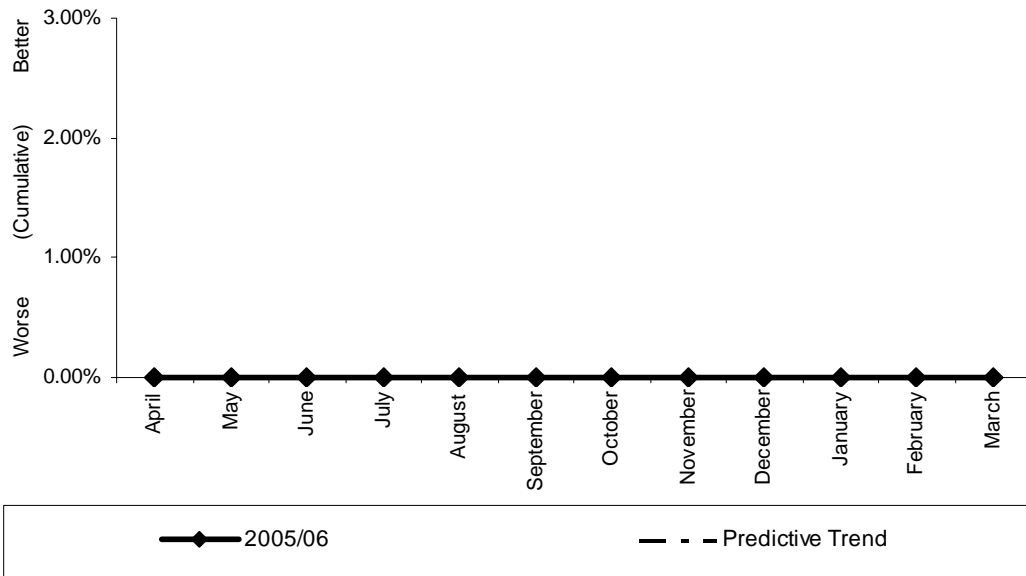
Yearly target	Will Authority achieve target? (Estimate using predictive trend)	Have current results improved since the same month last year?	Have current yearly results (including predictive trend) improved since last year?
0	√	=	=

Commentary



16a(i)

The percentage of wholetime and retained duty system employees with a disability
(Reporting period April 05 - March 06)



Monthly Stats (percentage)

	Apr	May	June	July	Aug	Sept	Oct	Nov	Dec	Jan	Feb	Mar
2005	0%	0%	0%	0%	0%	0%	0%	0%	0%	0%	0%	0%
2004	No previous data as this is a new BVPI											

Monthly Stats (people)

	Apr	May	June	July	Aug	Sept	Oct	Nov	Dec	Jan	Feb	Mar
2005	0	0	0	0	0	0	0	0	0	0	0	0
2004	No previous data as this is a new BVPI											

Analysis

Yearly target	Will Authority achieve target? (Estimate using predictive trend)	Have current results improved since the same month last year?	Have current yearly results (including predictive trend) improved since last year?
No target set as no previous data	N/A	N/A	N/A

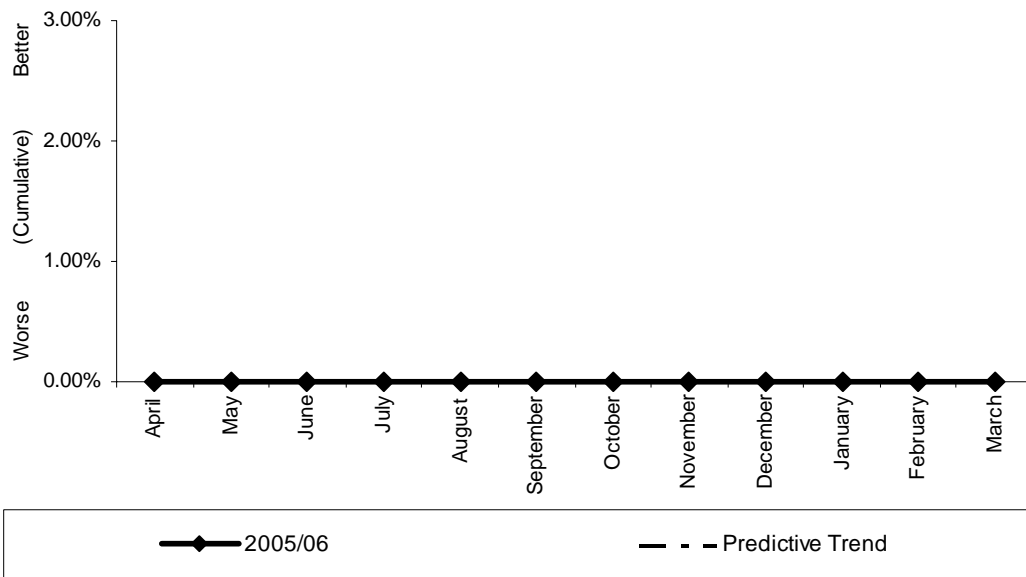
Commentary

A target of 0.5% has been set for the 2006/07 reporting year, and monitoring against this target will appear in future reports.



16a(ii)

**The percentage of control and non-uniformed employees with a disability
(Reporting period April 05 - March 06)**



Monthly Stats (percentage)

	Apr	May	June	July	Aug	Sept	Oct	Nov	Dec	Jan	Feb	Mar
2005	0%	0%	0%	0%	0%	0%	0%	0%	0%	0%	0%	0%
2004	No previous data as this is a new BVPI											

Monthly Stats (people)

	Apr	May	June	July	Aug	Sept	Oct	Nov	Dec	Jan	Feb	Mar
2005	0	0	0	0	0	0	0	0	0	0	0	0
2004	No previous data as this is a new BVPI											

Analysis

Yearly target	Will Authority achieve target? (Estimate using predictive trend)	Have current results improved since the same month last year?	Have current yearly results (including predictive trend) improved since last year?
No target set as no previous data	N/A	N/A	N/A

Commentary

A target of 0.75% has been set for the 2006/07 reporting year, and monitoring against this target will appear in future reports.



16b

BVPI 16b concerns the percentage of the economically active population (aged 18-64) in the Fire Authority area, who have a disability.

This percentage is 14.39%.

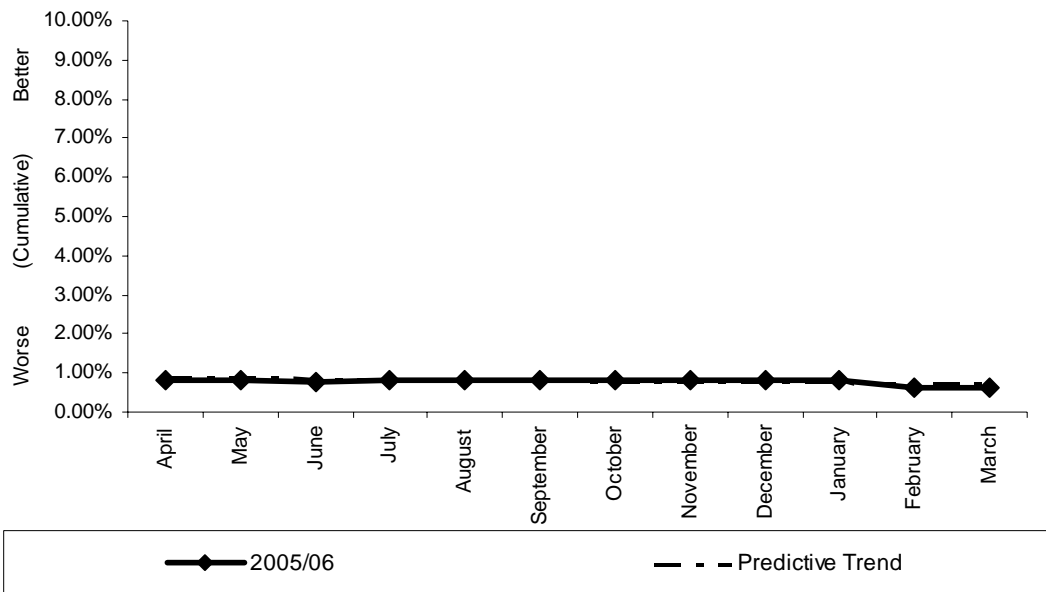
38,050 people out of 264,510 that are economically active in the Authority area have a disability.

Source: 2001 Census, [Key Statistics for Local Authorities]. Crown copyright 2004. Crown copyright material is reproduced with the permission of the Controller of HMSO.



17a

**The percentage of uniformed staff from ethnic minority communities
(Reporting period April 05 - March 06)**



Monthly Stats (percentage)

	Apr	May	June	July	Aug	Sept	Oct	Nov	Dec	Jan	Feb	Mar
2005	1.0%	1.0%	1.0%	0.8%	0.8%	0.8%	0.8%	0.8%	0.8%	0.8%	0.6%	0.6%
2004	No previous data as this is a new BVPI											

Monthly Stats (people)

	Apr	May	June	July	Aug	Sept	Oct	Nov	Dec	Jan	Feb	Mar
2005	5	5	5	4	4	4	4	4	4	4	3	3
2004	No previous data as this is a new BVPI											

Analysis

Yearly target	Will Authority achieve target? (Estimate using predictive trend)	Have current results improved since the same month last year?	Have current yearly results (including predictive trend) improved since last year?
No target set as no previous data	N/A	N/A	N/A

Commentary

A target of 1.15% has been set for the 2006/07 reporting year, and monitoring against this target will appear in future reports.



17b

BVPI 17b concerns the percentage of economically active population (aged 18-54 representing uniformed staffing age) from ethnic minority communities in the Fire and Rescue Service area.

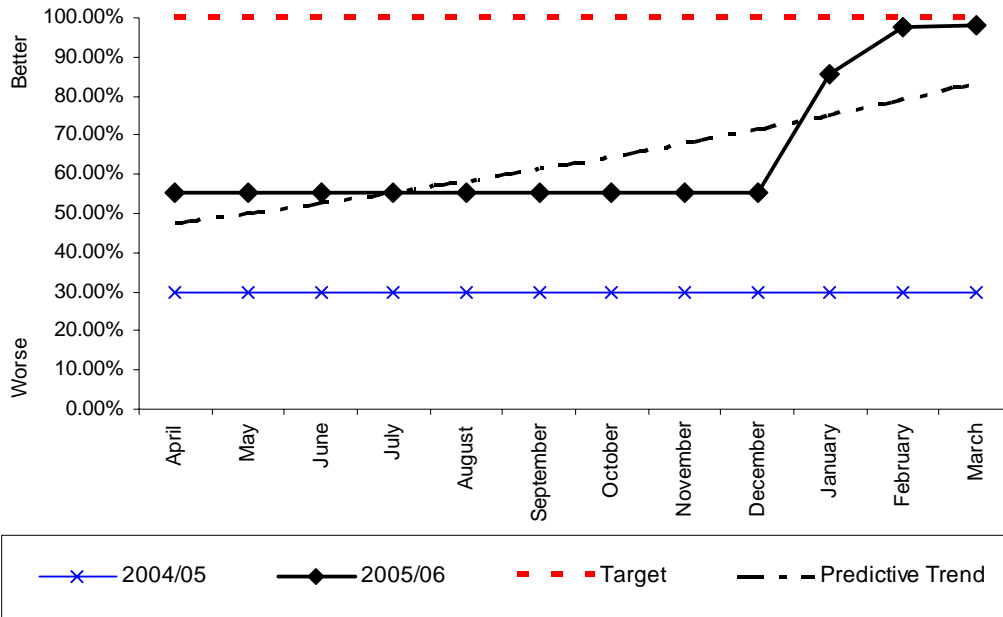
This percentage is 2.85%.

6,209 people out of 217,905 economically active people in the Fire Authority area are from ethnic minority communities.

Source: 2001 Census, [Key Statistics for Local Authorities]. Crown copyright 2004. Crown copyright material is reproduced with the permission of the Controller of HMSO.



**The number of types of interactions that are enabled for e-delivery as a percentage of the types of interactions that are legally permissible for e-delivery
(Reporting period Quarter 1 2005 - Quarter 4 2006)**



Monthly Stats (quarterly percentage)

	Apr	May	June	July	Aug	Sept	Oct	Nov	Dec	Jan	Feb	Mar
2005	50.7%			55.07			55.07%			98.04%		
2004	30.0%			30.0%			30.0%			50.7%		

Monthly Stats (quarterly interactions/total)

	Apr	May	June	July	Aug	Sept	Oct	Nov	Dec	Jan	Feb	Mar
2005	38/69			38/68			38/68			50/51		
2004	20.7/69			20.7/69			20.7/69			38/69		

Analysis

Yearly target	Will Authority achieve target? (Estimate using predictive trend)	Have current results improved since the same month last year?	Have current yearly results (including predictive trend) improved since last year?
100%	X	√	√

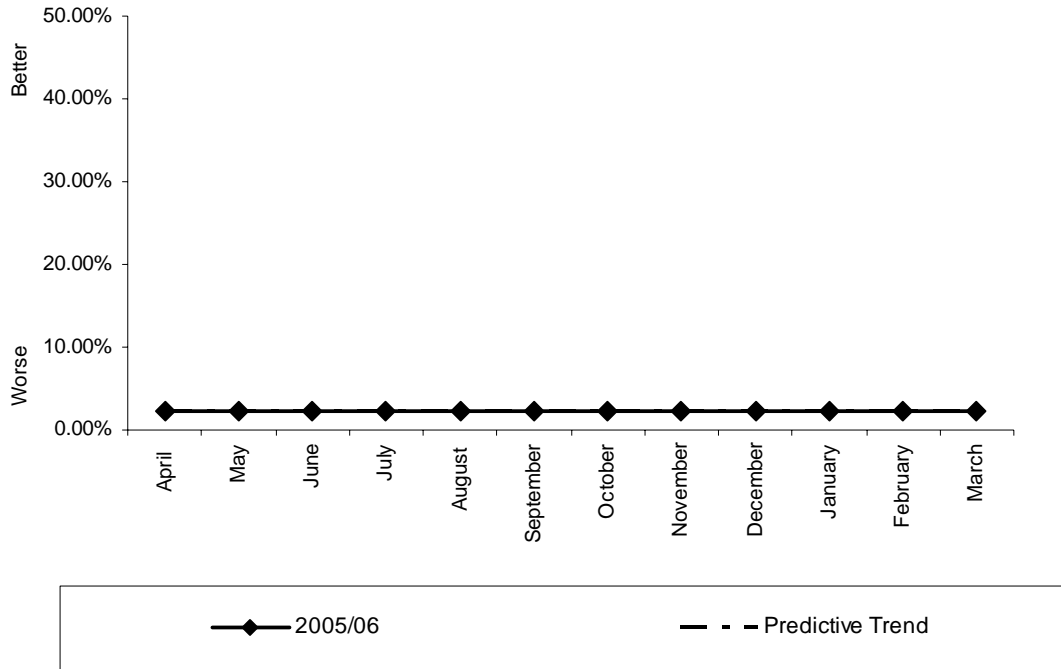
Commentary

Our final outturn is against 51 possible interactions, with 98.04% complete, after measures taken to achieve by March 2006. This indicator will no longer be reported on as the National Portal will be the electronic transaction tool, and has not yet been requested for the 2005/06 ODPM Annual Returns, with their guidance stating:

“This return has been removed while consideration is being given to what F&RSs should be providing for 2005/06.”



**The percentage of women firefighters
(Reporting period April 05 - March 06)**



Monthly Stats (percentage)

	Apr	May	June	July	Aug	Sept	Oct	Nov	Dec	Jan	Feb	Mar
2005	2.27%	2.27%	2.25%	2.27%	2.27%	2.27%	2.27%	2.27%	2.27%	2.27%	2.27%	2.27%
2004	No previous data as this is a new BVPI											

Monthly Stats (people)

	Apr	May	June	July	Aug	Sept	Oct	Nov	Dec	Jan	Feb	Mar
2005	9	9	9	9	9	9	9	9	9	9	9	9
2004	No previous data as this is a new BVPI											

Analysis

Yearly target	Will Authority achieve target? (Estimate using predictive trend)	Have current results improved since the same month last year?	Have current yearly results (including predictive trend) improved since last year?
No target set as no previous data	N/A	N/A	N/A

Commentary

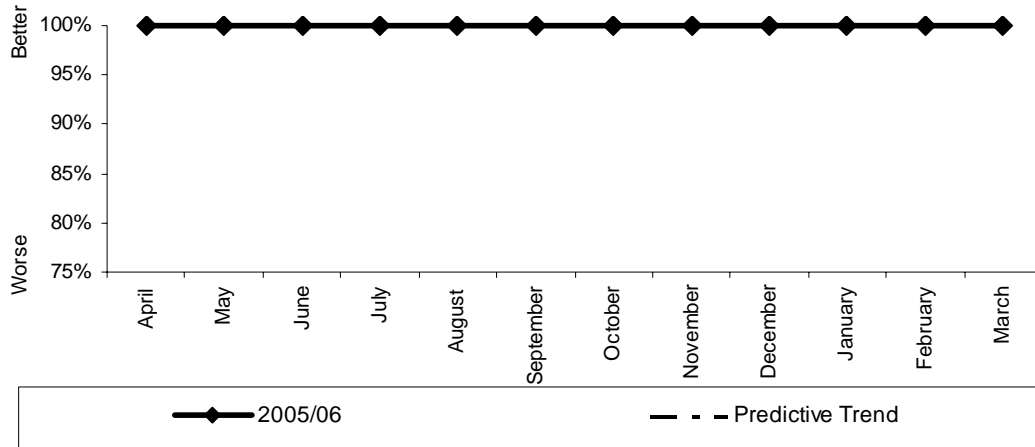
A target of 3.4% has been set for the 2006/07 reporting year, and monitoring against this target will appear in future reports.



BVPs no longer required by the Government (July 2005)

145(i)

**The percentage of incidents at which the number of appliances met the standards of fire cover
 (Reporting period April 05 - March 06)**



Monthly Stats (percentage)

	Apr	May	June	July	Aug	Sept	Oct	Nov	Dec	Jan	Feb	Mar
2005	100%	100%	100%	100%	100%	100%	100%	100%	100%	100%	100%	100%
2004	100%	100%	100%	100%	100%	100%	100%	100%	100%	100%	100%	100%

Monthly Stats (actual incidents)

	Apr	May	June	July	Aug	Sept	Oct	Nov	Dec	Jan	Feb	Mar	YTD	%
2005	173	175	207	229	196	221	202	205	184	177	184	182	2335	100%
2004	150	179	179	221	242	234	215	194	161	175	172	174	2296	100%

Analysis

Yearly target	Will Authority achieve target? (Estimate using predictive trend)	Have current results improved since the same month last year?	Have current yearly results (including predictive trend) improved since last year?
No target set as BVPI deleted	N/A	N/A	N/A

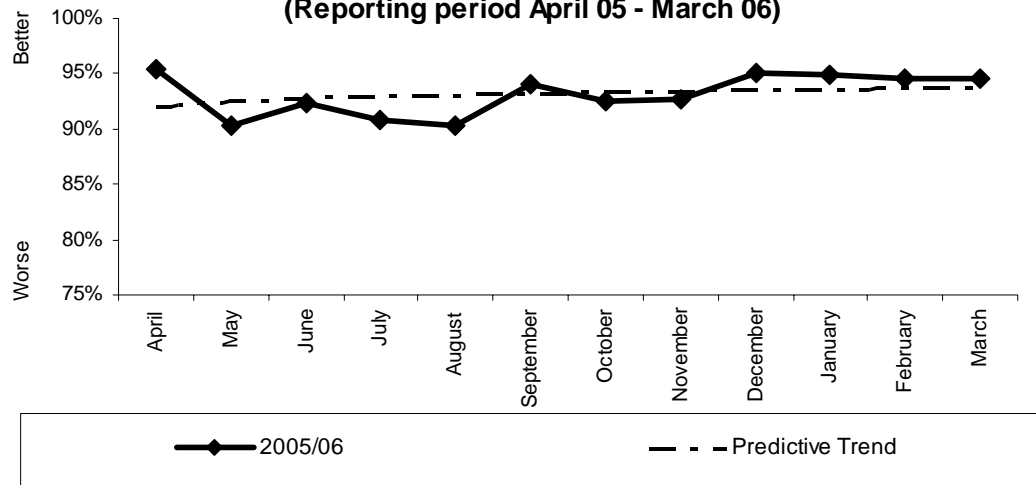
Commentary

Local standards of fire cover are to be adopted within the coming reporting year.



145(ii)

The percentage of incidents at which the number of riders met the standards of fire cover
(Reporting period April 05 - March 06)



Monthly Stats (percentage)

	Apr	May	June	July	Aug	Sept	Oct	Nov	Dec	Jan	Feb	Mar
2005	95.38%	90.29%	92.27%	90.83%	90.31%	94.12%	92.57%	92.68%	95.11%	94.92%	94.57%	94.51%
2004	90.6%	91.6%	89.9%	89.1%	92.6%	93.2%	93.1%	97.4%	92.5%	94.3%	92.4%	95.4%

Monthly Stats (actual incidents)

	Apr	May	June	July	Aug	Sept	Oct	Nov	Dec	Jan	Feb	Mar
2005	165/173	158/175	191/201	208/229	177/196	208/221	187/202	190/205	175/184	168/177	174/184	172/182
2004	136/150	164/179	161/179	196/221	224/242	218/234	201/215	188/194	149/161	165/175	159/172	166/174

	YTD	%
2005	2173/2335	93.1%
2004	2127/2296	92.6%

Analysis

Yearly target	Will Authority achieve target? (Estimate using predictive trend)	Have current results improved since the same month last year?	Have current yearly results (including predictive trend) improved since last year?
No target set as BVPI deleted	N/A	N/A	N/A

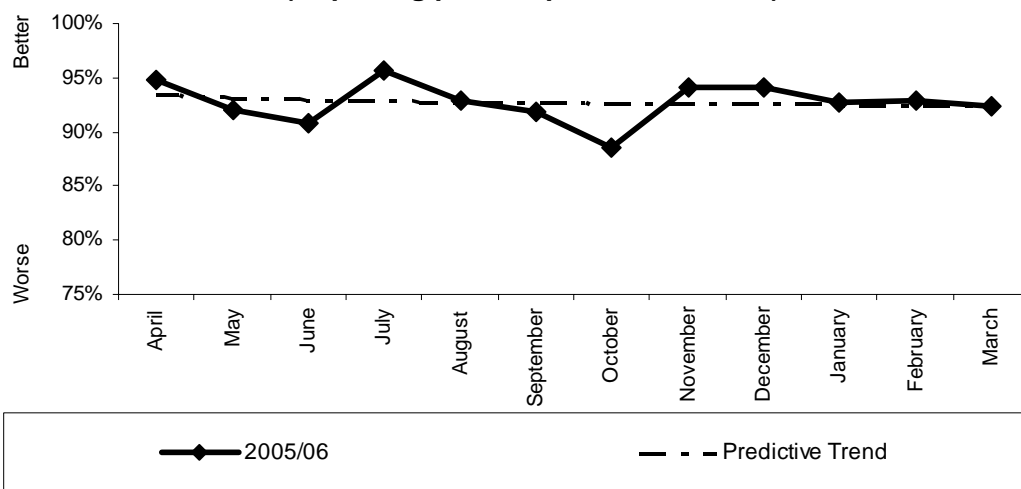
Commentary

Local standards of fire cover are to be adopted within the coming reporting year.



145(iii)

The percentage of incidents at which the attendance times met the standards of fire cover
(Reporting period April 05 - March 06)



Monthly Stats (percentage)

	Apr	May	June	July	Aug	Sept	Oct	Nov	Dec	Jan	Feb	Mar
2005	94.80%	92.00%	90.82%	95.63%	92.86%	91.86%	88.61%	94.15%	94.02%	92.66%	92.93%	92.31%
2004	96.0%	93.8%	96.5%	95.0%	94.6%	94.0%	91.2%	92.2%	91.3%	93.1%	94.8%	92.0%

Monthly Stats (actual incidents)

	Apr	May	June	July	Aug	Sept	Oct	Nov	Dec	Jan	Feb	Mar
2005	164/173	161/175	188/207	219/229	182/196	203/221	179/202	193/205	173/184	164/177	171/184	168/182
2004	143/150	168/179	173/179	210/221	229/242	220/234	197/215	178/194	147/161	163/175	163/172	160/174

	YTD	%
2005	2165/2335	92.7%
2004	2161/2296	94.1%

Analysis

Yearly target	Will Authority achieve target? (Estimate using predictive trend)	Have current results improved since the same month last year?	Have current yearly results (including predictive trend) improved since last year?
No target set as BVPI deleted	N/A	N/A	N/A

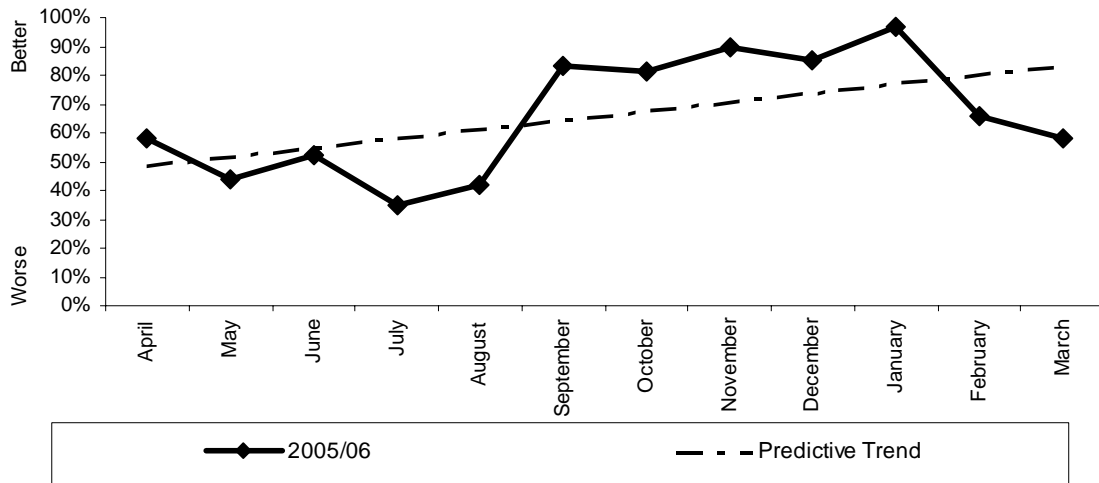
Commentary

Local standards of fire cover are to be adopted within the coming reporting year.



OPS 3 Appliance Availability / Crewing

**Wholetime availability on the station
 (Reporting period April 05 - March 05)**



Monthly Stats (percentage)

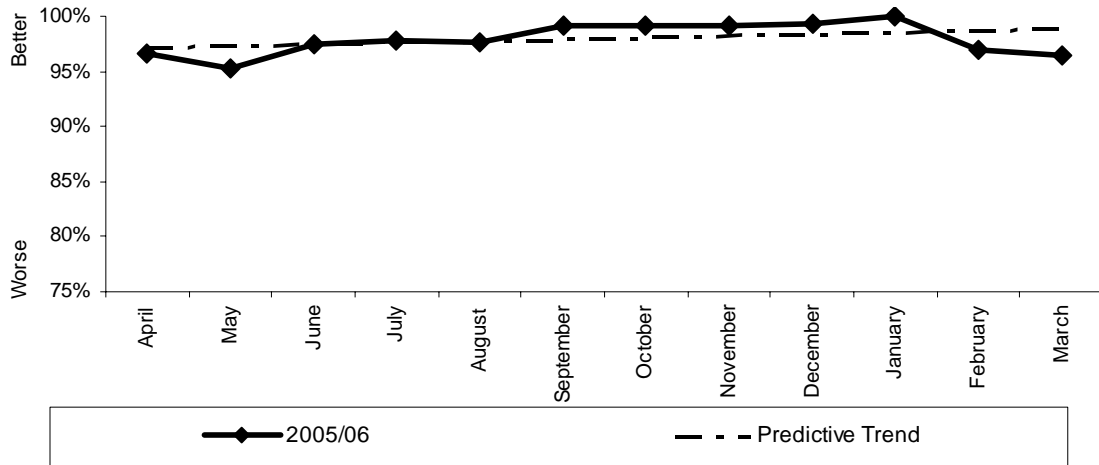
	Apr	May	June	July	Aug	Sept	Oct	Nov	Dec	Jan	Feb	Mar
2005	58.00%	44.00%	52.00%	35.00%	42.00%	83.00%	81.00%	90.00%	85.00%	97.00%	66.00%	58.00%
2004	-	-	-	-	-	-	-	-	-	-	-	-

Commentary



OPS 3 (FAPI 7)

**The percentage of shifts wholetime appliances crewed
(Reporting period April 05 - March 05)**



Monthly Stats (percentage)

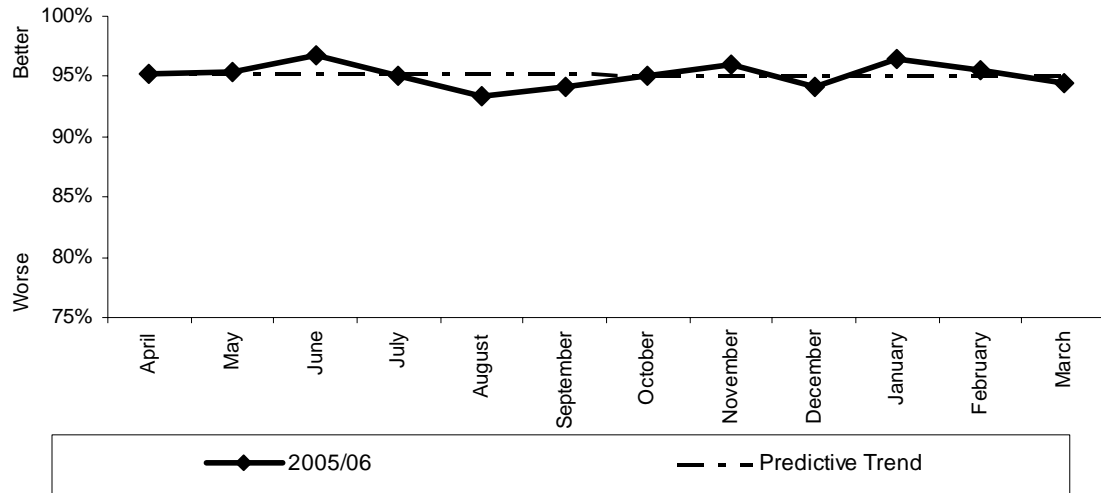
	Apr	May	June	July	Aug	Sept	Oct	Nov	Dec	Jan	Feb	Mar
2005	96.70%	95.20%	97.50%	97.80%	97.60%	99.20%	99.10%	99.20%	99.30%	100.00%	96.90%	96.50%
2004	-	-	-	-	-	-	-	-	-	-	-	-

Commentary



OPS 3 (FAPI 8)

**The percentage of shifts retained appliances crewed
(Reporting period April 05 - March 05)**



Monthly Stats (percentage)

	Apr	May	June	July	Aug	Sept	Oct	Nov	Dec	Jan	Feb	Mar
2005	95.20%	95.30%	96.70%	95.00%	93.30%	94.10%	95.00%	96.00%	94.20%	96.40%	95.50%	94.40%
2004	-	-	-	-	-	-	-	-	-	-	-	-

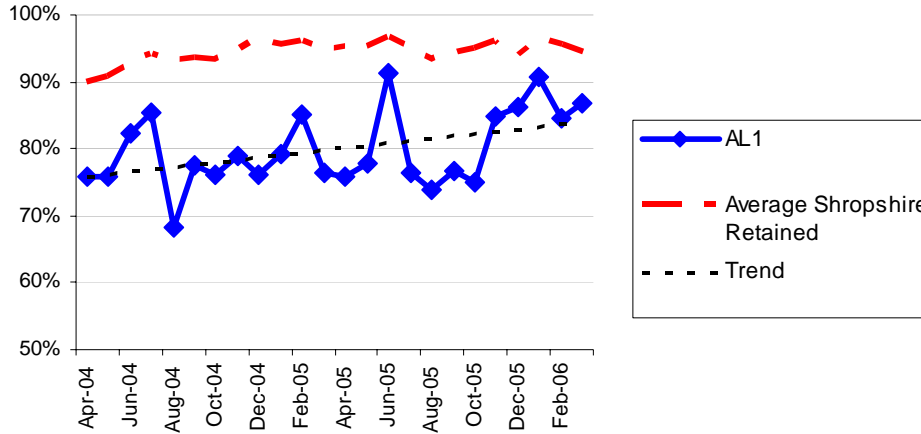
Commentary



OPS3 Appliance Availability / Crewing

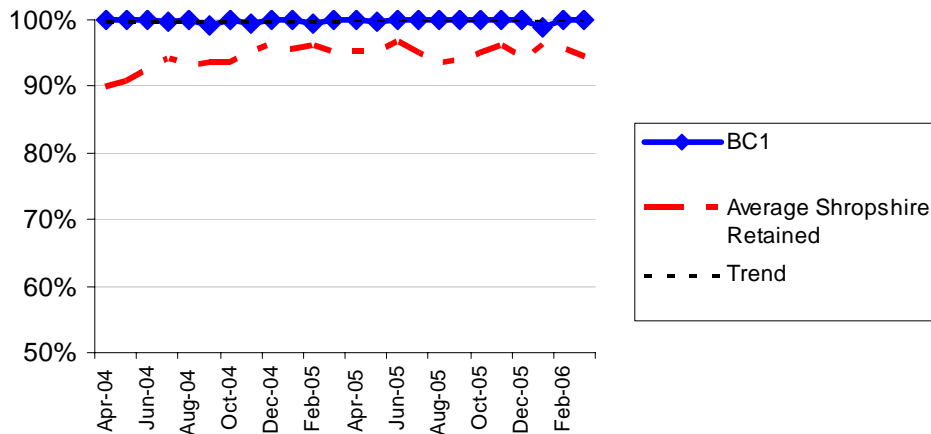
RETAINED

% Shifts Retained Appliances Crewed - Albrighton



%	Apr	May	June	July	Aug	Sept	Oct	Nov	Dec	Jan	Feb	Mar	Yearly %
2005	75.8	77.8	91.4	76.3	73.8	76.7	75.1	84.8	86.2	90.8	84.7	86.8	81.7
2004	75.9	75.9	82.2	85.4	68.3	77.5	76.2	78.9	76.1	79.1	85.2	76.3	78.1

% Shifts Retained Appliances Crewed - Bishops Castle

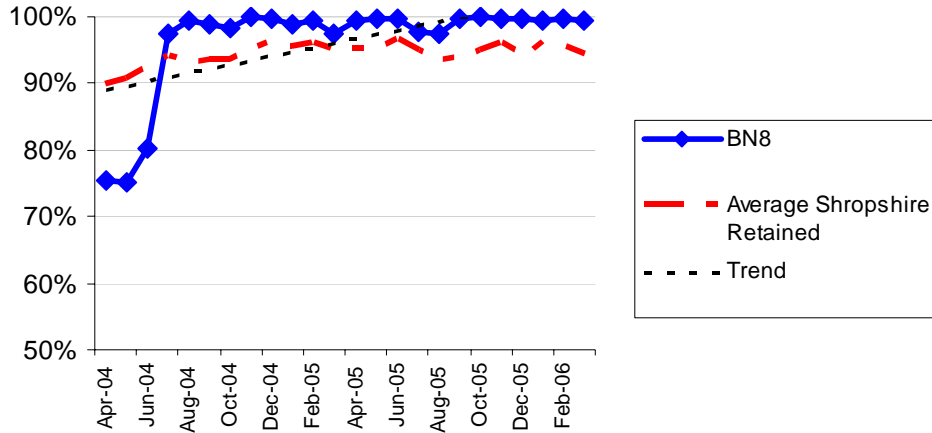


%	Apr	May	June	July	Aug	Sept	Oct	Nov	Dec	Jan	Feb	Mar	Yearly %
2005	100	99.8	100	100	100	100	100	100	100	98.9	100	100	99.9
2004	100	99.9	100	99.8	100	99.2	100	99.4	100	100	99.5	99.9	99.8



OPS3 Appliance Availability / Crewing

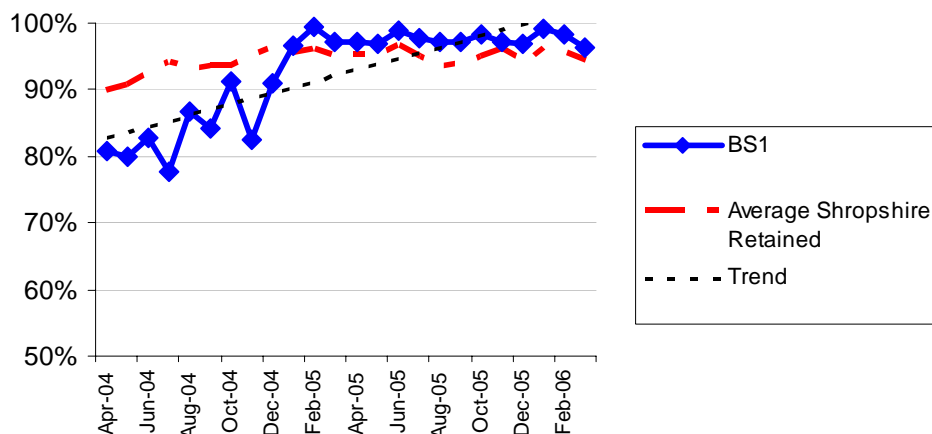
% Shifts Retained Appliances Crewed - Bridgnorth



%	Apr	May	June	July	Aug	Sept	Oct	Nov	Dec	Jan	Feb	Mar	Yearly %
2005	99.4	99.9	99.7	97.8	97.4	99.6	99.9	99.7	99.6	99.6	99.7	99.5	99.3
2004	75.4	75.1	80.2	97.4	99.4	98.9	98.3	100	99.7	99.0	99.6	97.6	84.8

* April, May and June averages 2 appliances

% Shifts Retained Appliances Crewed - Baschurch

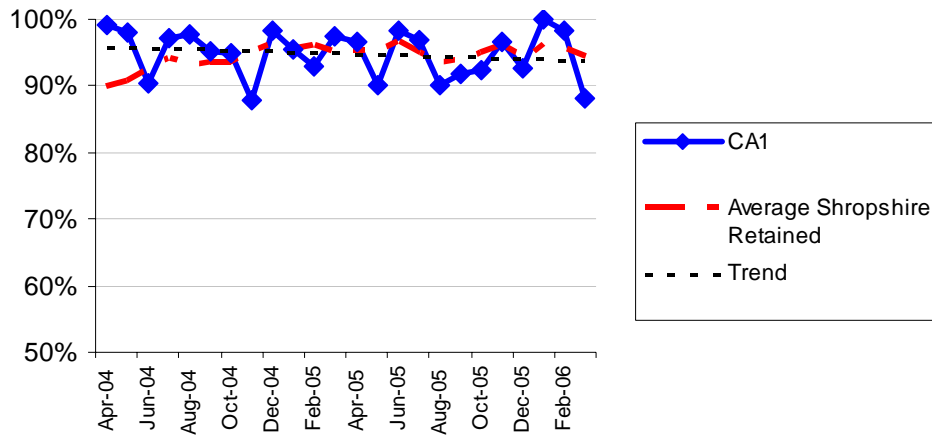


%	Apr	May	June	July	Aug	Sept	Oct	Nov	Dec	Jan	Feb	Mar	Yearly %
2005	97.2	96.8	98.9	97.8	97.2	97.1	98.4	97.2	97.0	99.0	98.2	96.3	97.6
2004	80.9	80.0	82.7	77.6	86.9	84.1	91.3	82.4	91.1	96.7	99.5	97.1	87.5



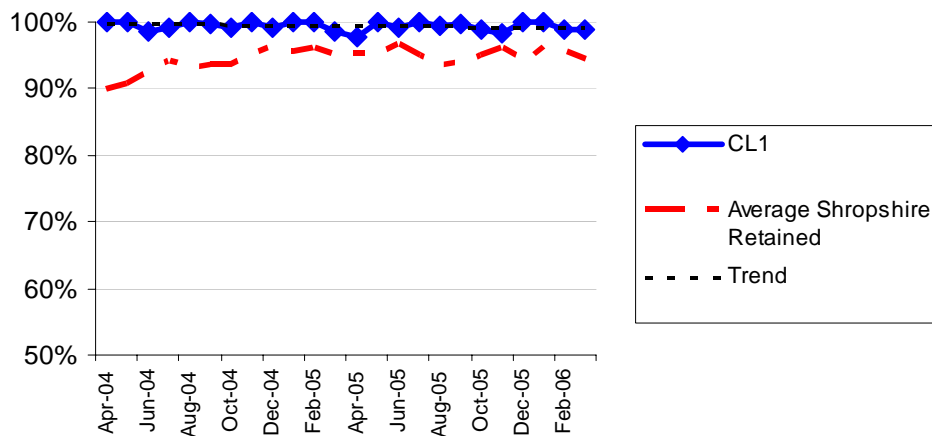
OPS3 Appliance Availability / Crewing

% Shifts Retained Appliances Crewed - Craven Arms



%	Apr	May	June	July	Aug	Sept	Oct	Nov	Dec	Jan	Feb	Mar	Yearly %
2005	96.6	90.2	98.4	96.9	90.0	91.7	92.3	96.5	92.6	100	98.2	88.1	94.3
2004	99.0	80.0	90.3	97.1	97.6	95.2	95.0	87.8	98.4	95.4	92.8	97.4	95.3

% Shifts Retained Appliances Crewed - Clun

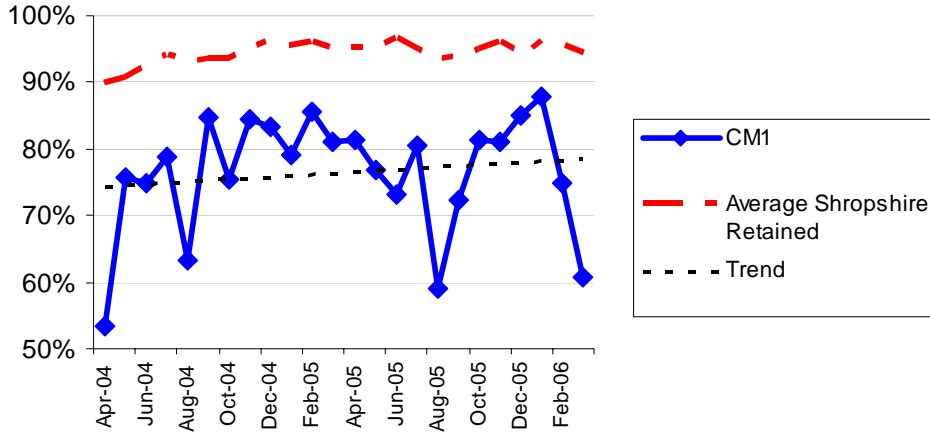


%	Apr	May	June	July	Aug	Sept	Oct	Nov	Dec	Jan	Feb	Mar	Yearly %
2005	97.7	100	99.1	100	99.5	99.6	98.8	98.4	100	100	98.8	98.8	99.2
2004	100	100	98.7	99.0	100	99.8	99.1	100	99.3	100	100	98.5	99.5



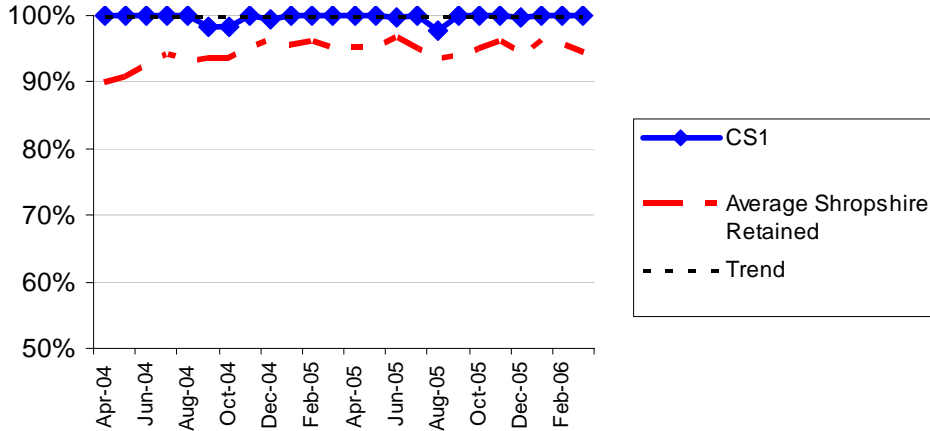
OPS3 Appliance Availability / Crewing

% Shifts Retained Appliances Crewed - Cleobury Mortimer



%	Apr	May	June	July	Aug	Sept	Oct	Nov	Dec	Jan	Feb	Mar	Yearly %
2005	81.5	76.8	73.2	80.4	58.9	72.2	81.5	81.2	85.0	88.0	74.9	60.8	76.2
2004	53.4	75.7	74.9	78.7	63.3	84.7	75.3	84.4	83.2	79.2	85.6	81.2	76.6

% Shifts Retained Appliances Crewed - Church Stretton

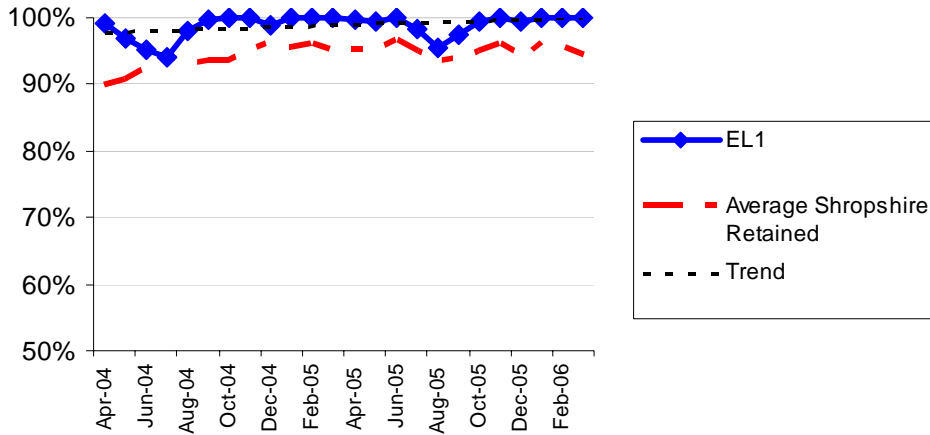


%	Apr	May	June	July	Aug	Sept	Oct	Nov	Dec	Jan	Feb	Mar	Yearly %
2005	100	100	99.7	100	97.6	100	100	100	99.7	100	100	100	99.7
2004	100	100	100	100	100	98.3	98.4	100	99.5	100	100	100	99.7



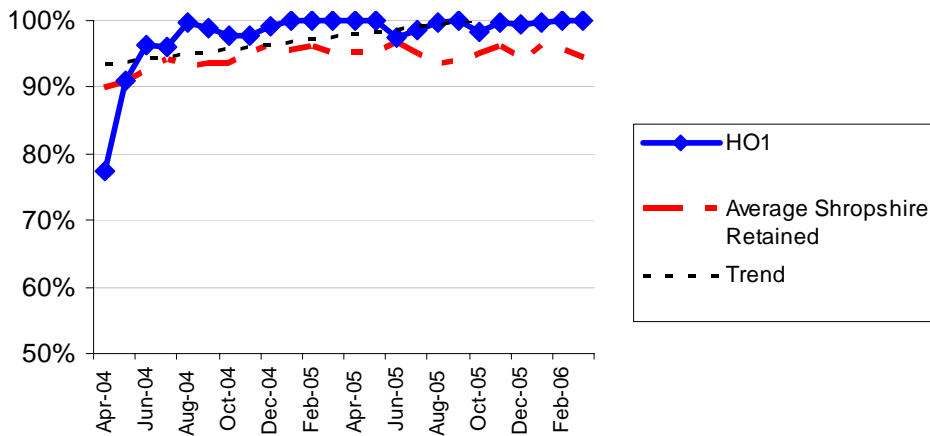
OPS3 Appliance Availability / Crewing

% Shifts Retained Appliances Crewed - Ellesmere



%	Apr	May	June	July	Aug	Sept	Oct	Nov	Dec	Jan	Feb	Mar	Yearly %
2005	99.7	99.5	100	98.2	95.6	97.6	99.5	100	99.3	100	100	100	99.1
2004	99.2	97.0	95.1	94.0	98.0	99.7	99.9	100	99.0	100	100	100	96.2

% Shifts Retained Appliances Crewed - Hodnet

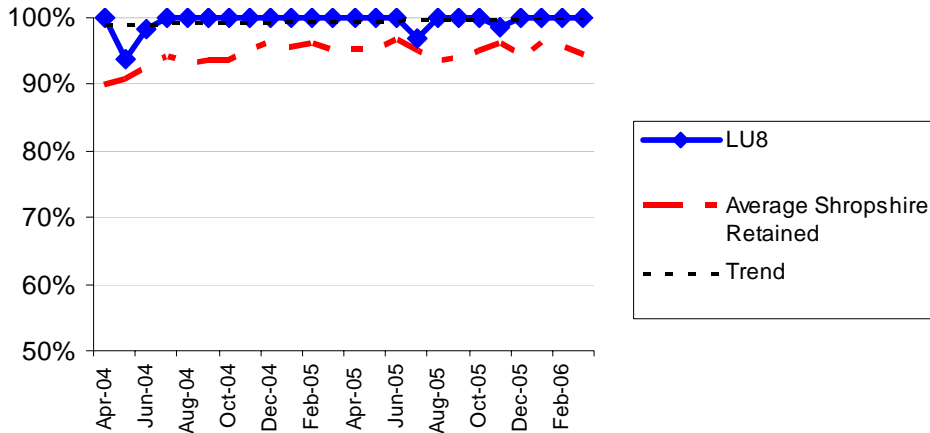


%	Apr	May	June	July	Aug	Sept	Oct	Nov	Dec	Jan	Feb	Mar	Yearly %
2005	100	100	97.4	98.4	99.7	100	98.3	99.6	99.4	99.8	100	99.9	99.4
2004	77.3	91.0	96.4	96.2	99.7	98.9	97.7	97.7	99.1	100	100	100	98.5



OPS3 Appliance Availability / Crewing

% Shifts Retained Appliances Crewed - Ludlow

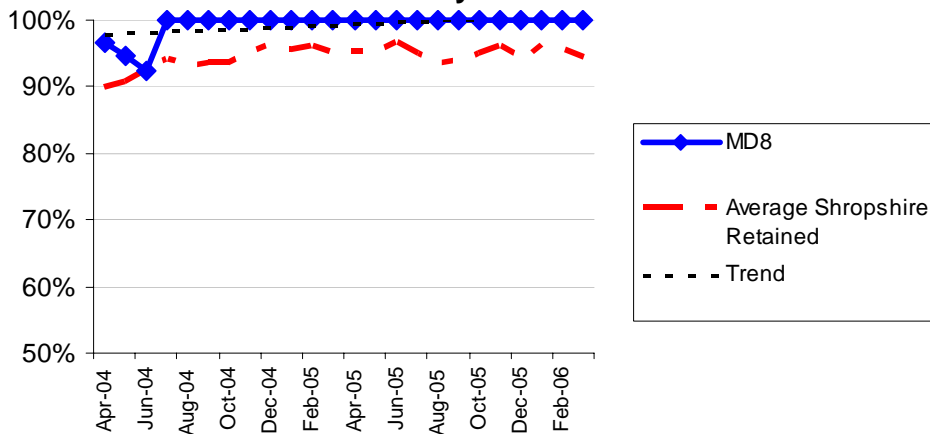


%	Apr	May	June	July	Aug	Sept	Oct	Nov	Dec	Jan	Feb	Mar	Yearly %
2005	100	100	100	96.9	100	100	100	98.6	100	100	100	100	99.6
2004	100	93.9	98.2 [†]	100	100	100	100	100	100	100	100	100	99.4

[†] April, May and Junes averages 2 appliances

% Shifts Retained Appliances Crewed - Market

Drayton



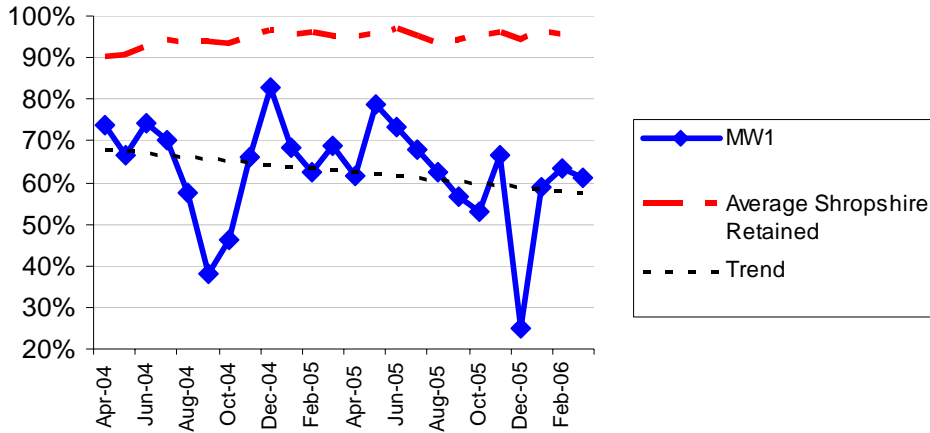
%	Apr	May	June	July	Aug	Sept	Oct	Nov	Dec	Jan	Feb	Mar	Yearly %
2005	100	100	100	100	100	100	100	100	100	100	100	100	100
2004	96.7	94.6	92.5 [‡]	100	100	100	100	100	100	100	100	100	98.7

[‡] April, May and June averages 2 appliances



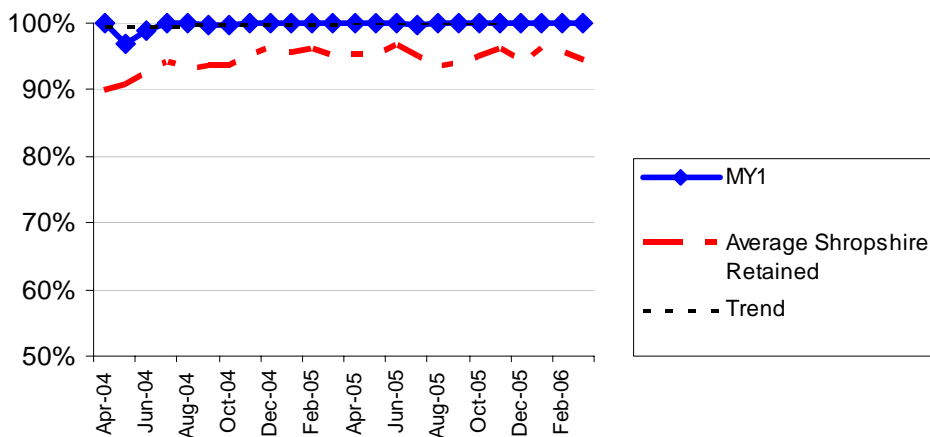
OPS3 Appliance Availability / Crewing

% Shifts Retained Appliances Crewed - Much Wenlock



%	Apr	May	June	July	Aug	Sept	Oct	Nov	Dec	Jan	Feb	Mar	Yearly %
2005	61.4	78.7	73.5	67.9	62.3	56.8	52.8	66.6	25.1	58.8	63.3	61.2	60.7
2004	74.0	66.7	74.2	70.0	57.5	38.2	46.3	66.3	82.9	68.5	62.5	68.8	64.7

% Shifts Retained Appliances Crewed - Minsterley

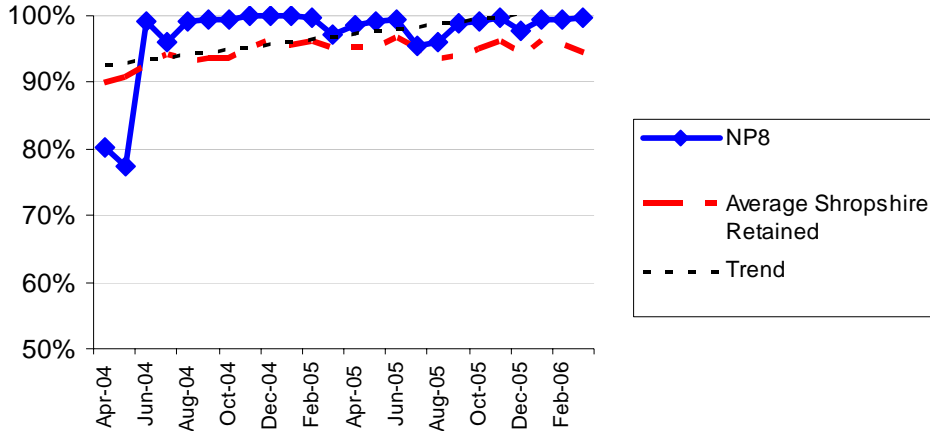


%	Apr	May	June	July	Aug	Sept	Oct	Nov	Dec	Jan	Feb	Mar	Yearly %
2005	100	100	100	99.7	100	100	100	100	100	100	100	100	100
2004	100	96.9	98.9	100	100	99.7	99.8	100	100	100	100	100	99.6



OPS3 Appliance Availability / Crewing

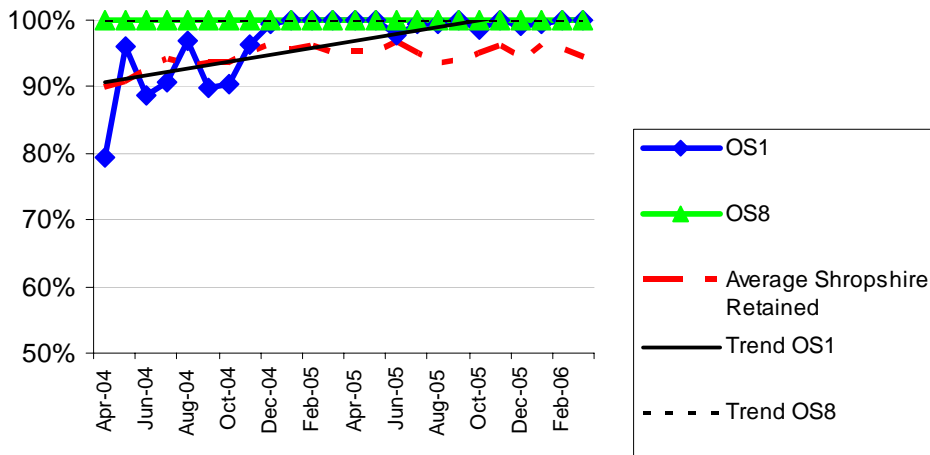
% Shifts Retained Appliances Crewed - Newport



%	Apr	May	June	July	Aug	Sept	Oct	Nov	Dec	Jan	Feb	Mar	Yearly %
2005	98.5	99.1	99.4	95.5	96.0	98.8	99.1	99.7	97.8	99.4	99.6	99.7	98.5
2004	80.3	77.3 [§]	99.2	96.1	99.1	99.3	99.4	100	100	100	99.8	97.3	95.7

[§] April and May averages appliances

% Shifts Retained Appliances Crewed - Oswestry

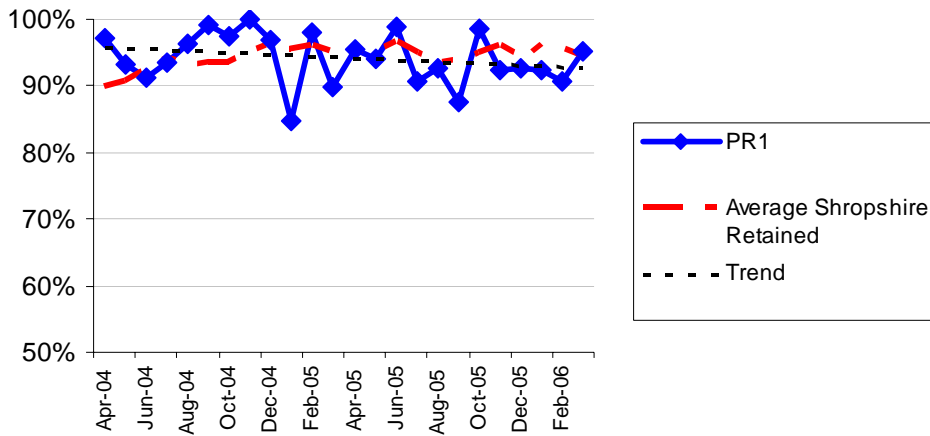


%	Apr	May	June	July	Aug	Sept	Oct	Nov	Dec	Jan	Feb	Mar	Yearly %	
2005	OS1	100	100	97.6	99.6	99.3	100	98.5	100	99.1	99.5	100	100	99.5
	OS8	100	100	100	100	100	100	100	100	100	100	100	100	100
2004	OS1	79.4	95.9	88.7	90.5	96.8	89.7	90.4	96.4	99.4	100	100	100	93.9
	OS8	100	100	100	100	100	100	100	100	100	100	100	100	100



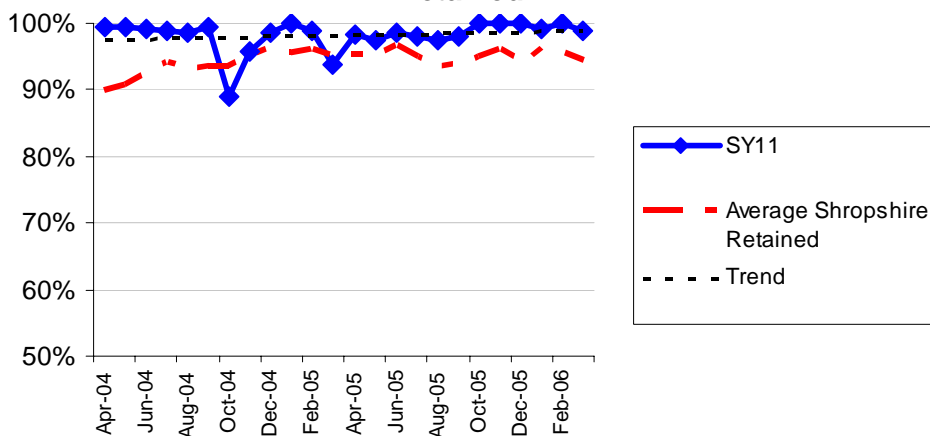
OPS3 Appliance Availability / Crewing

% Shifts Retained Appliances Crewed - Prees



%	Apr	May	June	July	Aug	Sept	Oct	Nov	Dec	Jan	Feb	Mar	Yearly %
2005	95.5	94.1	98.9	90.7	92.7	87.7	98.5	92.4	92.8	92.3	90.8	95.3	93.5
2004	97.3	93.3	91.2	93.5	96.2	99.1	97.5	100	96.8	84.8	97.9	89.7	94.8

% Shifts Retained Appliances Crewed - Shrewsbury Retained

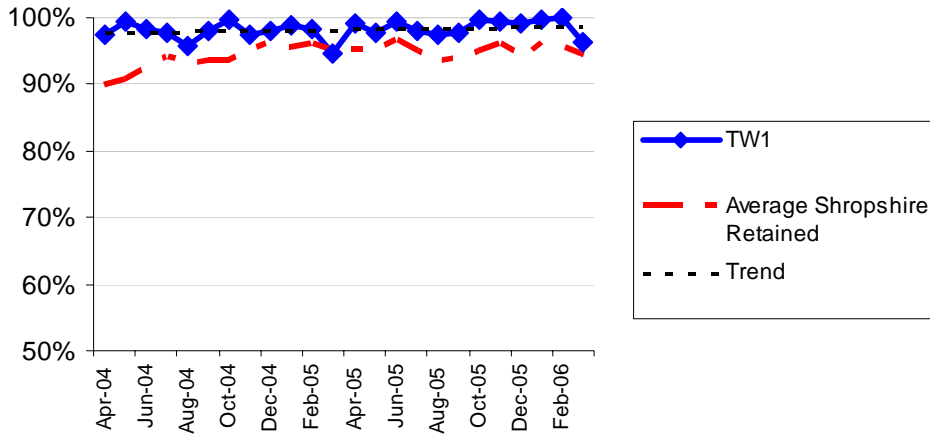


%	Apr	May	June	July	Aug	Sept	Oct	Nov	Dec	Jan	Feb	Mar	Yearly %
2005	98.2	97.5	98.5	98.1	97.6	98.1	100	100	100	99.2	100	98.8	98.8
2004	99.4	99.5	99.1	98.9	98.6	99.5	88.9	95.8	98.6	100	98.9	93.8	97.6



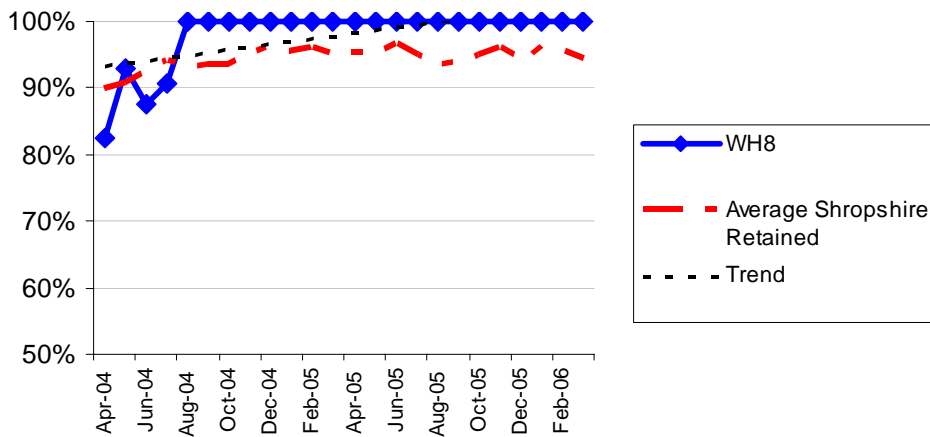
OPS3 Appliance Availability / Crewing

% Shifts Retained Appliances Crewed - Tweeddale



%	Apr	May	June	July	Aug	Sept	Oct	Nov	Dec	Jan	Feb	Mar	Yearly %
2005	99.0	97.7	99.5	98.1	97.4	97.6	99.6	99.4	99.1	99.6	99.9	96.4	98.6
2004	97.4	99.4	98.4	97.8	95.8	98.1	99.7	97.4	97.9	98.9	98.4	94.6	97.8

% Shifts Retained Appliances Crewed - Whitchurch



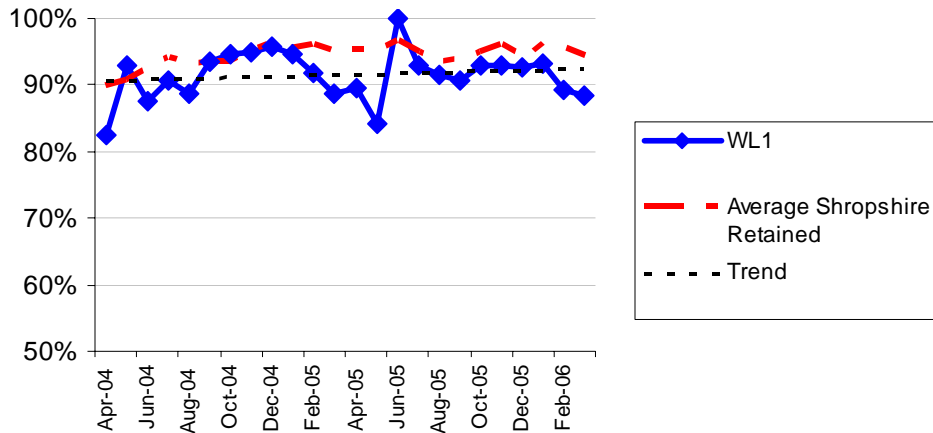
%	Apr	May	June	July	Aug	Sept	Oct	Nov	Dec	Jan	Feb	Mar	Yearly %
2005	100	100	100	100	100	100	100	100	100	100	100	100	100
2004	98.8	97.9	98.9**	100	100	100	100	100	100	100	100	100	99.6

** April, May and June averages 2 appliances



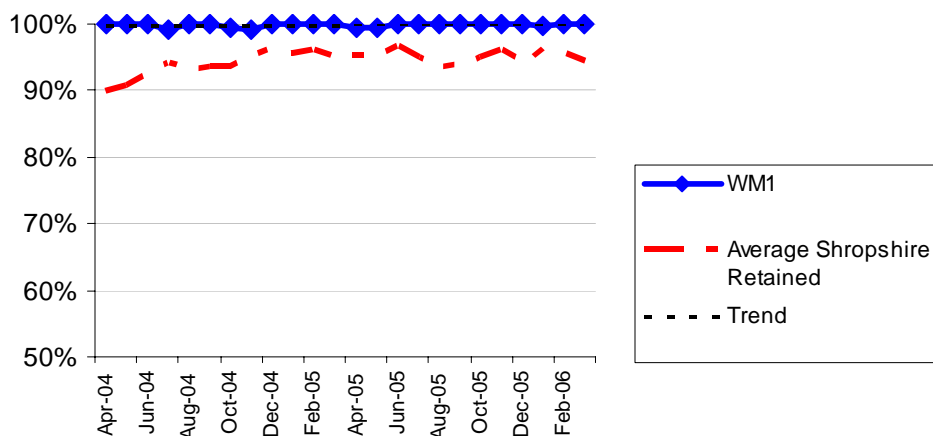
OPS3 Appliance Availability / Crewing

% Shifts Retained Appliances Crewed - Wellington



%	Apr	May	June	July	Aug	Sept	Oct	Nov	Dec	Jan	Feb	Mar	Yearly %
2005	89.5	84.1	100	92.9	91.5	90.7	92.9	93.1	92.7	93.3	89.4	88.5	91.5
2004	82.5	93.0	87.6	90.6	88.6	93.6	94.6	94.8	95.6	94.7	91.9	88.7	91.4

% Shifts Retained Appliances Crewed - Wem

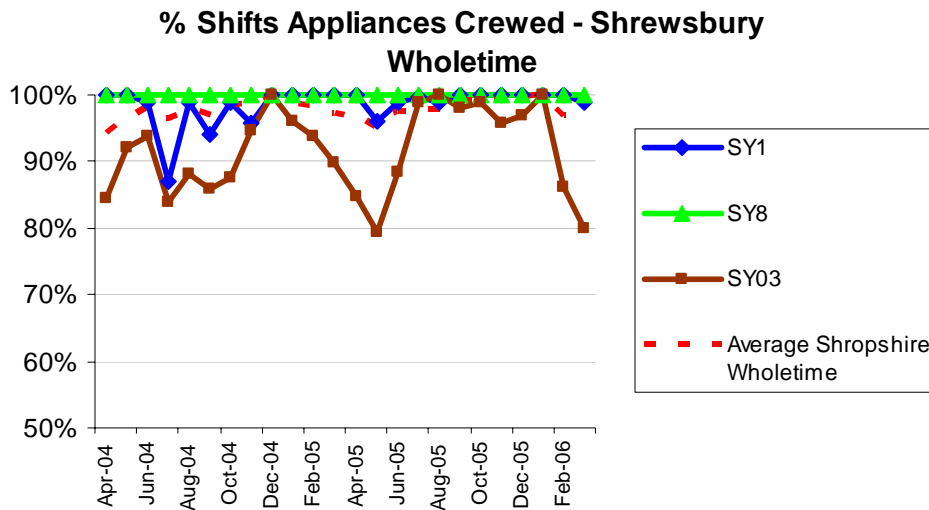


%	Apr	May	June	July	Aug	Sept	Oct	Nov	Dec	Jan	Feb	Mar	Yearly %
2005	99.5	99.4	100	100	100	100	100	100	100	99.6	100	100	99.9
2004	100	100	100	99.1	100	100	99.6	99.3	100	100	100	100	93.8

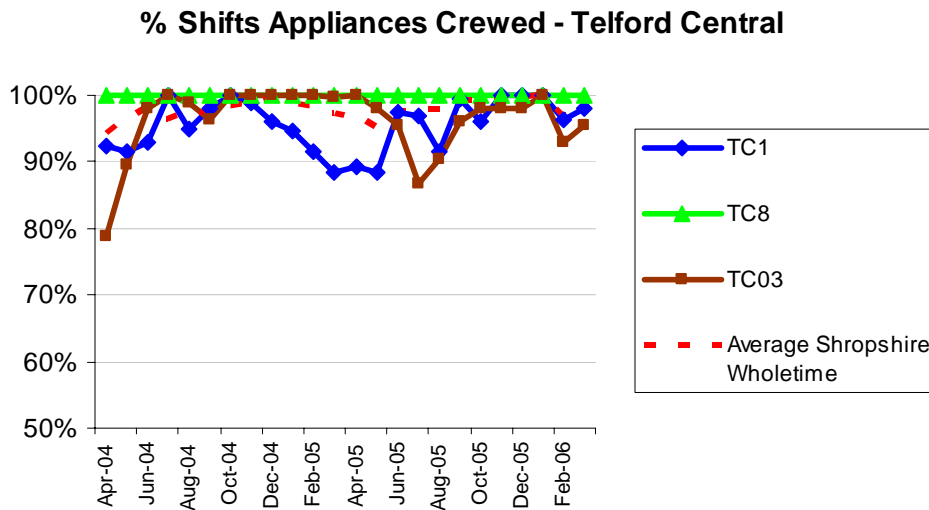


OPS3 Appliance Availability / Crewing

WHOLETIME



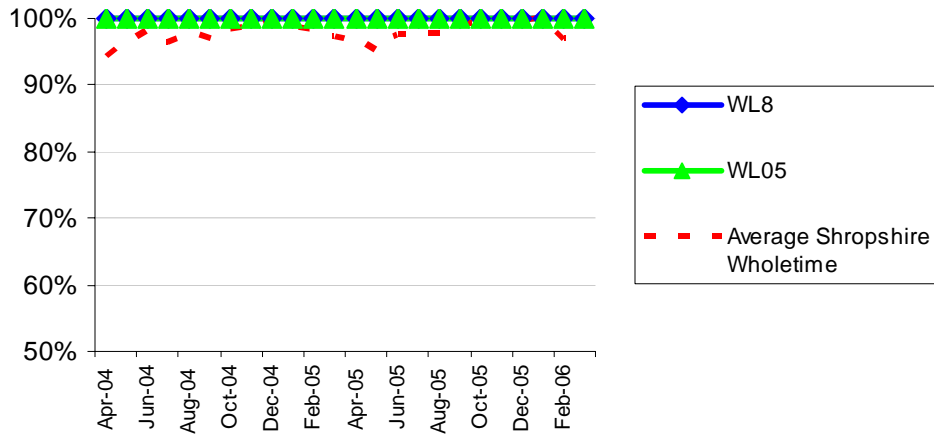
%		Apr	May	June	July	Aug	Sept	Oct	Nov	Dec	Jan	Feb	Mar	Yearly %
2005	SY1	100	96.1	98.8	99.8	98.8	100	100	100	100	100	100	98.8	99.4
	SY8	100	100	100	100	100	100	100	100	100	100	100	100	100
	SY03	84.8	79.3	88.3	98.8	100	97.9	98.8	95.8	96.8	100	86.2	79.8	92.2
2004	SY1	100	100	98.8	86.9	99.0	94.2	98.8	95.8	100	100	100	100	97.8
	SY8	100	100	100	100	100	100	100	100	100	100	100	100	100
	SY03	84.6	92.0	93.7	83.9	88.2	85.8	87.5	94.6	100	96.0	93.8	89.9	90.8



%		Apr	May	June	July	Aug	Sept	Oct	Nov	Dec	Jan	Feb	Mar	Yearly %
2005	TC1	89.2	88.3	97.5	96.8	91.5	99.4	96.0	100	100	100	96.4	98.0	96.1
	TC8	100	100	100	100	100	100	100	100	100	100	100	100	100
	TC03	100	98.0	95.4	86.7	90.3	96.0	98.0	97.9	98.0	100	92.9	95.6	95.7
2004	TC1	92.3	91.5	92.9	100	95.0	97.9	100	98.8	96.0	94.8	91.5	88.3	94.9
	TC8	100	100	100	100	100	100	100	100	100	100	100	100	100
	TC03	78.8	89.5	97.9	100	98.8	96.4	100	100	100	100	100	99.6	96.7



% Shifts Appliances Crewed - Wellington Wholetime



%		Apr	May	June	July	Aug	Sept	Oct	Nov	Dec	Jan	Feb	Mar	Yearly %
2005	WL8	100	100	100	100	100	100	100	100	100	100	100	100	100
	WL05	100	100	100	100	100	100	100	100	100	100	100	100	100
2004	WL8	100	100	100	100	100	100	100	100	100	100	100	100	100
	WL05	100	100	100	100	100	100	100	100	100	100	100	100	100



