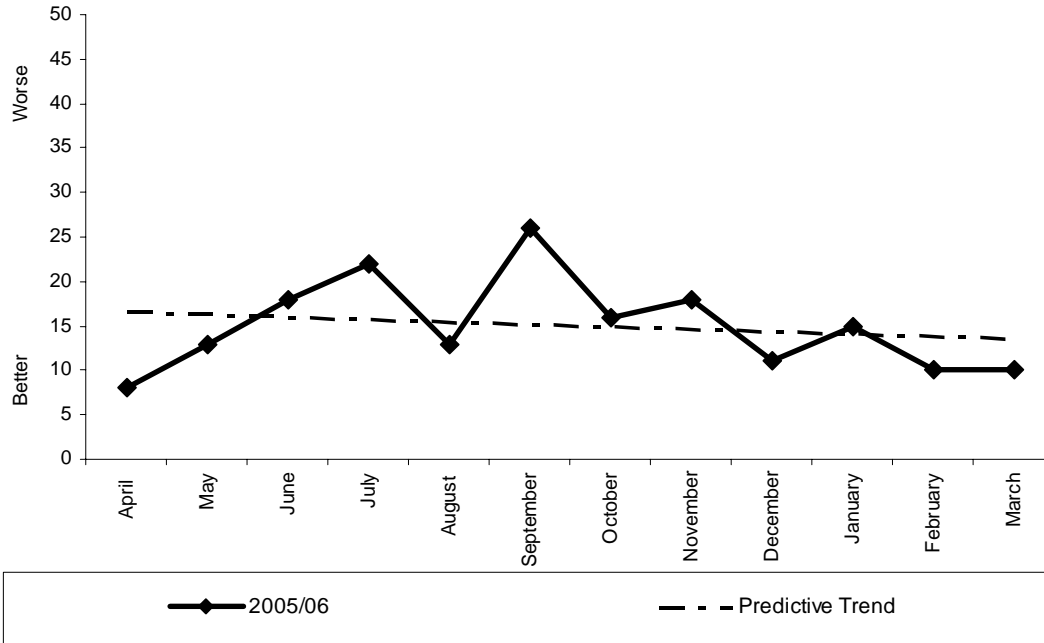


149(ii)

**The number of those properties with more than 1 attendance
 (Reporting period April 05 - March 06)**



Monthly Stats (per 1,000 non-domestic properties)

	Apr	May	June	July	Aug	Sept	Oct	Nov	Dec	Jan	Feb	Mar	YTD
2005	0.53	0.86	1.19	1.45	0.86	1.72	1.06	1.19	0.73	0.99	0.66	0.66	11.88
2004	No previous data as this is a new BVPI												

Monthly Stats (actual incidents)

	Apr	May	June	July	Aug	Sept	Oct	Nov	Dec	Jan	Feb	Mar	YTD
2005	8	13	18	22	13	26	16	18	11	15	10	10	180
2004	No previous data as this is a new BVPI												

Analysis

Yearly target	Will Authority achieve target? (Estimate using predictive trend)	Have current results improved since the same month last year?	Have current yearly results (including predictive trend) improved since last year?
No target set as no previous data	N/A	N/A	N/A

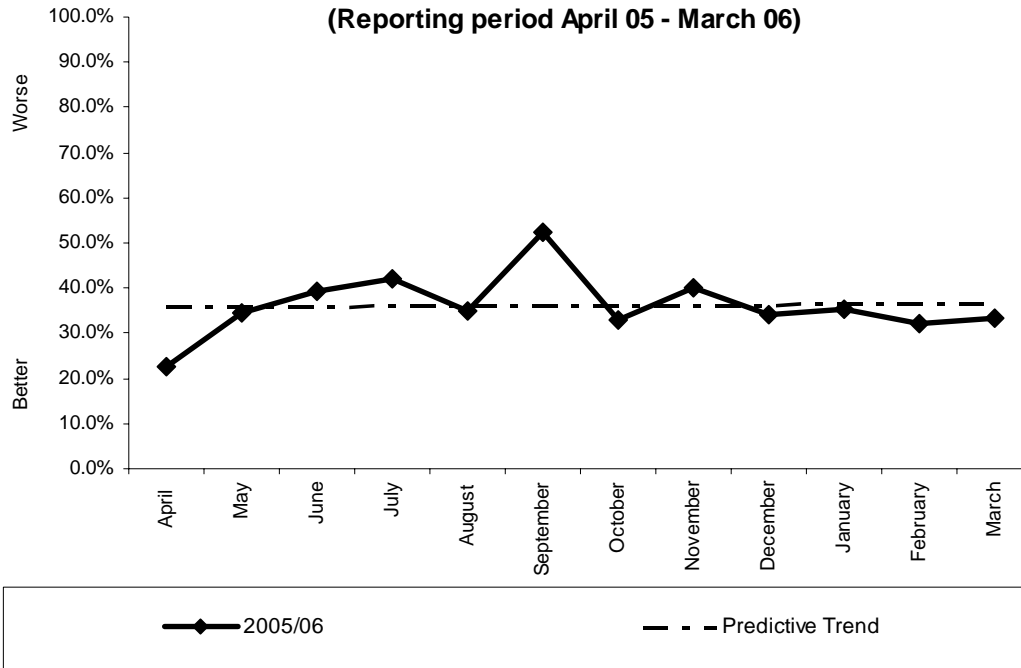
Commentary

A target of 12.0 has been set for the 2006/07 reporting year, and monitoring against this target will appear in future reports.

149(iii)

The percentage of calls which are to a property with more than 1 attendance

(Reporting period April 05 - March 06)



Monthly Stats (percentage)

	Apr	May	June	July	Aug	Sept	Oct	Nov	Dec	Jan	Feb	Mar
2005	22.78%	34.69%	39.45%	42.02%	35.11%	52.25%	32.76%	40.00%	34.21%	35.35%	32.00%	33.33%
2004	No previous data as this is a new BVPI											

Monthly Stats (actual incidents)

	Apr	May	June	July	Aug	Sept	Oct	Nov	Dec	Jan	Feb	Mar	YTD	%
2005	18/79	34/98	43/109	50/119	33/94	58/111	38/116	40/100	26/78	35/99	24/75	30/90	429/1166	36.79%
2004	No previous data as this is a new BVPI													

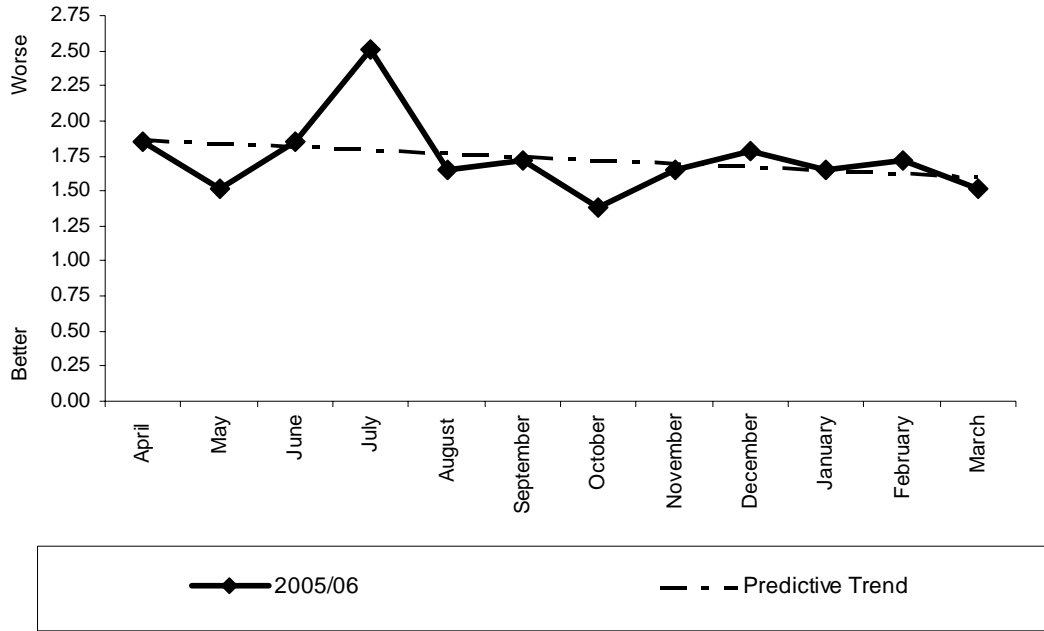
Analysis

Yearly target	Will Authority achieve target? (Estimate using predictive trend)	Have current results improved since the same month last year?	Have current yearly results (including predictive trend) improved since last year?
No target set as no previous data	N/A	N/A	N/A

Commentary

A target of 36% has been set for the 2006/07 reporting year, and monitoring against this target will appear in future reports.

The number of fires in non-domestic premises per 1,000 non-domestic premises
(Reporting period April 05 - March 06)



Monthly Stats (per 10,000 population)

	Apr	May	June	July	Aug	Sept	Oct	Nov	Dec	Jan	Feb	Mar	YTD
2005	1.85	1.52	1.85	2.51	1.65	1.72	1.39	1.65	1.78	1.65	1.72	1.52	20.79
2004	No previous data as this is a new BVPI												

Monthly Stats (actual incidents)

	Apr	May	June	July	Aug	Sept	Oct	Nov	Dec	Jan	Feb	Mar	YTD
2005	28	23	28	38	25	26	21	25	27	25	26	23	315
2004	No previous data as this is a new BVPI												

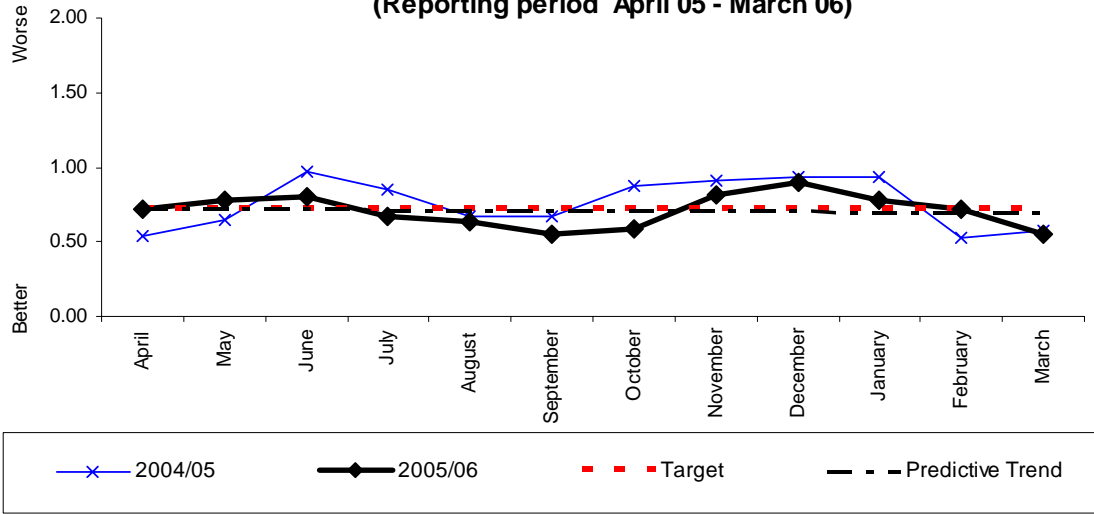
Analysis

Yearly target	Will Authority achieve target? (Estimate using predictive trend)	Have current results improved since the same month last year?	Have current yearly results (including predictive trend) improved since last year?
No target set as no previous data	N/A	N/A	N/A

Commentary
Suggested target 20

12(i)

The proportion of working days/shifts lost due to sickness absence by wholetime uniformed staff
(Reporting period April 05 - March 06)



Monthly Stats (days)

	Apr	May	June	July	Aug	Sept	Oct	Nov	Dec	Jan	Feb	Mar	YTD
2005	0.71	0.78	0.81	0.67	0.64	0.55	0.59	0.82	0.89	0.78	0.72	0.55	8.49
2004	0.54	0.65	0.97	0.85	0.67	0.67	0.88	0.91	0.93	0.93	0.53	0.57	9.09

Monthly Stats (actual)

	Apr	May	June	July	Aug	Sept	Oct	Nov	Dec	Jan	Feb	Mar	YTD
2005	163	177	187	152	145	125	134	186	204	177	164	125	1939
2004	114	136	204	179	139	142	186	193	197	197	112	121	1920

Analysis

Yearly target	Will Authority achieve target? (Estimate using predictive trend)	Have current results improved since the same month last year?	Have current yearly results (including predictive trend) improved since last year?
8.6	√	√	√

Commentary

209	i	The percentage of fires attended in dwellings where a smoke alarm had activated	N/A	N/A	N/A
	ii	The percentage of fires attended in dwellings where a smoke alarm was fitted but did not activate	N/A	N/A	N/A
	iii	The percentage of fires attended in dwellings where no smoke alarm was fitted	N/A	N/A	N/A
2a		The level (if any) of the Equality Standard for Local Government to which the authority conforms	X	√	√
2b		The quality of an Authority's Race Equality Scheme (RES) and the improvements resulting from its application	√	N/A	N/A
8		The percentage of undisputed invoices which were paid in 30 days	X	√	√
11	i	The percentage of top 5% of earners that are women	√	√	√
	ii	The percentage of top 5% of earners from ethnic minority communities	√	√	√
	iii	The percentage of top 5% of earners that have a disability	N/A	N/A	N/A
12	i	The proportion of working days/shifts lost to sickness absence by wholetime uniformed staff	√	√	√
	ii	The proportion of working days/shifts lost to sickness absence by all staff	X	X	X
15	i	Wholetime fire-fighter ill-health retirements as a percentage of the total workforce	√	√	√
	ii	Control and non-uniformed ill-health retirements as a percentage of the total workforce	√	=	=
16a	i	The percentage of wholetime and retained duty system employees with a disability	N/A	N/A	N/A
	ii	The percentage of control and non-uniformed employees with a disability	N/A	N/A	N/A
16b		The percentage of the economically active population in the authority area who have a disability	Data not yet collated		
17a		The percentage of uniformed staff from ethnic minority communities	N/A	N/A	N/A
17b		The percentage of economically active (persons aged 18-54) population from ethnic minority communities in the fire and rescue service area	Data not yet collated		
157		The number of types of interactions that are enabled for e-delivery as a percentage of the types of interactions that are legally permissible for e-delivery	X	√	√
210		The percentage of women firefighters	N/A	N/A	N/A