

REPORT OF THE CHIEF FIRE OFFICER

PERFORMANCE AGAINST BEST VALUE PERFORMANCE INDICATORS APRIL TO DECEMBER 2005

1 Purpose of Report

To inform Members of the Brigade's performance against nationally prescribed Best Value Performance Indicators (BVPIs) for the period 1 April to 30 December 2005.

2 Recommendations

Members are requested to:

- a) Note the report content in respect of performance; and
- b) Consider the presentation style of the information provided, giving comments where appropriate for amendments to future reports to aid the regular assessment of performance.

3 Background

The Office of the Deputy Prime Minister (ODPM) publishes BVPIs for fire and rescue authorities. Performance against nationally prescribed BVPIs enables the ODPM to produce annual league tables. This information enables performance to be assessed against peer authorities and identifies areas of good or weak performance. Such information is invaluable in supporting the identification of priorities for forthcoming performance improvement strategies.

Following the publication of the Fire Service National Framework Document 2005/6, amendments have been made in relation to the reporting of some of the Best Value Performance Indicators.



4 Report Content

This report documents performance for the first, second and third quarters of 2005/06 against the BVPIs outlined in Annexe F of the Framework document and as a consequence published in Authority's Performance Plan 2005/06.

For each performance indicator a graph has been produced, detailing the following information:

- Current performance for the 1st, 2nd and 3rd quarters of 2005/06;
- Predicted trend line for the remainder of 2005/06;
- Previous data from 2004/05, where applicable; and
- Target threshold, where appropriate.

Each graph is accompanied by two tables, which contain monthly statistics for 2005/06 and the previous year 2004/05. The first table contains figures based on a calculation (the performance indicator or PI) and the second table gives the actual figure. So, in the case of BVPI 142(ii) – the number of primary fires per 10,000 population, the first table gives a figure bench marked against the population, whilst the second table gives the actual monthly figures (i.e. the actual number of primary fires). A year to date (titled YTD in the tables) total is also given, so that the running total of the current year can be monitored against the previous full year figure, except for BVPIs 2a, 2b, 11, 17, 157 and 210, where the last month reported is the cumulative full year total to date.

A final table at the foot of each page contains an analysis table, which includes the following:

- Yearly Target
- Will the Authority achieve its yearly target?
- Have the current results improved upon the same month last year?
- Will the current yearly results (based on predictive analysis) improve on the previous year?

For clarity, current calculations are based on the following data, and have been updated in line with ODPM Guidance on BVPI reporting:

	Figure	Source
Population of Shropshire	448,900	Registrar General Mid Term Estimates 2004
Domestic Dwellings in Shropshire	186,757	Chartered Institute of Public Finance and Accountancy (CIPFA) 2005
Non-Domestic Dwellings in Shropshire	15,155	Chartered Institute of Public Finance and Accountancy (CIPFA) 2005

5 Performance

Performance is summarised and recorded within the following appendices:

- Appendix A contains a snapshot summary table on performance against current BVPIs;
- Appendix B includes specific information on each individual Service Delivery and Corporate Health Indicator, including support graphs and tables;
- Appendix C contains BVPIs no longer required by the ODPM (July 2005);



- Appendix D is for monitoring purposes, based on the availability of retained and wholetime firefighters in the County; and
- Appendix E is to provide a prediction of achievement based on data available after the Quarter 3 reporting period.

It should be noted that, as many new BVPIs occur for 2005/06, no historic information exists to enable comparisons with previous periods to be made. Moreover, the absence of historical data and league tables prevents, at this stage, meaningful targets to be set. This situation will be monitored enabling targets to be set within the 2006/07 Performance Plan.

6 Legal Comment

Fire and Rescue authorities are required to report BVPIs to the ODPM on a quarterly and annual basis. BVPIs to be reported on are promulgated at Annex F of the Fire and Rescue Service National Framework Document 2005/06. As a consequence these BVPIs and associated targets appear in the Authority's Performance Plan 2005/06.

7 Financial Implications

There are no financial implications arising from this report.

8 Equality and Diversity Implications

There are no equality or diversity implications arising from this report.

9 Appendices

- Appendix A** Summary of Best Value Performance Indicators
- Appendix B** Performance Information on Current BVPIs for 2005/06
- Appendix C** BVPIs no longer requested by the ODPM
- Appendix D** OPS3 Appliance Availability / Crewing
- Appendix E** 2005-06 Estimated Outturn (not actual and unverified)

10 Background Papers

Office of the Deputy Prime Minister

Fire Service Circular 60-2004 (December 2004) Guidance for Best Value Performance Indicators (BVPIs) 2005/06

Fire Service Circular 14-2005 (March 2005) Revised Guidance for Best Value Performance Indicators (BVPIs) 2005/06

Fire and Rescue Service National Framework Document 2005/06

For further information about this report please contact Alan Taylor, Chief Fire Officer, on 01743 260201 or Helen Jones, Statistics Research Officer, on 01743 260277.



BVPIs (as requested by the ODPM July 2005)

BVPI		Definition	Is Authority like to achieve target?*	Have current results improved since the same month last year?	Have current yearly results (including predictive trend) improved since last year?
142	ii	The number of primary fires per 10,000 population	√	√	√
	iii	The number of accidental fires in dwellings per 10,000 dwellings	√	X	√
143	i	The number of deaths arising from accidental fires in dwellings per 100,000 pop	X	X	X
	ii	The number of injuries (excluding precautionary checks) arising from accidental fires in dwellings per 100,000 population	X	X	X
144		The percentage of accidental dwelling fires confined to room of origin	√	N/A	N/A
146	i	The number of calls to malicious false alarms not attended per 1,000 population	N/A	N/A	N/A
	ii	The number of calls to malicious false alarms attended per 1,000 population	N/A	N/A	N/A
149	i	The number of false alarms caused by automatic fire detection per 1,000 non-domestic properties	√	√	√
	ii	The number of those properties with more than 1 attendance	N/A	N/A	N/A
	iii	The percentage of calls which are to a property with more than 1 attendance	N/A	N/A	N/A
150		The expenditure per head of population on the provision of fire and rescue services	Data not yet collated		
206	i	The number of deliberate primary fires (excluding deliberate primary fires in vehicles) per 10,000 population	N/A	N/A	N/A
	ii	The number of deliberate primary fires in vehicles per 10,000 population	N/A	N/A	N/A
	iii	The number of deliberate secondary fires (excluding deliberate secondary fires in vehicles) per 10,000 population	N/A	N/A	N/A
	iv	The number of deliberate secondary fires in vehicles per 10,000 population	N/A	N/A	N/A
207		The number of fires in non-domestic premises per 1,000 non-domestic premises	N/A	N/A	N/A
208		The percentage of people in accidental dwellings fires who escape unharmed without FRA assistance at the fire	N/A	N/A	N/A



209	i	The percentage of fires attended in dwellings where a smoke alarm had activated	N/A	N/A	N/A
	ii	The percentage of fires attended in dwellings where a smoke alarm was fitted but did not activate	N/A	N/A	N/A
	iii	The percentage of fires attended in dwellings where no smoke alarm was fitted	N/A	N/A	N/A
2a		The level (if any) of the Equality Standard for Local Government to which the authority conforms	X	√	√
2b		The quality of an Authority's Race Equality Scheme (RES) and the improvements resulting from its application	√	N/A	N/A
8		The percentage of undisputed invoices which were paid in 30 days	X	X	X
11	i	The percentage of top 5% of earners that are women	√	√	√
	ii	The percentage of top 5% of earners from ethnic minority communities	X	X	X
	iii	The percentage of top 5% of earners that have a disability	N/A	N/A	N/A
12	i	The proportion of working days/shifts lost to sickness absence by wholetime uniformed staff	√	√	√
	ii	The proportion of working days/shifts lost to sickness absence by all staff	√	√	√
15	i	Wholetime fire-fighter ill-health retirements as a percentage of the total workforce	√	√	√
	ii	Control and non-uniformed ill-health retirements as a percentage of the total workforce	√	=	=
16a	i	The percentage of wholetime and retained duty system employees with a disability	N/A	N/A	N/A
	ii	The percentage of control and non-uniformed employees with a disability	N/A	N/A	N/A
16b		The percentage of the economically active population in the authority area who have a disability	Data not yet collated		
17a		The percentage of uniformed staff from ethnic minority communities	N/A	N/A	N/A
17b		The percentage of economically active (persons aged 18-54) population from ethnic minority communities in the fire and rescue service area	Data not yet collated		
157		The number of types of interactions that are enabled for e-delivery as a percentage of the types of interactions that are legally permissible for e-delivery	X	√	√
210		The percentage of women firefighters	N/A	N/A	N/A

* In the majority of cases, where a target has not been set there has been no previous data to base one on (new BVPIs, hence current data cannot be compared to previous results).



BVPIs no longer requested by the ODPM (included for reference)

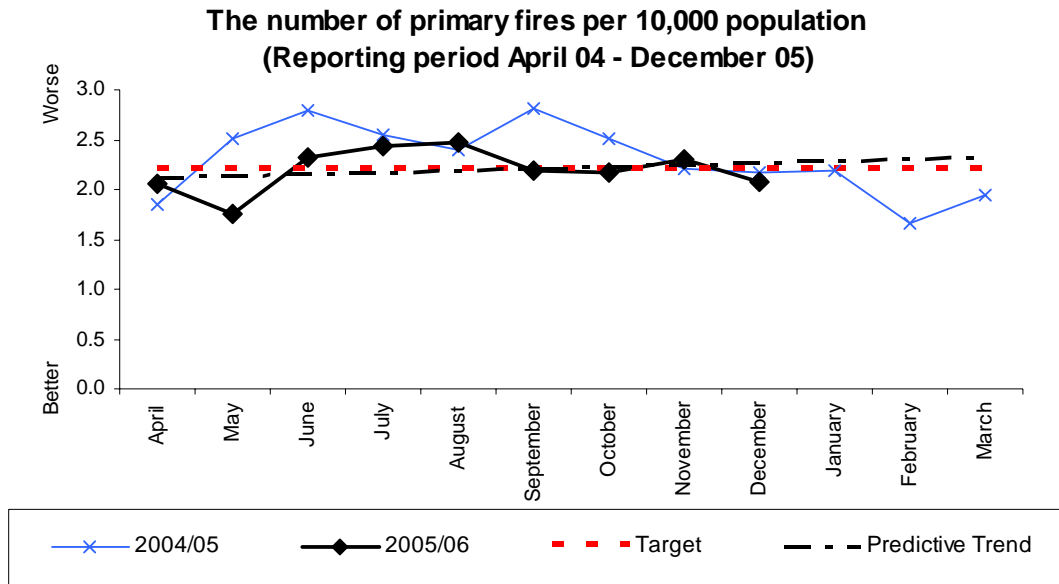
- 145i - The percentage of incidents at which the number of appliances met the standards of fire cover
- 145ii - The percentage of incidents at which the number of riders met the standards of fire cover
- 145iii - The percentage of incidents at which the attendance times met the standards of fire cover
- 146 - The number of calls to malicious false alarms per 1,000 population
- 206 - The number of deliberate fires per 10,000 population
- 17 - The percentage of minority ethnic community uniformed staff; comparative with the percentage of minority ethnic community population of working age in Brigade area

Amendments have been made to the figures reported under BVPI 149. The guidance and implementation of the reporting of this statistic now allows for the removal of all properties for 2005/06. This is to be considered especially in relation to yearly comparisons as previous years statistics contain domestic properties.



Service Delivery Indicators

142ii



Monthly Stats (per 10,000 population)

	Apr	May	June	July	Aug	Sept	Oct	Nov	Dec	Jan	Feb	Mar	YTD
2005	2.1	1.8	2.3	2.4	2.5	2.2	2.2	2.2	2.1				19.7
2004	1.9	2.5	2.8	2.6	2.4	2.8	2.5	2.2	2.2	2.2	1.7	1.9	27.7

Monthly Stats (actual incidents)

	Apr	May	June	July	Aug	Sept	Oct	Nov	Dec	Jan	Feb	Mar	YTD
2005	92	79	104	109	111	98	97	103	93				886
2004	83	112	125	114	107	126	112	99	97	98	74	87	1239

Analysis

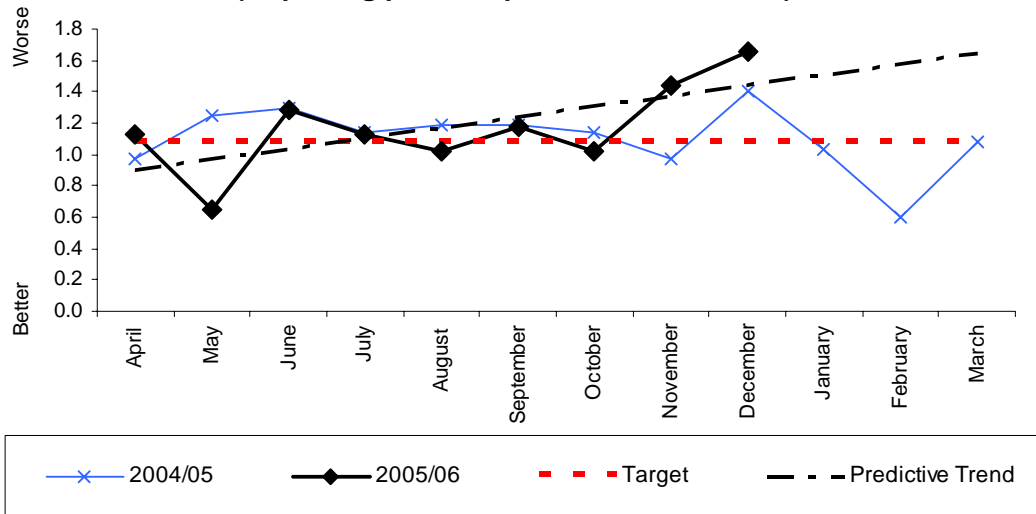
Yearly target	Will Authority achieve target? (Estimate using predictive trend)	Have current results improved since the same month last year?	Have current yearly results (including predictive trend) improved since last year?
26.4	√	√	√

Commentary



142(iii)

**The number of accidental fires in dwellings per 10,000 dwellings
(Reporting period April 04 - December 05)**



Monthly Stats (per 10,000 dwellings)

	Apr	May	June	July	Aug	Sept	Oct	Nov	Dec	Jan	Feb	Mar	YTD
2005	1.1	0.6	1.2	1.1	1.0	1.0	1.0	1.3	1.7				10.1
2004	1.0	1.2	1.3	1.1	1.2	1.2	1.1	1.0	1.4	1.0	0.6	1.1	13.2

Monthly Stats (actual incidents)

	Apr	May	June	July	Aug	Sept	Oct	Nov	Dec	Jan	Feb	Mar	YTD
2005	21	11	23	21	19	19	18	25	32				134
2004	18	23	24	21	22	22	21	18	26	19	11	20	245

Analysis

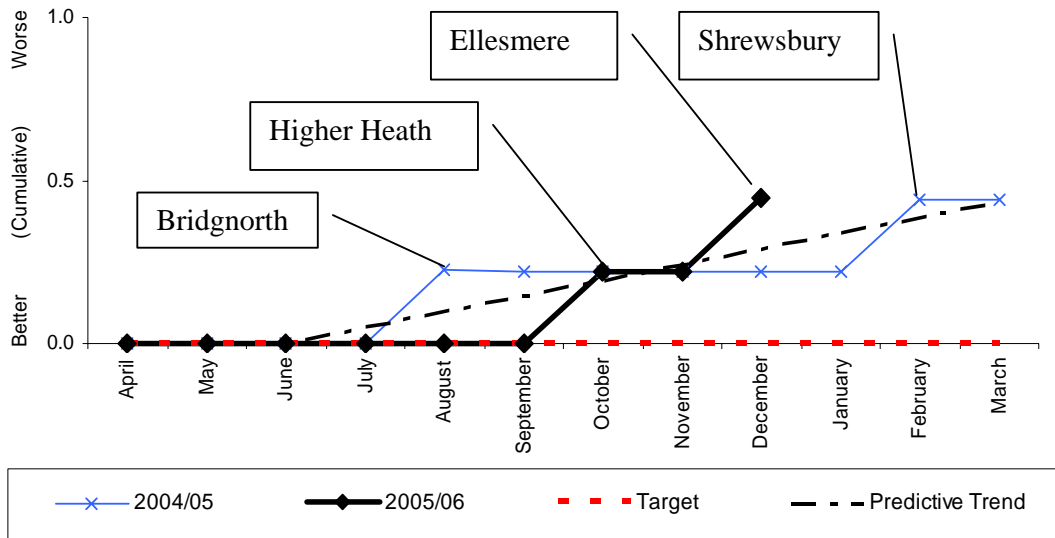
Yearly target	Will Authority achieve target? (Estimate using predictive trend)	Have current results improved since the same month last year?	Have current yearly results (including predictive trend) improved since last year?
13	√	X	√

Commentary



143(i)

**Number of deaths per 100,000 population arising from accidental dwelling fires per 100,000 population
(Reporting period April 04 - December 05)**



Monthly Stats (per 100,000 population)

	Apr	May	June	July	Aug	Sept	Oct	Nov	Dec	Jan	Feb	Mar	YTD
2005	0	0	0	0	0	0	0.22	0	0.22				0.45
2004	0	0	0	0	0.22	0	0	0	0	0	0.22	0	0.45

Monthly Stats (people)

	Apr	May	June	July	Aug	Sept	Oct	Nov	Dec	Jan	Feb	Mar	YTD
2005	0	0	0	0	0	0	1	0	1				2
2004	0	0	0	0	1	0	0	0	0	0	1	0	2

Analysis

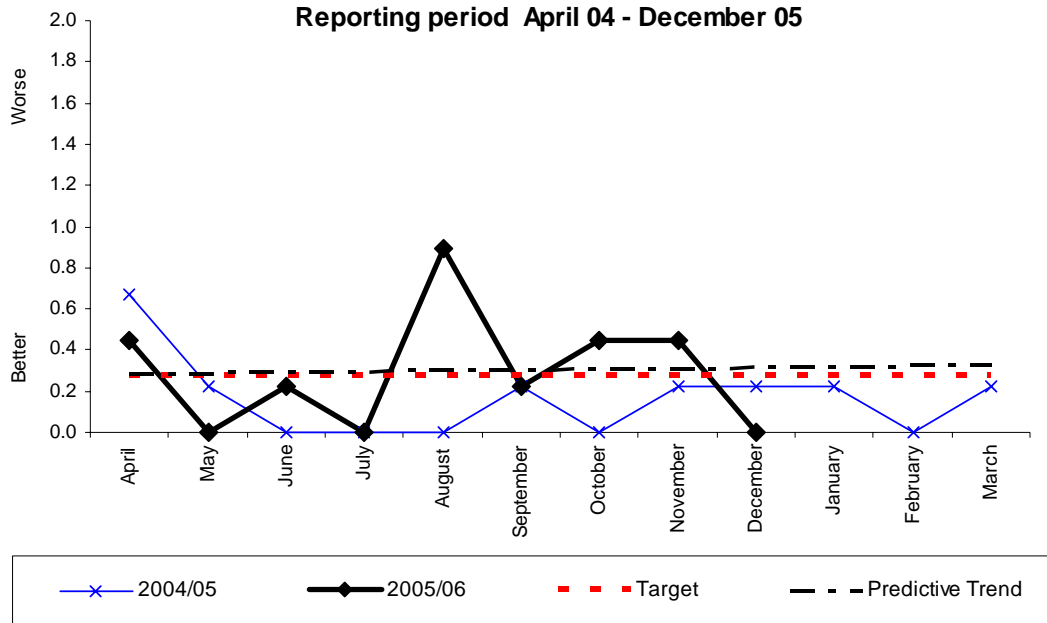
Yearly target	Will Authority achieve target? (Estimate using predictive trend)	Have current results improved since the same month last year?	Have current yearly results (including predictive trend) improved since last year?
0	X	X	X

Commentary



143(ii)

The number of injuries (excluding precautionary checks) arising from accidental fires in dwellings per 100,000 population
Reporting period April 04 - December 05



Monthly Stats (per 100,000 population)

	Apr	May	June	July	Aug	Sept	Oct	Nov	Dec	Jan	Feb	Mar	YTD
2005	0.45	0.00	0.22	0.00	0.89	0.22	0.45	0.45	0.22				2.67
2004	0.67	0.22	0	0	0	0.22	0	0.22	0.22	0.22	0	0.22	2.02

Monthly Stats (actual incidents)

	Apr	May	June	July	Aug	Sept	Oct	Nov	Dec	Jan	Feb	Mar	YTD
2005	2	0	1	0	4	1	2	2	1				13
2004	3	1	0	0	0	1	0	1	1	1	0	1	9

Analysis

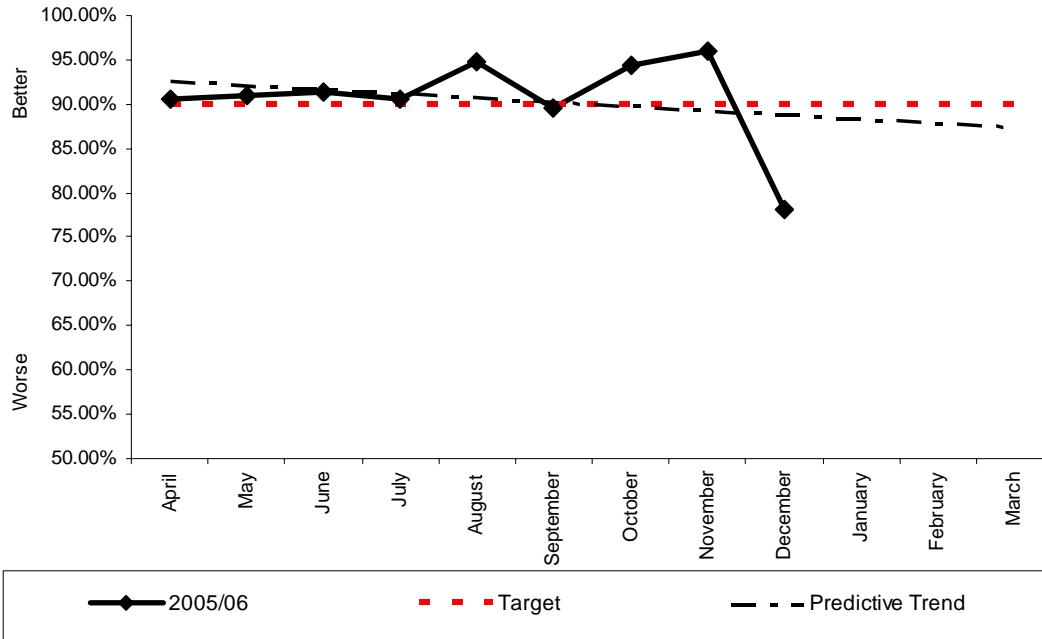
Yearly target	Will Authority achieve target? (Estimate using predictive trend)	Have current results improved since the same month last year?	Have current yearly results (including predictive trend) improved since last year?
3.30	X	X	X

Commentary

2005-06 Clun 1; Shifnal 2; Shrewsbury 6; Telford Central 2; Wellington 3
2004-05 Ludlow 1; Oswestry 1; Shrewsbury 3; Telford Central 4; Wellington 1



**The percentage of accidental dwelling fires confined to room of origin
(Reporting period April 05 - December 05)**



Monthly Stats (percentage)

	Apr	May	June	July	Aug	Sept	Oct	Nov	Dec	Jan	Feb	Mar
2005	90.5%	90.9%	91.3%	90.5%	94.7%	89.5%	94.5%	96.0%	78.1%			
2004	No previous data as BVPI was split into C and D risk areas											

Monthly Stats (actual incidents)

	Apr	May	June	July	Aug	Sept	Oct	Nov	Dec	Jan	Feb	Mar	YTD	%
2005	19/21	10/11	21/23	19/21	18/19	17/19	17/18	24/25	25/32				170/189	89.95
2004	No previous data as BVPI was split into C and D risk areas													

Analysis

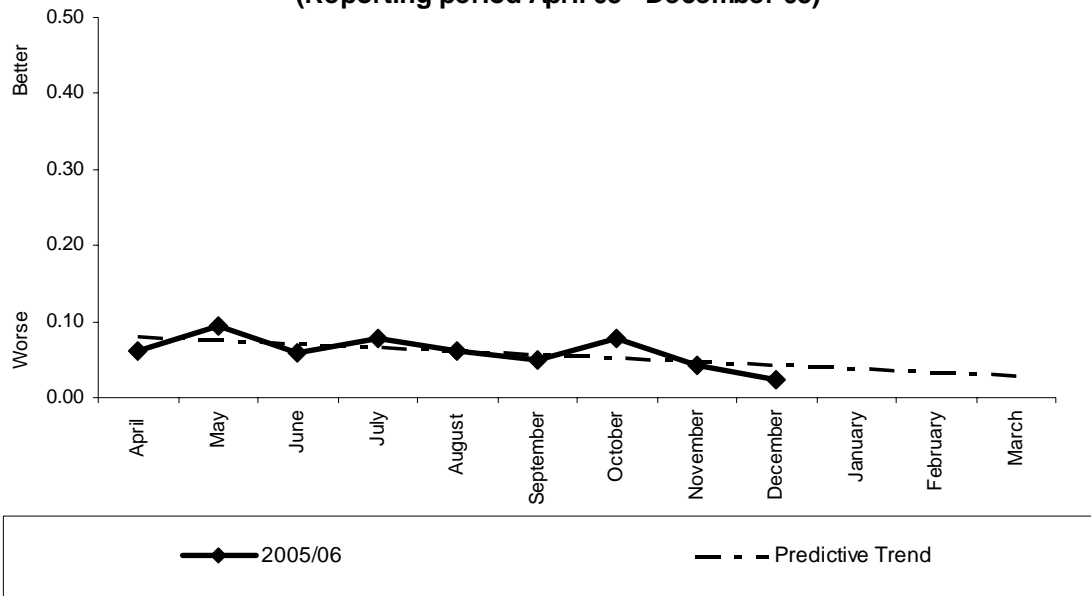
Yearly target	Will Authority achieve target? (Estimate using predictive trend)	Have current results improved since the same month last year?	Have current yearly results (including predictive trend) improved since last year?
90.0%	√	N/A	N/A

Commentary



146(i)

**The number of calls to malicious false alarms not attended per 1,000 population
(Reporting period April 05 - December 05)**



Monthly Stats (per 1,000 population)

	Apr	May	June	July	Aug	Sept	Oct	Nov	Dec	Jan	Feb	Mar	YTD
2005	0.06	0.09	0.06	0.08	0.06	0.05	0.08	0.04	0.02				0.55
2004	No previous data since this BVPI has been divided from 146 into 146(i) and 146(ii)												

Monthly Stats (actual incidents)

	Apr	May	June	July	Aug	Sept	Oct	Nov	Dec	Jan	Feb	Mar	YTD
2005	27	42	26	36	29	24	35	19	11				249
2004	No previous data since this BVPI has been divided from 146 into 146(i) and 146(ii)												

Analysis

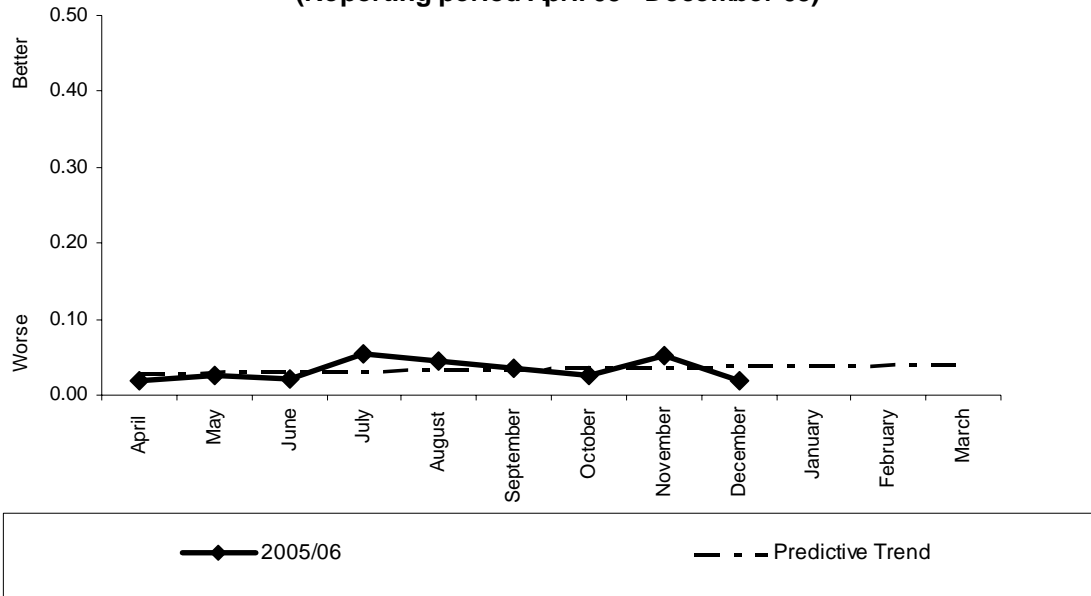
Yearly target	Will Authority achieve target? (Estimate using predictive trend)	Have current results improved since the same month last year?	Have current yearly results (including predictive trend) improved since last year?
No target set as no previous data	N/A	N/A	N/A

Commentary



146(ii)

The number of calls to malicious false alarms attended per 1,000 population (Reporting period April 05 - December 05)



Monthly Stats (per 1,000 population)

	Apr	May	June	July	Aug	Sept	Oct	Nov	Dec	Jan	Feb	Mar	YTD
2005	0.02	0.03	0.02	0.05	0.04	0.03	0.02	0.05	0.02				0.28
2004	No previous data since this BVPI has been divided from 146 into 146(i) and 146(ii)												

Monthly Stats (actual incidents)

	Apr	May	June	July	Aug	Sept	Oct	Nov	Dec	Jan	Feb	Mar	YTD
2005	8	12	10	22	18	14	11	23	8				126
2004	No previous data since this BVPI has been divided from 146 into 146(i) and 146(ii)												

Analysis

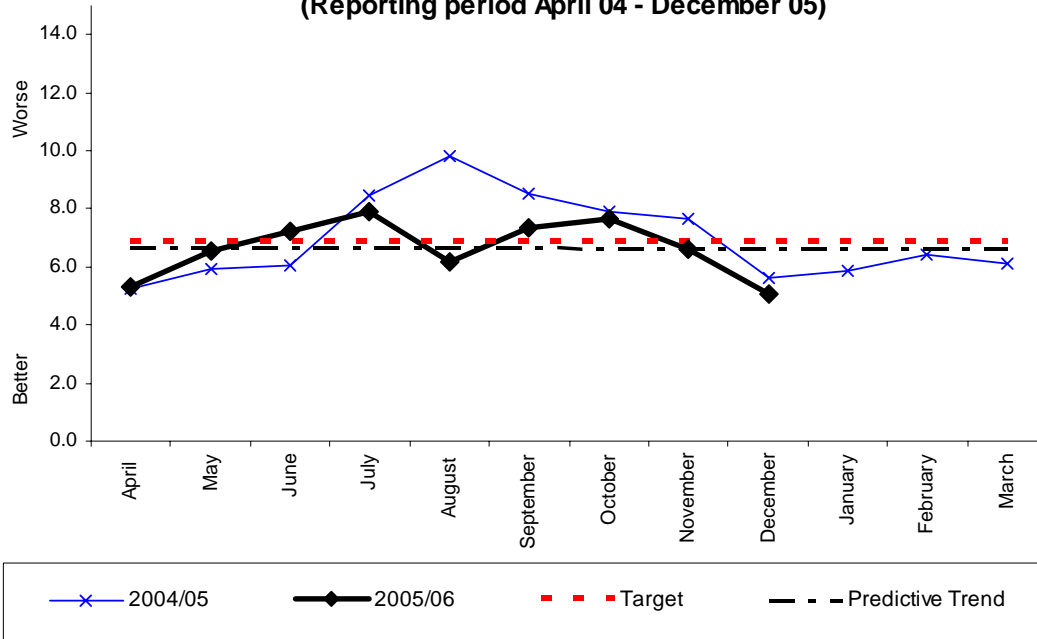
Yearly target	Will Authority achieve target? (Estimate using predictive trend)	Have current results improved since the same month last year?	Have current yearly results (including predictive trend) improved since last year?
No target set as no previous data	N/A	N/A	N/A

Commentary



149(i)

The number of false alarms caused by automatic fire detection apparatus per 1,000 non-domestic properties (Reporting period April 04 - December 05)



Monthly Stats (per 1,000 non-domestic properties)

	Apr	May	June	July	Aug	Sept	Oct	Nov	Dec	Jan	Feb	Mar	YTD
2005	5.3	6.5	7.2	7.9	6.2	7.3	7.7	6.6	5.1				59.78
2004	5.2	5.9	6.0	8.4	9.8	8.5	7.9	7.6	5.6	5.8	6.4	6.1	83.2

Monthly Stats (actual incidents)

	Apr	May	June	July	Aug	Sept	Oct	Nov	Dec	Jan	Feb	Mar	YTD
2005	80	99	109	120	94	111	116	100	77				906
2004	79	89	91	127	148	128	119	115	85	88	97	92	1258

Analysis

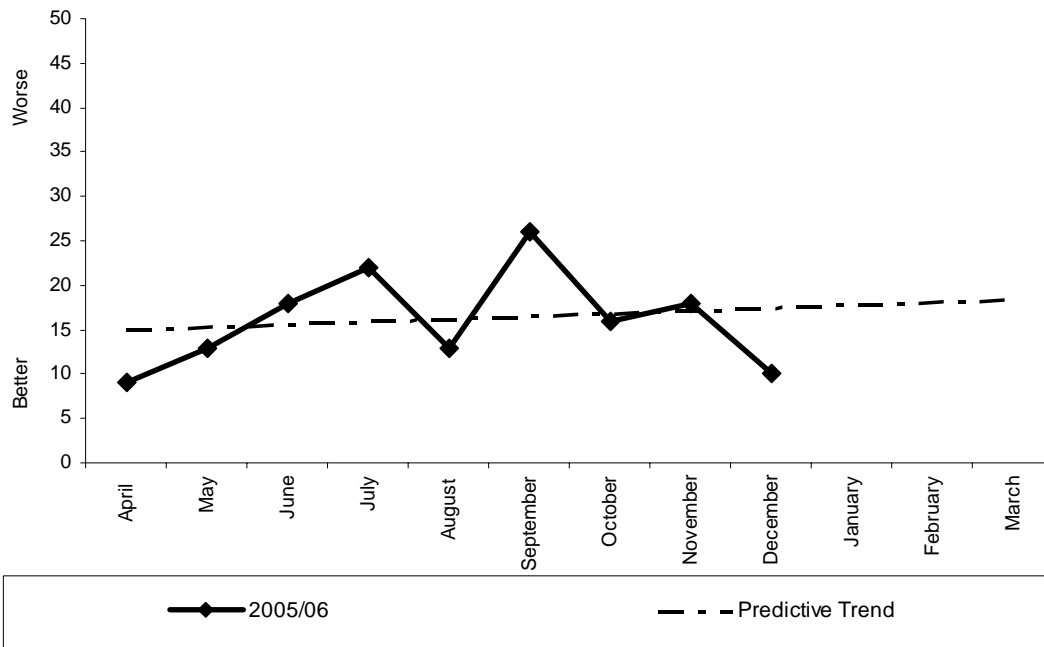
Yearly target	Will Authority achieve target? (Estimate using predictive trend)	Have current results improved since the same month last year?	Have current yearly results (including predictive trend) improved since last year?
82.0	√	√	√

Commentary
Please note that domestic properties have been removed from the reporting of this BVPI for 2005/06. As such, previous years are not directly comparable.



149(ii)

**The number of those properties with more than 1 attendance
(Reporting period April 05 - December 05)**



Monthly Stats (per 1,000 non-domestic properties)

	Apr	May	June	July	Aug	Sept	Oct	Nov	Dec	Jan	Feb	Mar	YTD
2005	0.02	0.03	0.04	0.05	0.03	0.06	0.04	0.04	0.02				0.32
2004	No previous data as this is a new BVPI												

Monthly Stats (actual incidents)

	Apr	May	June	July	Aug	Sept	Oct	Nov	Dec	Jan	Feb	Mar	YTD
2005	9	13	18	22	13	26	16	18	10				145
2004	No previous data as this is a new BVPI												

Analysis

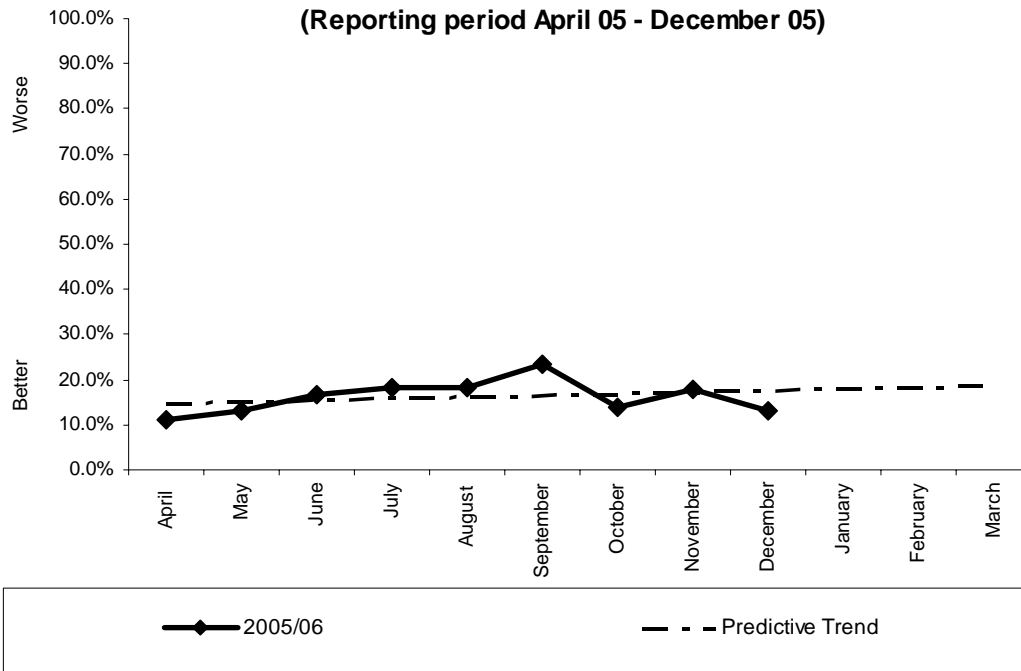
Yearly target	Will Authority achieve target? (Estimate using predictive trend)	Have current results improved since the same month last year?	Have current yearly results (including predictive trend) improved since last year?
No target set as no previous data	N/A	N/A	N/A

Commentary



149(iii)

**The percentage of calls which are to a property with more than 1 attendance
(Reporting period April 05 - December 05)**



Monthly Stats (percentage)

	Apr	May	June	July	Aug	Sept	Oct	Nov	Dec	Jan	Feb	Mar
2005	11.3	13.0	16.5	18.3	13.8	23.4	13.8	18.0	12.9			
2004	No previous data as this is a new BVPI											

Monthly Stats (actual incidents)

	Apr	May	June	July	Aug	Sept	Oct	Nov	Dec	Jan	Feb	Mar	YTD	%
2005	9/80	13/99	18/109	22/120	13/94	26/111	16/118	18/100	10/77				145/906	16.0
2004	No previous data as this is a new BVPI													

Analysis

Yearly target	Will Authority achieve target? (Estimate using predictive trend)	Have current results improved since the same month last year?	Have current yearly results (including predictive trend) improved since last year?
No target set as no previous data	N/A	N/A	N/A

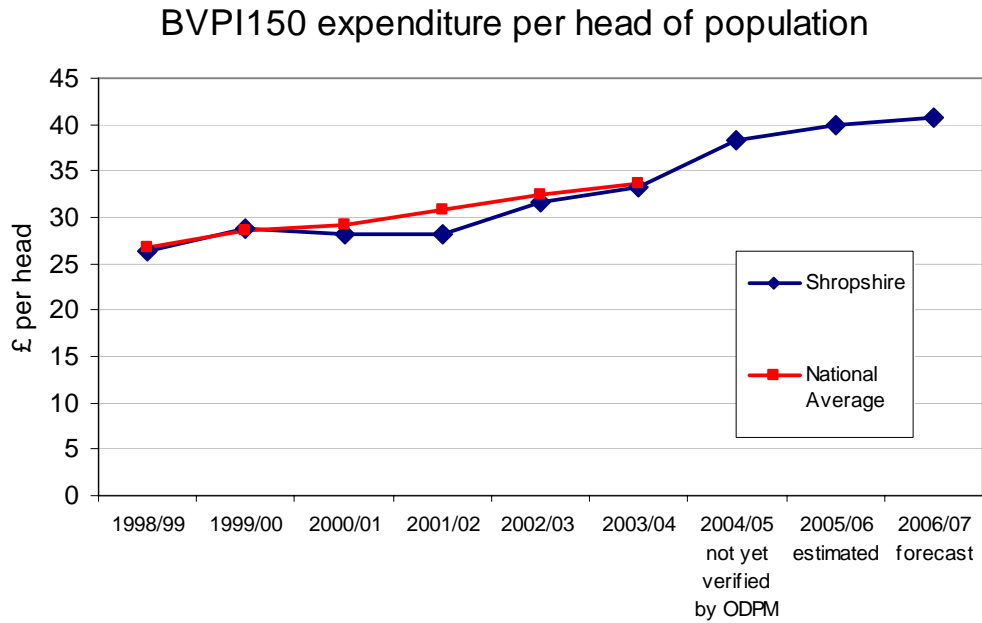
Commentary



150

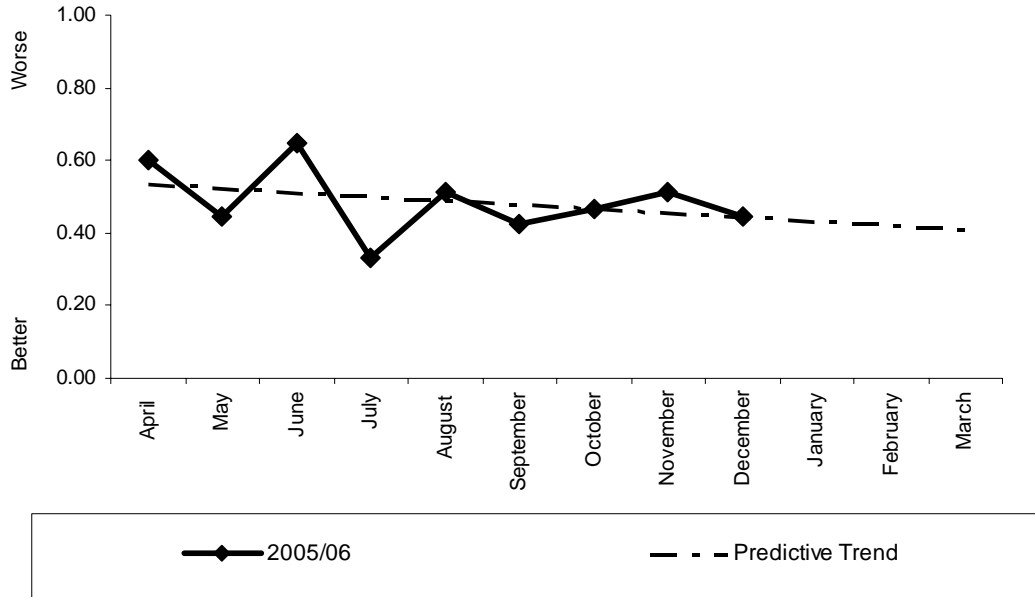
This BVPI is produced yearly and as such, the data will not be ready for display until the end of the fourth quarter of the year. This is taken from the CIPFA statistics.

BVPI 150 concerns the expenditure per head of population on the provision of fire and rescue services. For information purposes, a graph of historic verified data is shown.



206(i)

**The number of deliberate primary fires (excluding deliberate primary fires in vehicles) per 10,000 population
(Reporting period April 05 - December 05)**



Monthly Stats (per 10,000 population)

	Apr	May	June	July	Aug	Sept	Oct	Nov	Dec	Jan	Feb	Mar	YTD
2005	0.58	0.45	0.62	0.33	0.49	0.42	0.47	0.49	0.42				4.28
2004	No previous data as this is a new BVPI												

Monthly Stats (actual incidents)

	Apr	May	June	July	Aug	Sept	Oct	Nov	Dec	Jan	Feb	Mar	YTD
2005	26	20	28	15	22	19	21	22	19				192
2004	No previous data as this is a new BVPI												

Analysis

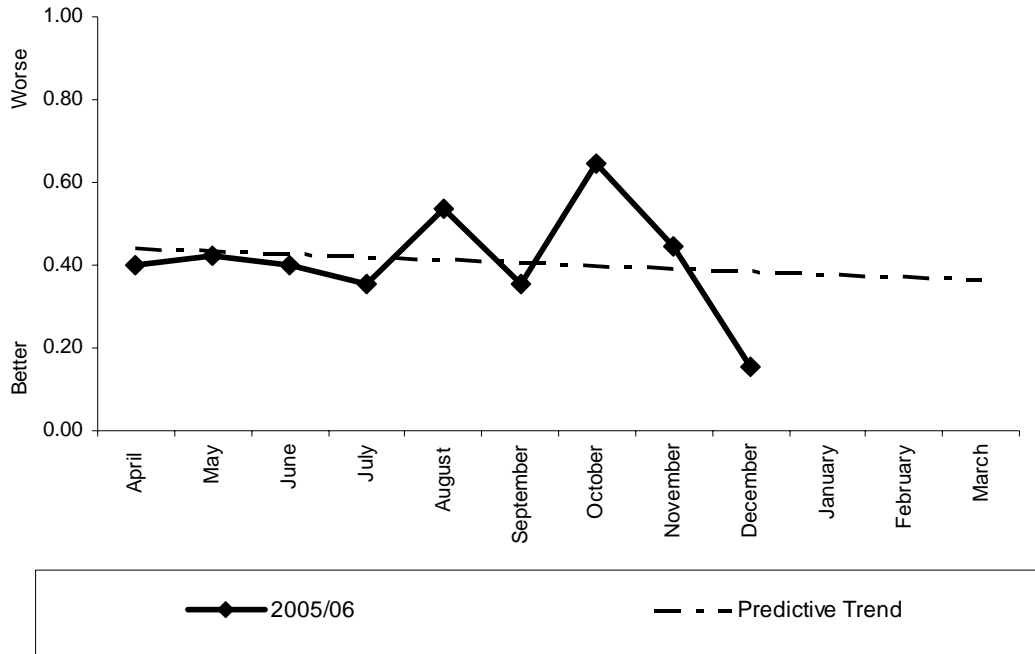
Yearly target	Will Authority achieve target? (Estimate using predictive trend)	Have current results improved since the same month last year?	Have current yearly results (including predictive trend) improved since last year?
No target set as no previous data	N/A	N/A	N/A

Commentary



206(ii)

**The number of deliberate primary fires in vehicles per 10,000 population
(Reporting period April 05 - December 05)**



Monthly Stats (per 10,000 population)

	Apr	May	June	July	Aug	Sept	Oct	Nov	Dec	Jan	Feb	Mar	YTD
2005	0.40	0.42	0.38	0.33	0.53	0.36	0.65	0.45	0.13				3.65
2004	No previous data as this is a new BVPI												

Monthly Stats (actual incidents)

	Apr	May	June	July	Aug	Sept	Oct	Nov	Dec	Jan	Feb	Mar	YTD
2005	18	19	17	15	24	16	29	20	6				164
2004	No previous data as this is a new BVPI												

Analysis

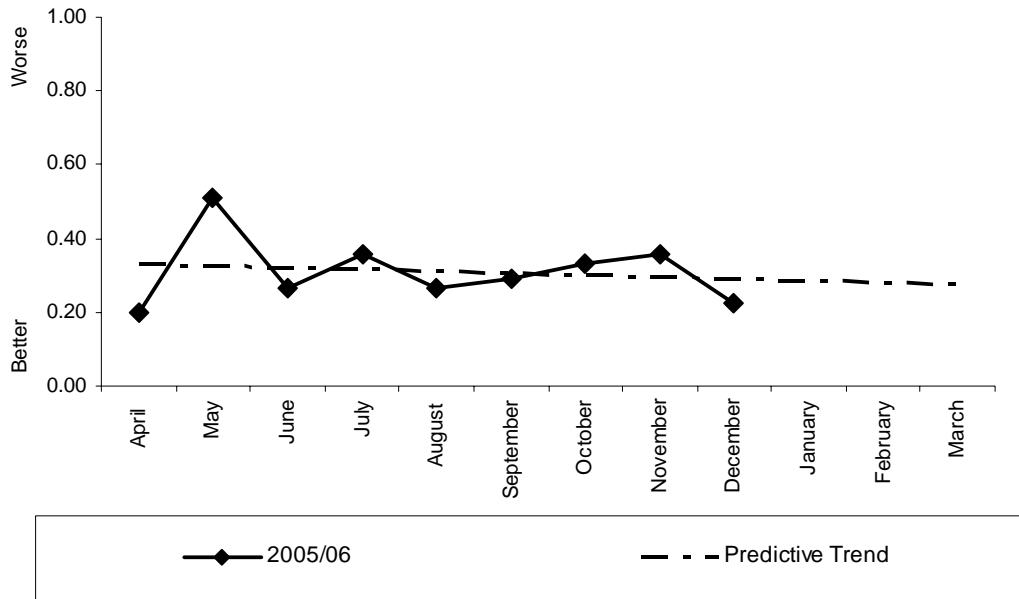
Yearly target	Will Authority achieve target? (Estimate using predictive trend)	Have current results improved since the same month last year?	Have current yearly results (including predictive trend) improved since last year?
No target set as no previous data	N/A	N/A	N/A

Commentary



206(iii)

**The number of deliberate secondary fires (excluding deliberate secondary fires in vehicles) per 10,000 population
(Reporting period April 05 - December 05)**



Monthly Stats (per 10,000 population)

	Apr	May	June	July	Aug	Sept	Oct	Nov	Dec	Jan	Feb	Mar	YTD
2005	0.20	0.51	0.27	0.36	0.27	0.29	0.33	0.36	0.25				2.83
2004	No previous data as this is a new BVPI												

Monthly Stats (actual incidents)

	Apr	May	June	July	Aug	Sept	Oct	Nov	Dec	Jan	Feb	Mar	YTD
2005	9	23	12	16	12	13	15	18	11				127
2004	No previous data as this is a new BVPI												

Analysis

Yearly target	Will Authority achieve target? (Estimate using predictive trend)	Have current results improved since the same month last year?	Have current yearly results (including predictive trend) improved since last year?
No target set as no previous data	N/A	N/A	N/A

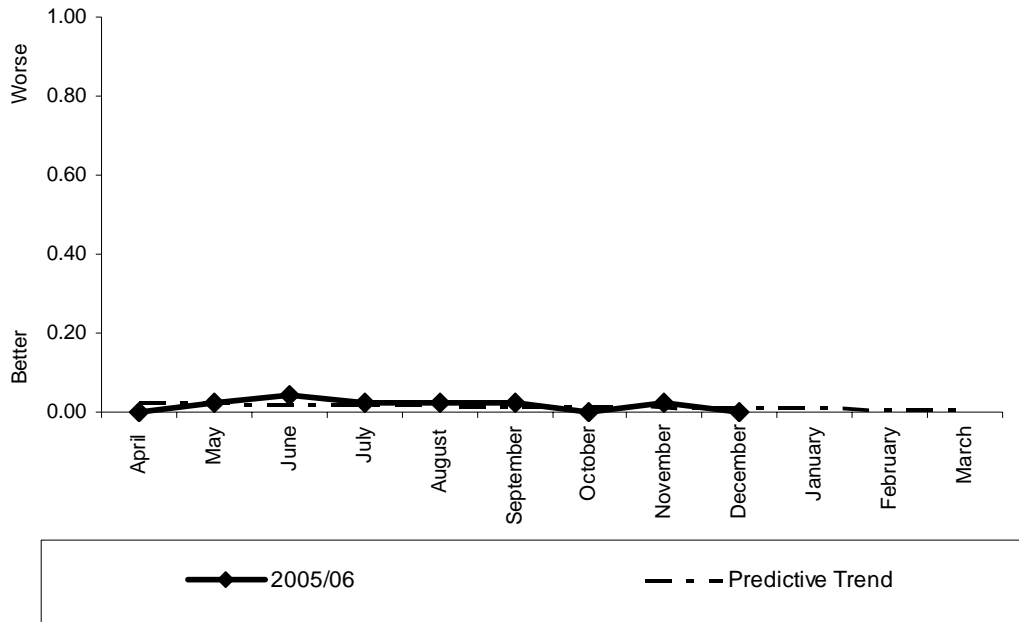
Commentary

--



206(iv)

**The number of deliberate secondary fires in vehicles per 10,000 population
(Reporting period April 05 - December 05)**



Monthly Stats (per 10,000 population)

	Apr	May	June	July	Aug	Sept	Oct	Nov	Dec	Jan	Feb	Mar	YTD
2005	0.00	0.02	0.04	0.02	0.04	0.02	0.04	0.02	0.00				0.22
2004	No previous data as this is a new BVPI												

Monthly Stats (actual incidents)

	Apr	May	June	July	Aug	Sept	Oct	Nov	Dec	Jan	Feb	Mar	YTD
2005	0	1	2	1	2	1	2	1	0				10
2004	No previous data as this is a new BVPI												

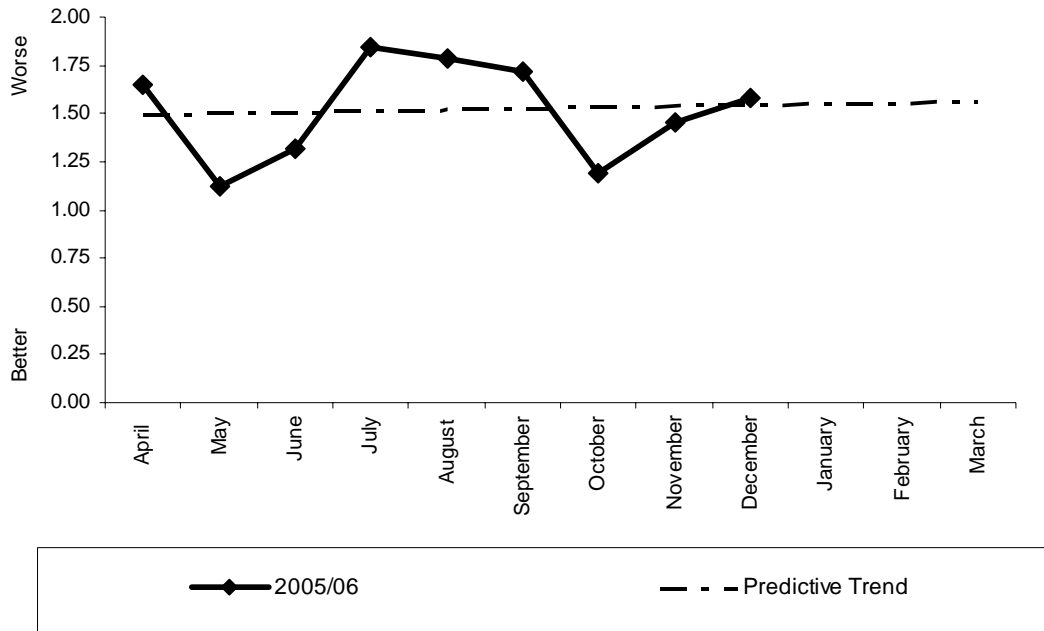
Analysis

Yearly target	Will Authority achieve target? (Estimate using predictive trend)	Have current results improved since the same month last year?	Have current yearly results (including predictive trend) improved since last year?
No target set as no previous data	N/A	N/A	N/A

Commentary



**The number of fires in non-domestic premises per 1,000 non-domestic premises
(Reporting period April 05 - December 05)**



Monthly Stats (per 10,000 population)

	Apr	May	June	July	Aug	Sept	Oct	Nov	Dec	Jan	Feb	Mar	YTD
2005	1.58	0.99	1.12	1.65	1.58	1.58	1.12	1.45	1.32				12.41
2004	No previous data as this is a new BVPI												

Monthly Stats (actual incidents)

	Apr	May	June	July	Aug	Sept	Oct	Nov	Dec	Jan	Feb	Mar	YTD
2005	24	15	17	25	24	24	17	22	20				188
2004	No previous data as this is a new BVPI												

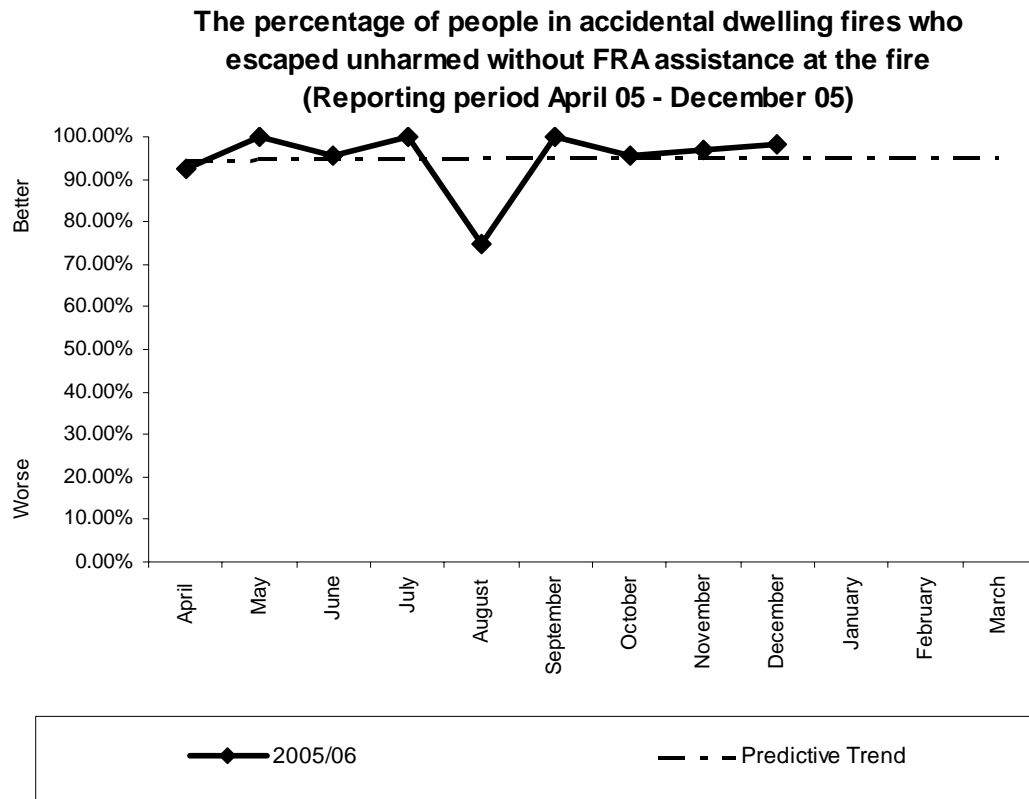
Analysis

Yearly target	Will Authority achieve target? (Estimate using predictive trend)	Have current results improved since the same month last year?	Have current yearly results (including predictive trend) improved since last year?
No target set as no previous data	N/A	N/A	N/A

Commentary

--





Monthly Stats (percentage)

	Apr	May	June	July	Aug	Sept	Oct	Nov	Dec	Jan	Feb	Mar
2005	92.3	100.0	95.5	100.0	78.0	100.0	95.5	96.8	98.0			
2004	No previous data as this is a new BVPI											

Monthly Stats (people/total)

	Apr	May	June	July	Aug	Sept	Oct	Nov	Dec	Jan	Feb	Mar	YTD	%
2005	24/26	12/12	42/44	18/18	12/16	24/24	21/22	30/31	50/51				233/244	95.5
2004	No previous data as this is a new BVPI													

Analysis

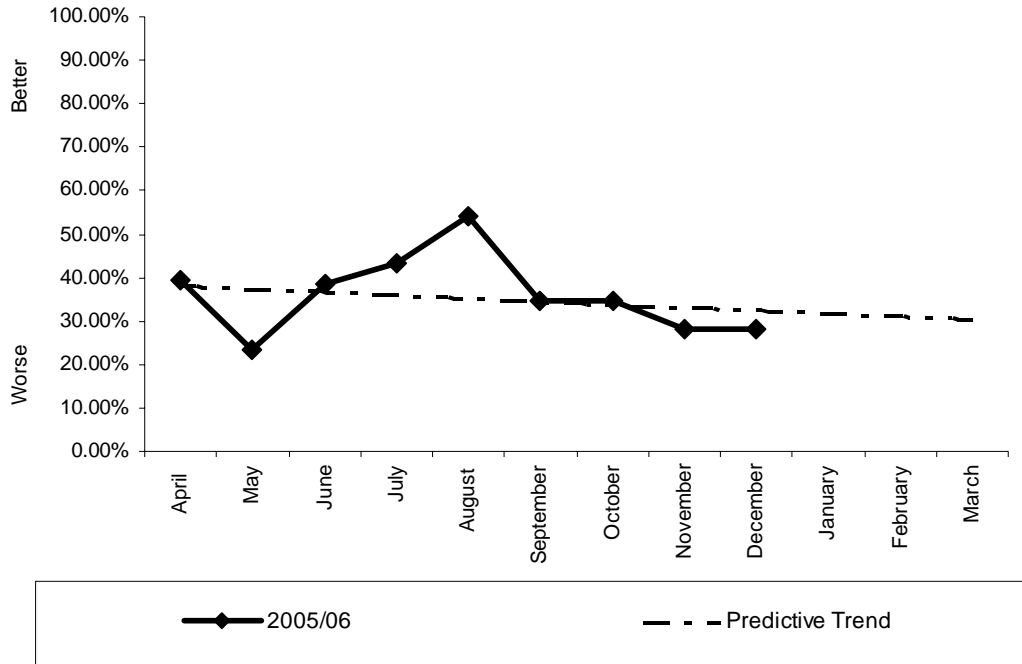
Yearly target	Will Authority achieve target? (Estimate using predictive trend)	Have current results improved since the same month last year?	Have current yearly results (including predictive trend) improved since last year?
No target set as no previous data	N/A	N/A	N/A

Commentary



209(i)

**The percentage of fires attended in dwellings where a smoke alarm had activated
(Reporting period April 05 - December 05)**



Monthly Stats (percentage)

	Apr	May	June	July	Aug	Sept	Oct	Nov	Dec	Jan	Feb	Mar
2005	39.3	25.0	40.0	43.5	54.2	34.8	33.3	31.0	27.5			
2004	No previous data as this is a new BVPI											

Monthly Stats (actual incidents/total dwelling fires)

	Apr	May	June	July	Aug	Sept	Oct	Nov	Dec	Jan	Feb	Mar	YTD	%
2005	11/28	4/16	12/30	10/23	13/24	8/23	7/21	9/29	11/40				85/234	36.3
2004	No previous data as this is a new BVPI													

Analysis

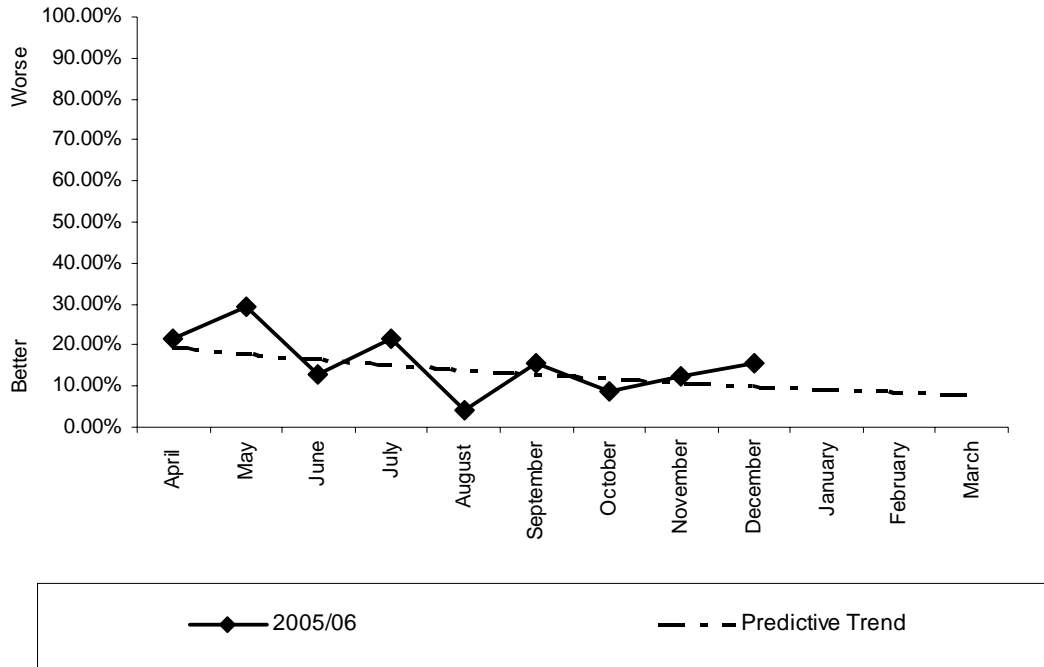
Yearly target	Will Authority achieve target? (Estimate using predictive trend)	Have current results improved since the same month last year?	Have current yearly results (including predictive trend) improved since last year?
No target set as no previous data	N/A	N/A	N/A

Commentary



209(ii)

**The percentage of fires attended in dwellings where a smoke alarm was fitted but did not activate
(Reporting period April 05 - December 05)**



Monthly Stats (percentage)

	Apr	May	June	July	Aug	Sept	Oct	Nov	Dec	Jan	Feb	Mar
2005	21.4	31.3	13.3	21.7	4.2	17.4	9.5	13.8	15.0			
2004	No previous data as this is a new BVPI											

Monthly Stats (actual incidents/total)

	Apr	May	June	July	Aug	Sept	Oct	Nov	Dec	Jan	Feb	Mar	YTD	%
2005	6/28	5/16	4/30	5/23	1/24	4/23	2/21	4/29	6/40				37/234	15.8
2004	No previous data as this is a new BVPI													

Analysis

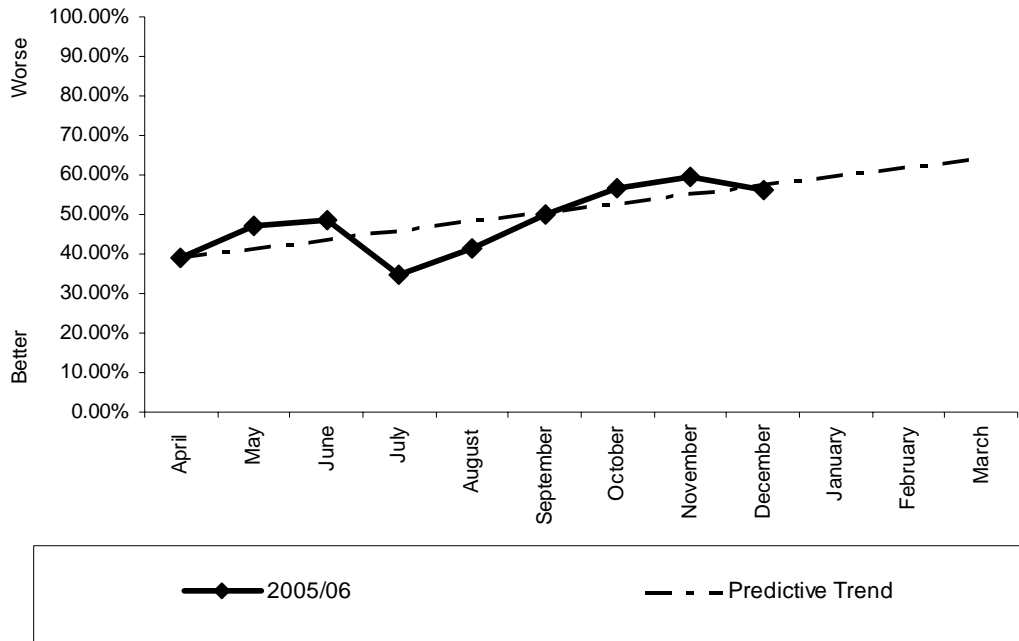
Yearly target	Will Authority achieve target? (Estimate using predictive trend)	Have current results improved since the same month last year?	Have current yearly results (including predictive trend) improved since last year?
No target set as no previous data	N/A	N/A	N/A

Commentary



209(iii)

**The percentage of fires attended in dwellings where no smoke alarm was fitted
(Reporting period April 05 - December 05)**



Monthly Stats (percentage)

	Apr	May	June	July	Aug	Sept	Oct	Nov	Dec	Jan	Feb	Mar
2005	39.3	43.8	46.7	34.8	41.7	47.8	57.1	55.1	57.5			
2004	No previous data as this is a new BVPI											

Monthly Stats (actual incidents/total)

	Apr	May	June	July	Aug	Sept	Oct	Nov	Dec	Jan	Feb	Mar	YTD	%
2005	11/28	7/16	14/30	8/23	10/24	11/23	12/21	16/29	23/40				112/234	47.9
2004	No previous data as this is a new BVPI													

Analysis

Yearly target	Will Authority achieve target? (Estimate using predictive trend)	Have current results improved since the same month last year?	Have current yearly results (including predictive trend) improved since last year?
No target set as no previous data	N/A	N/A	N/A

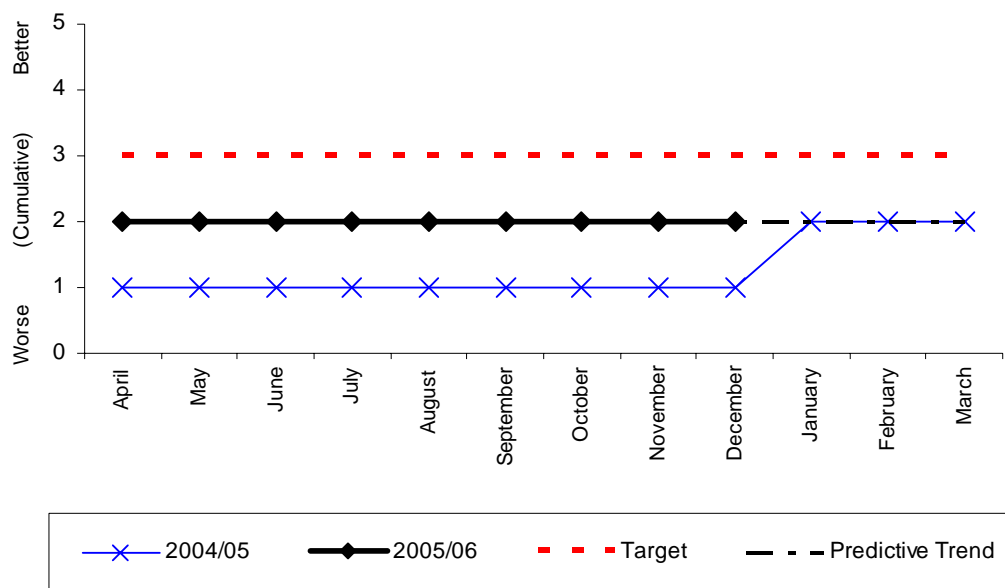
Commentary



Corporate Health Indicators

2a

The equality standard for local government (Reporting period Quarter 1 2004 - Quarter 3 2005)



Monthly Stats (level)

	Apr	May	June	July	Aug	Sept	Oct	Nov	Dec	Jan	Feb	Mar
2005		2			2			2				
2004		1			1			1			2	

Monthly Stats (actual incidents)

	Apr	May	June	July	Aug	Sept	Oct	Nov	Dec	Jan	Feb	Mar
2005		-			-			-				
2004		-			-			-			-	

Analysis

Yearly target	Will Authority achieve target? (Estimate using predictive trend)	Have current results improved since the same month last year?	Have current yearly results (including predictive trend) improved since last year?
3	X	√	√

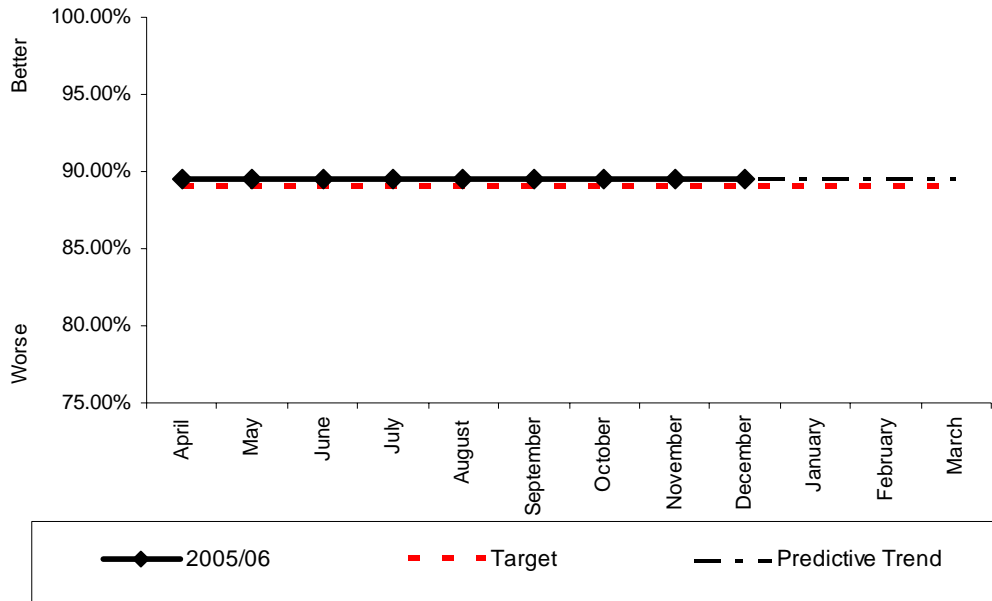
Commentary

The Equality and Diversity officer will review this by September 2006.



2b

**The duty to promote race equality
(Reporting period Quarter 1 2005 - Quarter 3 2005)**



Monthly Stats (percentage)

	Apr	May	June	July	Aug	Sept	Oct	Nov	Dec	Jan	Feb	Mar
2005	89%			89%			89%					
2004	No previous data as this is a new BVPI											

Monthly Stats (Out of 19 qualities)

	Apr	May	June	July	Aug	Sept	Oct	Nov	Dec	Jan	Feb	Mar
2005	17			17			17					
2004	No previous data as this is a new BVPI											

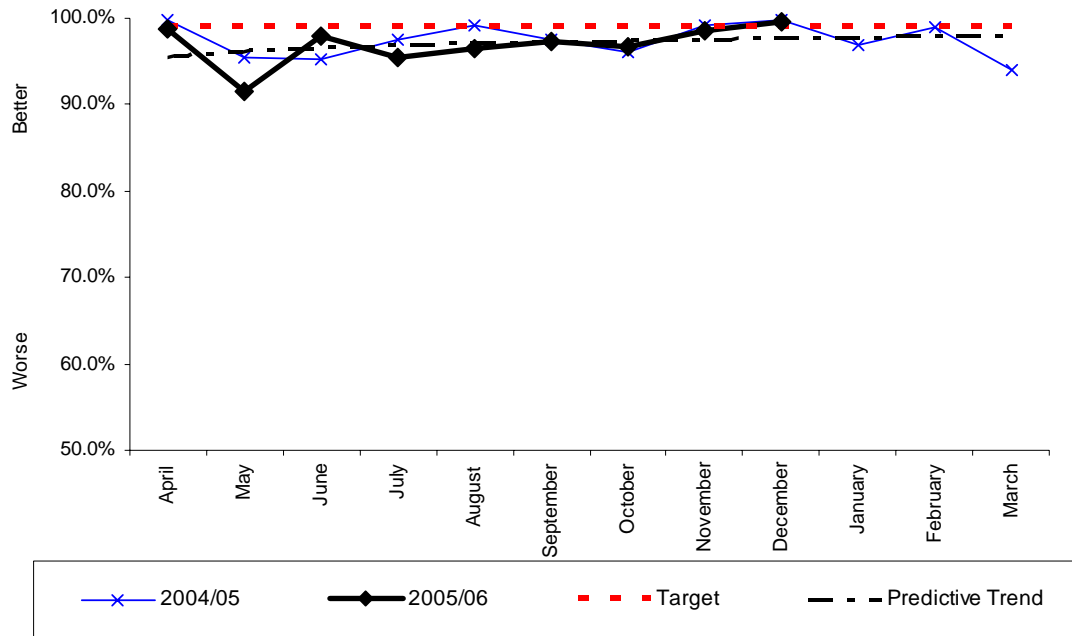
Analysis

Yearly target	Will Authority achieve target? (Estimate using predictive trend)	Have current results improved since the same month last year?	Have current yearly results (including predictive trend) improved since last year?
89%	√	N/A	N/A

Commentary



**The percentage of undisputed invoices which were paid in 30 days
(Reporting period April 04 - December 05)**



Monthly Stats (percentage)

	Apr	May	June	July	Aug	Sept	Oct	Nov	Dec	Jan	Feb	Mar
2005	98.8%	91.4%	98.0%	95.5%	96.5%	97.3%	96.6%	98.5%	99.7%			
2004	99.7%	95.4%	95.3%	97.6%	99.2%	97.6%	96.0%	99.2%	99.7%	96.9%	99.0%	94.0%

Monthly Stats (invoices/total)

	Apr	May	June	July	Aug	Sept	Oct	Nov	Dec	Jan	Feb	Mar
2005	418/423	310/339	342/349	382/400	388/402	398/409	375/388	321/326	310/311			
2004	Data not stored locally (to be requested from the County Council if desired)											

YTD	%
3244/3347	96.9

Analysis

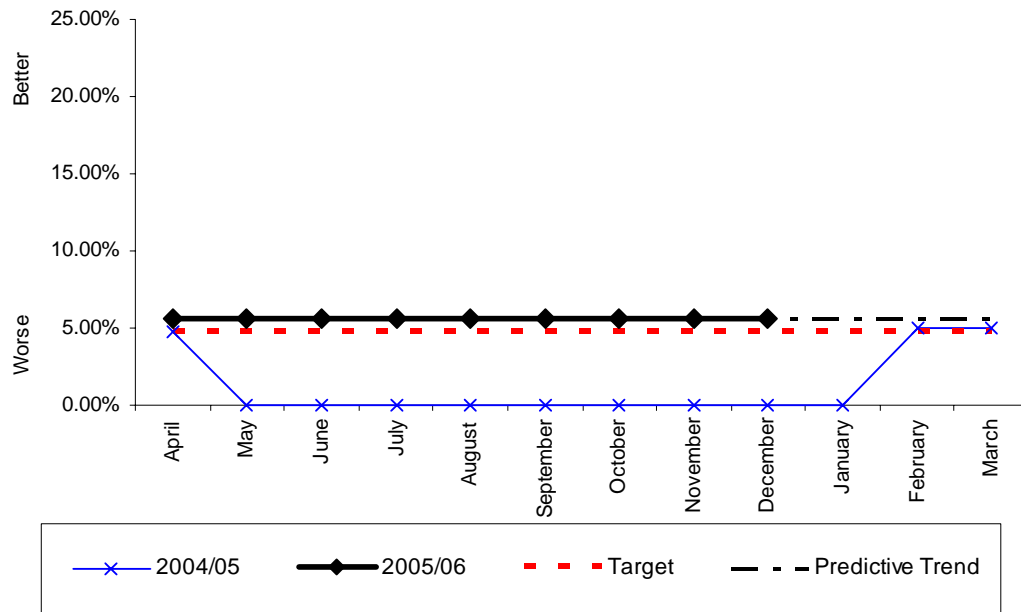
Yearly target	Will Authority achieve target? (Estimate using predictive trend)	Have current results improved since the same month last year?	Have current yearly results (including predictive trend) improved since last year?
99%	X	X	X

Commentary
 "The number of invoices for commercial goods and services within mutually agreed term or 30 days if such terms do not exist"
 Source ODPM Best Value Performance Indicators: 2005/06



11(i)

**The percentage of top 5% of earners that are women
(Reporting period April 04 - December 05)**



Monthly Stats (percentage)

	Apr	May	June	July	Aug	Sept	Oct	Nov	Dec	Jan	Feb	Mar
2005	5.56%	5.56%	5.56%	5.56%	5.56%	5.56%	5.56%	5.56				
2004	4.76%	0%	0%	0%	0%	0%	0%	0%	0%	0%	5.00%	5.00%

Monthly Stats (people)

	Apr	May	June	July	Aug	Sept	Oct	Nov	Dec	Jan	Feb	Mar
2005	1	1	1	1	1	1	1	1	1			
2004	1	0	0	0	0	0	0	0	0	0	1	1

Analysis

Yearly target	Will Authority achieve target? (Estimate using predictive trend)	Have current results improved since the same month last year?	Have current yearly results (including predictive trend) improved since last year?
4.7%	√	√	√

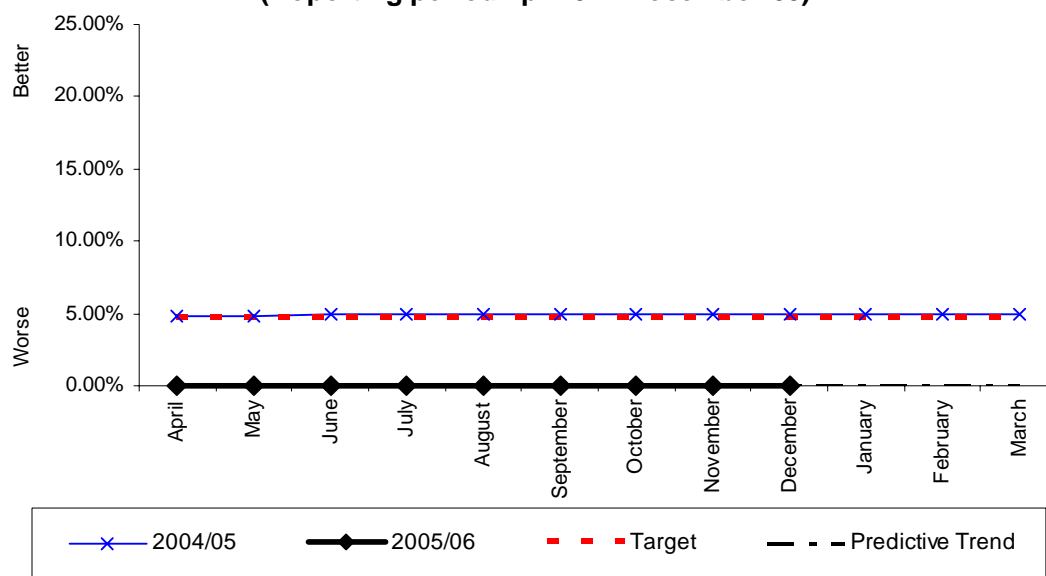
Commentary

The Authority has 18 staff within the top 5% earnings band of which there is 1 woman.



11(ii)

**The percentage of top 5% earners from ethnic minority communities
(Reporting period April 04 - December 05)**



Monthly Stats (percentage)

	Apr	May	June	July	Aug	Sept	Oct	Nov	Dec	Jan	Feb	Mar
2005	0%	0%	0%	0%	0%	0%	0%	0%	0%			
2004	4.76%	4.76%	5.00%	5.00%	5.00%	5.00%	5.00%	5.00%	5.00%	5.00%	5.00%	5.00%

Monthly Stats (people)

	Apr	May	June	July	Aug	Sept	Oct	Nov	Dec	Jan	Feb	Mar
2005	0	0	0	0	0	0	0	0	0			
2004	1	1	1	1	1	1	1	1	1	1	1	1

Analysis

Yearly target	Will Authority achieve target? (Estimate using predictive trend)	Have current results improved since the same month last year?	Have current yearly results (including predictive trend) improved since last year?
4.7%	X	X	X

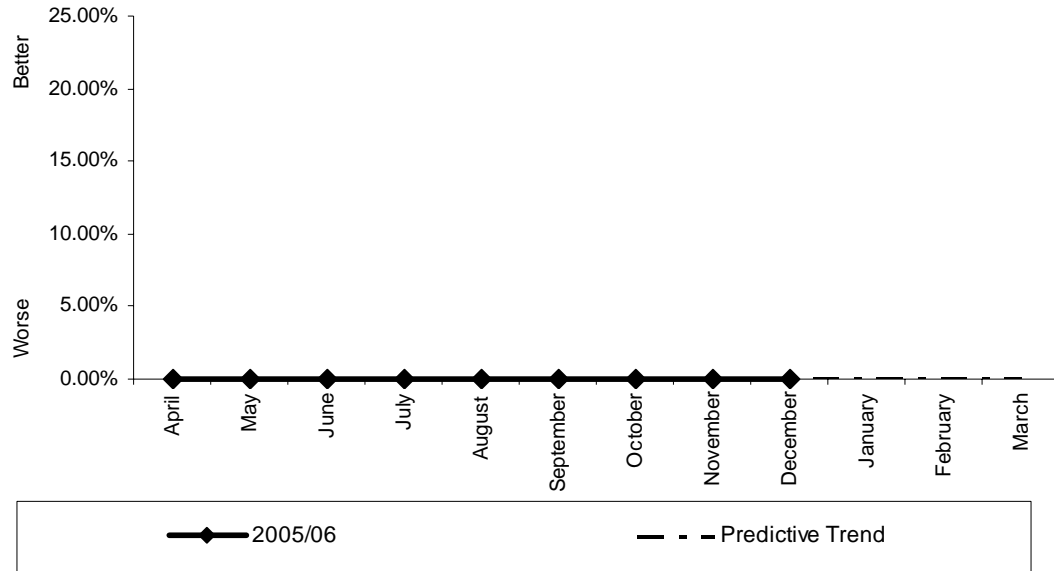
Commentary

The Authority has 18 staff within the top 5% earnings band of which there is 1 classified as from an ethnic minority community, but took up post on 1st February 2006, and therefore does not appear in quarters 1 to 3.



11(iii)

**The percentage of top 5% earners that are disabled
(Reporting period April 05 - December 05)**



Monthly Stats (percentage)

	Apr	May	June	July	Aug	Sept	Oct	Nov	Dec	Jan	Feb	Mar
2005	0%	0%	0%	0%	0%	0%	0%	0%	0%			
2004	No previous data as this is a new BVPI											

Monthly Stats (people)

	Apr	May	June	July	Aug	Sept	Oct	Nov	Dec	Jan	Feb	Mar
2005	0	0	0	0	0	0	0	0	0			
2004	No previous data as this is a new BVPI											

Analysis

Yearly target	Will Authority achieve target? (Estimate using predictive trend)	Have current results improved since the same month last year?	Have current yearly results (including predictive trend) improved since last year?
No target set as no previous data	N/A	N/A	N/A

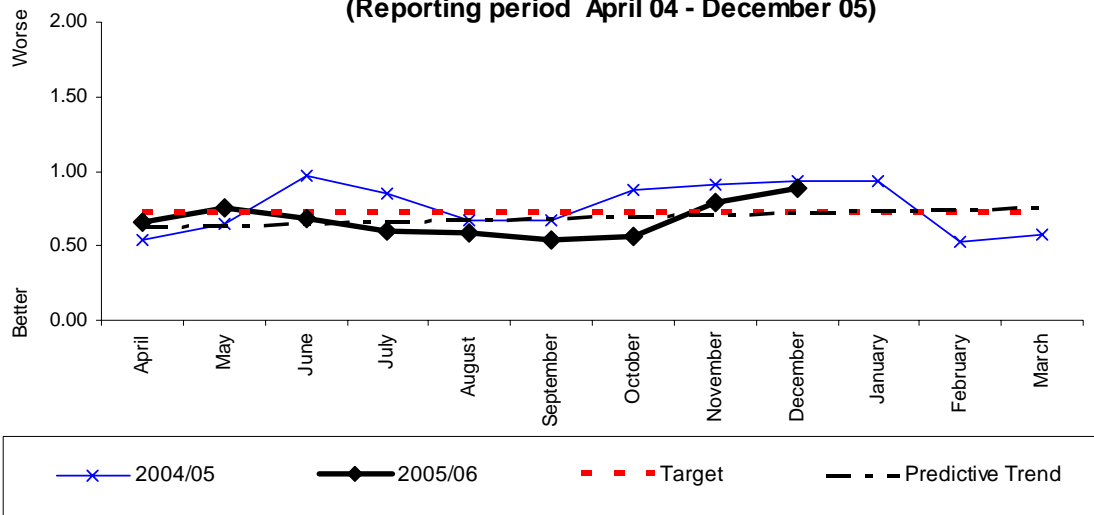
Commentary

The Authority has 18 staff within the top 5% earnings band of which there are currently none classed as disabled.



12(i)

**The proportion of working days/shifts lost due to sickness absence by wholetime uniformed staff
(Reporting period April 04 - December 05)**



Monthly Stats (days)

	Apr	May	June	July	Aug	Sept	Oct	Nov	Dec	Jan	Feb	Mar	YTD
2005	0.65	0.75	0.69	0.60	0.59	0.54	0.56	0.79	0.89				6.05
2004	0.54	0.65	0.97	0.85	0.67	0.67	0.88	0.91	0.93	0.93	0.53	0.57	9.09

Monthly Stats (actual)

	Apr	May	June	July	Aug	Sept	Oct	Nov	Dec	Jan	Feb	Mar	YTD
2005	149	172	159	136	135	122	127	180	203				1383
2004	114	136	204	179	139	142	186	193	197	197	112	121	1920

Analysis

Yearly target	Will Authority achieve target? (Estimate using predictive trend)	Have current results improved since the same month last year?	Have current yearly results (including predictive trend) improved since last year?
8.6	√	√	√

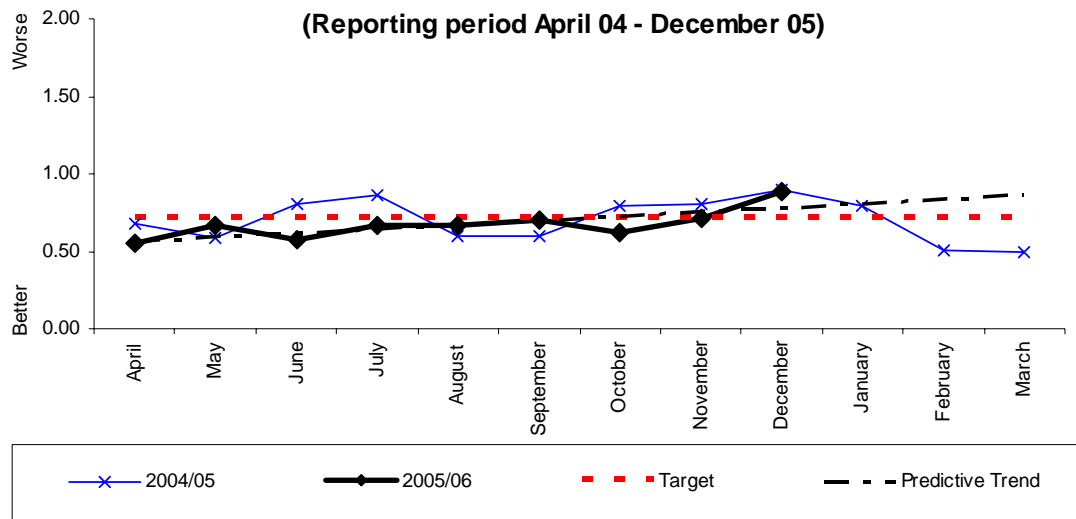
Commentary



12(ii)

The proportion of working days/shifts lost due to sickness absence by all staff

(Reporting period April 04 - December 05)



Monthly Stats (days)

	Apr	May	June	July	Aug	Sept	Oct	Nov	Dec	Jan	Feb	Mar	YTD
2005	0.57	0.67	0.57	0.67	0.67	0.70	0.62	0.72	0.88				6.06
2004	0.68	0.59	0.81	0.86	0.60	0.60	0.79	0.80	0.90	0.80	0.51	0.50	8.42

Monthly Stats (actual)

	Apr	May	June	July	Aug	Sept	Oct	Nov	Dec	Jan	Feb	Mar	YTD
2005	157	189	166	189	190	199	176	203	250				1719
2004	190	165	225	239	168	169	223	227	255	226	144	141	2372

Analysis

Yearly target	Will Authority achieve target? (Estimate using predictive trend)	Have current results improved since the same month last year?	Have current yearly results (including predictive trend) improved since last year?
8.6	√	√	√

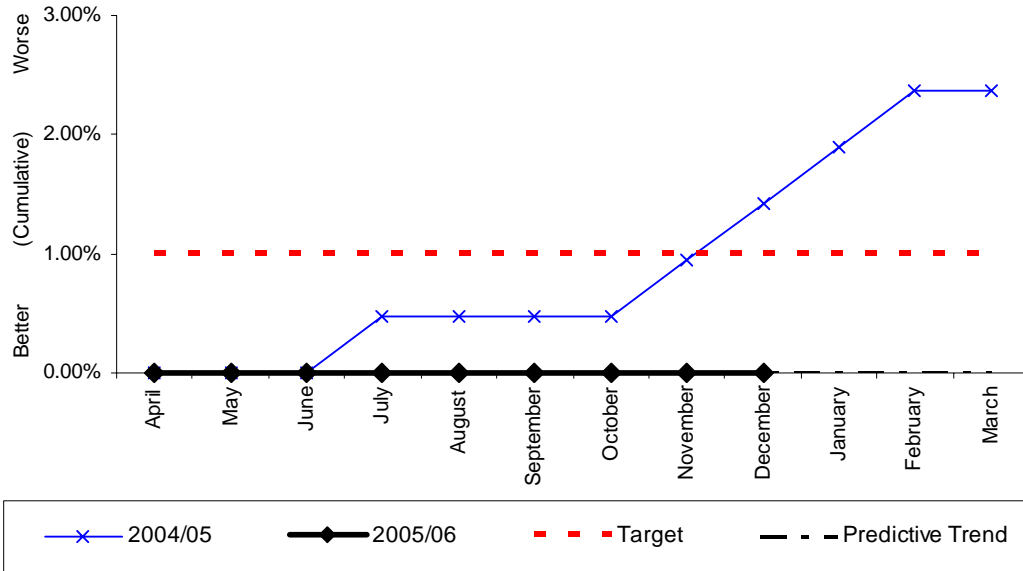
Commentary

--



15(i)

**Wholetime fire-fighter ill-health retirements as a percentage of the total workforce
(Reporting period April 04 - December 05)**



Monthly Stats (percentage)

	Apr	May	June	July	Aug	Sept	Oct	Nov	Dec	Jan	Feb	Mar	YTD
2005	0%	0%	0%	0%	0%	0%	0%	0%	0%				0%
2004	0%	0%	0%	0.48%	0%	0%	0%	0.47%	0.47%	0.47%	0.47%	0%	2.36%

Monthly Stats (people)

	Apr	May	June	July	Aug	Sept	Oct	Nov	Dec	Jan	Feb	Mar	YTD
2005	0	0	0	0	0	0	0	0	0				0
2004	0	0	0	1	0	0	0	1	1	1	1	0	4

Analysis

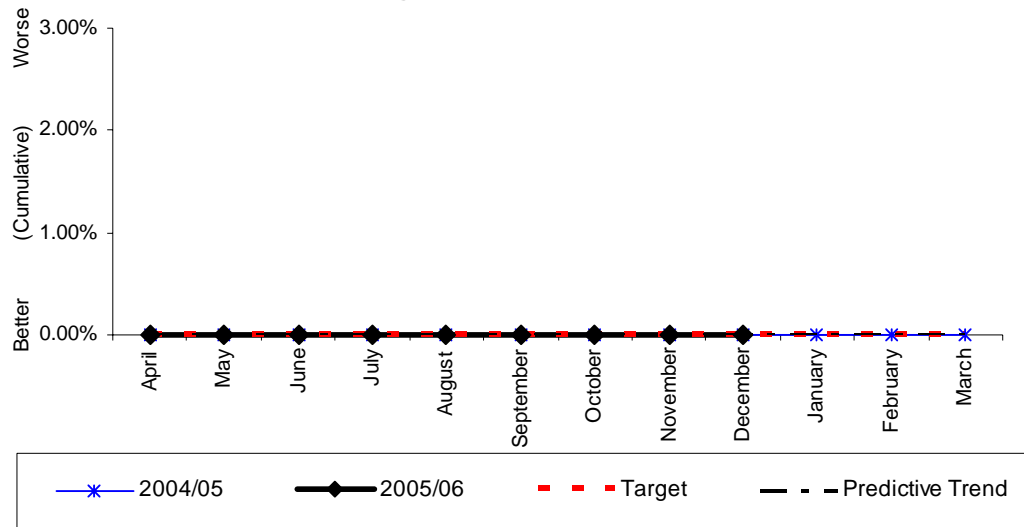
Yearly target	Will Authority achieve target? (Estimate using predictive trend)	Have current results improved since the same month last year?	Have current yearly results (including predictive trend) improved since last year?
1.0%	√	√	√

Commentary



15(ii)

**Control and non-uniformed ill-health retirements as a percentage of the total workforce
(Reporting period April 04 - December 05)**



Monthly Stats (percentage)

	Apr	May	June	July	Aug	Sept	Oct	Nov	Dec	Jan	Feb	Mar	YTD
2005	0%	0%	0%	0%	0%	0%	0%	0%	0%				0%
2004	0%	0%	0%	0%	0%	0%	0%	0%	0%	0%	0%	0%	0%

Monthly Stats (people)

	Apr	May	June	July	Aug	Sept	Oct	Nov	Dec	Jan	Feb	Mar	YTD
2005	0	0	0	0	0	0	0	0	0				0
2004	0	0	0	0	0	0	0	0	0	0	0	0	0

Analysis

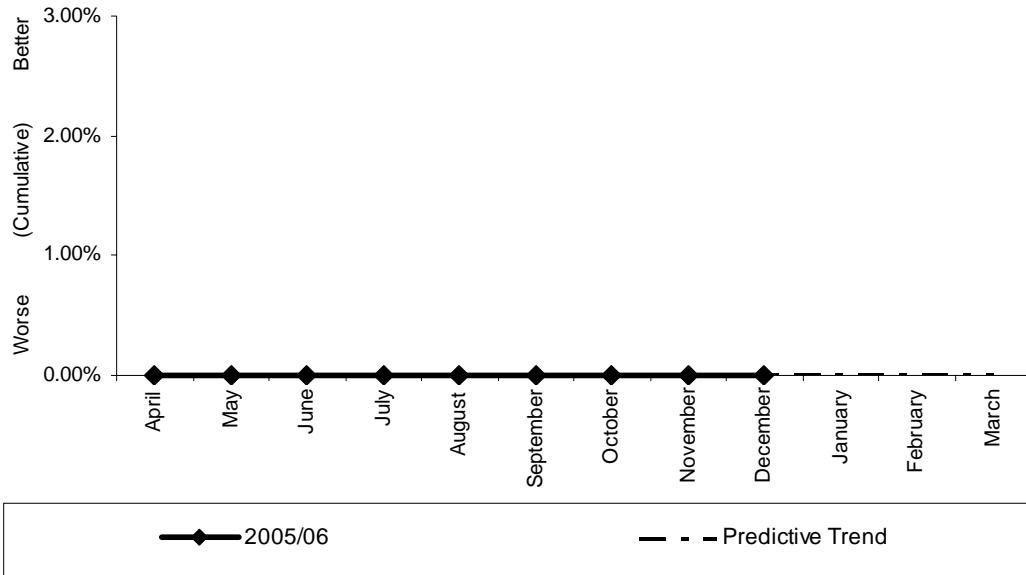
Yearly target	Will Authority achieve target? (Estimate using predictive trend)	Have current results improved since the same month last year?	Have current yearly results (including predictive trend) improved since last year?
0	√	=	=

Commentary



16a(i)

**The percentage of wholetime and retained duty system employees with a disability
(Reporting period April 05 - December 05)**



Monthly Stats (percentage)

	Apr	May	June	July	Aug	Sept	Oct	Nov	Dec	Jan	Feb	Mar
2005	0%	0%	0%	0%	0%	0%	0%	0%	0%			
2004	No previous data as this is a new BVPI											

Monthly Stats (people)

	Apr	May	June	July	Aug	Sept	Oct	Nov	Dec	Jan	Feb	Mar
2005	0	0	0	0	0	0	0	0	0			
2004	No previous data as this is a new BVPI											

Analysis

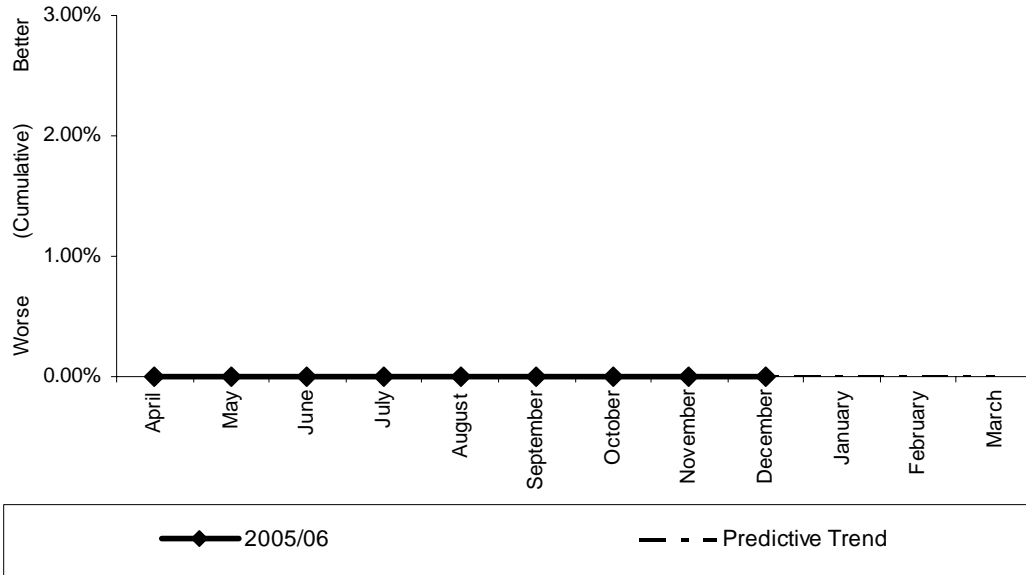
Yearly target	Will Authority achieve target? (Estimate using predictive trend)	Have current results improved since the same month last year?	Have current yearly results (including predictive trend) improved since last year?
No target set as no previous data	N/A	N/A	N/A

Commentary



16a(ii)

**The percentage of control and non-uniformed employees with a disability
(Reporting period April 05 - December 05)**



Monthly Stats (percentage)

	Apr	May	June	July	Aug	Sept	Oct	Nov	Dec	Jan	Feb	Mar
2005	0%	0%	0%	0%	0%	0%	0%	0%	0%			
2004	No previous data as this is a new BVPI											

Monthly Stats (people)

	Apr	May	June	July	Aug	Sept	Oct	Nov	Dec	Jan	Feb	Mar
2005	0	0	0	0	0	0	0	0	0			
2004	No previous data as this is a new BVPI											

Analysis

Yearly target	Will Authority achieve target? (Estimate using predictive trend)	Have current results improved since the same month last year?	Have current yearly results (including predictive trend) improved since last year?
No target set as no previous data	N/A	N/A	N/A

Commentary



16b

BVPI 16b concerns the percentage of the economically active population (aged 18-64) in the authority area who have a disability.

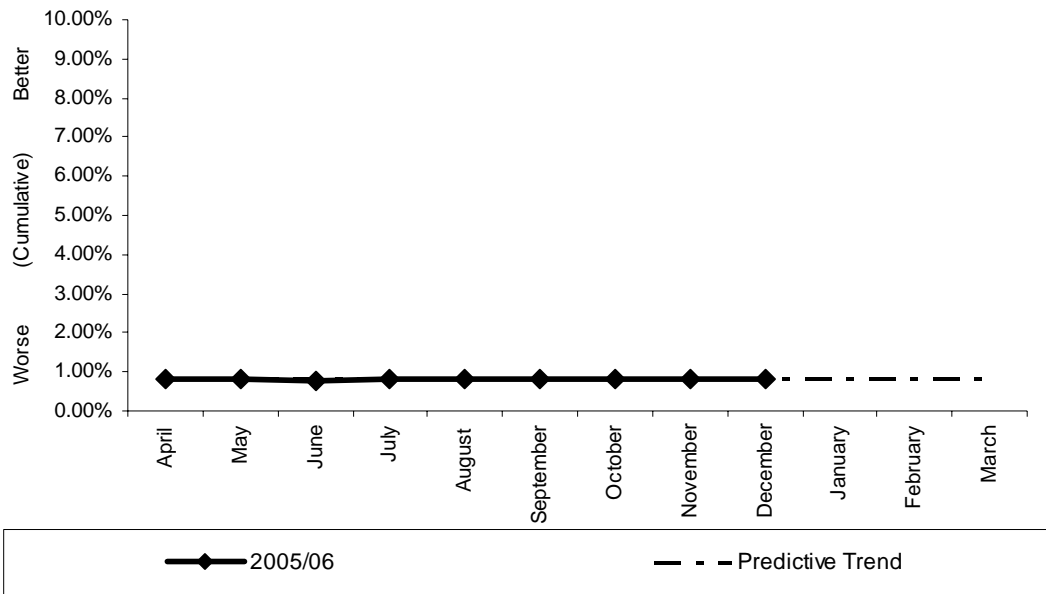
This percentage is 14.39%.

(38,050 people out of 264,510 that are economically active in the Authority area have a disability).

Source: 2001 Census, [Key Statistics for Local Authorities]. Crown copyright 2004. Crown copyright material is reproduced with the permission of the Controller of HMSO.



**The percentage of uniformed staff from ethnic minority communities
(Reporting period April 05 - December 05)**



Monthly Stats (percentage)

	Apr	May	June	July	Aug	Sept	Oct	Nov	Dec	Jan	Feb	Mar
2005	1.0%	1.0%	1.0%	0.8%	0.8%	0.8%	0.8%	0.8%	0.8%			
2004	No previous data as this is a new BVPI											

Monthly Stats (people)

	Apr	May	June	July	Aug	Sept	Oct	Nov	Dec	Jan	Feb	Mar
2005	5	5	5	4	4	4	4	4	4			
2004	No previous data as this is a new BVPI											

Analysis

Yearly target	Will Authority achieve target? (Estimate using predictive trend)	Have current results improved since the same month last year?	Have current yearly results (including predictive trend) improved since last year?
No target set as no previous data	N/A	N/A	N/A

Commentary

Target to be revisited for coming year.



17b

BVPI 17b concerns the percentage of economically active population (aged 18-54 representing uniformed staffing age) from ethnic minority communities in the fire and rescue service area.

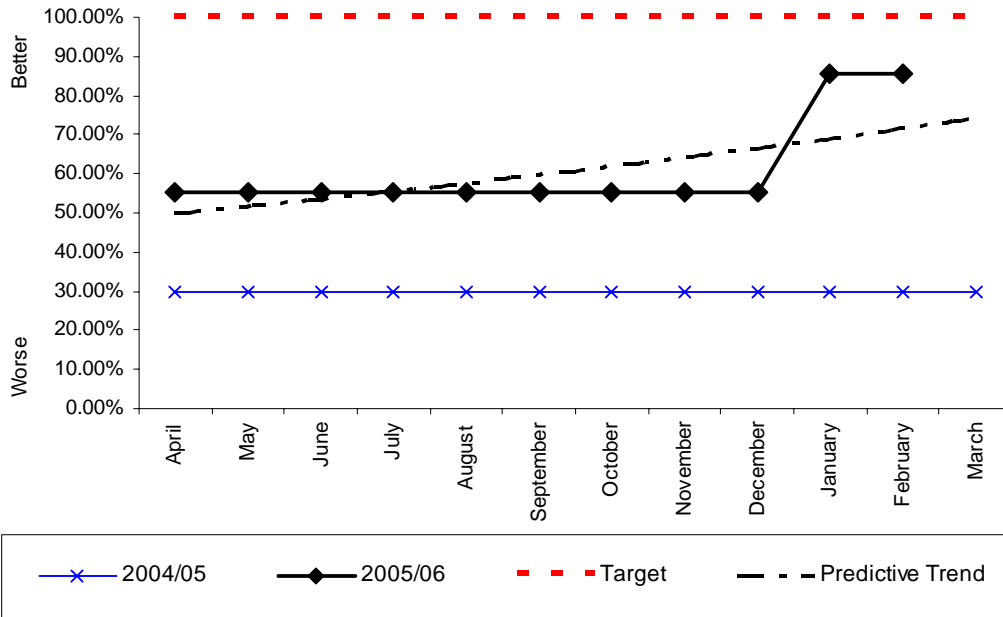
This percentage is 2.85%.

(6,209 people out of 217,905 economically active people in the Authority area are from ethnic minority communities.

Source: 2001 Census, [Key Statistics for Local Authorities]. Crown copyright 2004. Crown copyright material is reproduced with the permission of the Controller of HMSO.



**The number of types of interactions that are enabled for e-delivery as a percentage of the types of interactions that are legally permissible for e-delivery
(Reporting period Quarter 1 2004 - Quarter 3 2005 plus Jan-Feb)**



Monthly Stats (quarterly percentage)

	Apr	May	June	July	Aug	Sept	Oct	Nov	Dec	Jan	Feb	Mar	
2005	50.7%				55.07				55.07%			97.55%	
2004	30.0%				30.0%				30.0%			50.7%	

Monthly Stats (quarterly interactions/total)

	Apr	May	June	July	Aug	Sept	Oct	Nov	Dec	Jan	Feb	Mar	
2005	38/69				38/68				38/68			49.75/51	
2004	20.7/69				20.7/69				20.7/69			38/69	

Analysis

Yearly target	Will Authority achieve target? (Estimate using predictive trend)	Have current results improved since the same month last year?	Have current yearly results (including predictive trend) improved since last year?
100%	X	√	√

Commentary

The authority has undertaken an audit on this indicator. A duplicate interaction was deleted for Q2 and Q3, whilst a full audit in January shows 1 interaction becomes 2 parts, and therefore the number achievable being increased to 69. Out of these, the full audit has shown some unachievable interactions, and others completed whereas previously reported as incomplete. As the original list was drawn up against those deemed to be achievable, it is felt appropriate that we amend the list to reflect this. A document has been created for external audit purpose to identify this, and also to show evidence of the interactions achieved.

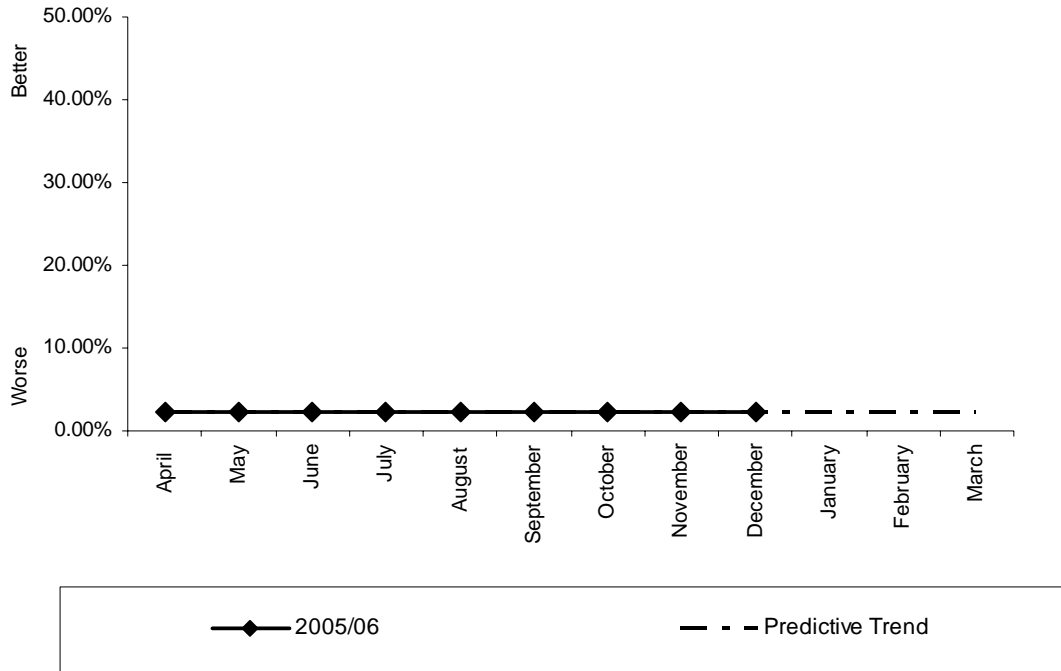


Our final outturn will be against 51 possible interactions, currently with 85% complete. Measures are in place to achieve the others by March 2006. This indicator will no longer be reported on as the National Portal will be the electronic transaction tool. As quoted in the Draft Fire and Rescue National Framework 2006/08 document:

“It is proposed that the expectations upon Fire and Rescue Authorities within financial year 2005/06 should be limited to ensuring that they are able to receive and act appropriately on records received via the national fire portal.”



**The percentage of women firefighters
(Reporting period April 05 - December 05)**



Monthly Stats (percentage)

	Apr	May	June	July	Aug	Sept	Oct	Nov	Dec	Jan	Feb	Mar
2005	2.27%	2.27%	2.25%	2.27%	2.27%	2.27%	2.27%	2.27%	2.27%			
2004	No previous data as this is a new BVPI											

Monthly Stats (people)

	Apr	May	June	July	Aug	Sept	Oct	Nov	Dec	Jan	Feb	Mar
2005	9	9	9	9	9	9	9	9	9			
2004	No previous data as this is a new BVPI											

Analysis

Yearly target	Will Authority achieve target? (Estimate using predictive trend)	Have current results improved since the same month last year?	Have current yearly results (including predictive trend) improved since last year?
No target set as no previous data	N/A	N/A	N/A

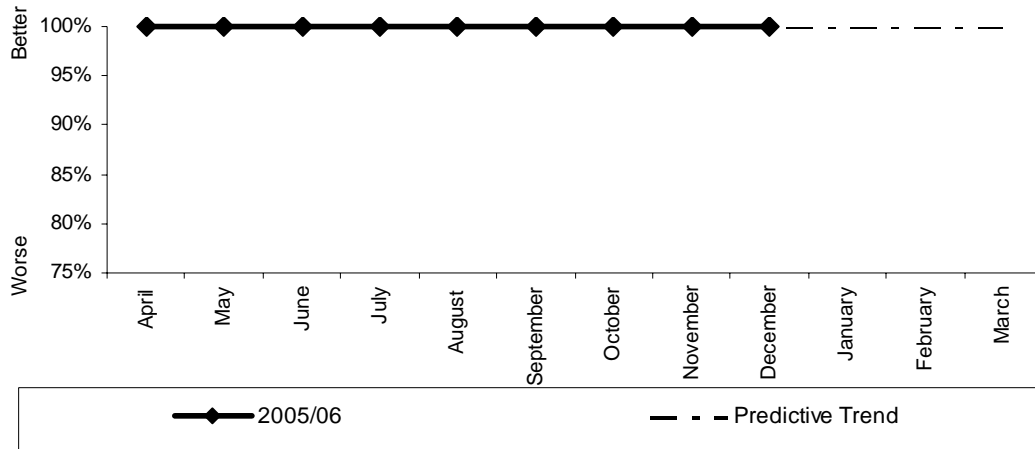
Commentary



BVPIs no longer requested by the ODPM (July 2005)

145(i)

**The percentage of incidents at which the number of appliances met the standards of fire cover
(Reporting period April 05 - December 05)**



Monthly Stats (percentage)

	Apr	May	June	July	Aug	Sept	Oct	Nov	Dec	Jan	Feb	Mar
2005	100%	100%	100%	100%	100%	100%	100%	100%	100%			
2004	100%	100%	100%	100%	100%	100%	100%	100%	100%	100%	100%	100%

Monthly Stats (actual incidents)

	Apr	May	June	July	Aug	Sept	Oct	Nov	Dec	Jan	Feb	Mar	YTD	%
2005	173	175	207	229	196	221	202	205	184				1792	100
2004	150	179	179	221	242	234	215	194	161	175	172	174	2296	100

Analysis

Yearly target	Will Authority achieve target? (Estimate using predictive trend)	Have current results improved since the same month last year?	Have current yearly results (including predictive trend) improved since last year?
No target set as BVPI deleted	N/A	N/A	N/A

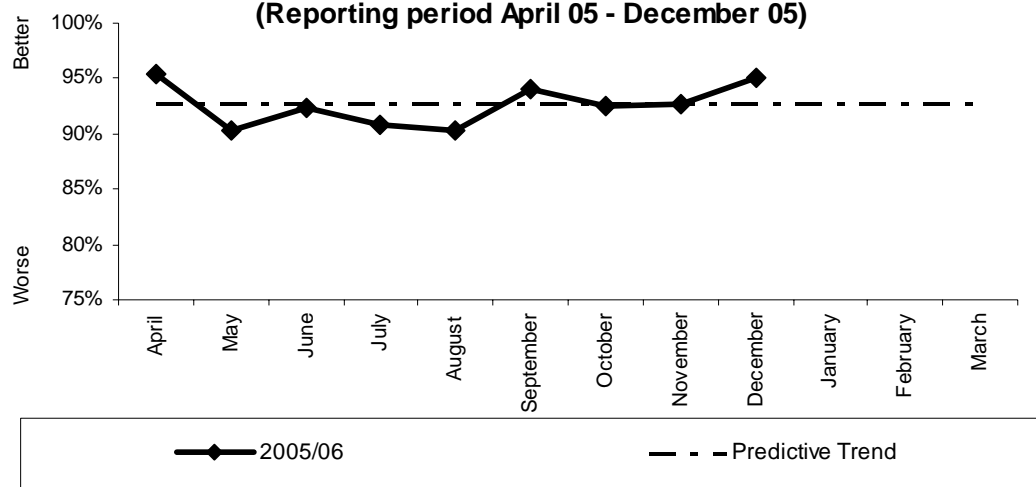
Commentary

Local standards of fire cover are to be adopted within the coming reporting year.



145(ii)

**The percentage of incidents at which the number of riders met the standards of fire cover
(Reporting period April 05 - December 05)**



Monthly Stats (percentage)

	Apr	May	June	July	Aug	Sept	Oct	Nov	Dec	Jan	Feb	Mar
2005	95.38%	90.29%	92.27%	90.83%	90.31%	94.12%	92.57%	92.68%	95.11%			
2004	90.6%	91.6%	89.9%	89.1%	92.6%	93.2%	93.1%	97.4%	92.5%	94.3%	92.4%	95.4%

Monthly Stats (actual incidents)

	Apr	May	June	July	Aug	Sept	Oct	Nov	Dec	Jan	Feb	Mar
2005	165/173	158/175	191/201	208/229	177/196	208/221	187/202	190/205	175/184			
2004	136/150	164/179	161/179	196/221	224/242	218/234	201/215	188/194	149/161	165/175	159/172	166/174

	YTD	%
2005	1671/1792	93.3
2004	2127/2296	92.6

Analysis

Yearly target	Will Authority achieve target? (Estimate using predictive trend)	Have current results improved since the same month last year?	Have current yearly results (including predictive trend) improved since last year?
No target set as BVPI deleted	N/A	N/A	N/A

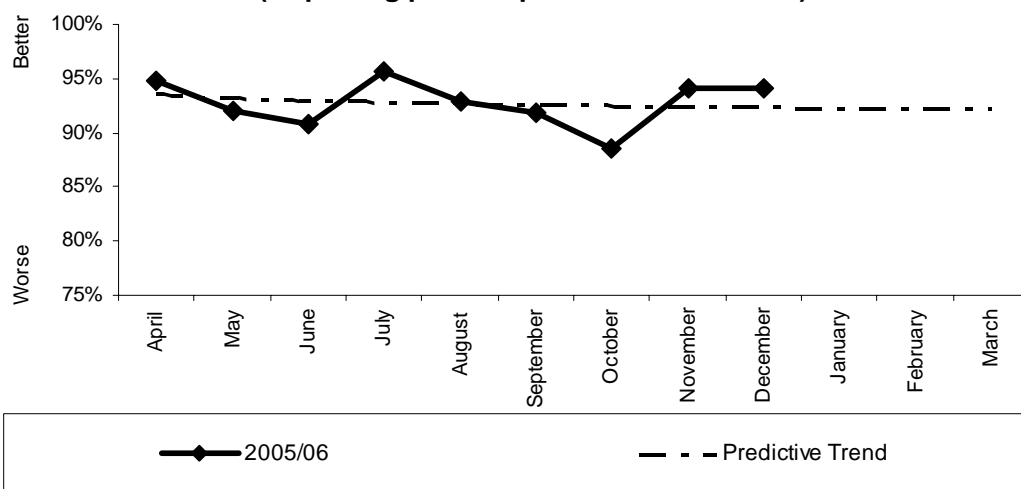
Commentary

Local standards of fire cover are to be adopted within the coming reporting year.



145(iii)

**The percentage of incidents at which the attendance times met the standards of fire cover
(Reporting period April 05 - December 05)**



Monthly Stats (percentage)

	Apr	May	June	July	Aug	Sept	Oct	Nov	Dec	Jan	Feb	Mar
2005	94.80%	92.00%	90.82%	95.63%	92.86%	91.86%	88.61%	94.15%	94.02%			
2004	96.0%	93.8%	96.5%	95.0%	94.6%	94.0%	91.2%	92.2%	91.3%	93.1%	94.8%	92.0%

Monthly Stats (actual incidents)

	Apr	May	June	July	Aug	Sept	Oct	Nov	Dec	Jan	Feb	Mar
2005	164/173	161/175	188/207	219/229	182/196	203/221	179/202	193/205	173/184			
2004	143/150	168/179	173/179	210/221	229/242	220/234	197/215	178/194	147/161	163/175	163/172	160/174

	YTD	%
2005	1662/1792	92.4
2004	2161/2296	94.1

Analysis

Yearly target	Will Authority achieve target? (Estimate using predictive trend)	Have current results improved since the same month last year?	Have current yearly results (including predictive trend) improved since last year?
No target set as BVPI deleted	N/A	N/A	N/A

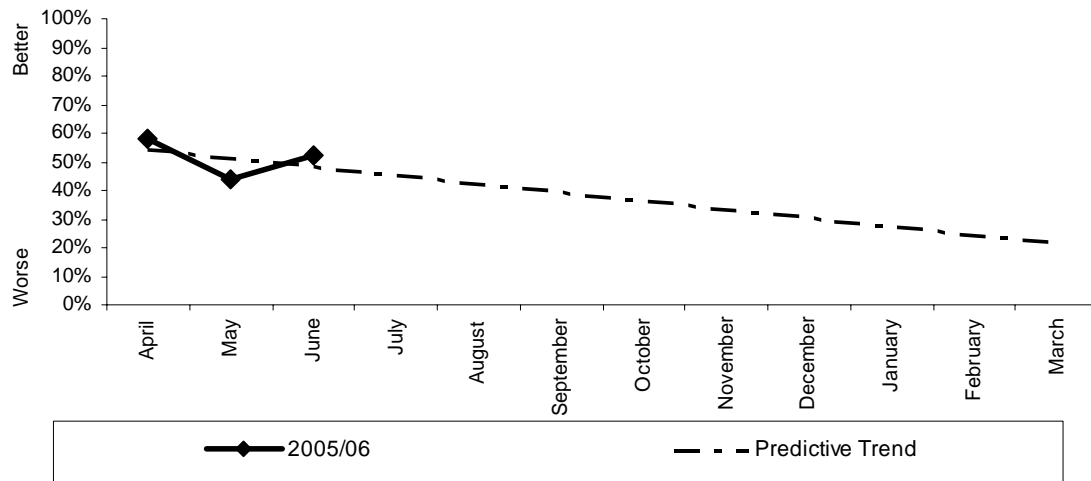
Commentary

Local standards of fire cover are to be adopted within the coming reporting year.



OPS 3

**Wholetime availability on the station
 (Reporting period April 05 - June 05)**



Monthly Stats (percentage)

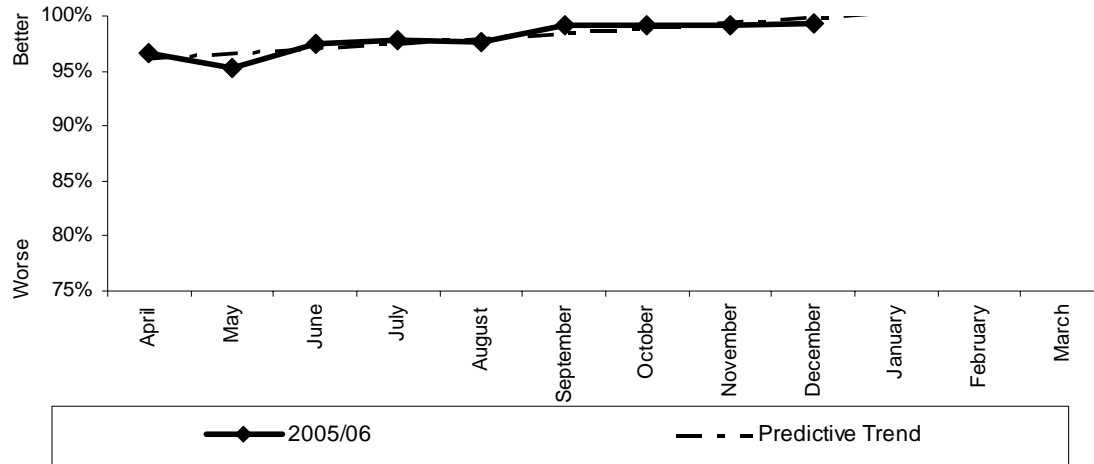
	Apr	May	June	July	Aug	Sept	Oct	Nov	Dec	Jan	Feb	Mar
2005	58.0%	44.0%	52.0%									
2004	-	-	-	-	-	-	-	-	-	-	-	-

Commentary



OPS 3 (FAP17)

**The percentage of shifts wholetime appliances crewed
(Reporting period April 05 - December 05)**



Monthly Stats (percentage)

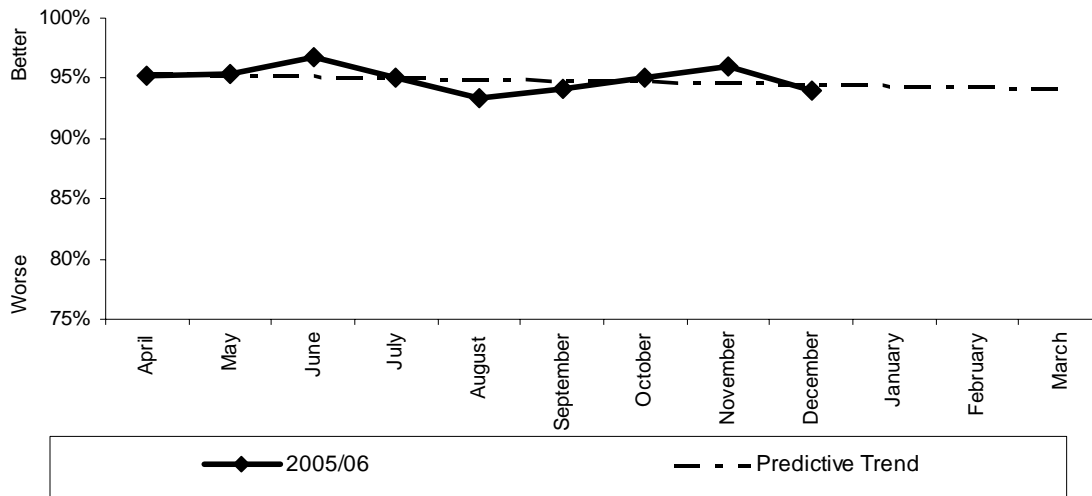
	Apr	May	June	July	Aug	Sept	Oct	Nov	Dec	Jan	Feb	Mar
2005	96.7%	95.2%	97.5%	97.8%	97.6%	99.2%	99.1%	99.2%	99.3%			
2004	-	-	-	-	-	-	-	-	-	-	-	-

Commentary



OPS 3 (FAPI 8)

**The percentage of shifts retained appliances crewed
(Reporting period April 05 - December 05)**



Monthly Stats (percentage)

	Apr	May	June	July	Aug	Sept	Oct	Nov	Dec	Jan	Feb	Mar
2005	95.2%	95.3%	96.7%	95.0%	93.3%	94.1%	95.0%	96.0%	94.0%			
2004	-	-	-	-	-	-	-	-	-	-	-	-

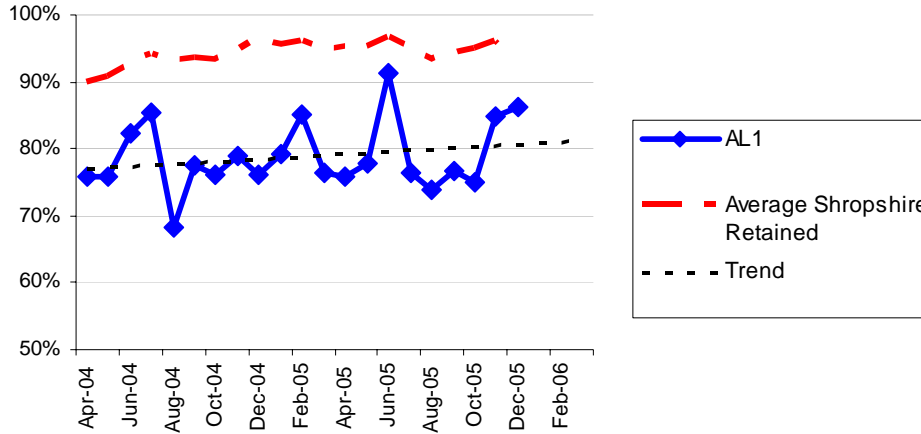
Commentary



OPS3 Appliance Availability / Crewing

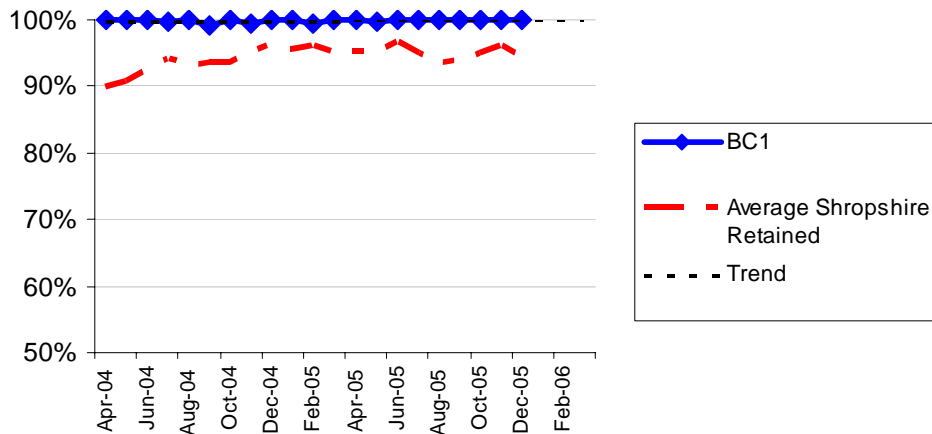
RETAINED

% Shifts Retained Appliances Crewed - Albrighton



%	Apr	May	June	July	Aug	Sept	Oct	Nov	Dec	Jan	Feb	Mar	Yearly %
2005	75.8	77.8	91.4	76.3	73.8	76.7	75.1	84.8	86.2				79.8
2004	75.9	75.9	82.2	85.4	68.3	77.5	76.2	78.9	76.1	79.1	85.2	76.3	78.1

% Shifts Retained Appliances Crewed - Bishops Castle

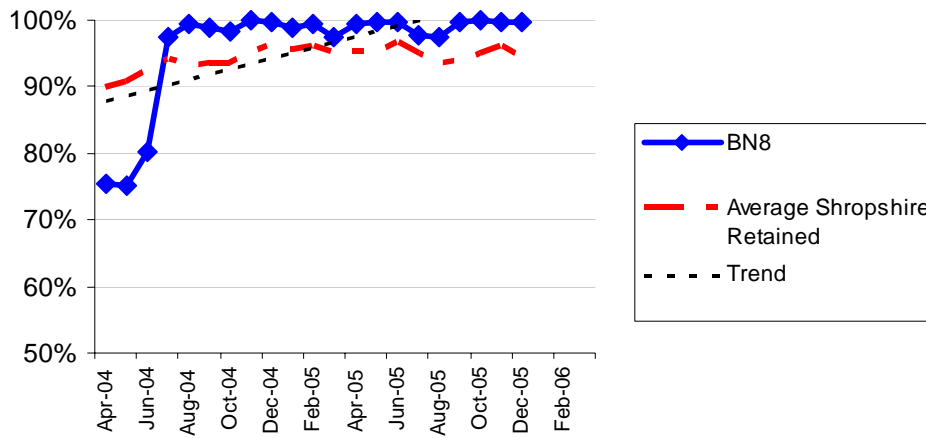


%	Apr	May	June	July	Aug	Sept	Oct	Nov	Dec	Jan	Feb	Mar	Yearly %
2005	100	99.8	100	100	100	100	100	100	100				100
2004	100	99.9	100	99.8	100	99.2	100	99.4	100	100	99.5	99.9	99.8



OPS3 Appliance Availability / Crewing

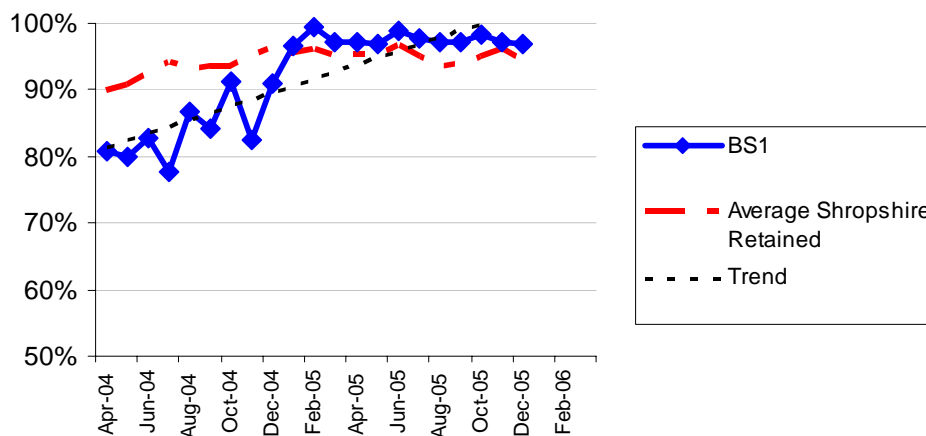
% Shifts Retained Appliances Crewed - Bridgnorth



%	Apr	May	June	July	Aug	Sept	Oct	Nov	Dec	Jan	Feb	Mar	Yearly %
2005	99.4	99.9	99.7	97.8	97.4	99.6	99.9	99.7	99.6				97.5
2004	75.4	75.1	80.2	97.4	99.4	98.9	98.3	100	99.7	99.0	99.6	97.6	84.8

* April, May and June averages 2 appliances

% Shifts Retained Appliances Crewed - Baschurch

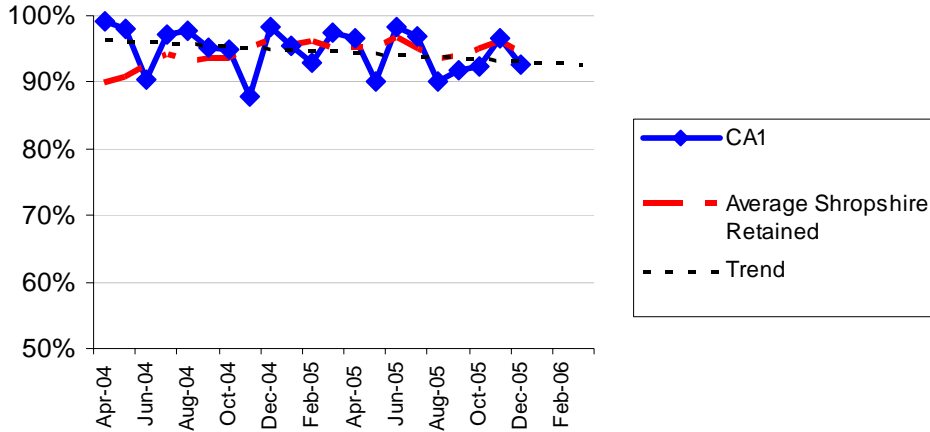


%	Apr	May	June	July	Aug	Sept	Oct	Nov	Dec	Jan	Feb	Mar	Yearly %
2005	97.2	96.8	98.9	97.8	97.2	97.1	98.4	97.2	97.0				97.5
2004	80.9	80.0	82.7	77.6	86.9	84.1	91.3	82.4	91.1	96.7	99.5	97.1	87.5



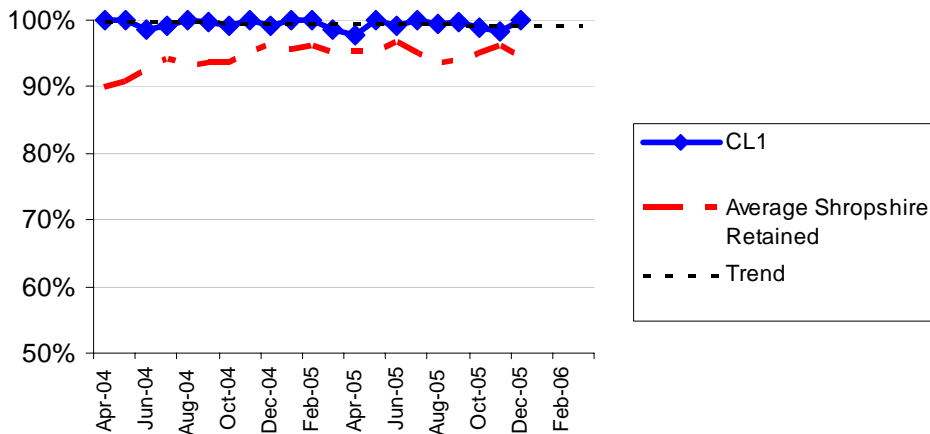
OPS3 Appliance Availability / Crewing

% Shifts Retained Appliances Crewed - Craven Arms



%	Apr	May	June	July	Aug	Sept	Oct	Nov	Dec	Jan	Feb	Mar	Yearly %
2005	96.6	90.2	98.4	96.9	90.0	91.7	92.3	96.5	92.6				93.9
2004	99.0	80.0	90.3	97.1	97.6	95.2	95.0	87.8	98.4	95.4	92.8	97.4	95.3

% Shifts Retained Appliances Crewed - Clun

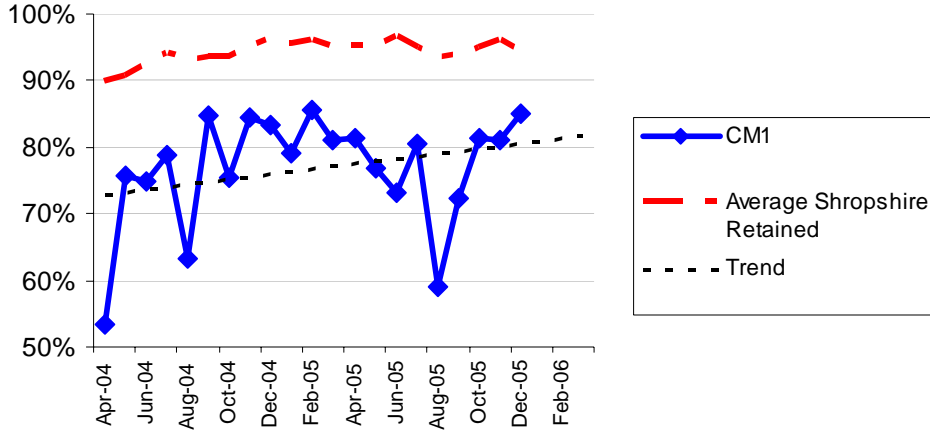


%	Apr	May	June	July	Aug	Sept	Oct	Nov	Dec	Jan	Feb	Mar	Yearly %
2005	97.7	100	99.1	100	99.5	99.6	98.8	98.4	100				99.2
2004	100	100	98.7	99.0	100	99.8	99.1	100	99.3	100	100	98.5	99.5



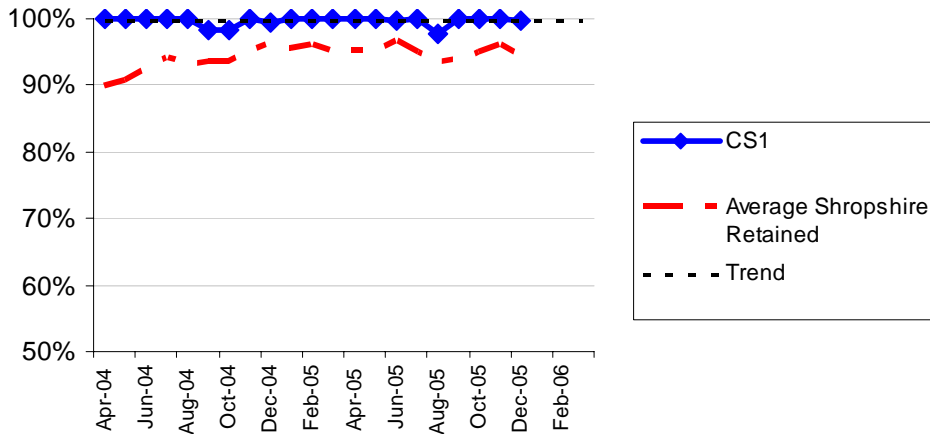
OPS3 Appliance Availability / Crewing

% Shifts Retained Appliances Crewed - Cleobury Mortimer



%	Apr	May	June	July	Aug	Sept	Oct	Nov	Dec	Jan	Feb	Mar	Yearly %
2005	81.5	76.8	73.2	80.4	58.9	72.2	81.5	81.2	85.0				76.7
2004	53.4	75.7	74.9	78.7	63.3	84.7	75.3	84.4	83.2	79.2	85.6	81.2	76.6

% Shifts Retained Appliances Crewed - Church Stretton

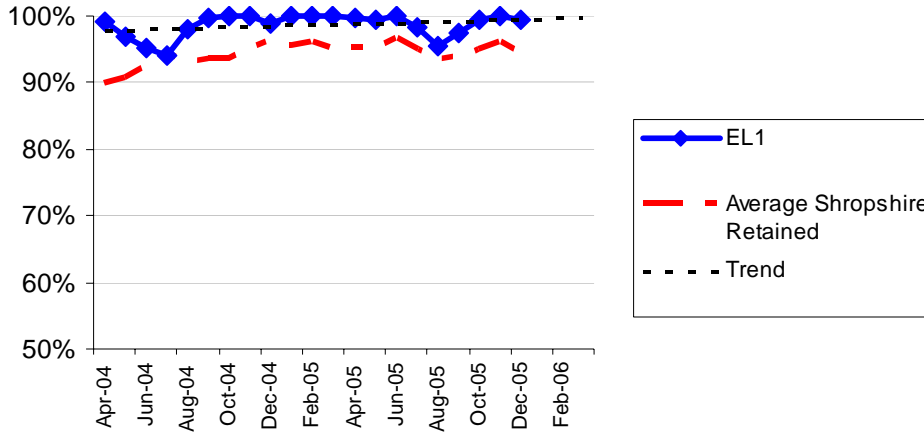


%	Apr	May	June	July	Aug	Sept	Oct	Nov	Dec	Jan	Feb	Mar	Yearly %
2005	100	100	99.7	100	97.6	100	100	100	99.7				99.5
2004	100	100	100	100	100	98.3	98.4	100	99.5	100	100	100	99.7



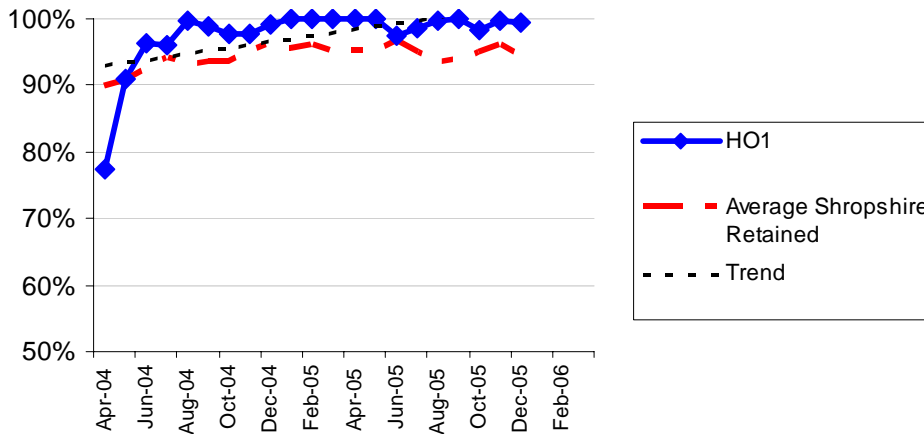
OPS3 Appliance Availability / Crewing

% Shifts Retained Appliances Crewed - Ellesmere



%	Apr	May	June	July	Aug	Sept	Oct	Nov	Dec	Jan	Feb	Mar	Yearly %
2005	99.7	99.5	100	98.2	95.6	97.6	99.5	100	99.3				98.4
2004	99.2	97.0	95.1	94.0	98.0	99.7	99.9	100	99.0	100	100	100	96.2

% Shifts Retained Appliances Crewed - Hodnet

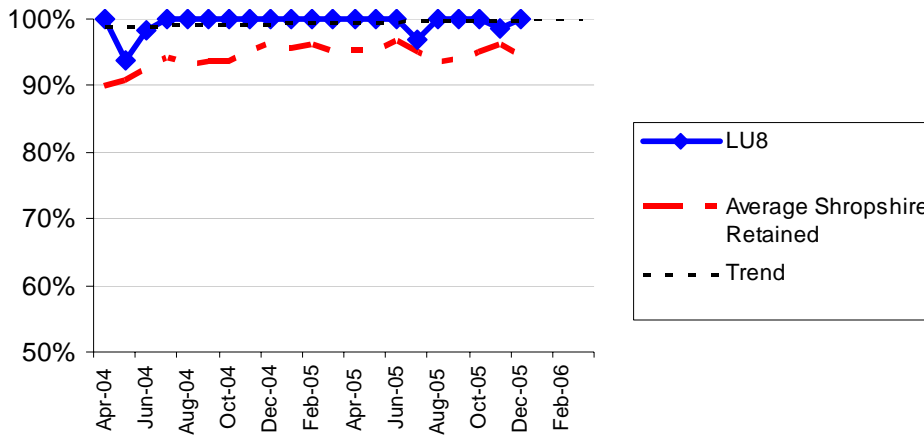


%	Apr	May	June	July	Aug	Sept	Oct	Nov	Dec	Jan	Feb	Mar	Yearly %
2005	100	100	97.4	98.4	99.7	100	98.3	99.6	99.4				99.2
2004	77.3	91.0	96.4	96.2	99.7	98.9	97.7	97.7	99.1	100	100	100	98.5



OPS3 Appliance Availability / Crewing

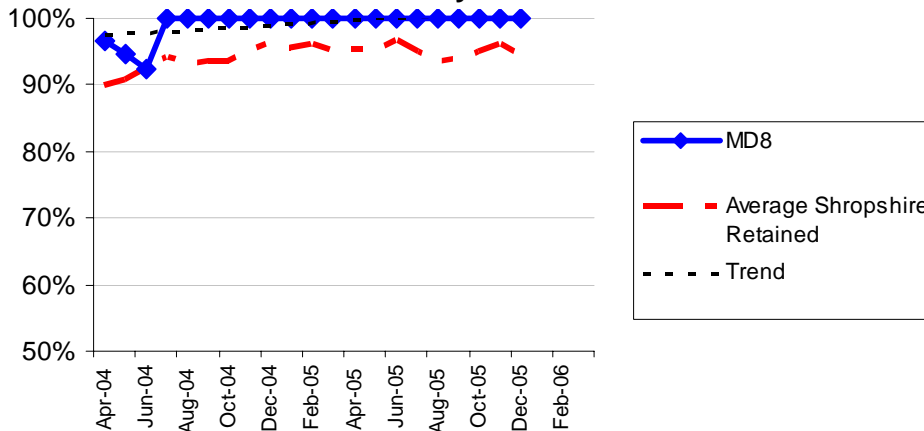
% Shifts Retained Appliances Crewed - Ludlow



%	Apr	May	June	July	Aug	Sept	Oct	Nov	Dec	Jan	Feb	Mar	Yearly %
2005	100	100	100	96.9	100	100	100	98.6	100				99.5
2004	100	93.9	98.2 [†]	100	100	100	100	100	100	100	100	100	99.4

[†] April, May and June averages 2 appliances

% Shifts Retained Appliances Crewed - Market Drayton



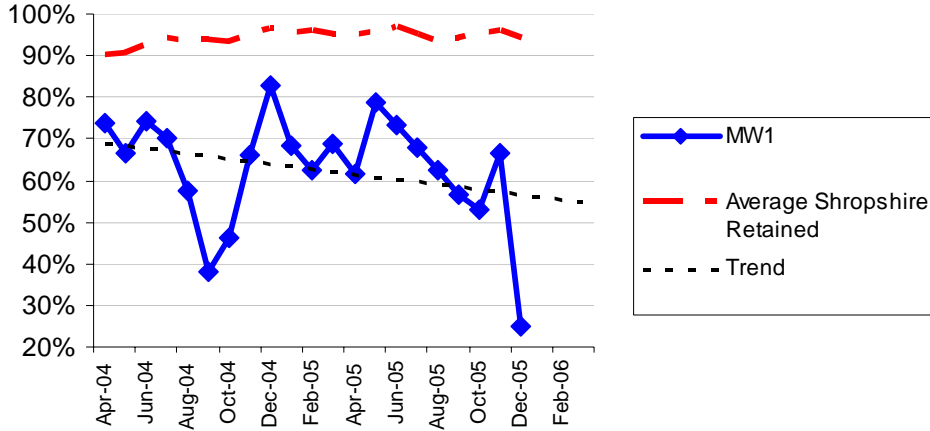
%	Apr	May	June	July	Aug	Sept	Oct	Nov	Dec	Jan	Feb	Mar	Yearly %
2005	100	100	100	100	100	100	100	100	100				100
2004	96.7	94.6	92.5 [‡]	100	100	100	100	100	100	100	100	100	98.7

[‡] April, May and June averages 2 appliances



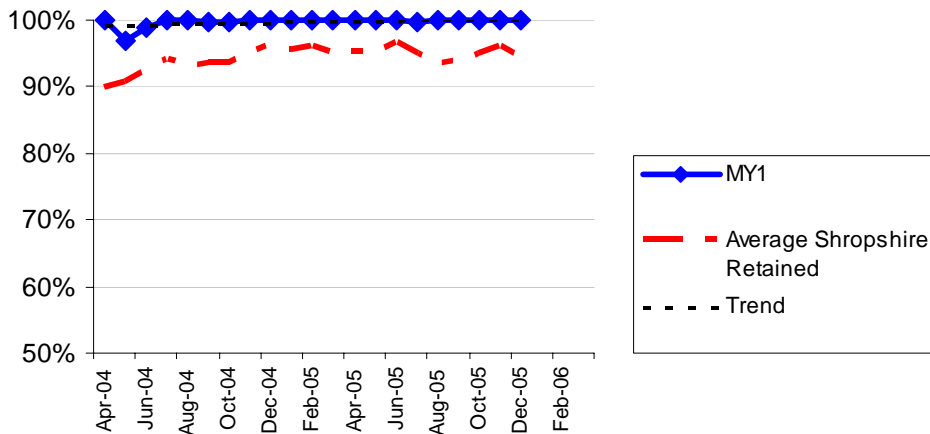
OPS3 Appliance Availability / Crewing

% Shifts Retained Appliances Crewed - Much Wenlock



%	Apr	May	June	July	Aug	Sept	Oct	Nov	Dec	Jan	Feb	Mar	Yearly %
2005	61.4	78.7	73.5	67.9	62.3	56.8	52.8	66.6	25.1				60.6
2004	74.0	66.7	74.2	70.0	57.5	38.2	46.3	66.3	82.9	68.5	62.5	68.8	64.7

% Shifts Retained Appliances Crewed - Minsterley

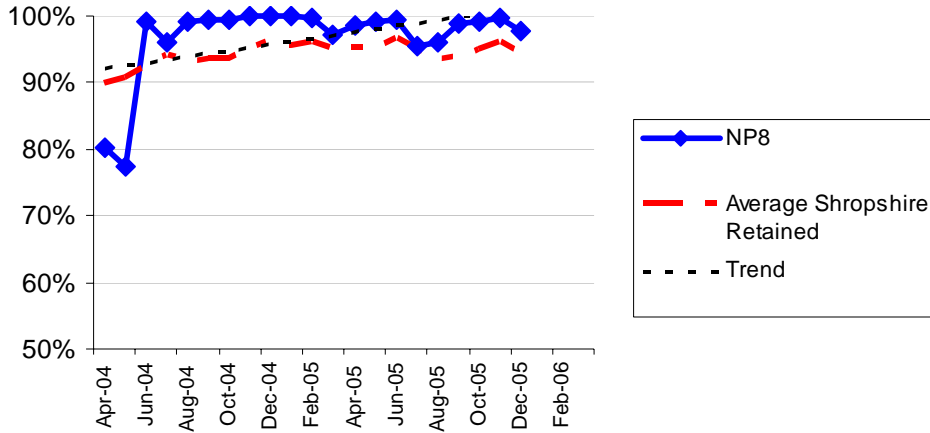


%	Apr	May	June	July	Aug	Sept	Oct	Nov	Dec	Jan	Feb	Mar	Yearly %
2005	100	100	100	99.7	100	100	100	100	100				100
2004	100	96.9	98.9	100	100	99.7	99.8	100	100	100	100	100	99.6



OPS3 Appliance Availability / Crewing

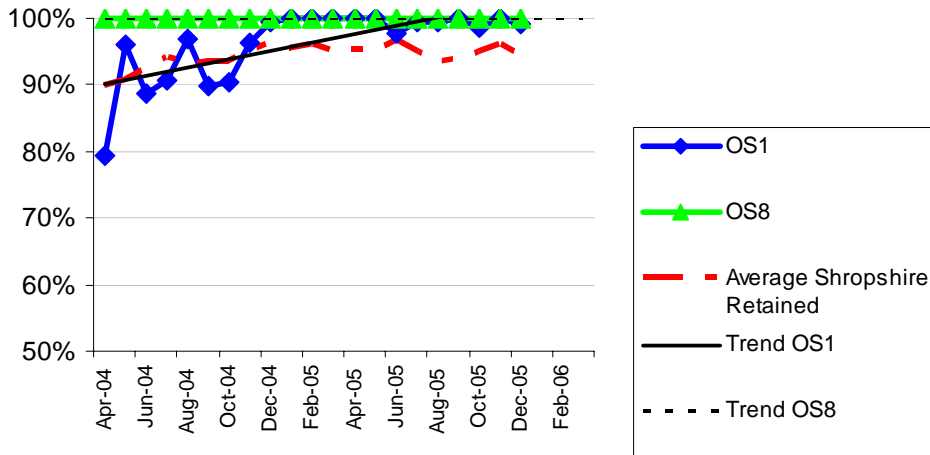
% Shifts Retained Appliances Crewed - Newport



%	Apr	May	June	July	Aug	Sept	Oct	Nov	Dec	Jan	Feb	Mar	Yearly %
2005	98.5	99.1	99.4	95.5	96.0	98.8	99.1	99.7	97.8				98.2
2004	80.3	77.3 ^s	99.2	96.1	99.1	99.3	99.4	100	100	100	99.8	97.3	95.7

^s April and May averages appliances

% Shifts Retained Appliances Crewed - Oswestry

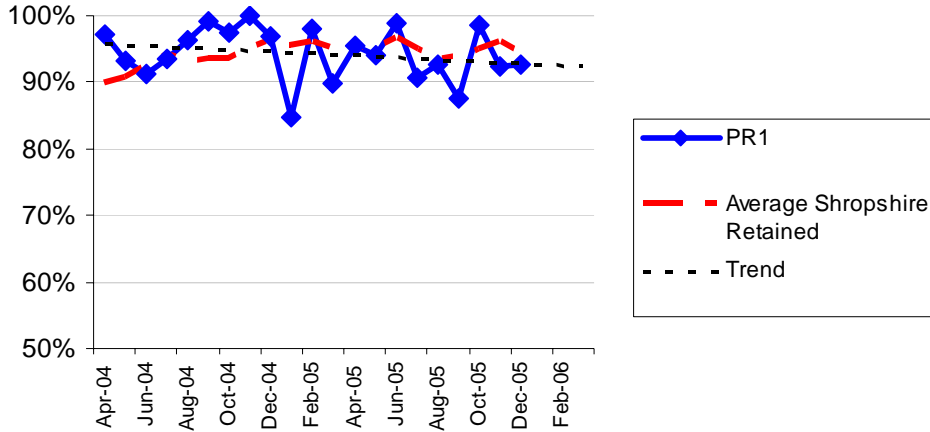


%	Apr	May	June	July	Aug	Sept	Oct	Nov	Dec	Jan	Feb	Mar	Yearly %
2005	OS1	100	100	97.6	99.6	99.3	100	98.5	100	99.1			99.3
	OS8	100	100	100	100	100	100	100	100	100			100
2004	OS1	79.4	95.9	88.7	90.5	96.8	89.7	90.4	96.4	99.4	100	100	93.9
	OS8	100	100	100	100	100	100	100	100	100	100	100	100



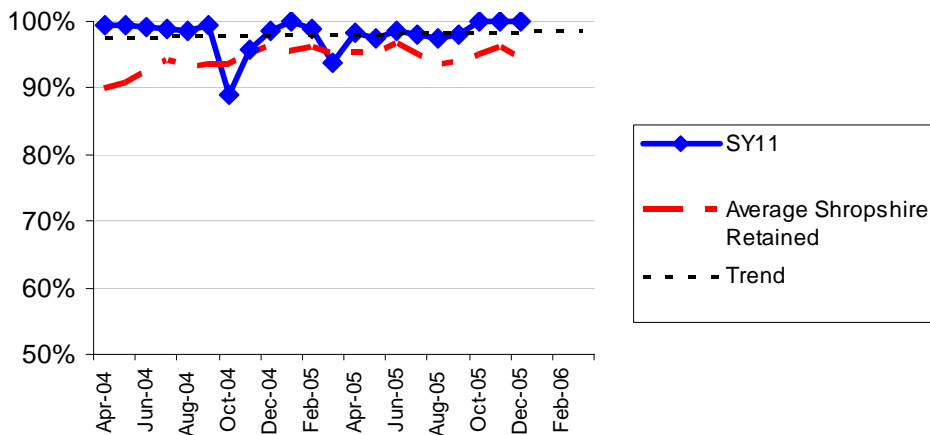
OPS3 Appliance Availability / Crewing

% Shifts Retained Appliances Crewed - Prees



%	Apr	May	June	July	Aug	Sept	Oct	Nov	Dec	Jan	Feb	Mar	Yearly %
2005	95.5	94.1	98.9	90.7	92.7	87.7	98.5	92.4	92.8				93.7
2004	97.3	93.3	91.2	93.5	96.2	99.1	97.5	100	96.8	84.8	97.9	89.7	94.8

% Shifts Retained Appliances Crewed - Shrewsbury Retained

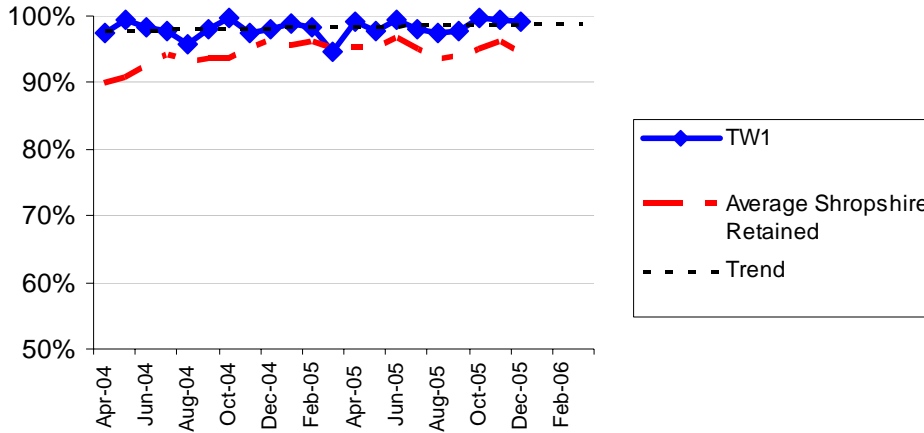


%	Apr	May	June	July	Aug	Sept	Oct	Nov	Dec	Jan	Feb	Mar	Yearly %
2005	98.2	97.5	98.5	98.1	97.6	98.1	100	100	100				98.7
2004	99.4	99.5	99.1	98.9	98.6	99.5	88.9	95.8	98.6	100	98.9	93.8	97.6



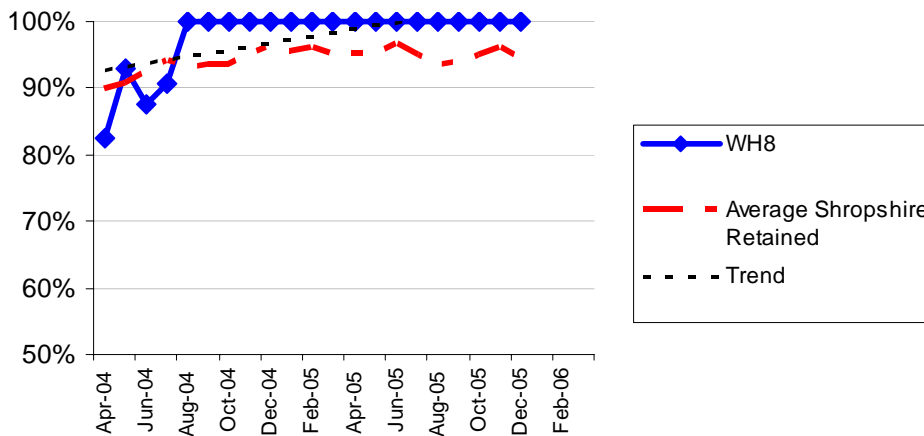
OPS3 Appliance Availability / Crewing

% Shifts Retained Appliances Crewed - Tweeddale



%	Apr	May	June	July	Aug	Sept	Oct	Nov	Dec	Jan	Feb	Mar	Yearly %
2005	99.0	97.7	99.5	98.1	97.4	97.6	99.6	99.4	99.1				98.6
2004	97.4	99.4	98.4	97.8	95.8	98.1	99.7	97.4	97.9	98.9	98.4	94.6	97.8

% Shifts Retained Appliances Crewed - Whitchurch



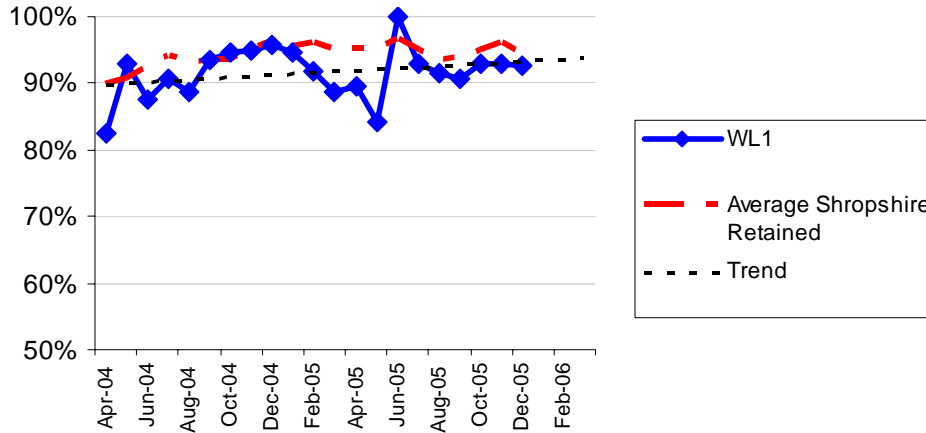
%	Apr	May	June	July	Aug	Sept	Oct	Nov	Dec	Jan	Feb	Mar	Yearly %
2005	100	100	100	100	100	100	100	100	100				100
2004	98.8	97.9	98.9**	100	100	100	100	100	100	100	100	100	99.6

** April, May and June averages 2 appliances



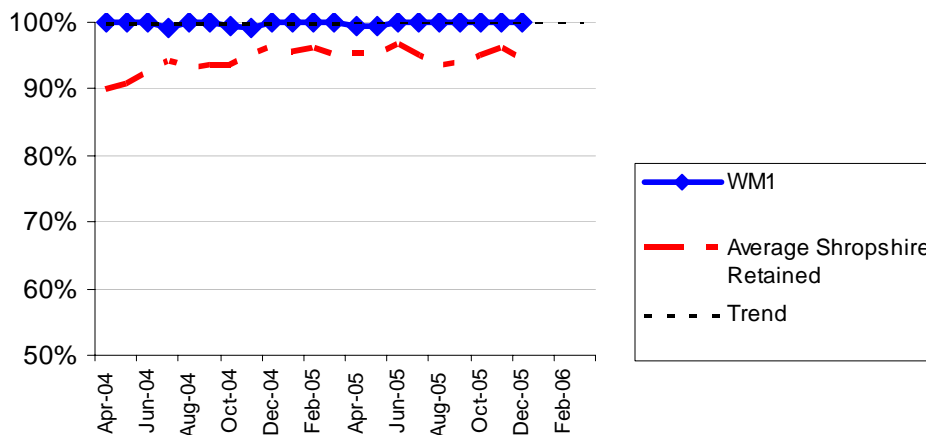
OPS3 Appliance Availability / Crewing

% Shifts Retained Appliances Crewed - Wellington



%	Apr	May	June	July	Aug	Sept	Oct	Nov	Dec	Jan	Feb	Mar	Yearly %
2005	89.5	84.1	100	92.9	91.5	90.7	92.9	93.1	92.7				91.9
2004	82.5	93.0	87.6	90.6	88.6	93.6	94.6	94.8	95.6	94.7	91.9	88.7	91.4

% Shifts Retained Appliances Crewed - Wem

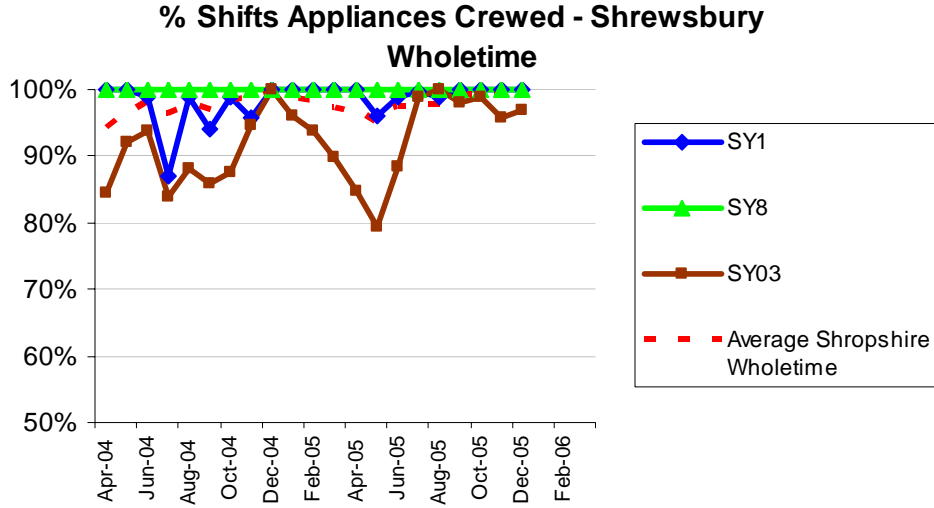


%	Apr	May	June	July	Aug	Sept	Oct	Nov	Dec	Jan	Feb	Mar	Yearly %
2005	99.5	99.4	100	100	100	100	100	100	100				99.9
2004	100	100	100	99.1	100	100	99.6	99.3	100	100	100	100	93.8



OPS3 Appliance Availability / Crewing

WHOLETIME

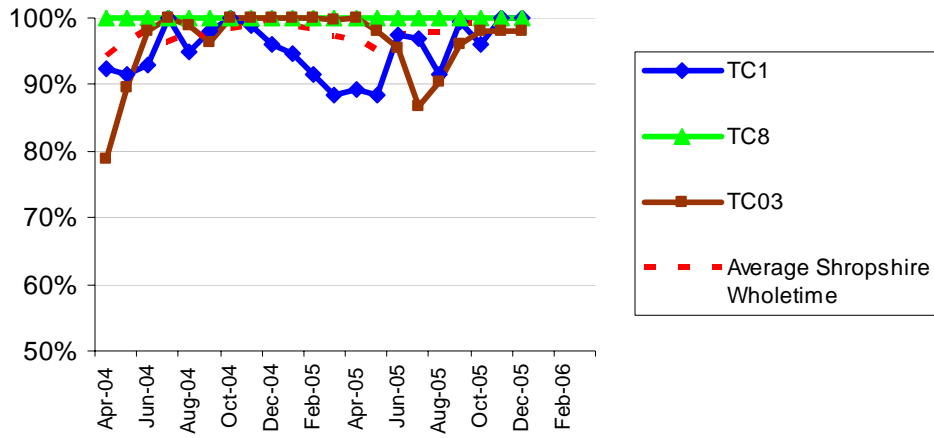


%		Apr	May	June	July	Aug	Sept	Oct	Nov	Dec	Jan	Feb	Mar	Yearly %
2005	SY1	100	96.1	98.8	99.8	98.8	100	100	100	100				99.4
	SY8	100	100	100	100	100	100	100	100	100				100
	SY03	84.8	79.3	88.3	98.8	100	97.9	98.8	95.8	96.8				95.9
2004	SY1	100	100	98.8	86.9	99.0	94.2	98.8	95.8	100	100	100	100	97.8
	SY8	100	100	100	100	100	100	100	100	100	100	100	100	100
	SY03	84.6	92.0	93.7	83.9	88.2	85.8	87.5	94.6	100	96.0	93.8	89.9	90.8



OPS3 Appliance Availability / Crewing

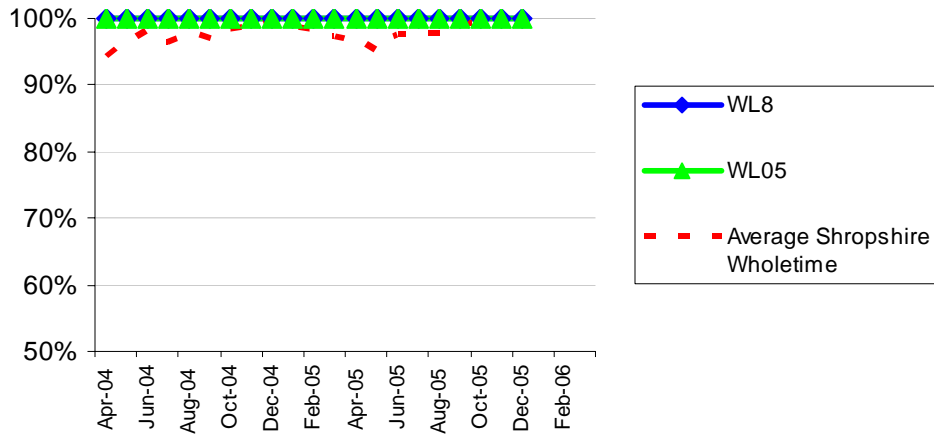
% Shifts Appliances Crewed - Telford Central



%		Apr	May	June	July	Aug	Sept	Oct	Nov	Dec	Jan	Feb	Mar	Yearly %
2005	TC1	89.2	88.3	97.5	96.8	91.5	99.4	96.0	100	100				97.0
	TC8	100	100	100	100	100	100	100	100	100				100
	TC03	100	98.0	95.4	86.7	90.3	96.0	98.0	97.9	98.0				94.9
2004	TC1	92.3	91.5	92.9	100	95.0	97.9	100	98.8	96.0	94.8	91.5	88.3	94.9
	TC8	100	100	100	100	100	100	100	100	100	100	100	100	100
	TC03	78.8	89.5	97.9	100	98.8	96.4	100	100	100	100	100	99.6	96.7



% Shifts Appliances Crewed - Wellington Wholetime



%		Apr	May	June	July	Aug	Sept	Oct	Nov	Dec	Jan	Feb	Mar	Yearly %
2005	WL8	100	100	100	100	100	100	100	100	100				100
	WL05	100	100	100	100	100	100	100	100	100				100
2004	WL8	100	100	100	100	100	100	100	100	100	100	100	100	100
	WL05	100	100	100	100	100	100	100	100	100	100	100	100	100



2005-06 Estimated Outturn (not actual and unverified)

Indicator suite	Best Value Indicator Number	Description	2005/06 - Estimated Outturn	BEST VALUE TARGET	SUCCESS OR FAILURE LIKELY	COMMENT / REPORTING PERIOD
Service Delivery	142(ii)	Primary Fires per 10,000 population	25.64	26.4	✓	Target equates to 1185 fires.1055 fires April-February (monthly average 96). Under 130 in March (and audit adjustment) to achieve target.
	142(iii)	Accidental fires in dwellings per 10,000 dwellings	13.56	13	POSSIBLE	Target equates to 243. 211 April-January (monthly average 21). Less than 32 in February and March (and audit adjustment) to achieve target.
	143(i)	Number of fire deaths per 100,000 population	0.45	0	✗	There are currently 2 fire deaths, which is hoped to be the outturn
	143(ii)	Number of injuries (ex. Precautionary checks) arising from accidental fires per 100,000 population	3.79	3.3	✗	17 injuries April to January, target equates to 15. Monthly average 1.7. Target can only be achieved if investigation or verification alters those currently reported injured in an accidental dwelling fire.
	144	Accidental fires confined to room of origin	90.05%	90.0%	✓	211 fires, 190 confined April to January
	145i	Percentage of incidents at which the number of appliances met the national standards of fire cover	100%	n/a	n/a	Local standards to be adopted
	145ii	Percentage of incidents at which the number of riders met the national standards of fire cover	94.6%	n/a	n/a	



145iii	Percentage of incident at which the attendance times met the standards of fire cover	92.9%	n/a	n/a	
146i	Number of malicious false alarms NOT attended per 1,000 population	0.68	New indicator definition	n/a	April to February 0.62, equating to an actual number of 278
146ii	Number of malicious false attended alarms per 1,000 population	0.41	New indicator definition	n/a	April to February 0.37, equating to an actual number of 165
149i	False alarms caused by automatic fire detection apparatus per 1,000 non-domestic properties	77.6	82	✓	Target equates to 1243 AFAs.1078 AFAs April-February (monthly average 98). Under 165 in March (and audit adjustment) to achieve target.
149ii	Number of those properties with more than 1 attendance per 1,000 non-domestic properties	188	New indicator	n/a	
149iii	The percentage of calls which are to a property with more than one attendance	15.7%	New indicator	n/a	
206i	Number of deliberate primary fires (excluding deliberate primary fires in vehicles) per 10,000 population	5.62	New indicator	n/a	This would be an actual of 252, April to January = 210
206ii	Number of deliberate primary fires in vehicle per 10,000 population	5.00	New indicator	n/a	This would be an actual of 225, April to January = 187
206iii	Number of deliberate secondary fires (excluding deliberate secondary fires in vehicles) per 10,000 population	3.77	New indicator	n/a	This would be an actual of 169, April to February = 150
206iv	Number of deliberate secondary fires in vehicle per 10,000 population	0.19	New indicator	n/a	This would be an actual of 9, April to February = 7
207	Number of fires in non-domestic premises per 1,000 non-domestic premises	17.82	New indicator	n/a	This would be an actual of 270, April to January = 225
208	The percentage of people in accidental dwelling fires who escaped unharmed without FRA assistance at the fire	96.06%	New indicator	n/a	This would be an actual achievement of 317 people escaping unharmed out of 330 without FRA assistance, April to January 264/275



	209i	The percentage of dwelling fires attended where a smoke alarm had activated	35.36%	New indicator	n/a	This would be 111 out of 314 dwelling fires, April to January = 93/262
	209ii	The percentage of dwelling fires attended where a smoke alarm was fitted but did not activate	15.62%	New indicator	n/a	This would be 49 out of 314 dwelling fires, April to January = 41/262
	209iii	The percentage of dwelling fires attended where no smoke alarm was fitted	49.02%	New indicator	n/a	This would be 154 out of 314 dwelling fires, April to January = 128/262
Corporate Health	2a	The level to which the Fire Authority conforms to the commission for Racial Equality's 'Standard for Local Government'	2	3	✗	
	2b	The duty to promote race equality	89%	89%	✓	
	8	The percentage of undisputed invoices which were paid in 30 days	96.8%	99%	✗	April to February = 3971 out of 4095
	11a	The percentage of top 5% of earners that are women	5.50%	4.7%	✓	18 posts - 1 woman
	11b	The percentage of top 5% of earners that are from ethnic minority communities	5.50%	4.7%	✓	18 posts - 1 from black or ethnic minority community
	11c	The percentage of top 5% of earners that are disabled	0.00%	New indicator	n/a	18 posts - no disabled
	12i	Wholetime uniformed staff proportion of working days/shifts lost to sickness absence	8.07	8.6	✓	Target equates to 1960 days/shifts lost. April to December = 1383 (monthly average 153)
	12ii	All staff proportion of working days/shifts lost to sickness absence	8.08	8.6	✓	Target equates to 2432 days/shifts lost. April to December = 1719 (monthly average 191)
	15i	Wholetime firefighter ill-health retirements as % total workforce	0.0%	1.0%	✓	
	15ii	Control and non-uniformed ill-health retirements as % total workforce	0.0%	0%	✓	
		16a(i)	The percentage of wholetime and retained duty system employees with a disability	0.0%	New indicator	n/a



16a(ii)	The percentage of control and non-uniformed employees with a disability	0.0%	New indicator	n/a	
17a	Percentage uniformed staff from ethnic minority communities	0.8%	4%	✘	This equates to 4 members of uniformed staff. Target needs to be revisited
157	The number of types of interactions that are enabled for delivery as a percentage of the types of interactions that are legally permissible for e-delivery	97.6%	100%	✘	51 elements to be achieved - 1 outstanding for future work, 1 to be completed in the summer
210	The percentage of women firefighters	2.3%	New indicator	n/a	This equates to 9 female firefighters

