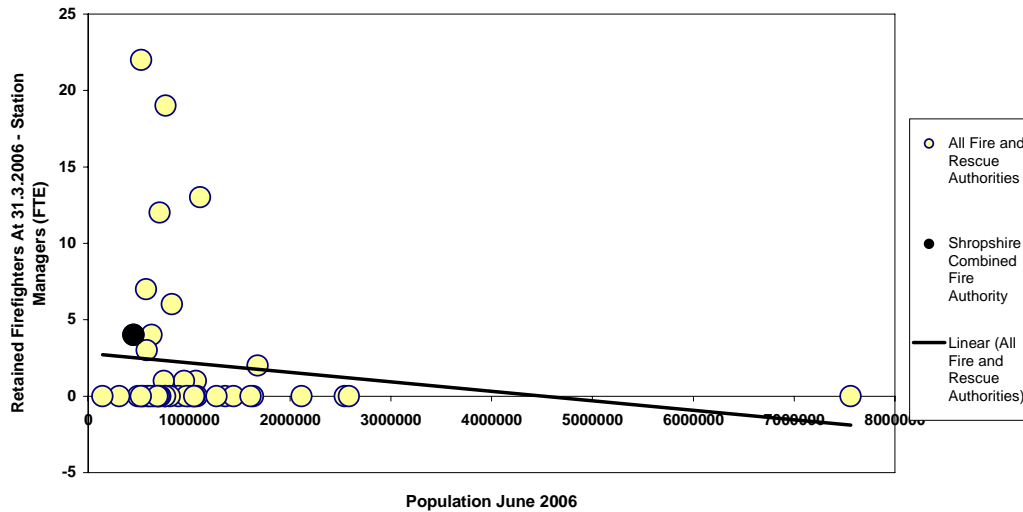


Retained Employees

Station Managers



Nationally

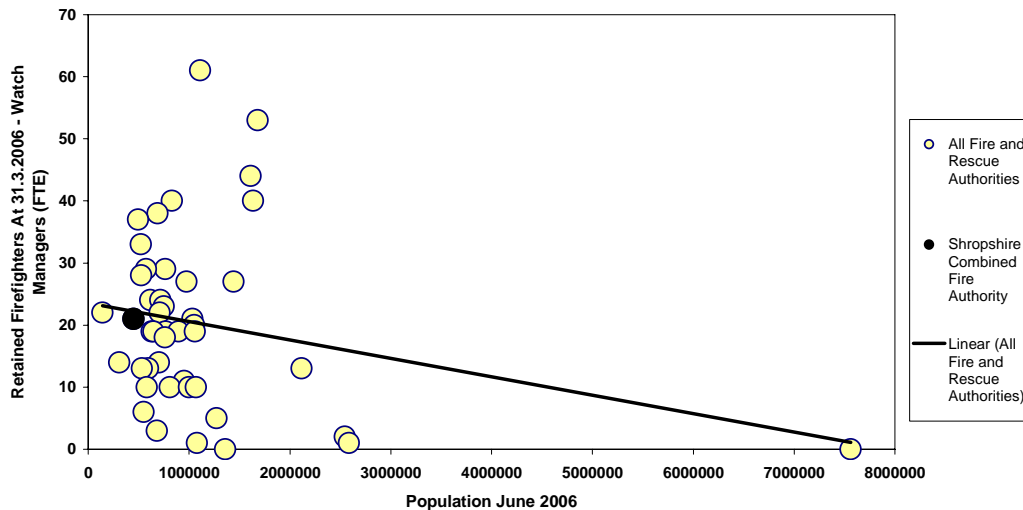
Number of Retained Station Managers decreases as population increases

Shropshire

The number of Retained Station Managers in Shropshire is above the trend line

The Fire Authority has a long held policy of removing Retained Station Manager posts as and when current post-holders retire

Watch Managers



Nationally

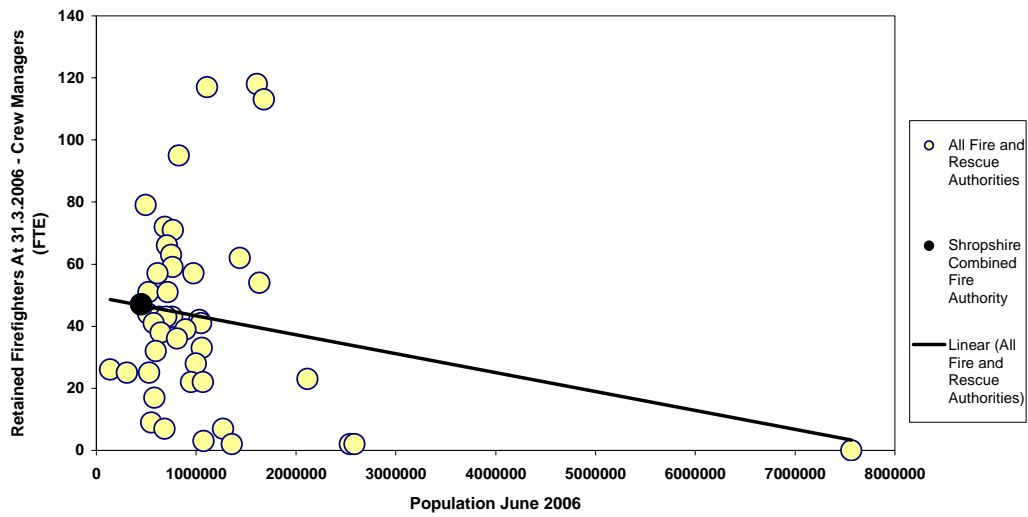
Number of Retained Watch Managers decreases as population increases

Shropshire

The number of Retained Watch Managers in Shropshire is below the trend line



Crew Managers



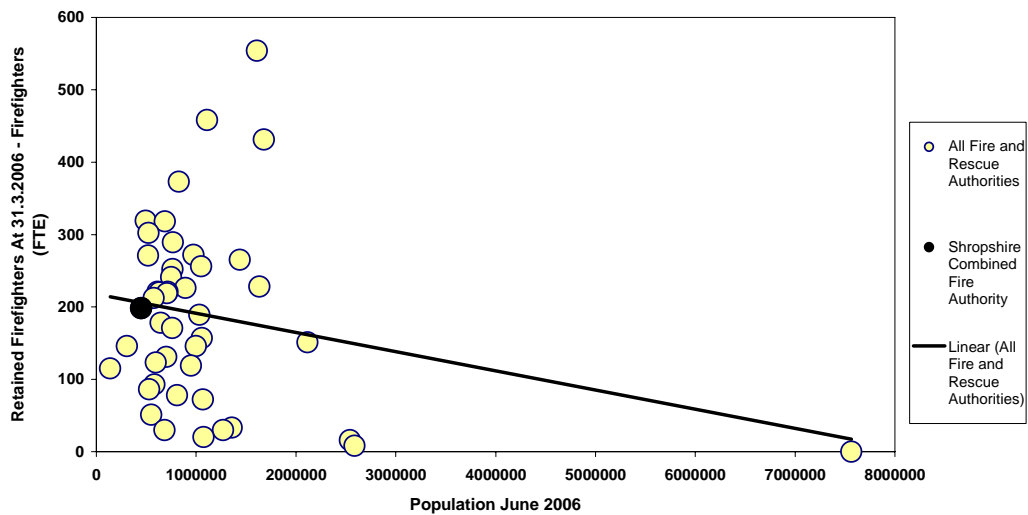
Nationally

Number of Retained Crew Managers decreases as population increases

Shropshire

The number of Retained Crew Managers in Shropshire is on the trend line

Firefighters



Nationally

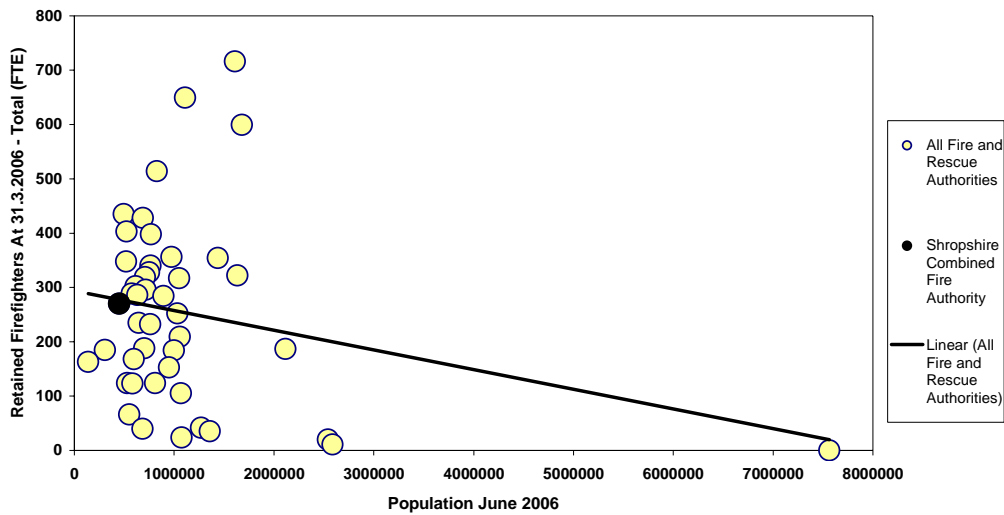
Number of Retained Firefighters decreases as population increases

Shropshire

The number of Retained Firefighters in Shropshire is below the trend line



Total Retained Staff 2006



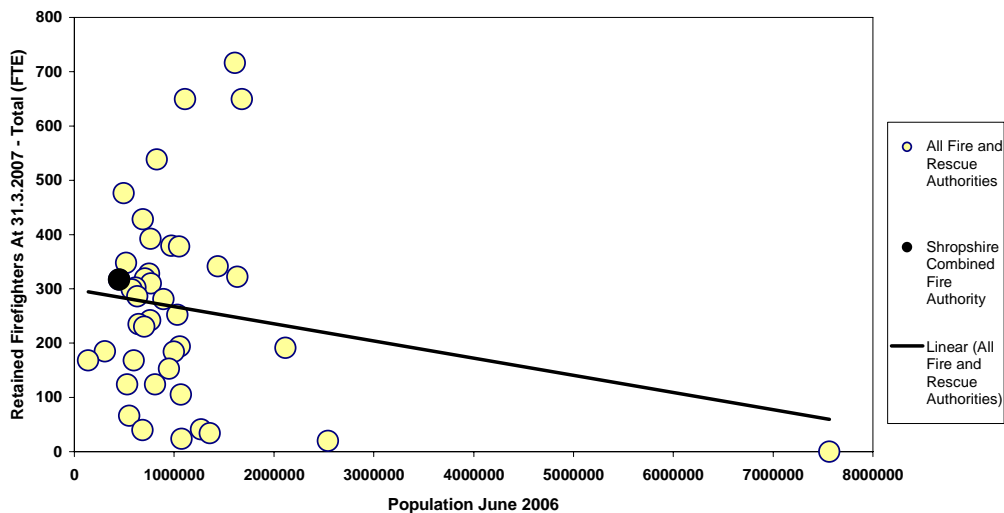
Nationally

The total number of Retained employees decreases as population increases

Shropshire

The number of Retained employees in Shropshire is below the trend line

Total Retained Staff 2007



Shropshire

Following implementation of the Retained Service Best Value Review during 2006/07, the total number of Retained employees will rise above the trend line

