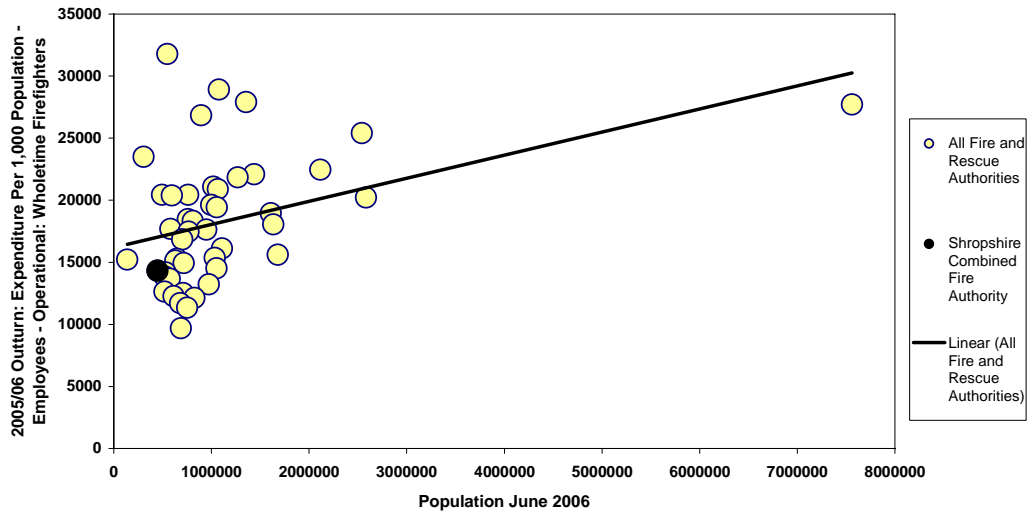


Expenditure

All Wholetime Operational



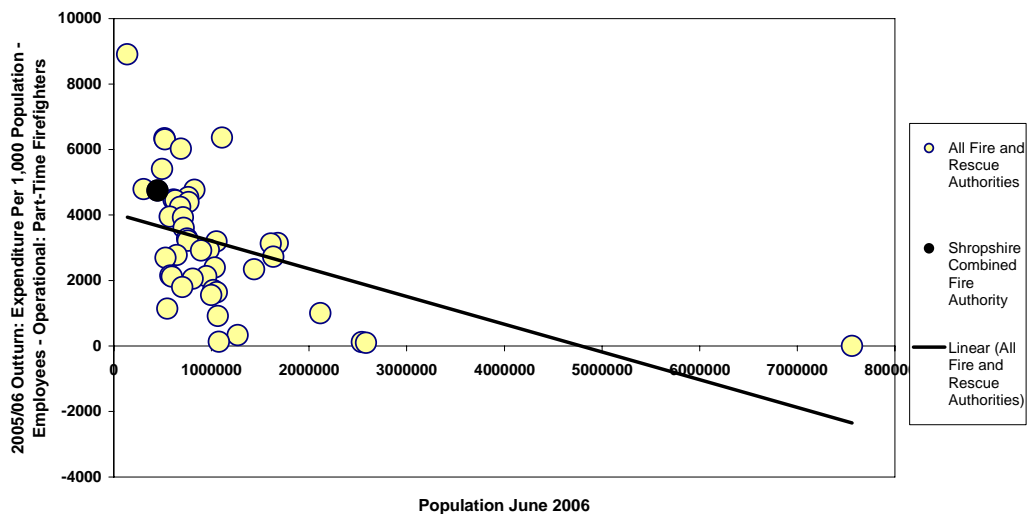
Nationally

Expenditure on wholetime operational employees increases as population increases

Shropshire

Expenditure on wholetime operational employees is below the trend line

Retained



Nationally

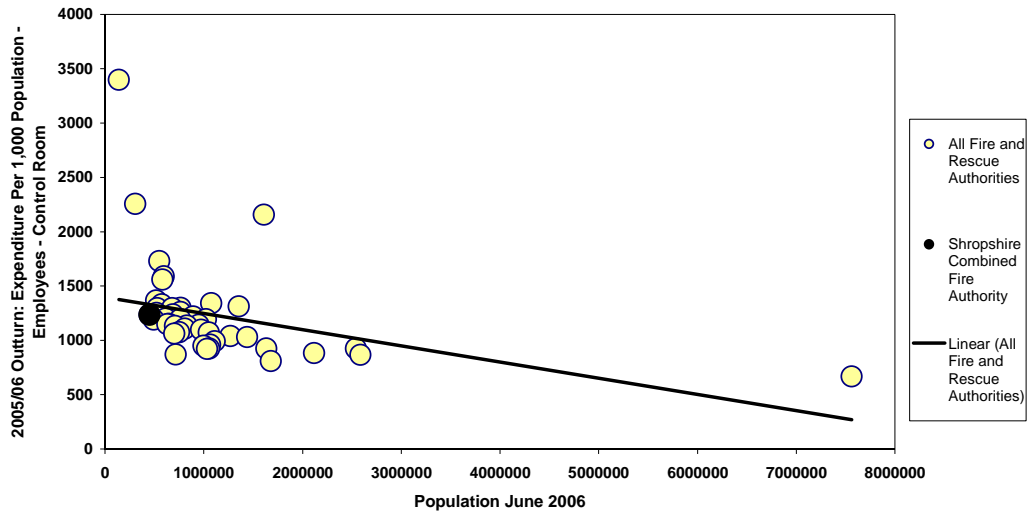
Expenditure on retained employees decreases as population increases

Shropshire

Expenditure on retained employees is above the trend line



Control Room Staff



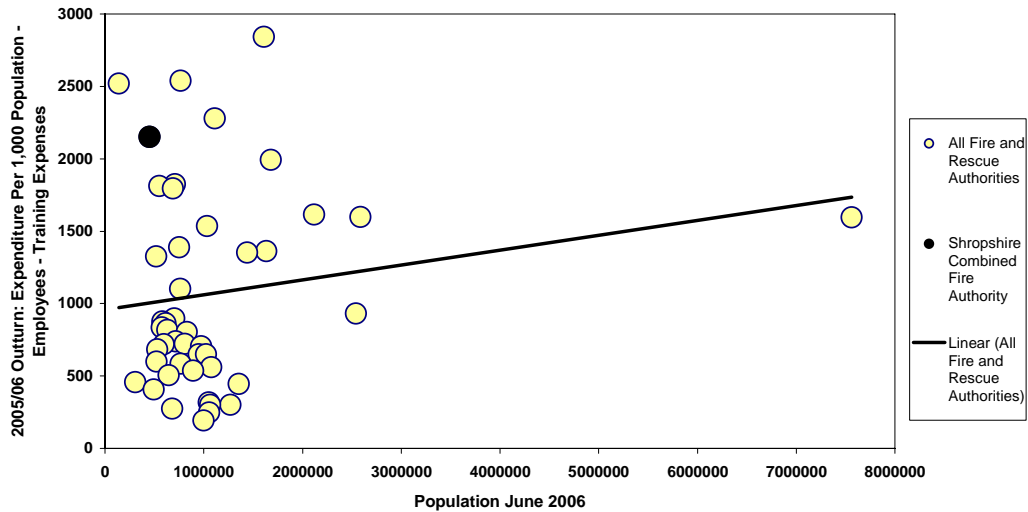
Nationally

Expenditure on control room staff decreases as population increases

Shropshire

Expenditure on control room staff is below the trend line

Training Expenses



Nationally

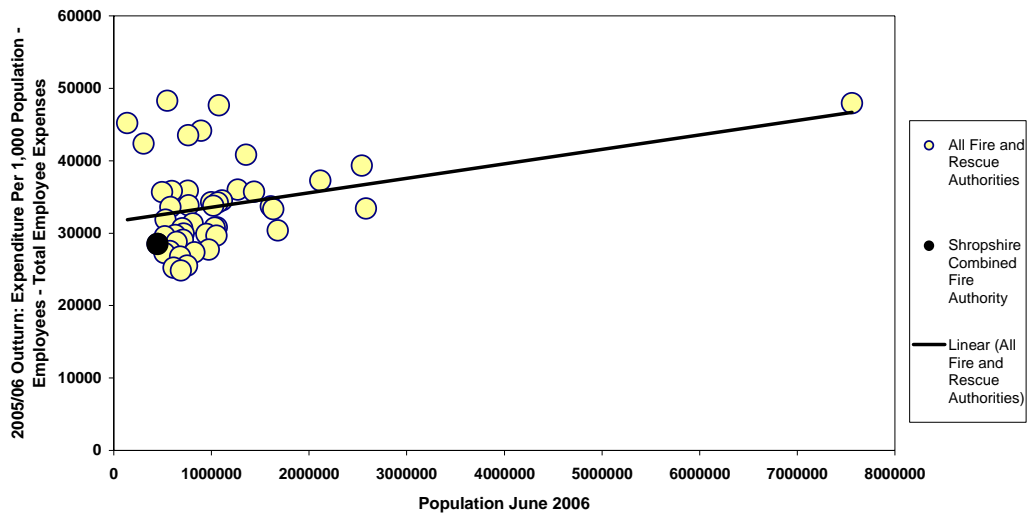
Expenditure on training increases as population increases

Shropshire

Expenditure on training is above the trend line



Total Employee Expenses



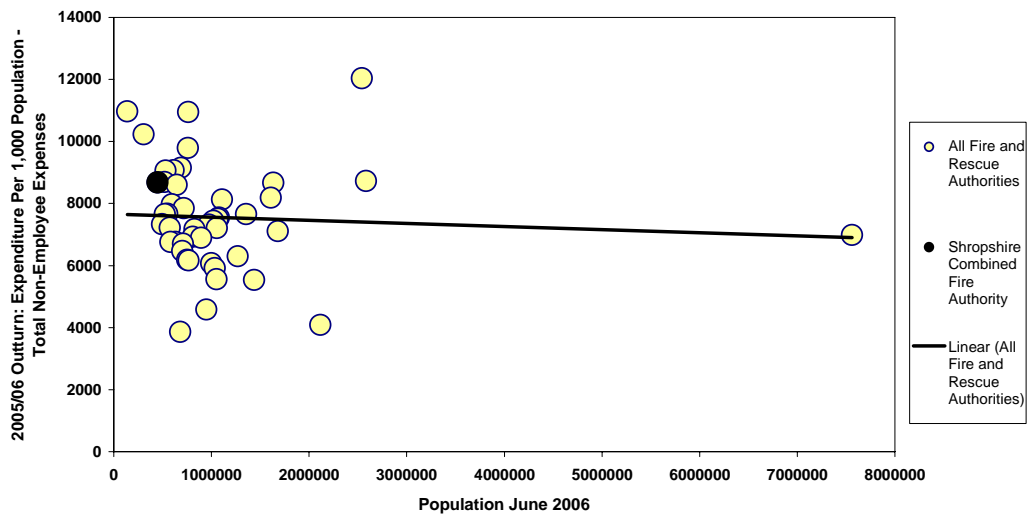
Nationally

Total employee expenditure increases as population increases

Shropshire

Total employee expenditure is below the trend line

Total Non-employee Expenses



Nationally

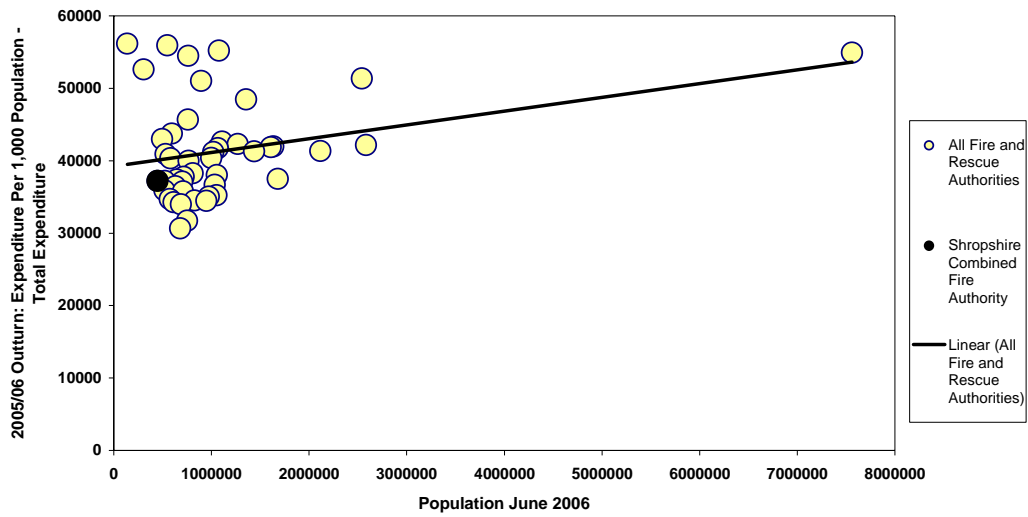
Total non-employee expenditure decreases as population increases

Shropshire

Total non-employee expenditure is above the trend line



Total Expenditure



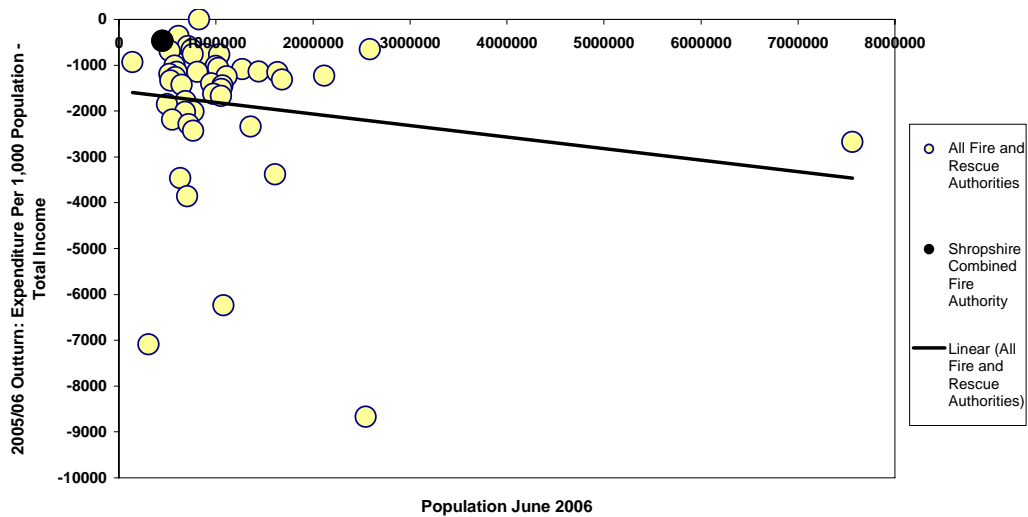
Nationally

Total expenditure increases as population increases

Shropshire

Total expenditure is below the trend line

Total Income



Nationally

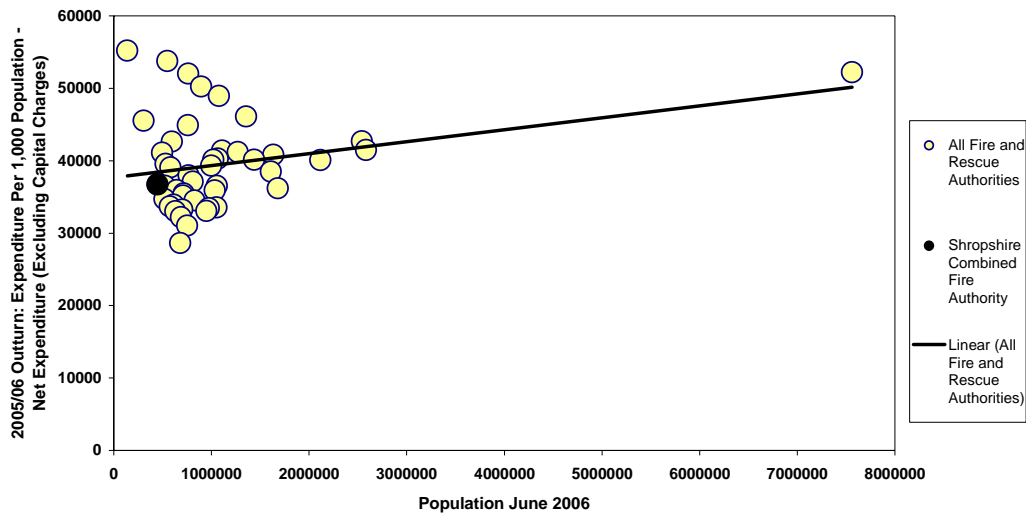
Total income increases as population increases

Shropshire

Total income is lower than the trend



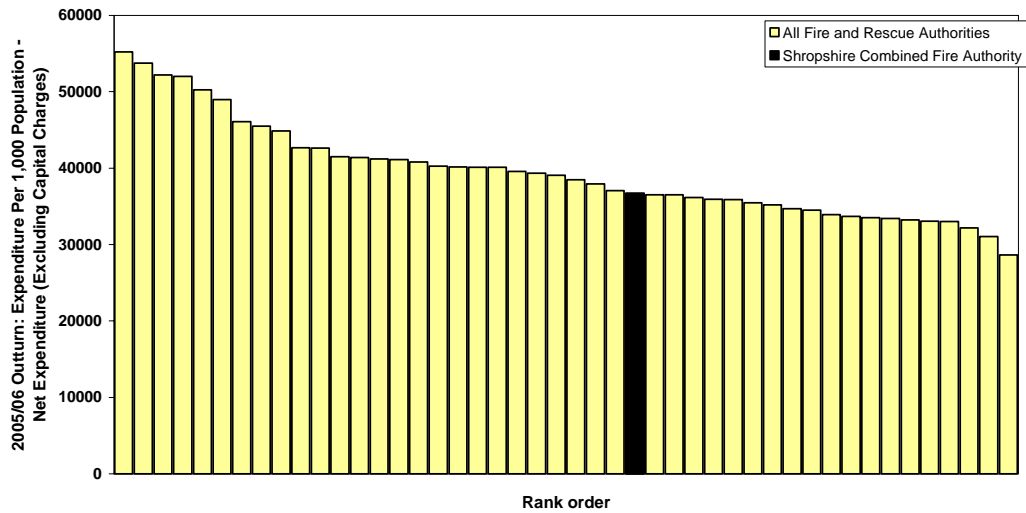
Net Expenditure



Nationally
Net expenditure increases as population increases

Shropshire
Net expenditure is below the trend line

Net Expenditure (Rank Order)



26 FRAs have a greater net expenditure than Shropshire
19 FRAs have a lower net expenditure than Shropshire

