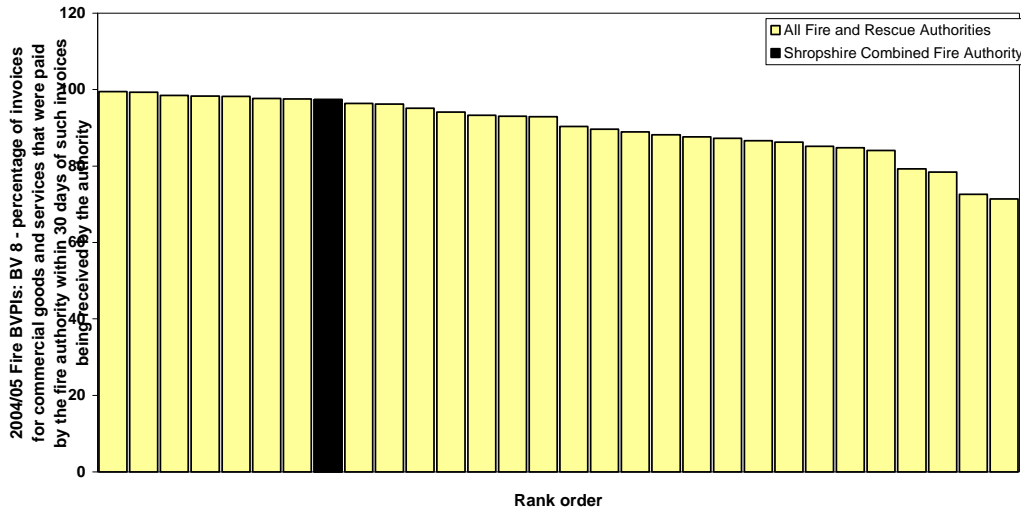
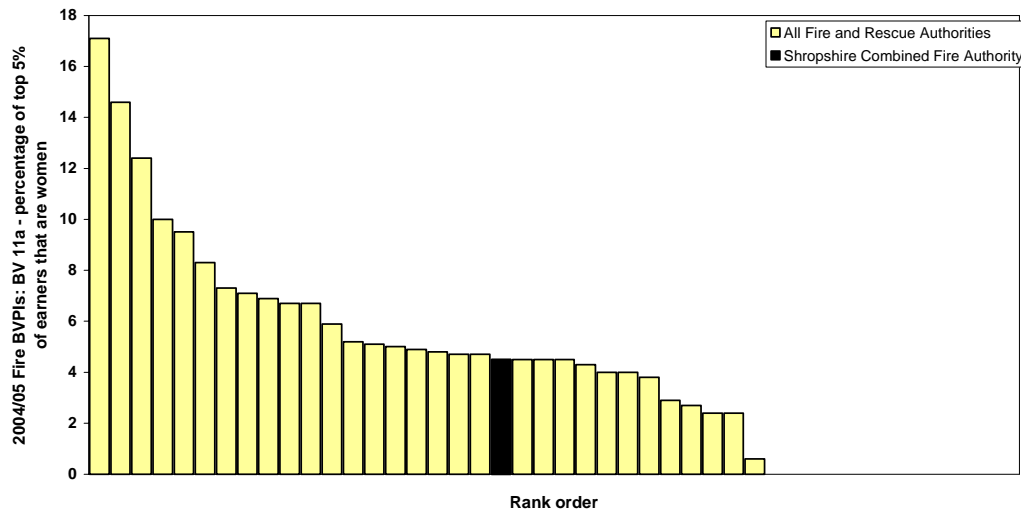




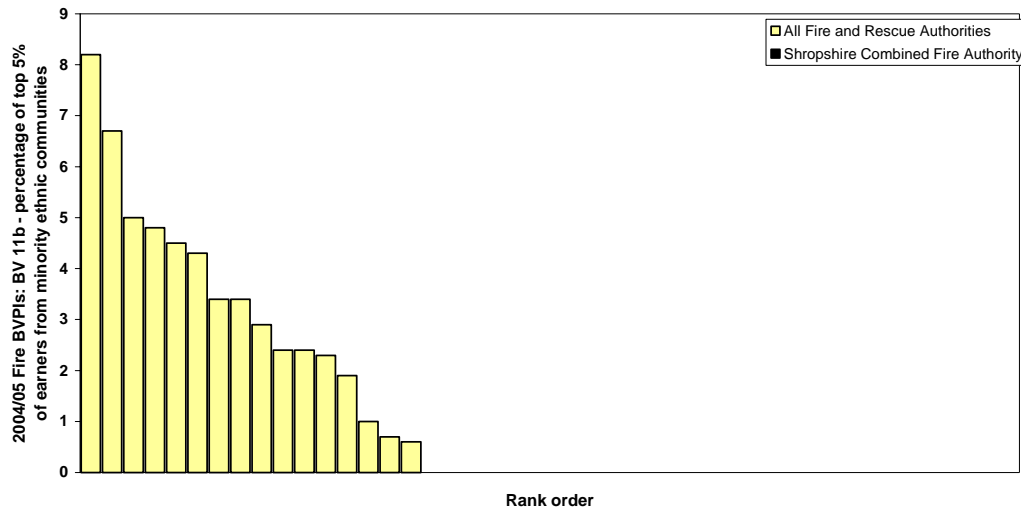
**BV 8 Percentage of invoices for commercial goods and services that were paid by the fire authority within 30 days of such invoices being received by the authority (excl. county fire authorities)**



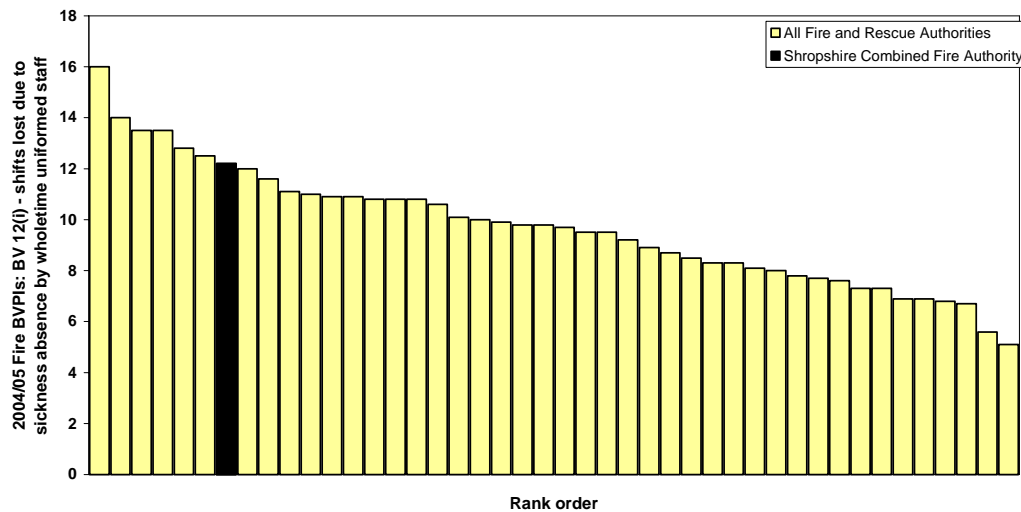
**BV 11a Percentage of top 5% of earners that are women**



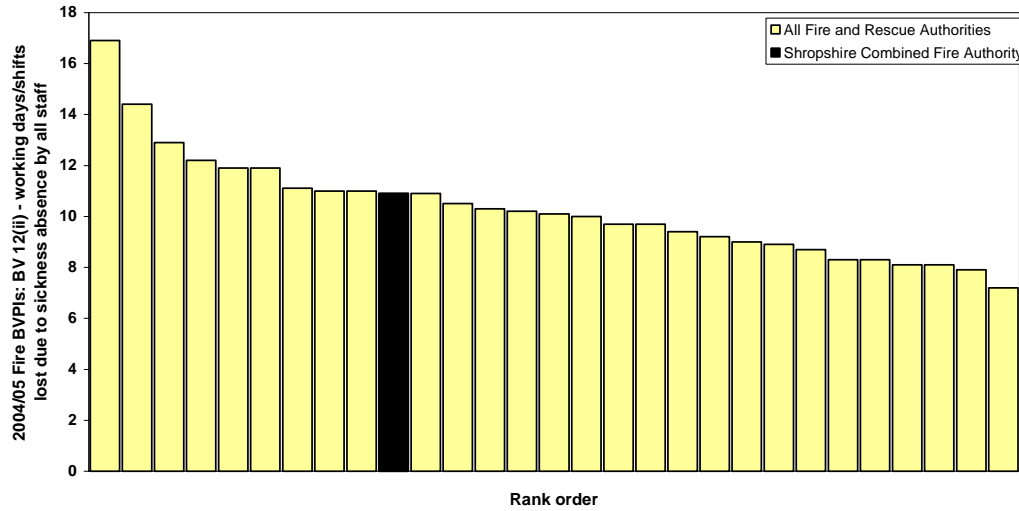
**BV 11b Percentage of top 5% of earners from minority ethnic communities**



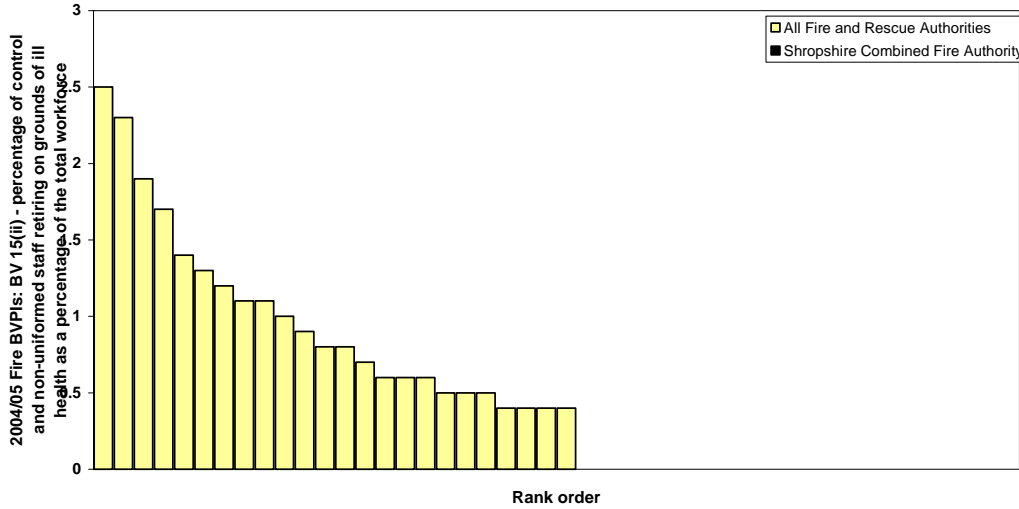
**BV 12(i) Shifts lost due to sickness absence by wholetime uniformed staff (incl. wholetime and control)**



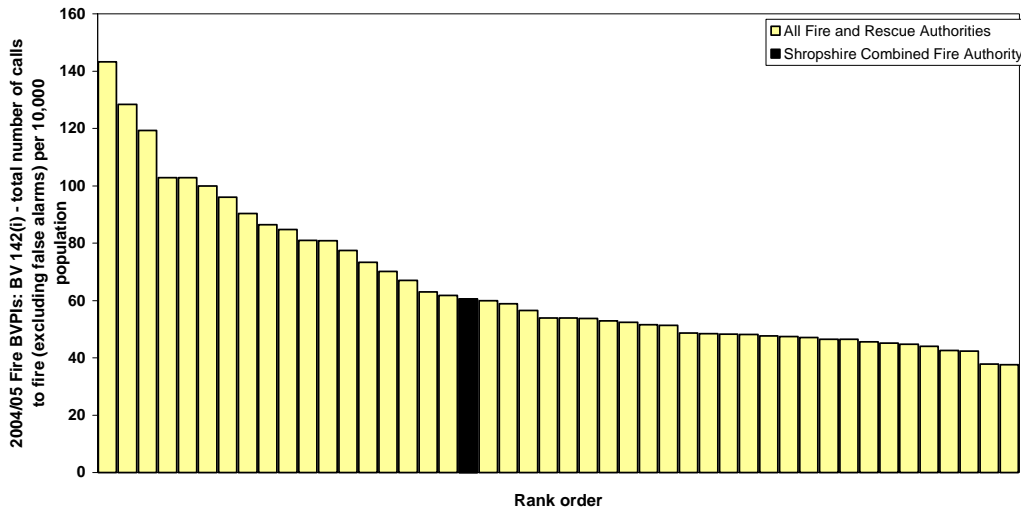
**BV 12(ii) Working days/shifts lost due to sickness absence by all staff (excl. county fire authorities)**



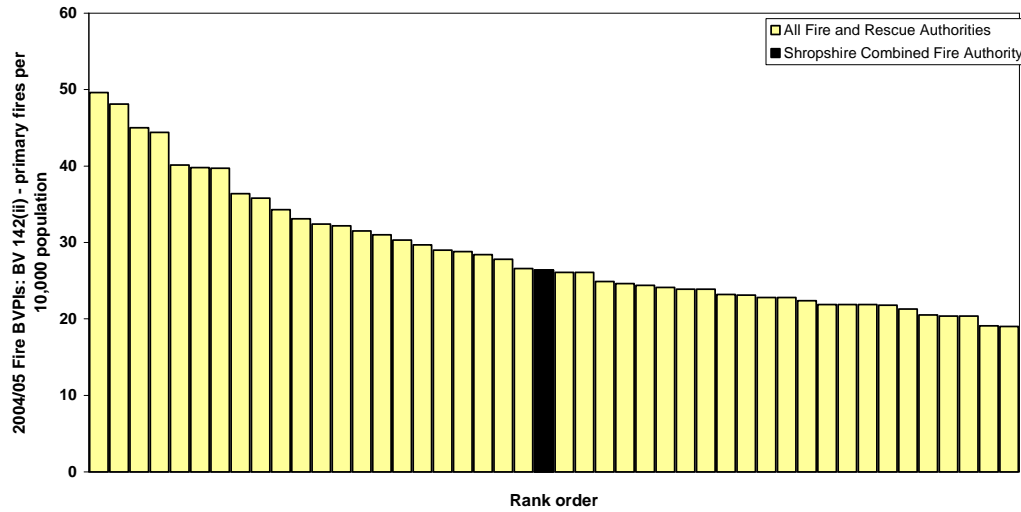
**BV 15(ii) Percentage of control and non-uniformed staff retiring on grounds of ill health as a percentage of the total workforce**



**BV 142(i) Total number of calls to fire (excl. false alarms) per 10,000 population**

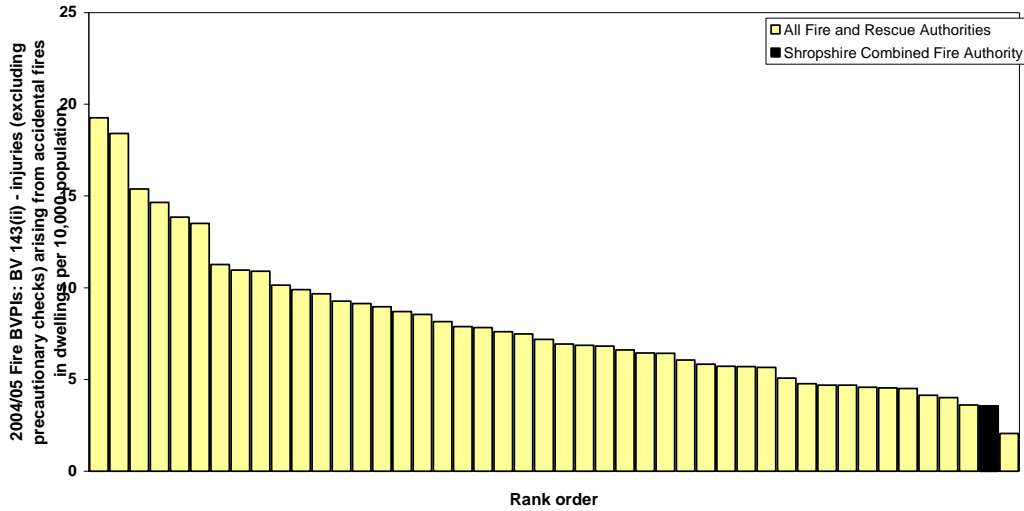


**BV 142(ii) Primary fires per 10,000 population**

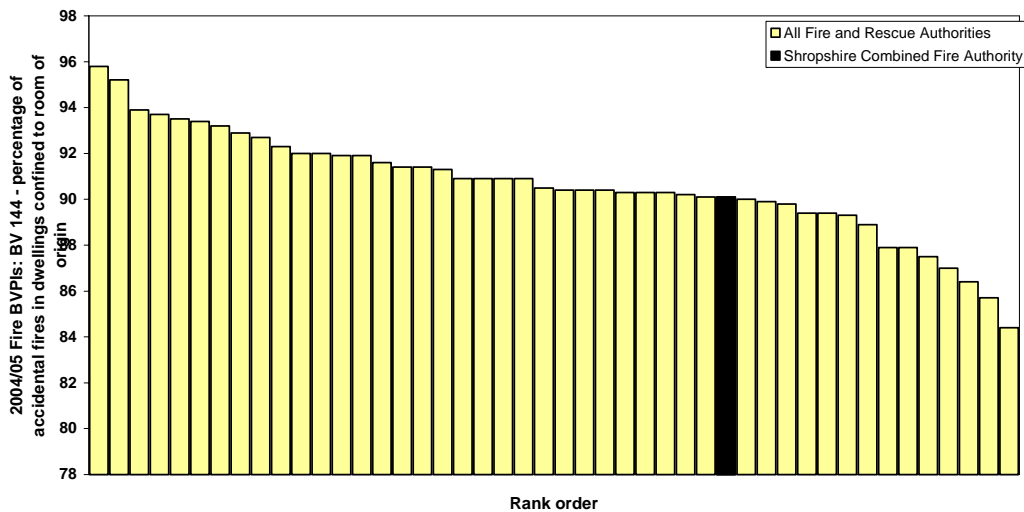




**BV 143(ii) Injuries (excl. precautionary checks) arising from accidental fires in dwellings per 100,000 population**

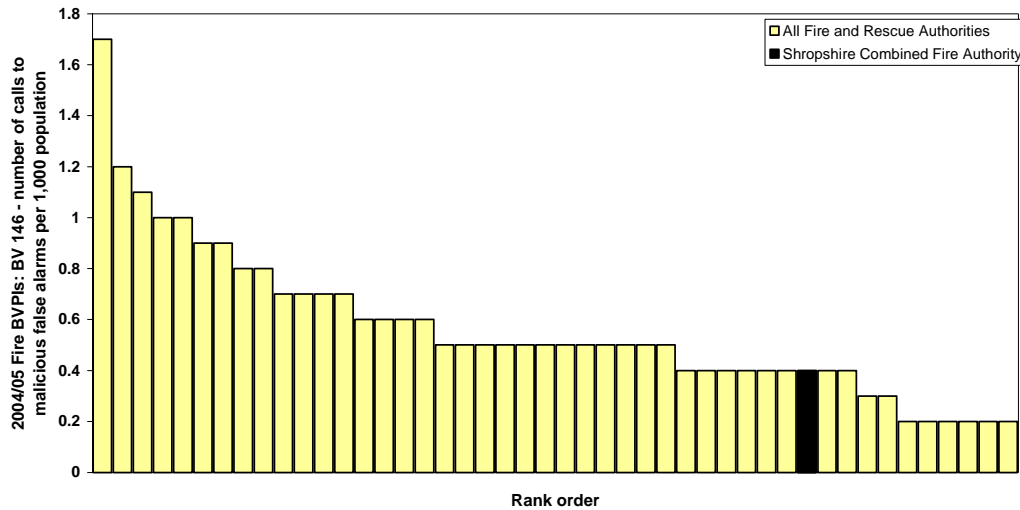


**BV 144 Percentage of accidental fires in dwellings confined to room of origin**

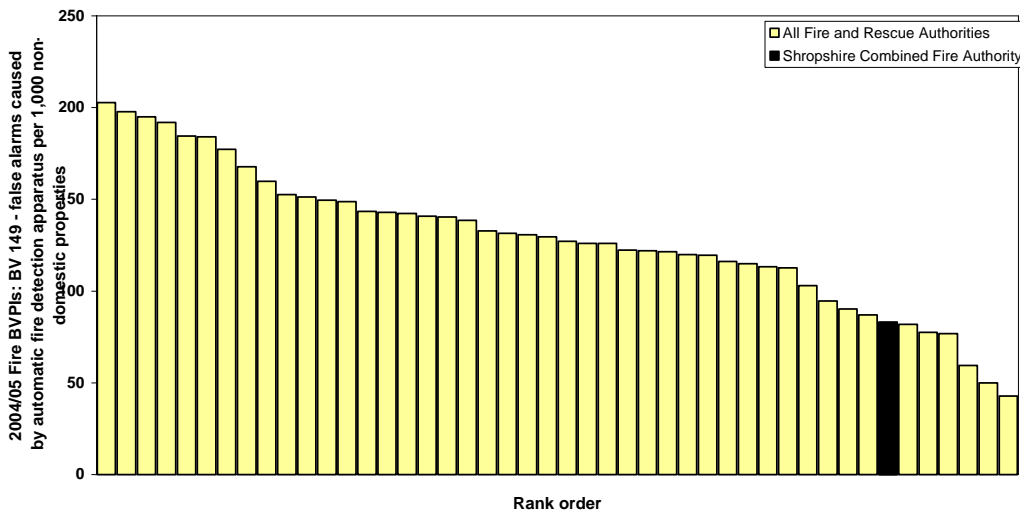




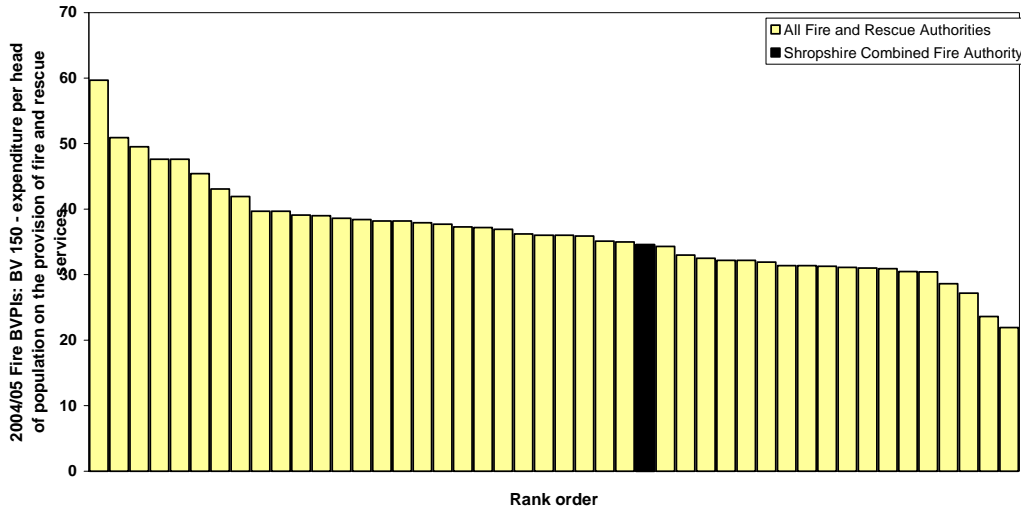
**BV 146 Number of calls to malicious false alarms per 1,000 population**



**BV 149 False alarms caused by automatic fire detection apparatus per 1,000 non-domestic properties**



**BV 150 Expenditure per head of population on the provision of fire and rescue services**



**BV 157 The number of types of interactions that are enabled for electronic delivery as a percentage of interactions that are legally permissible for electronic delivery**

