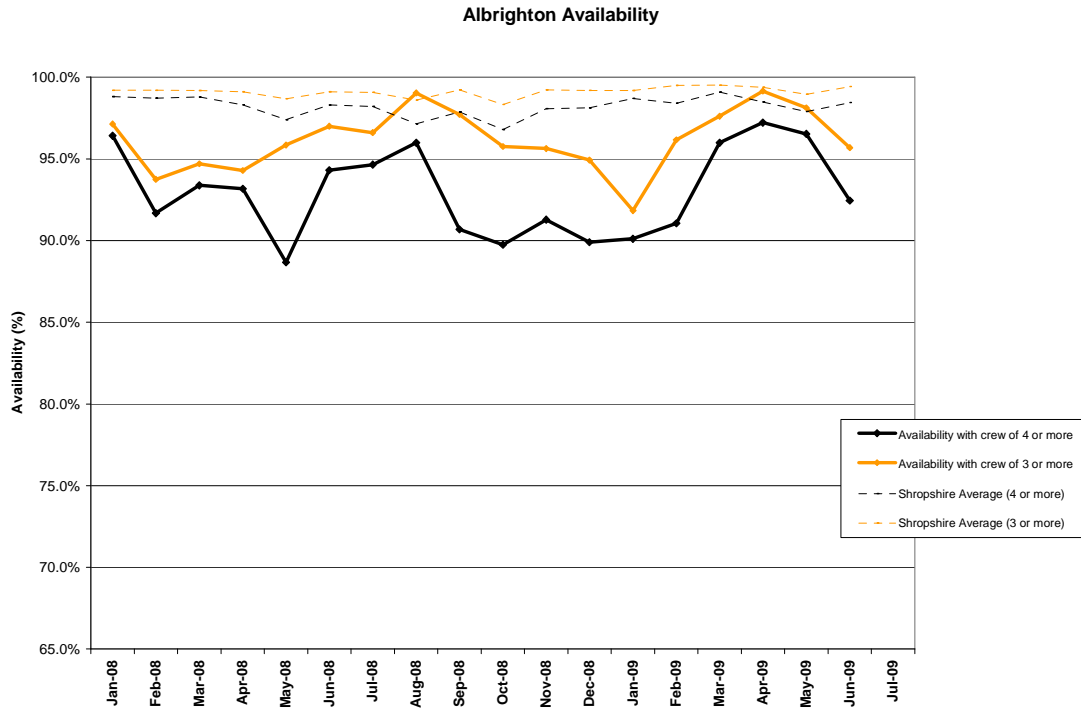
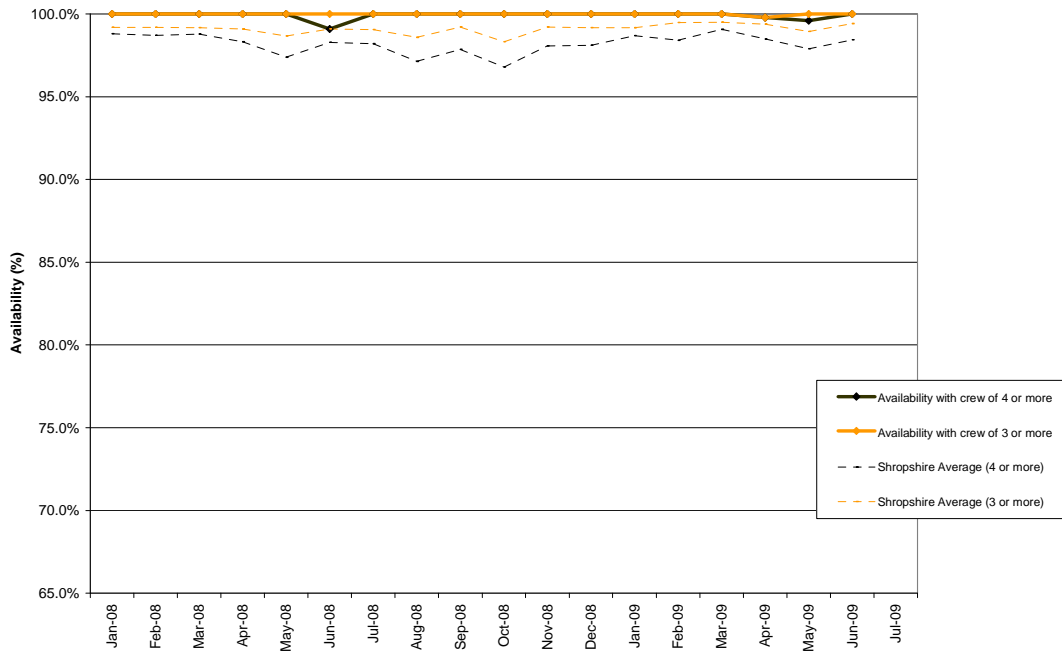


**Retained Appliance Availability for each station from January 2008 up until  
 June 2009.**

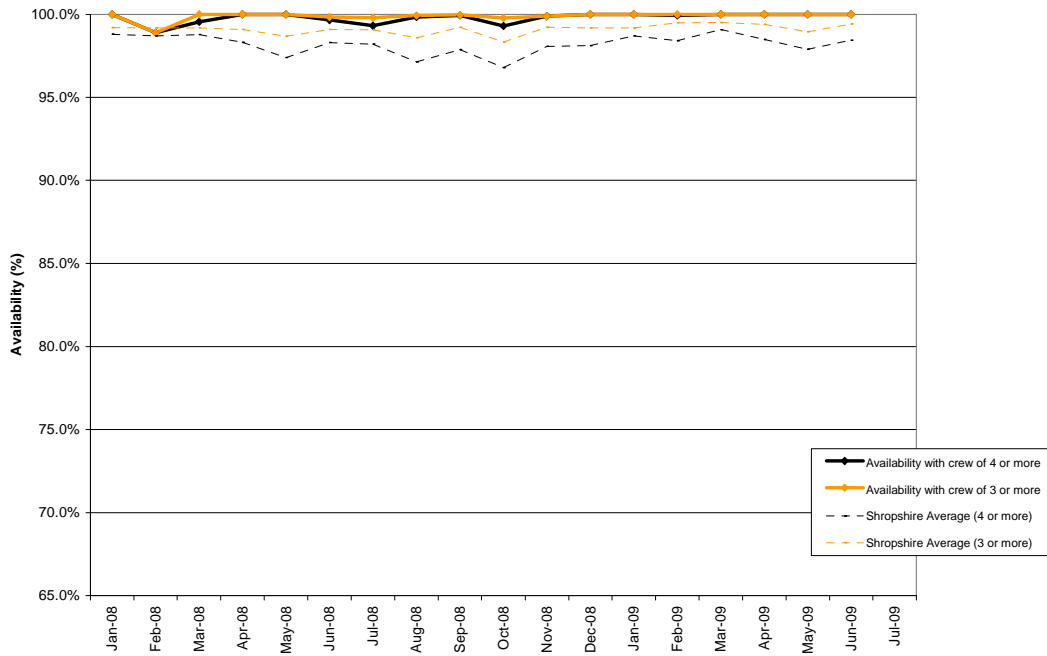


| Quarter 2            | 08:00 – 18:00       | 18:00 – 08:00      |
|----------------------|---------------------|--------------------|
| <b>Off the Run</b>   | 50 hours 13 minutes | 7 hours 55 minutes |
| <b>Supernumerary</b> | 47 hours 36 minutes | 1 hours 32 minutes |

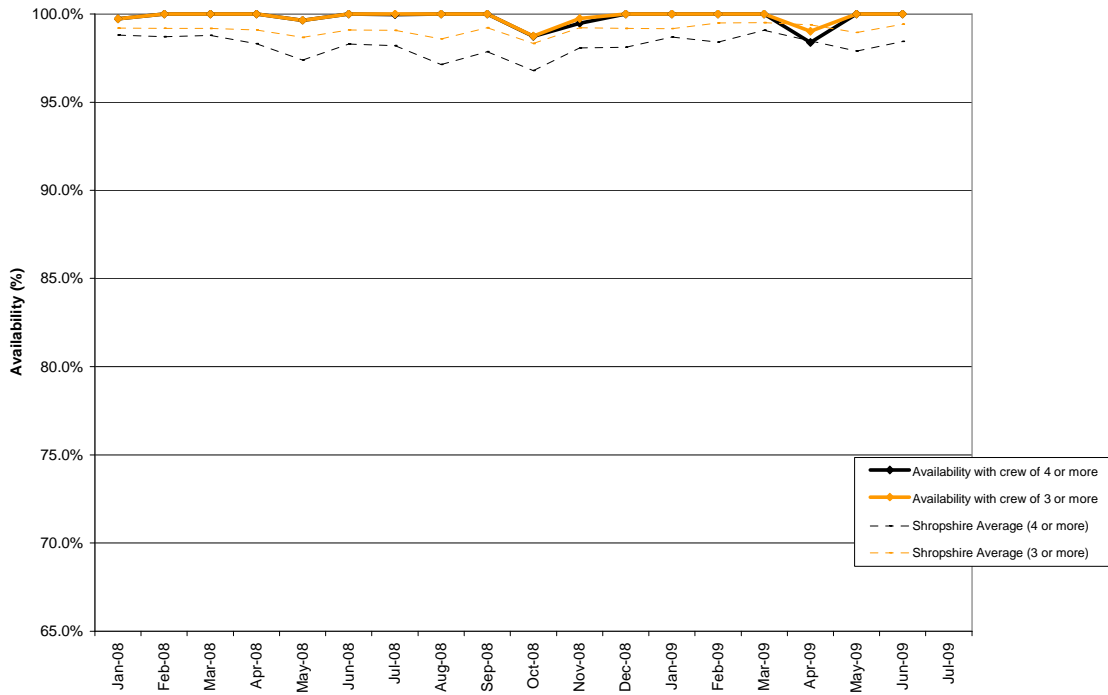
### Bishops Castle Availability



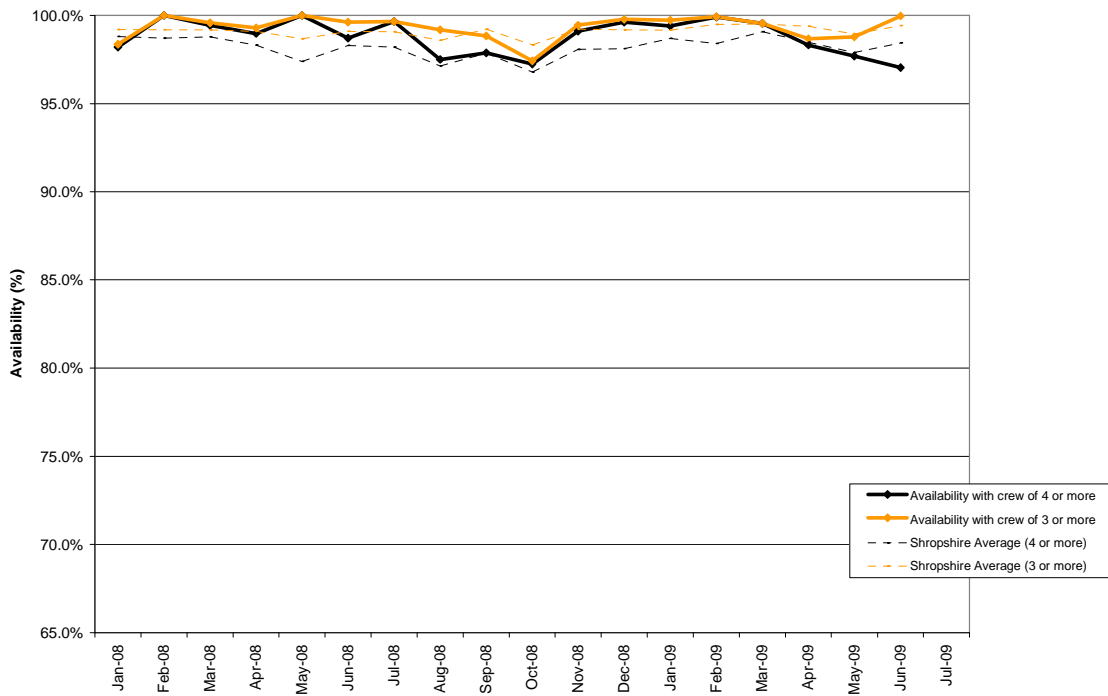
### Bridgnorth Availability



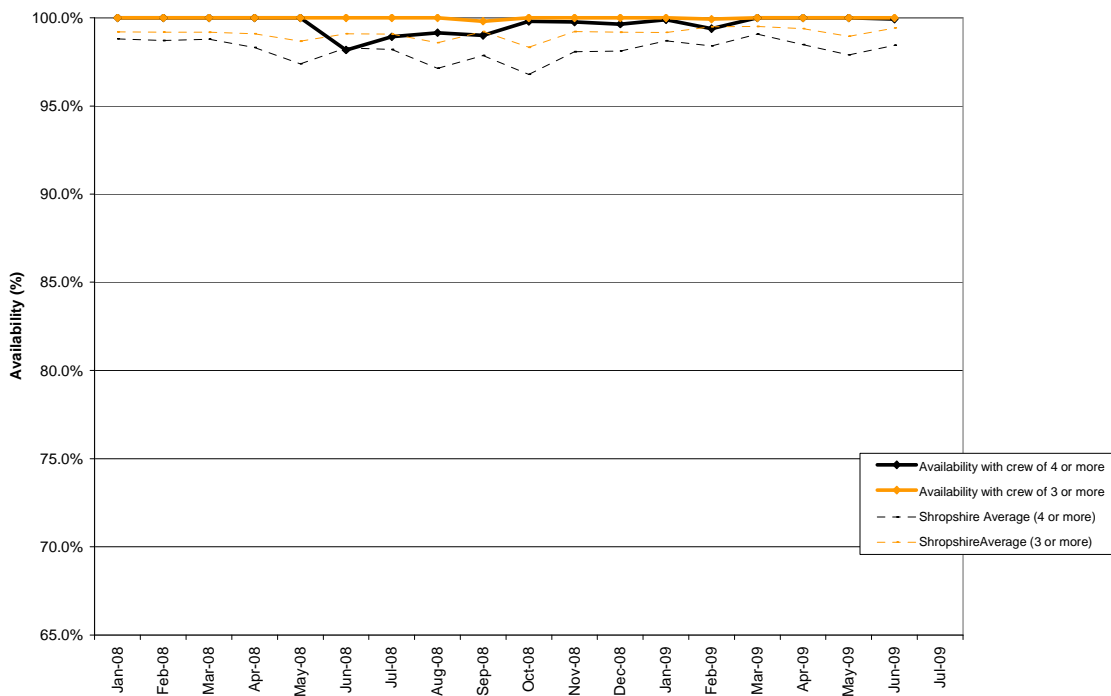
### Baschurch Availability



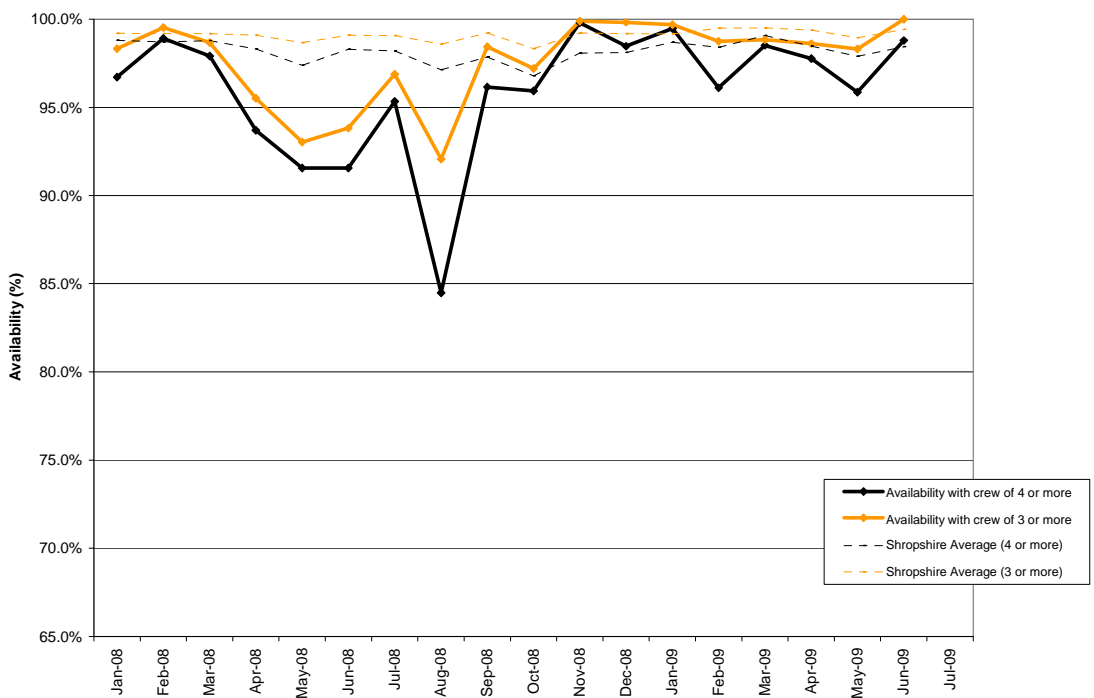
### Craven Arms Availability



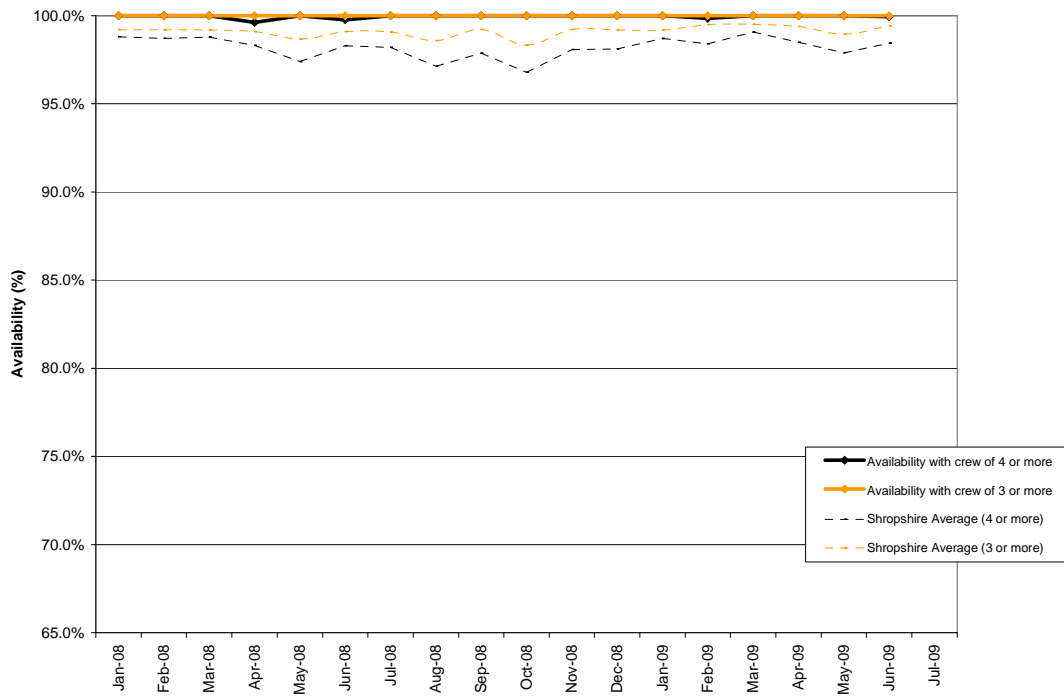
**Clun Availability**



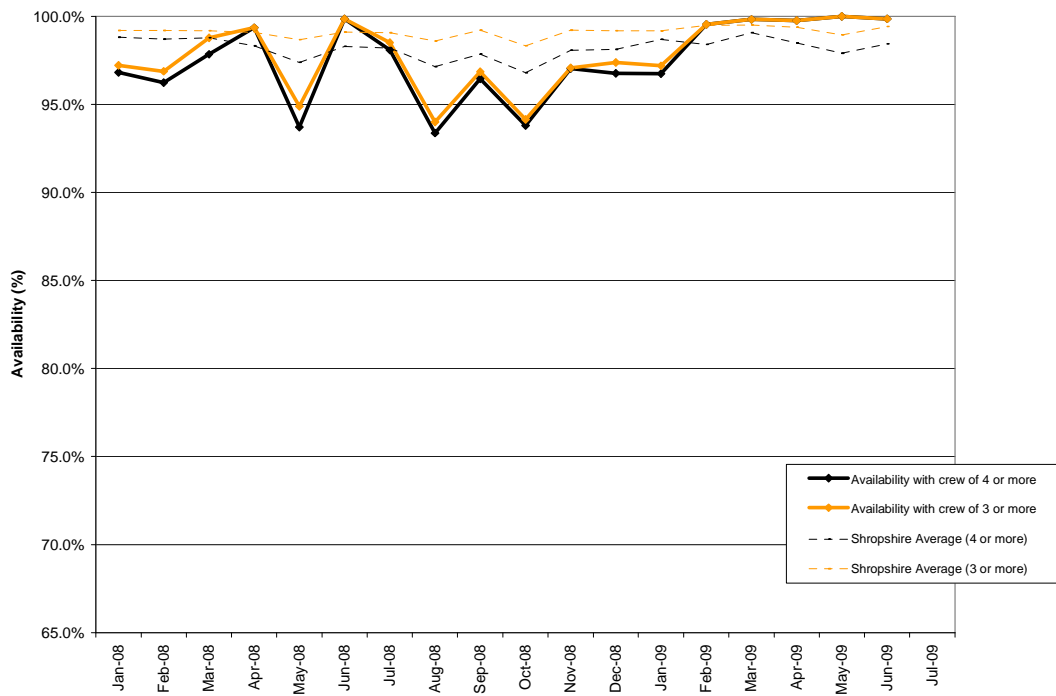
**Cleobury Mortimer Availability**



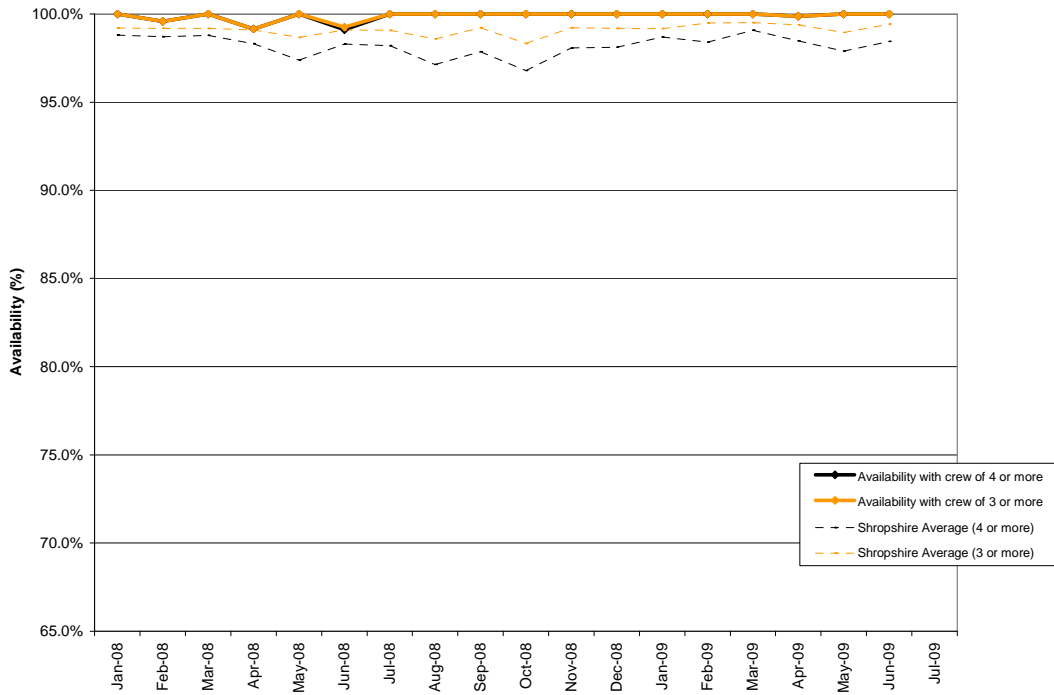
### Church Stretton Availability



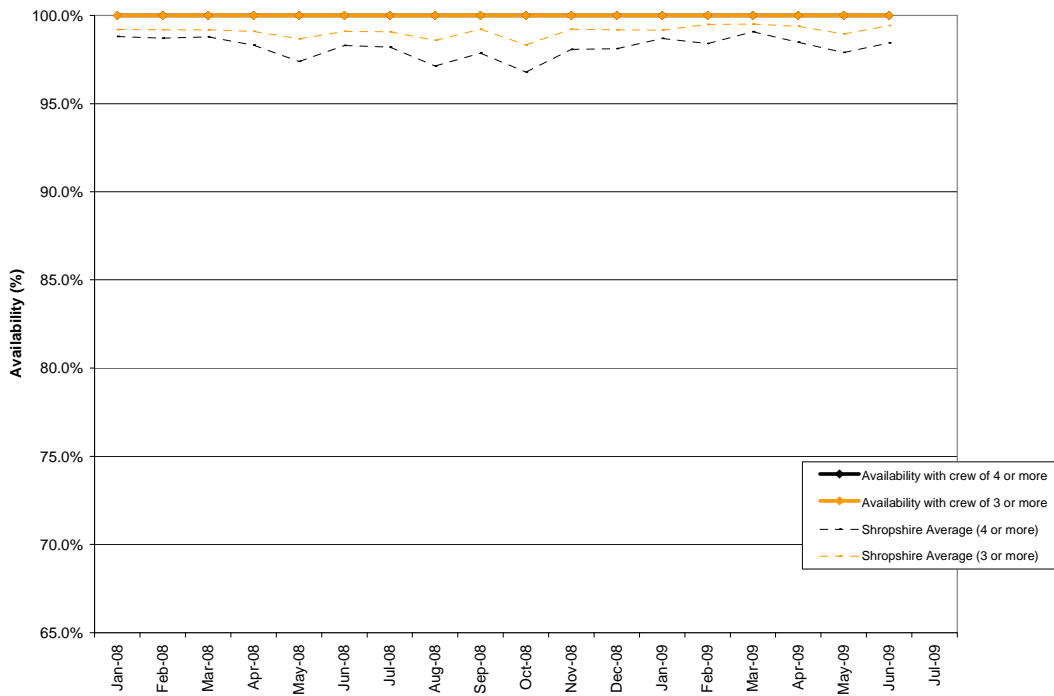
### Ellesmere Availability



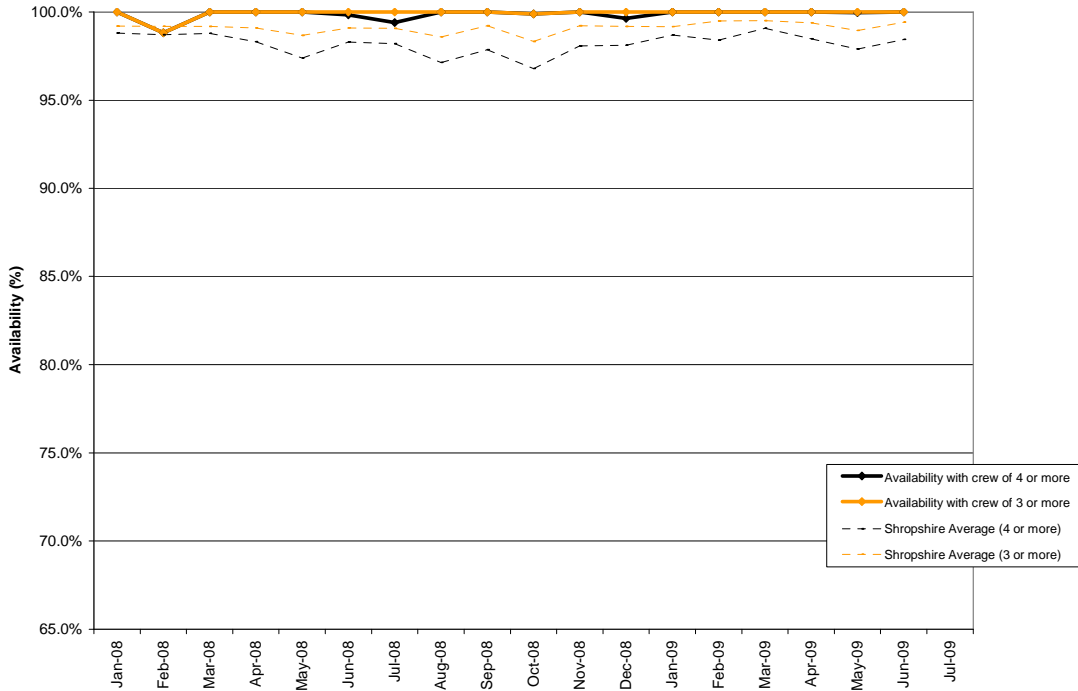
### Hodnet Availability



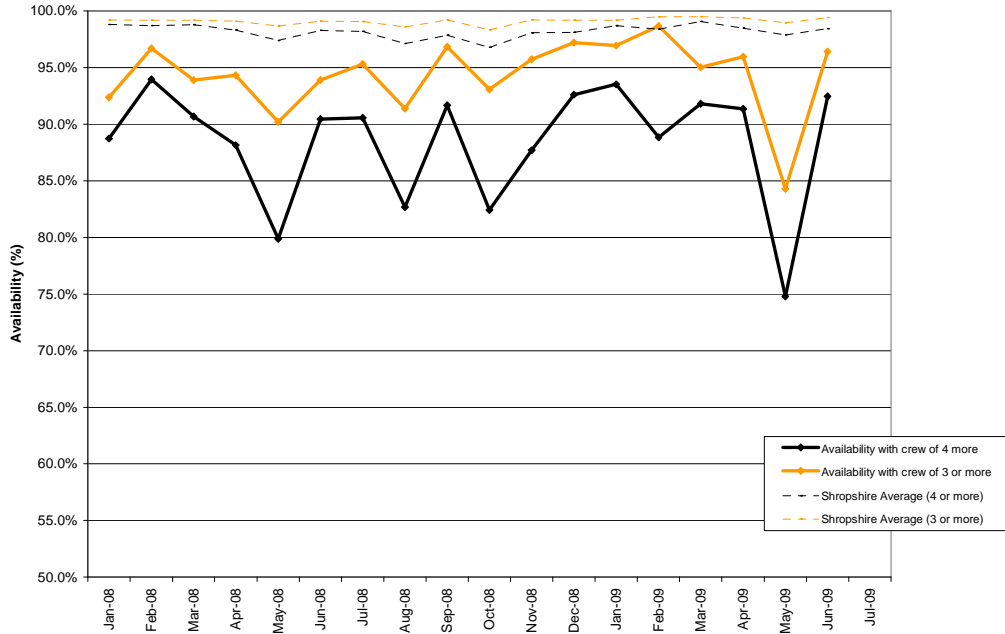
### Ludlow Availability



**Market Drayton Availability**

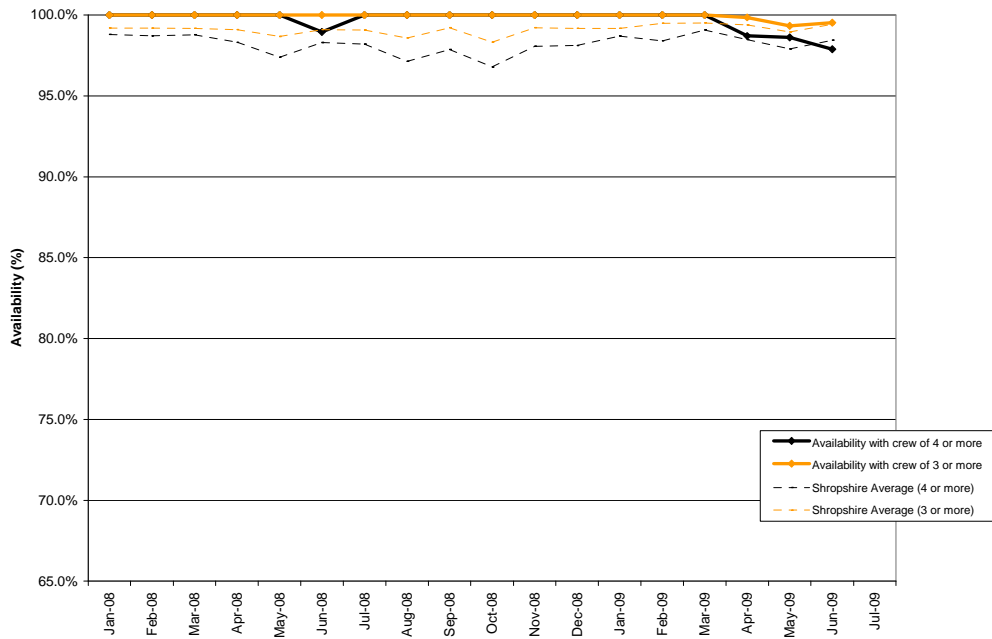


**Much Wenlock Availability**

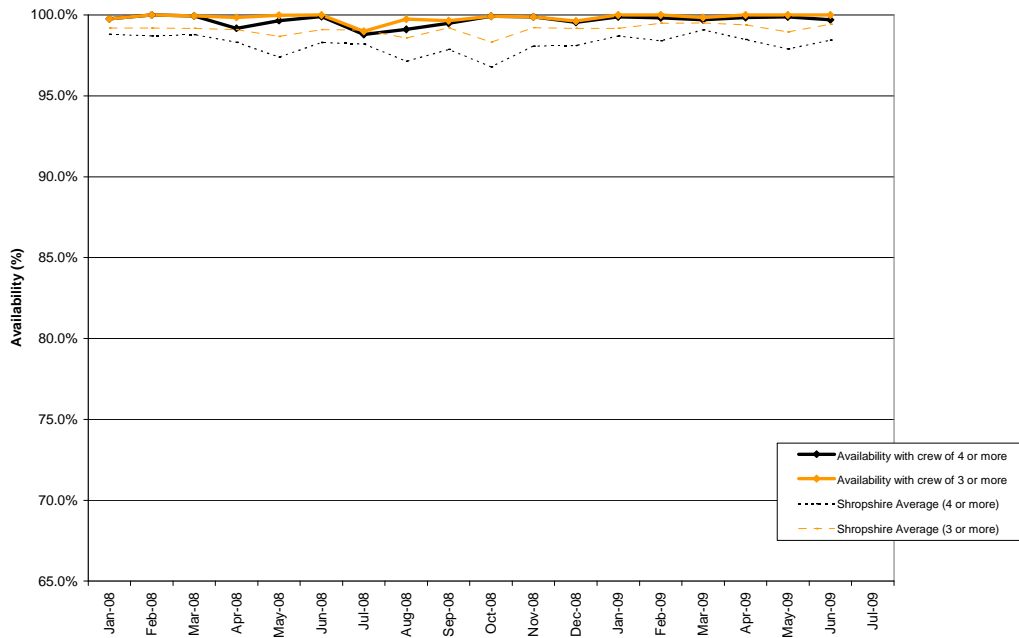


| Quarter 2            | 08:00 – 18:00        | 18:00 – 08:00       |
|----------------------|----------------------|---------------------|
| <b>Off the Run</b>   | 109 hours 16 minutes | 61 hours 40 minutes |
| <b>Supernumerary</b> | 44 hours 35 minutes  | 81 hours 1 minute   |

### Minsterley Availability

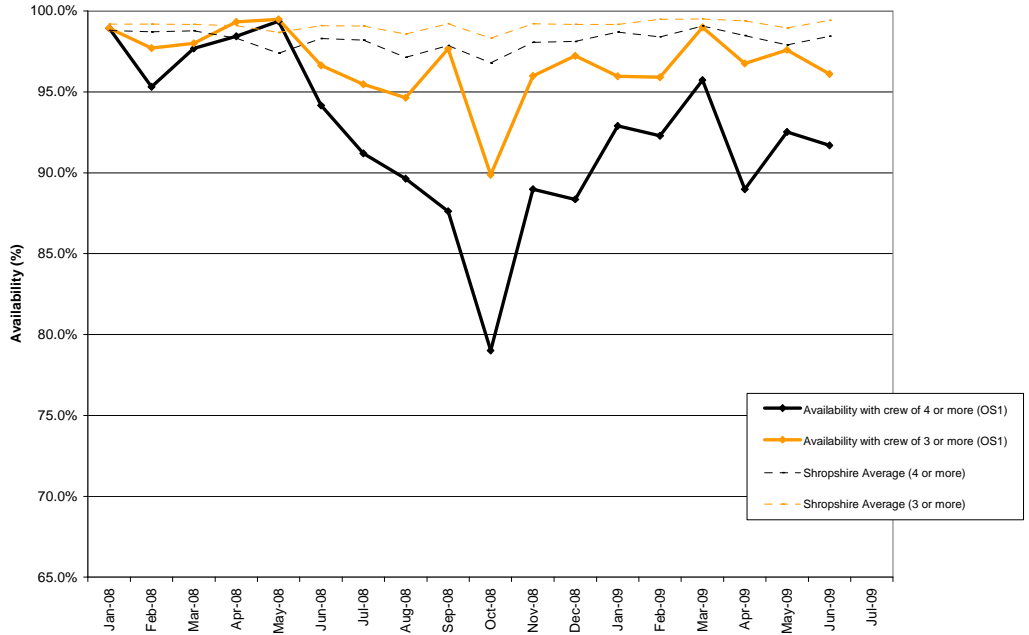


### Newport Availability



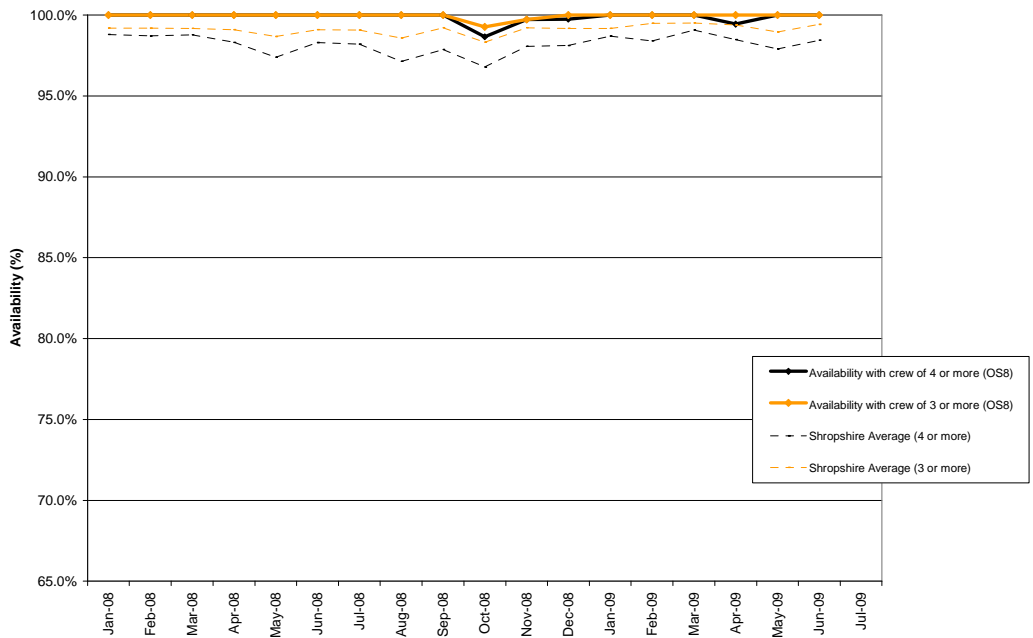


Oswestry (OS1) Availability

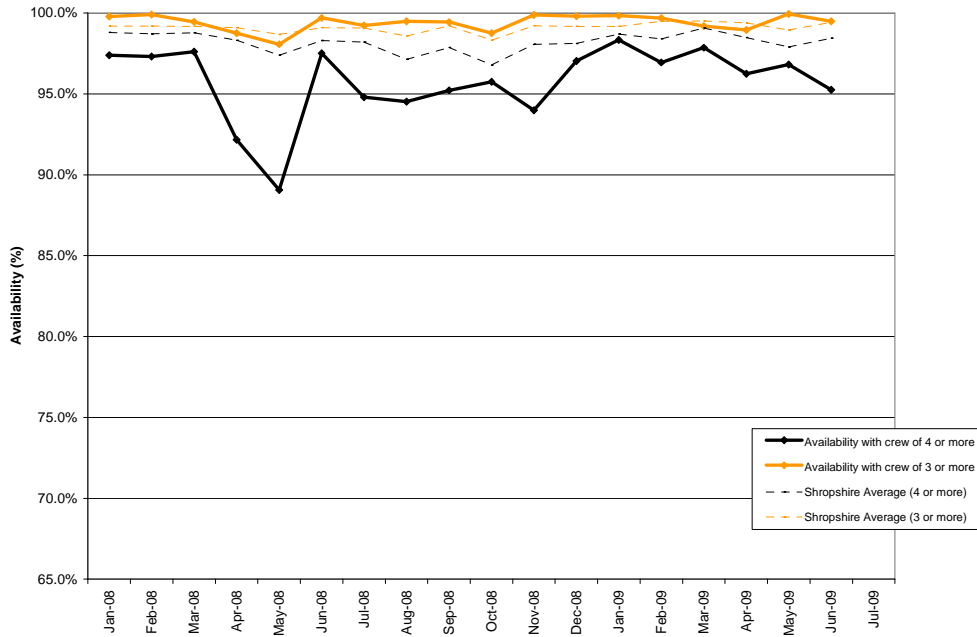


| Quarter 2            | 08:00 – 18:00       | 18:00 – 08:00       |
|----------------------|---------------------|---------------------|
| <b>Off the Run</b>   | 50 hours 40 minutes | 20 hours            |
| <b>Supernumerary</b> | 96 hours 44 minutes | 28 hours 52 minutes |

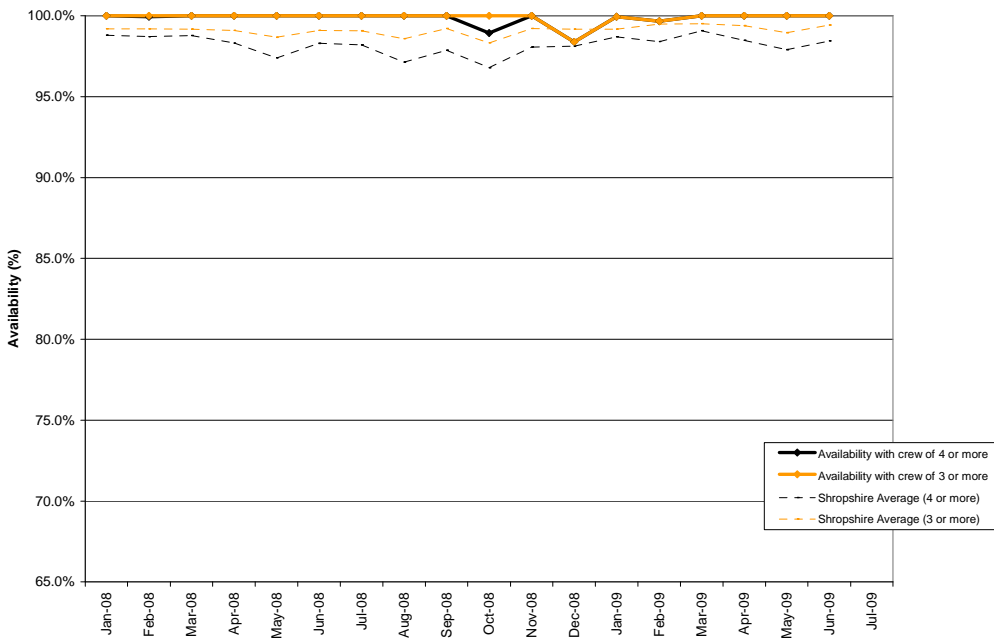
Oswestry (OS8) Availability



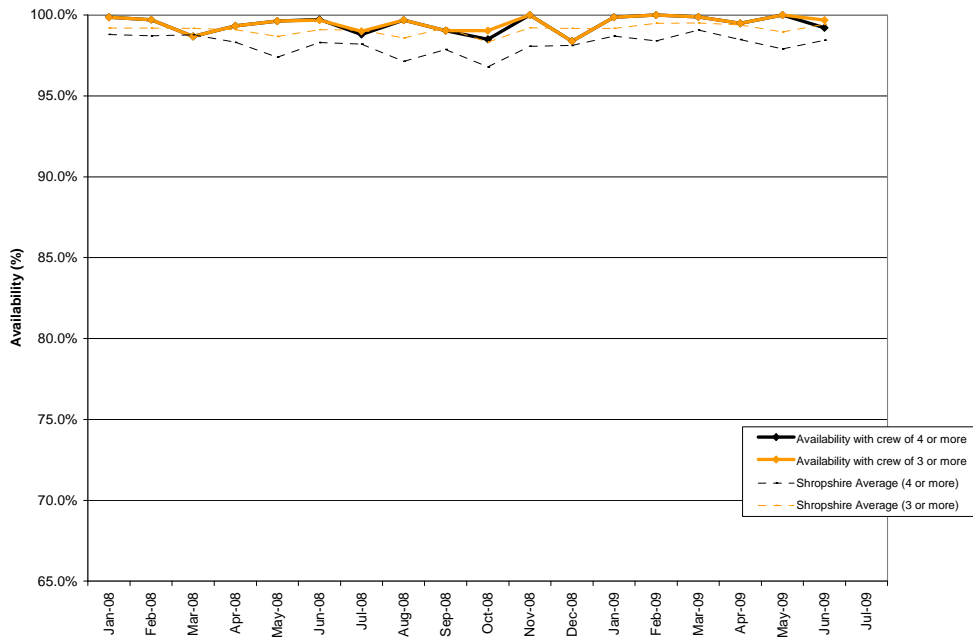
Prees Availability



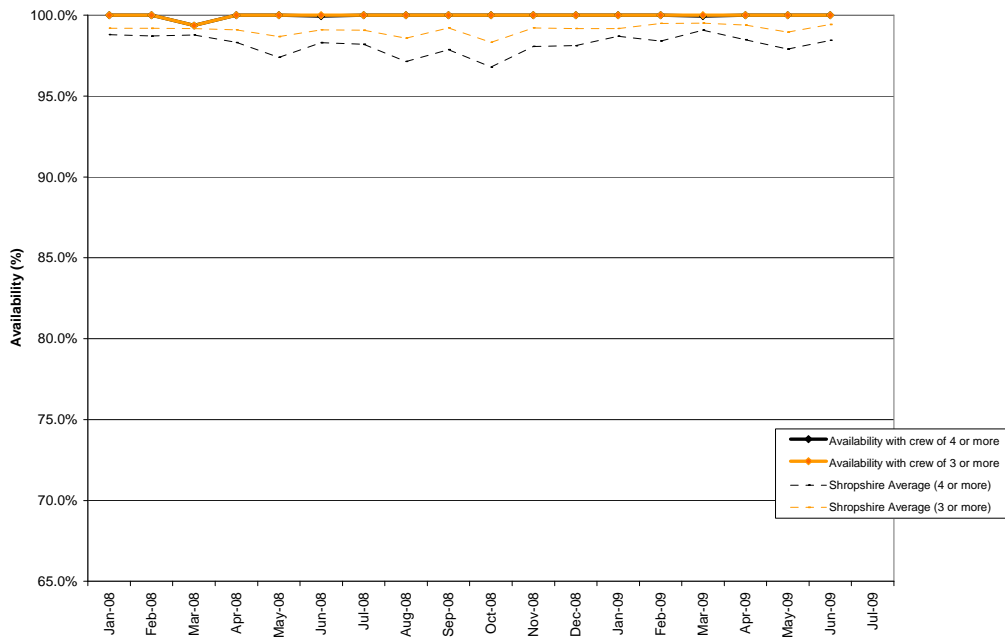
Shrewsbury Retained Availability



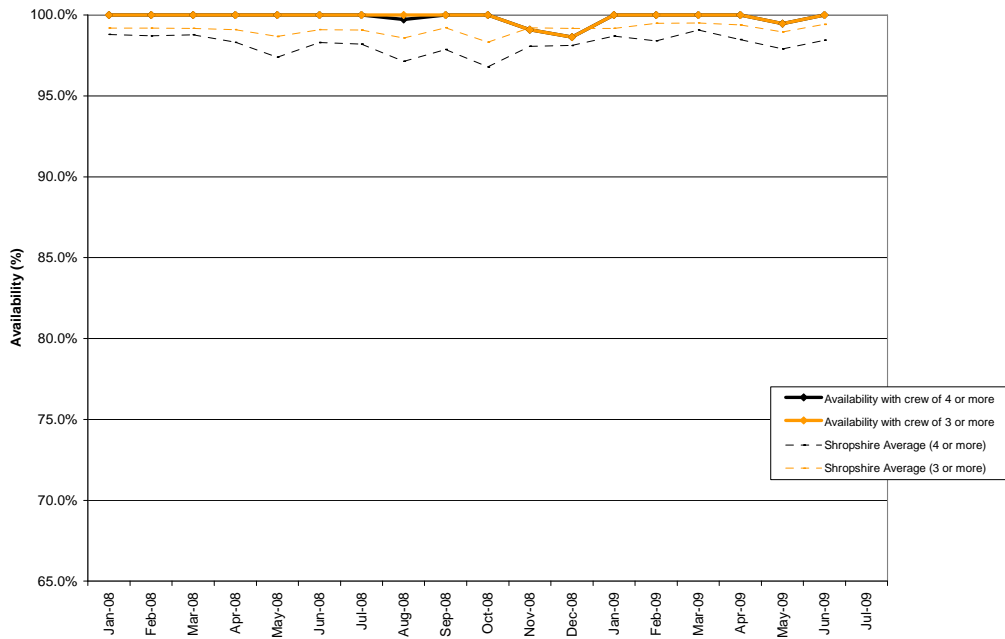
### Tweeddale Availability



### Whitchurch Availability



### Wellington Retained Availability



### Wem Availability

