



# CIPFA Statistics 2006 Analysis Results

Strategy and Resources Committee  
24 May 2007

---

**PUTTING SHROPSHIRE'S  
SAFETY FIRST**





# Introduction

CIPFA Statistics analysed to benchmark Shropshire Fire and Rescue Service with other English Fire and Rescue Services

Service Assessments will expect evidence that we have carried this out.





The following two values are quoted on the following graphs:

- **Correlation Coefficient**
  - Looking for a relationship between the two variables and is expressed between -1 and +1
- **Coefficient of Determination  $R^2$** 
  - The certainty of the line of best fit and is expressed between 0 and +1



# Operational Staff Costs



4

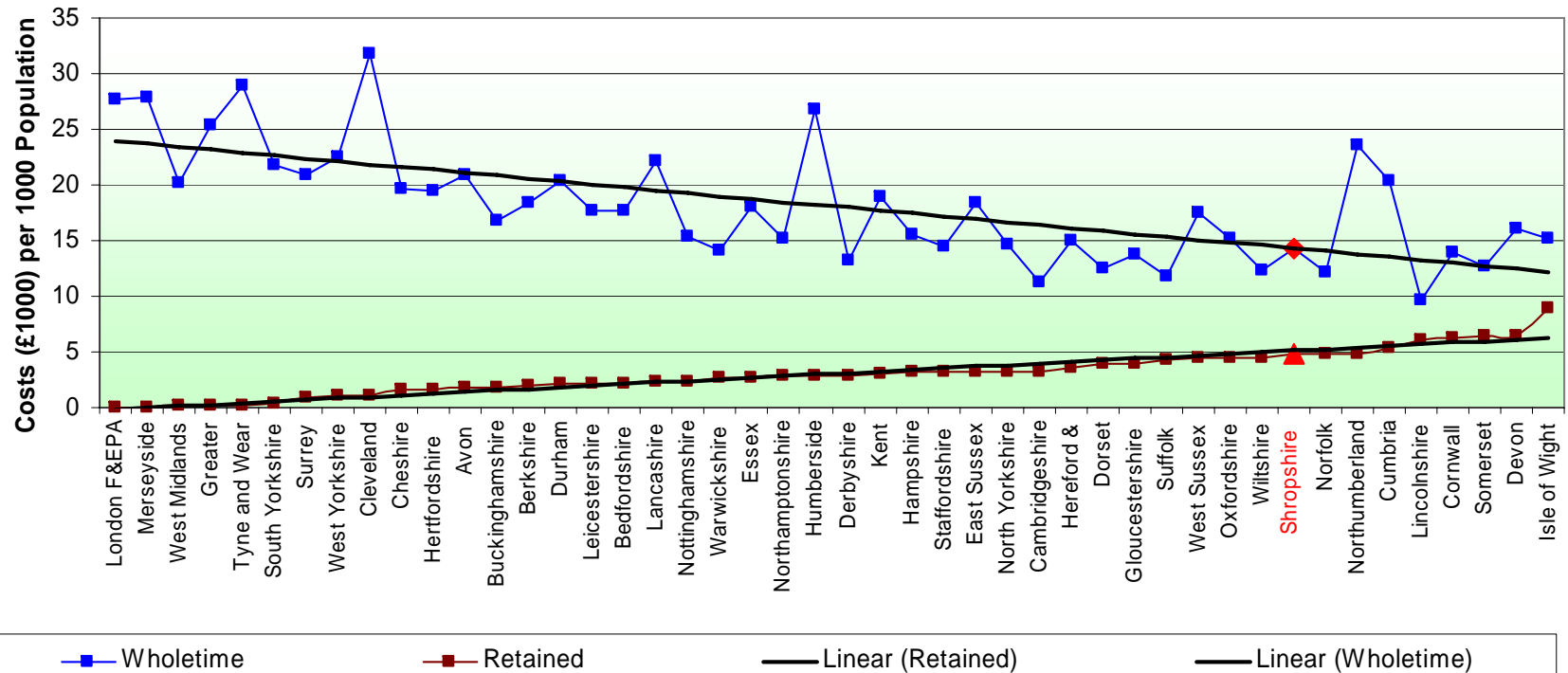
**PUTTING SHROPSHIRE'S  
SAFETY FIRST**





# Employee Costs

## 1. Employees Operational Costs WT & RDS



Correlation -0.6402

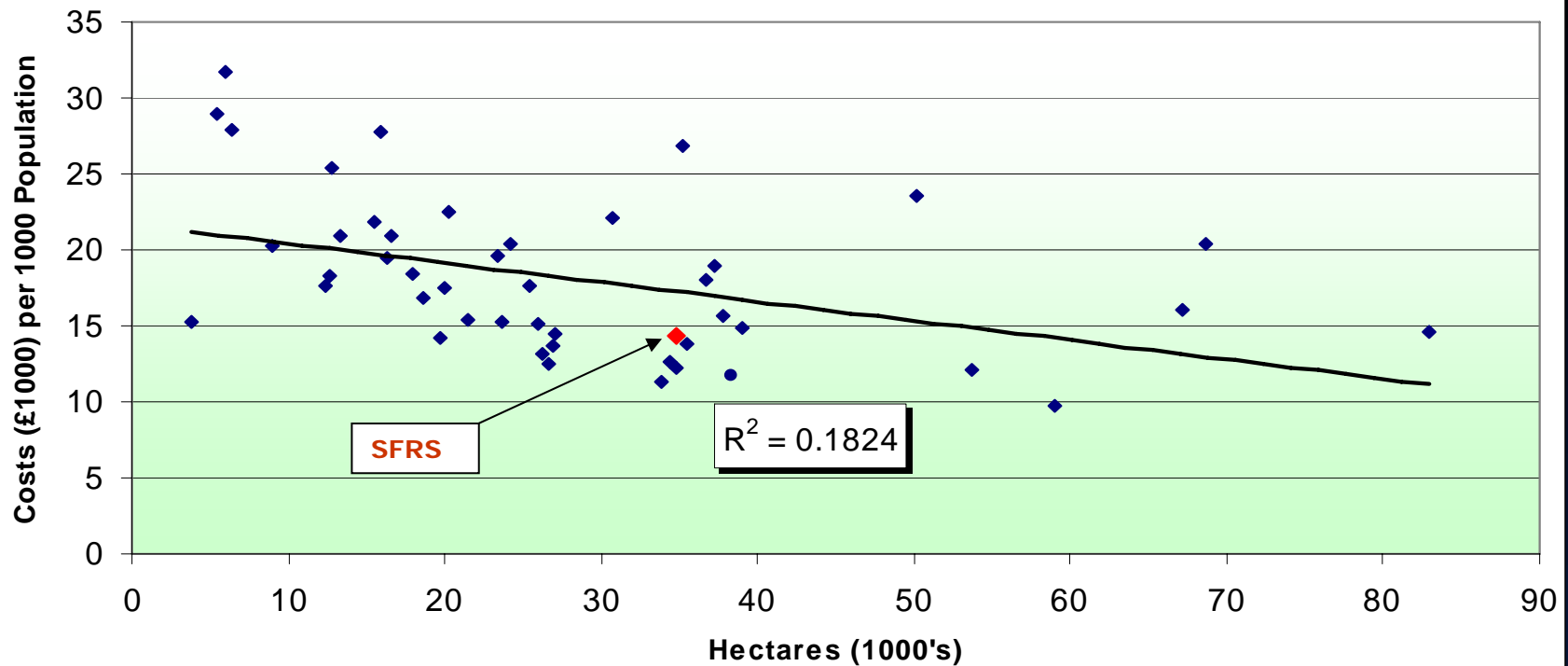
PUTTING SHROPSHIRE'S  
SAFETY FIRST





# Wholetime Employee Costs

## 2. Correlation - Area/Employee Costs (WT) per 1000 Population



SFRS

$R^2 = 0.1824$

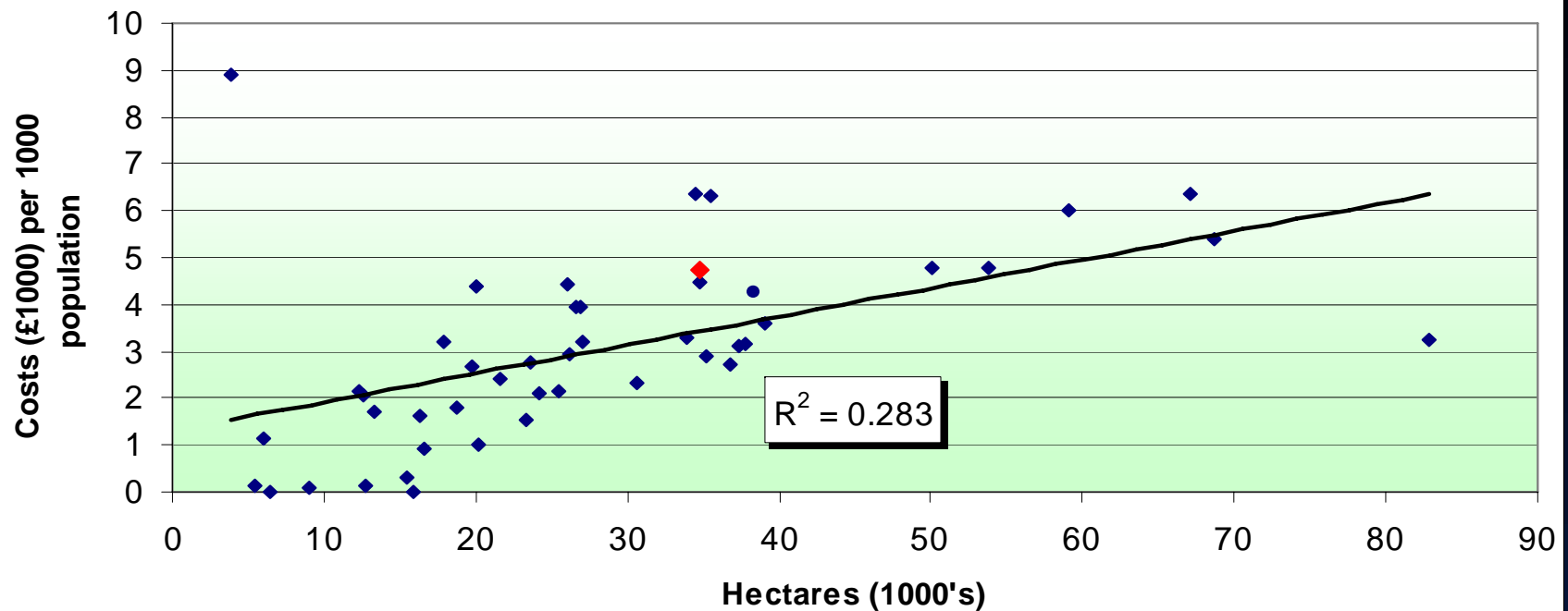
Correlation -0.4270





# Retained Duty System Employee Costs

3. Correlation - Area/Employee Costs (RDS) per 1000 Population



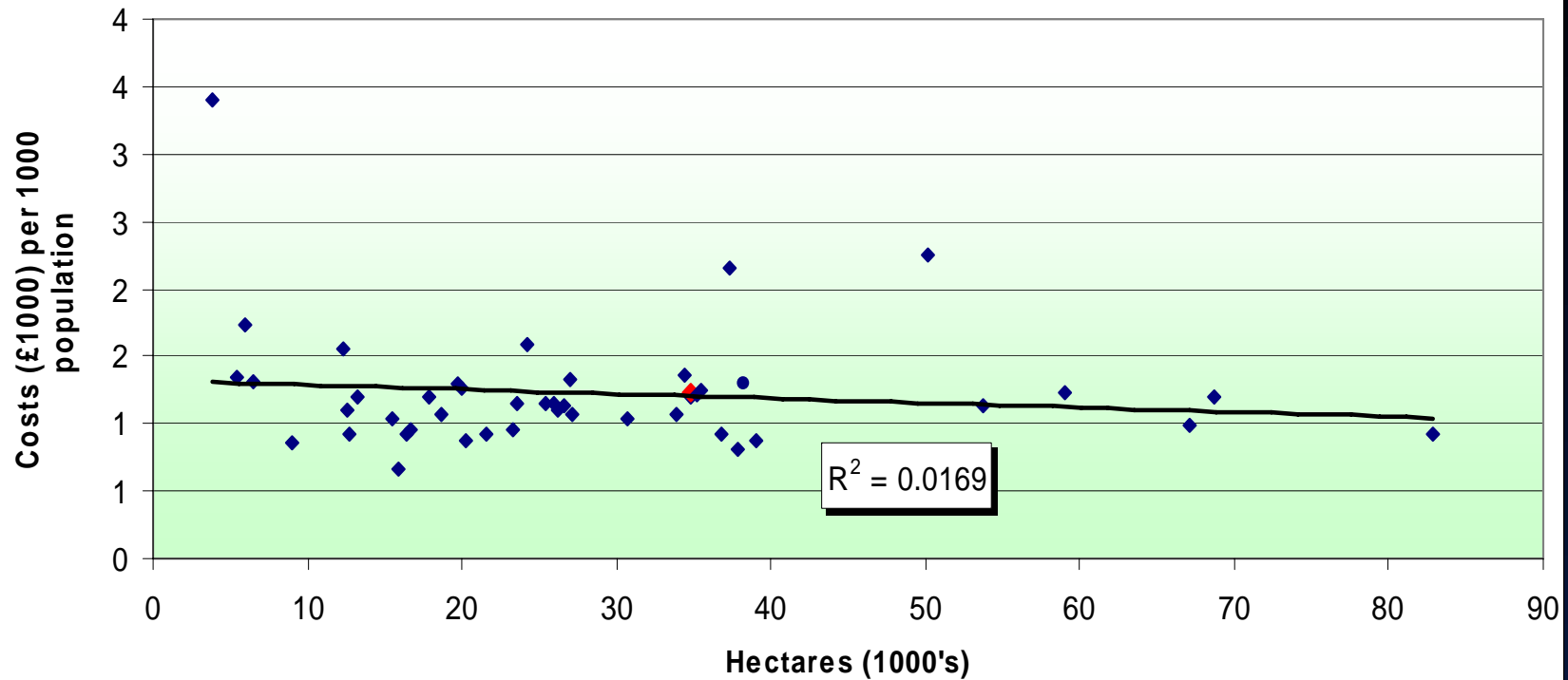
Correlation 0.5319





# Control Room Employee Costs

## 4. Correlation - Area/Employee Costs (Control) per 1000 Population



Correlation -0.1298







# Officers



---

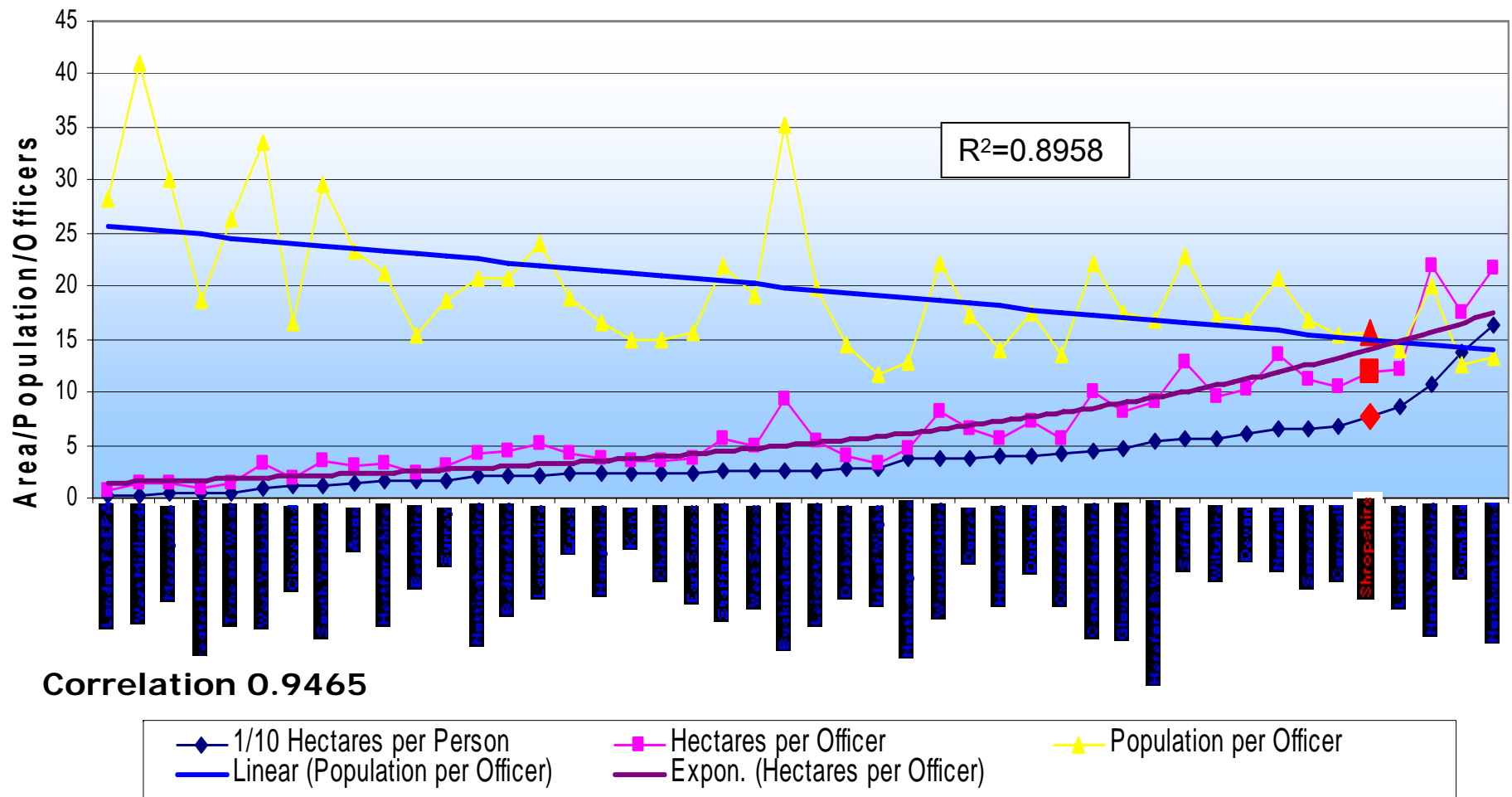
**PUTTING SHROPSHIRE'S  
SAFETY FIRST**





# Population – Area - Officers

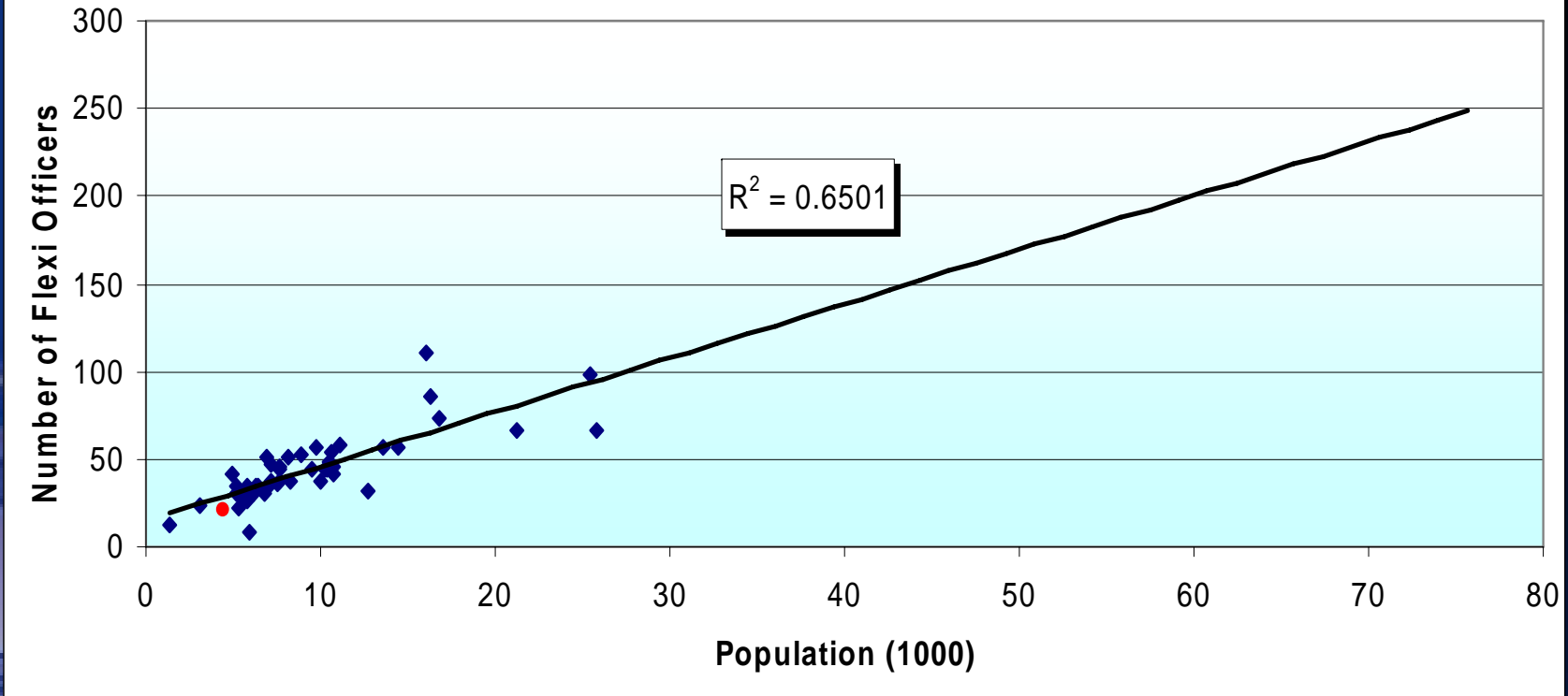
## 5. Relationship between population, area and officers





# Flexible Duty Officers / Population

7. Correlation All Flexi Duty Officer/Population



Correlation 0.8062

BVPI Data Source

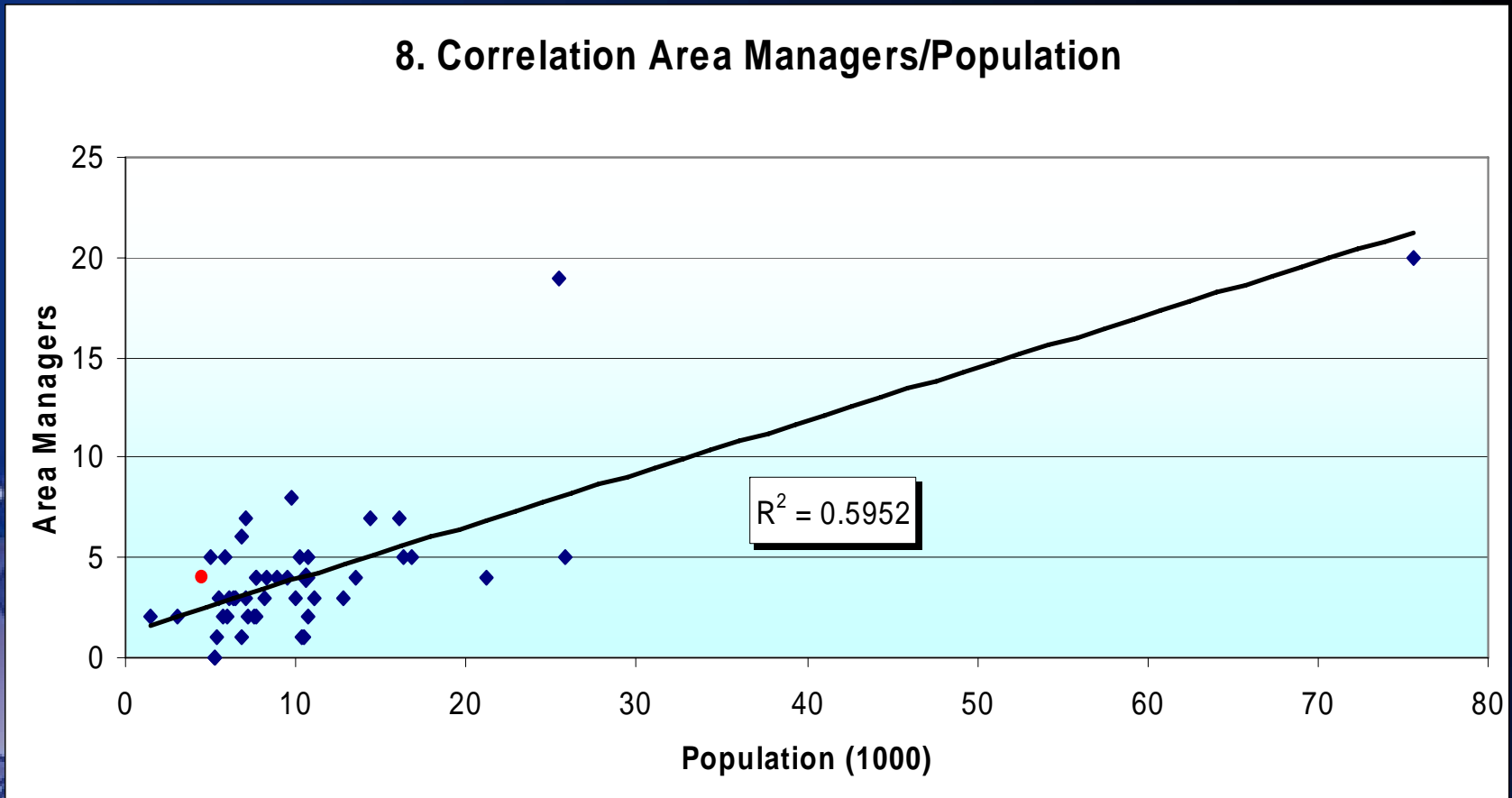
PUTTING SHROPSHIRE'S  
SAFETY FIRST





# Area Managers

8. Correlation Area Managers/Population

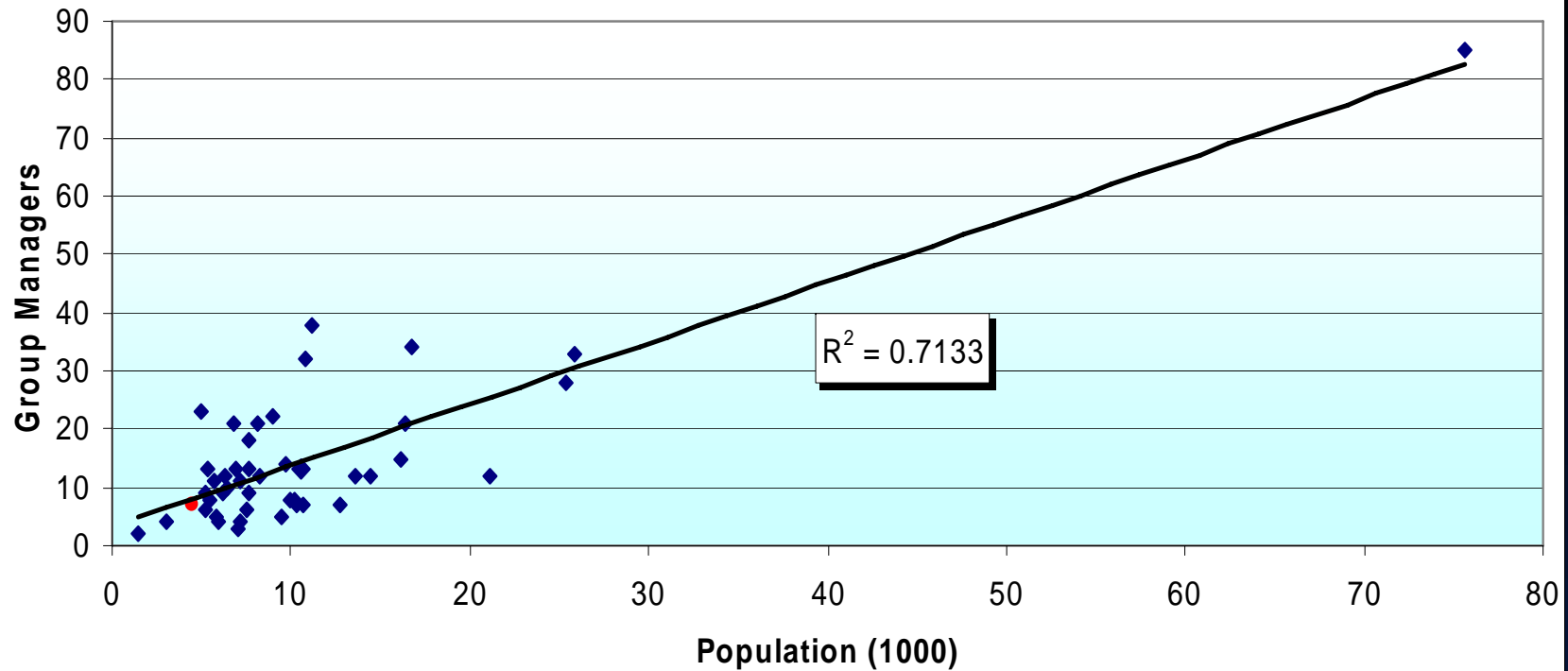


Correlation 0.5883



# Group Managers

## 9. Correlation Group Managers/Population



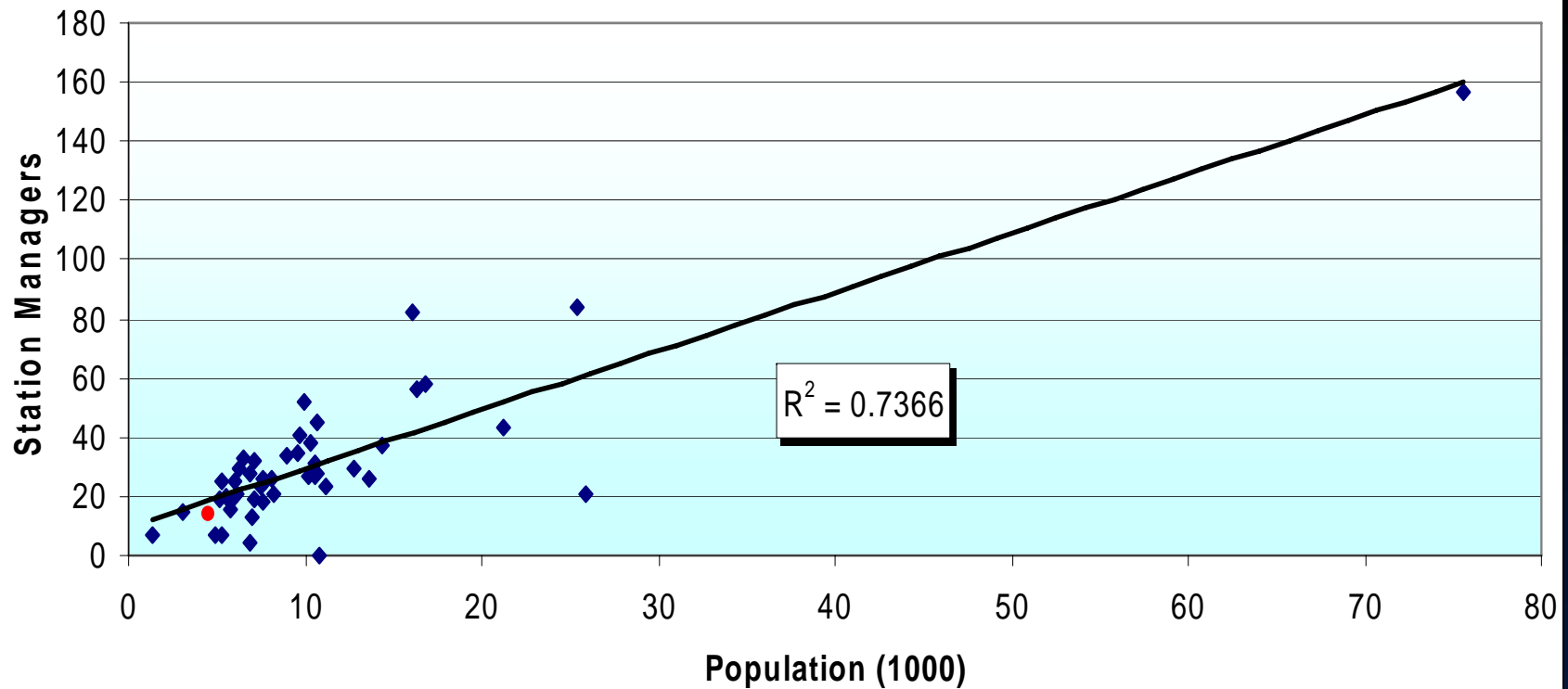
Correlation 0.5472





# Station Managers

10. Correlation Station Managers/Population



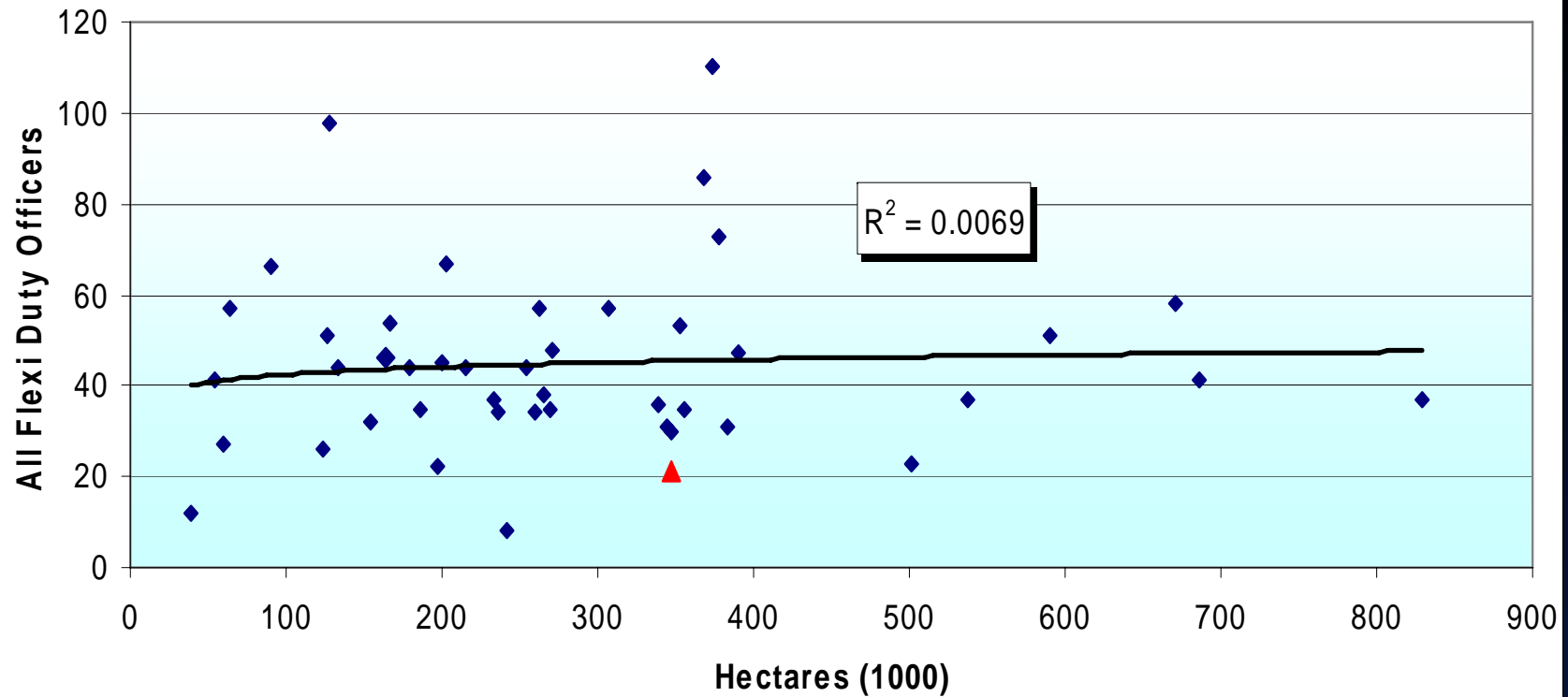
Correlation 0.6495





# Flexible Duty Officers / Area

11. Correlation All Flexi Duty Officers/Area



Correlation 0.0389

BVPI Data Source

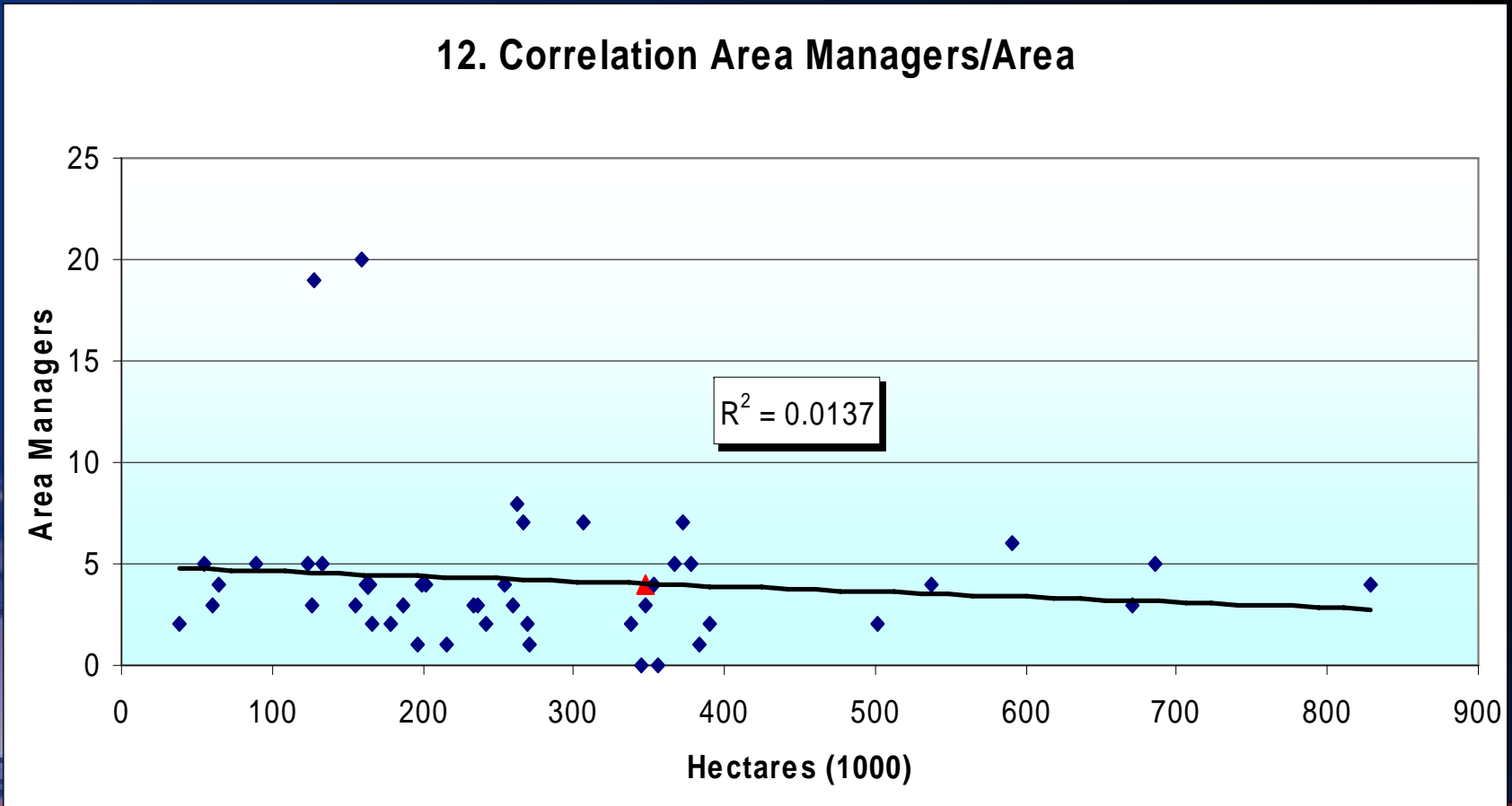
PUTTING SHROPSHIRE'S  
SAFETY FIRST





# Area Managers

12. Correlation Area Managers/Area



Correlation 0.1170

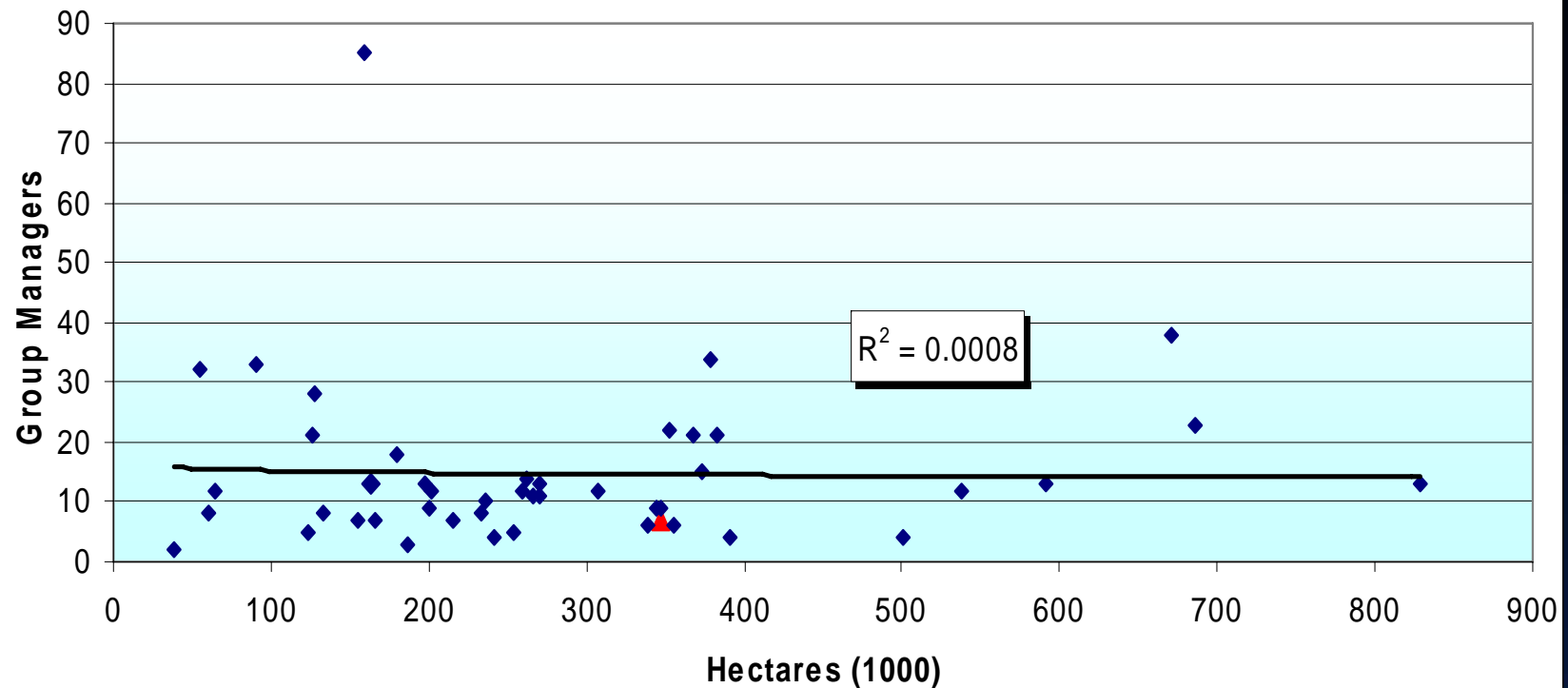






# Group Managers

## 13. Correlation Group Managers/Area



Correlation 0.0196

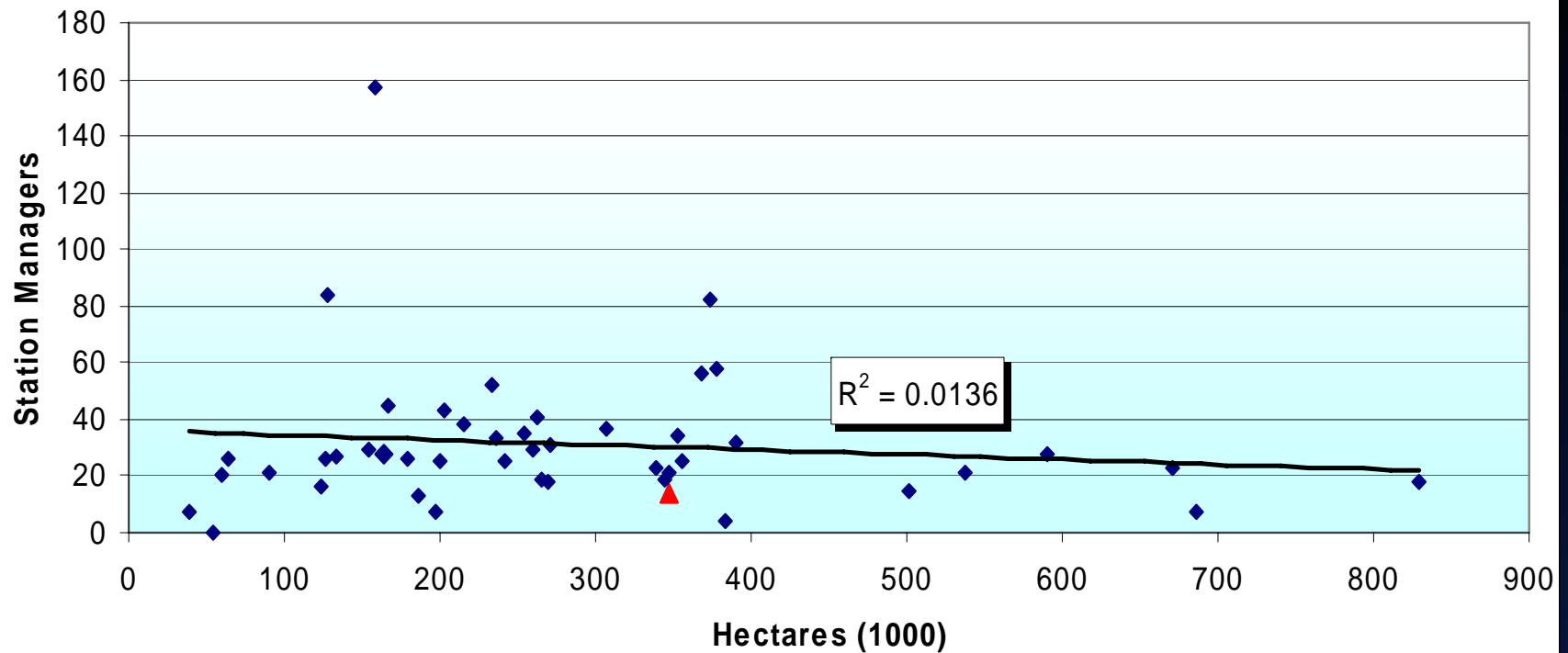
PUTTING SHROPSHIRE'S  
SAFETY FIRST





# Station Managers

## 14. Correlation Station Managers/Area



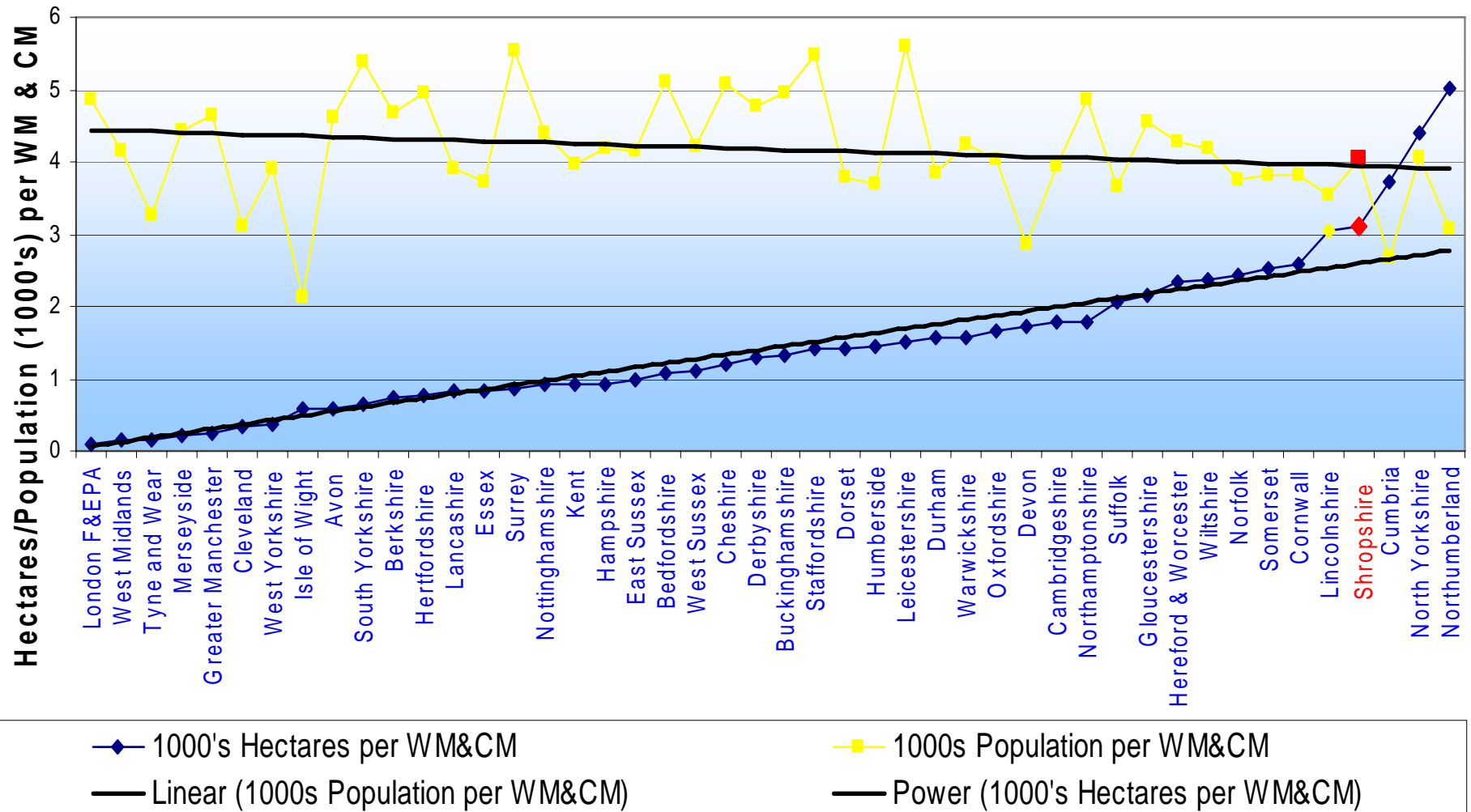
Correlation -0.0167





# Watch and Crew Managers

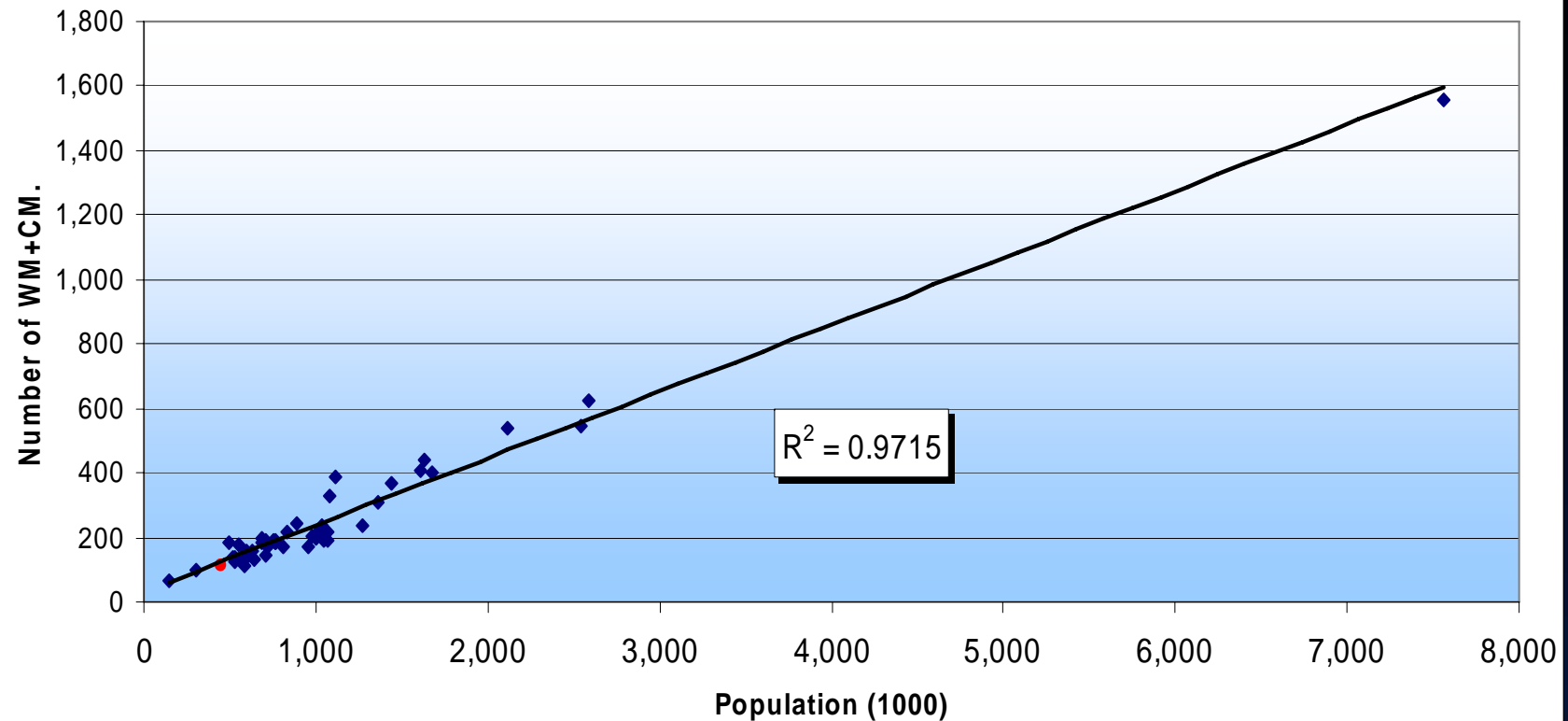
## 15. Area/Population per Watch&Crew Manager





# Watch and Crew Managers / Population

16. Correlation WM+CM./Population



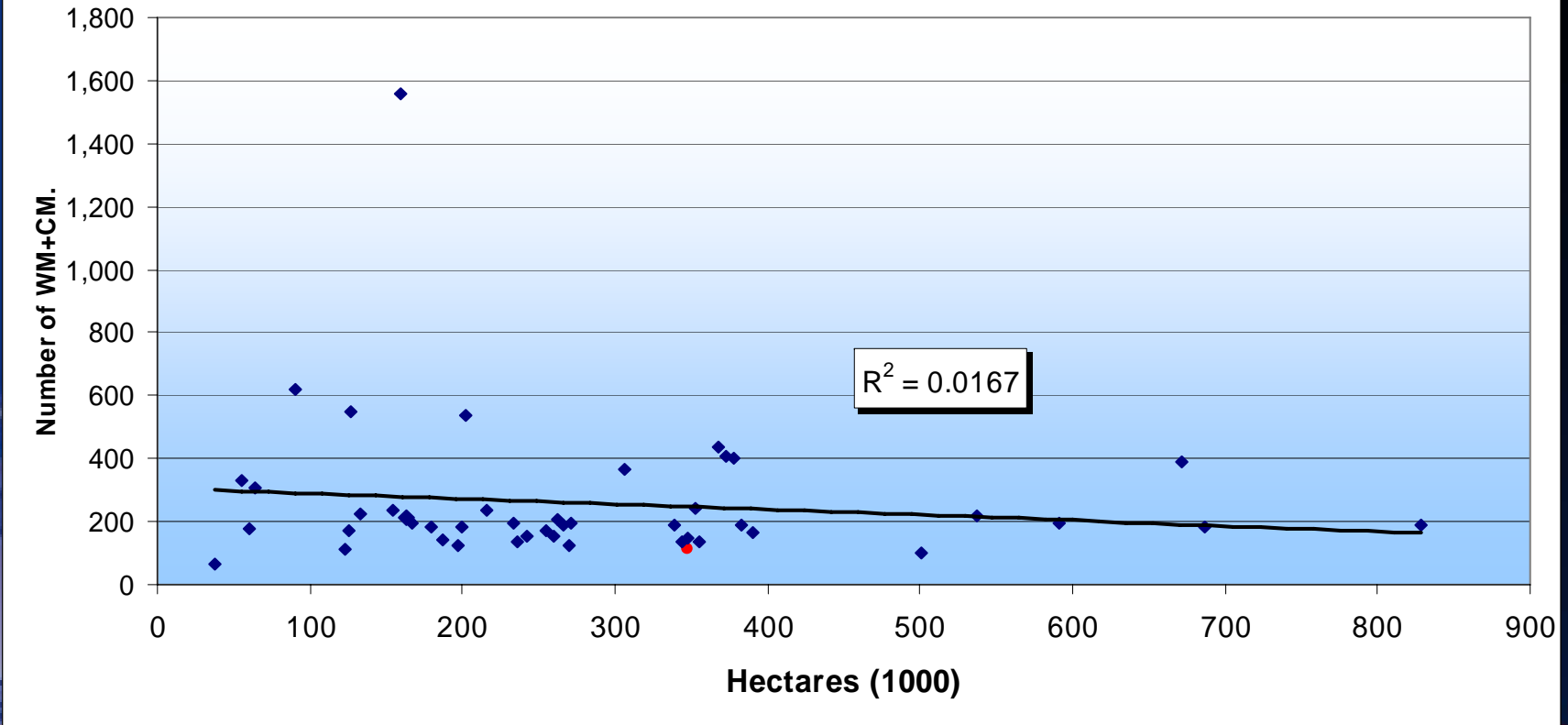
Correlation 0.9856





# Watch and Crew Managers / Area

17. Correlation WM+CM/Area



Correlation 0.0129





# Firefighters



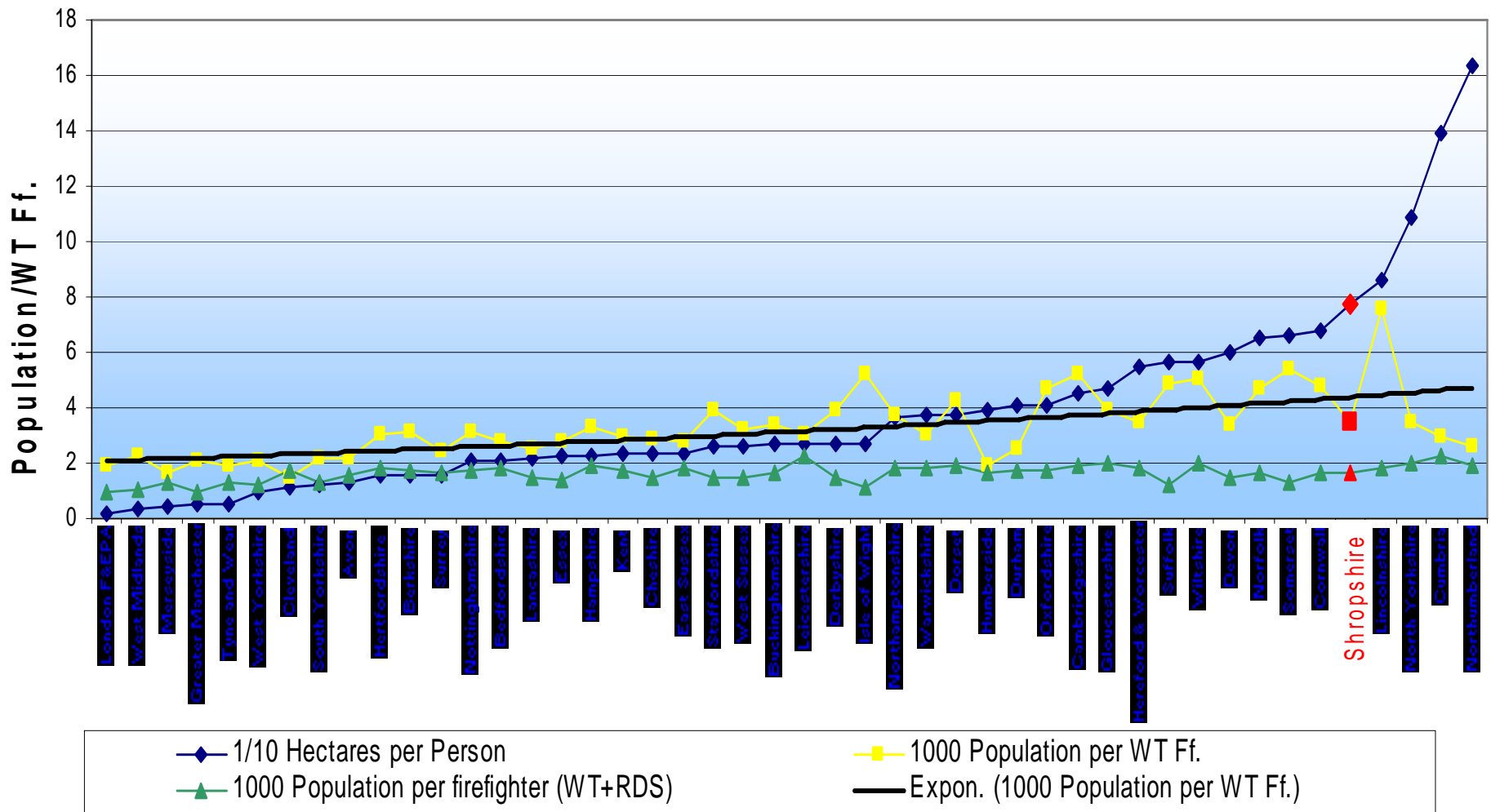
**PUTTING SHROPSHIRE'S  
SAFETY FIRST**





# Firefighters

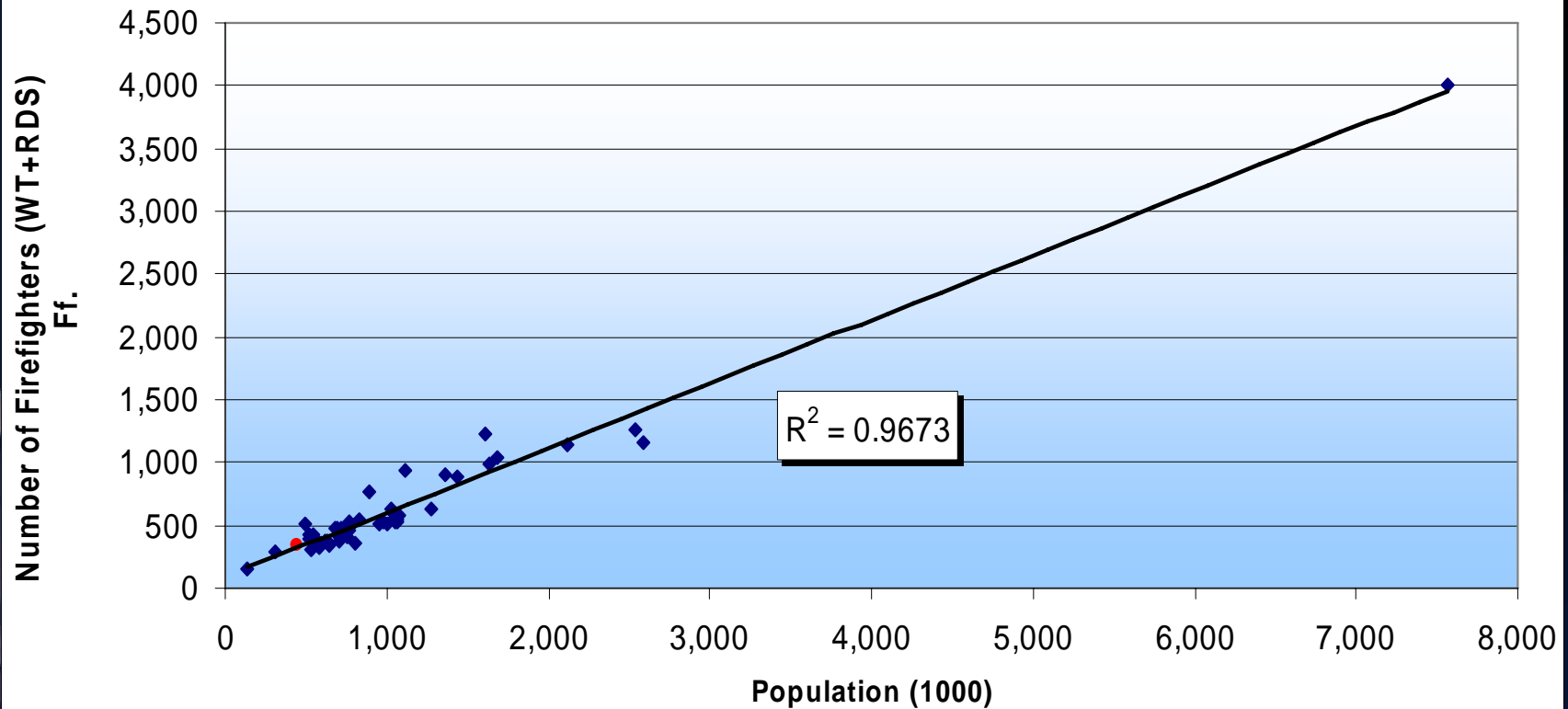
18. Relationship between population, area and Ff.





# Firefighters / Population

19. Correlation Firefighters./Population



Correlation 0.9835

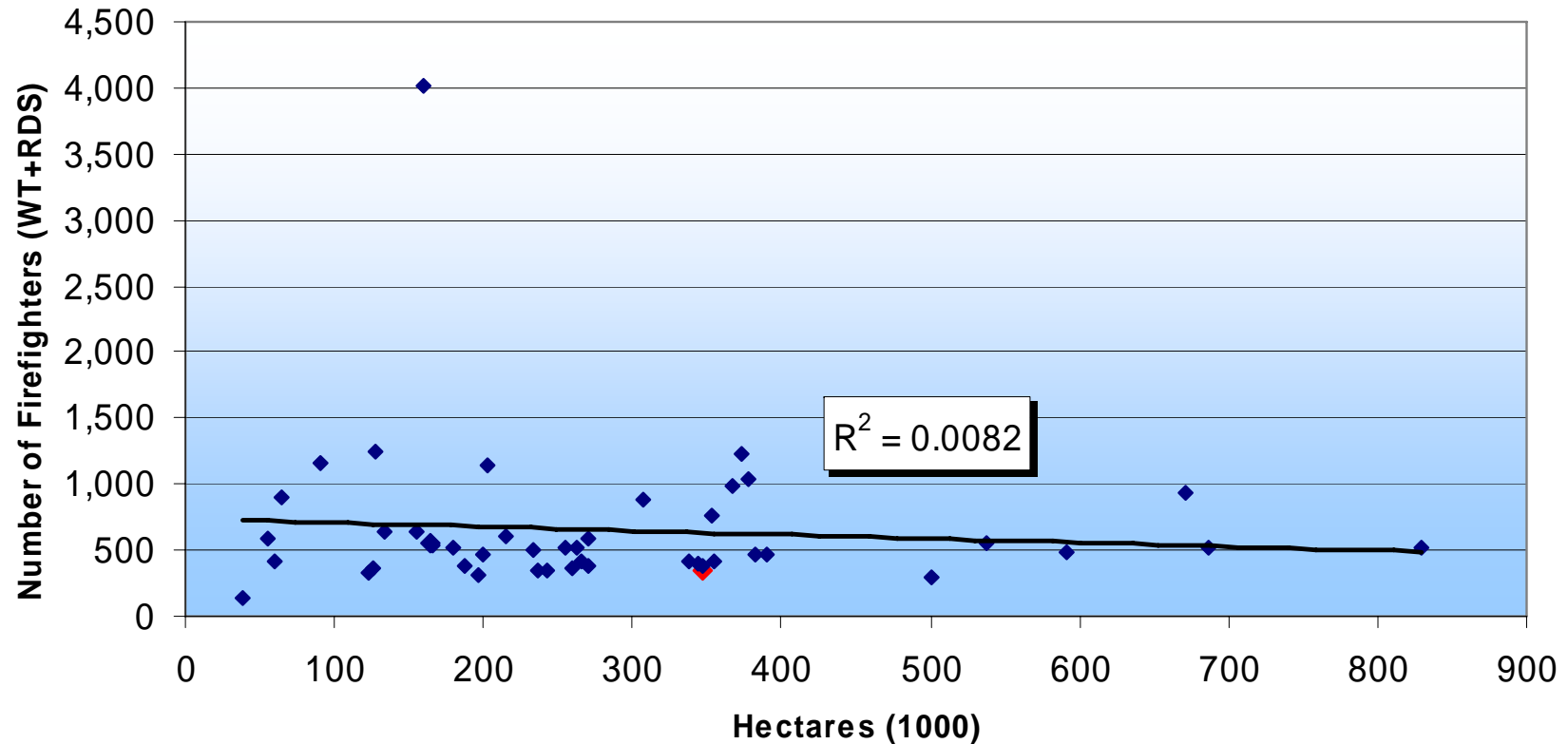






# Firefighters / Area

20. Correlation Firefighters./Area



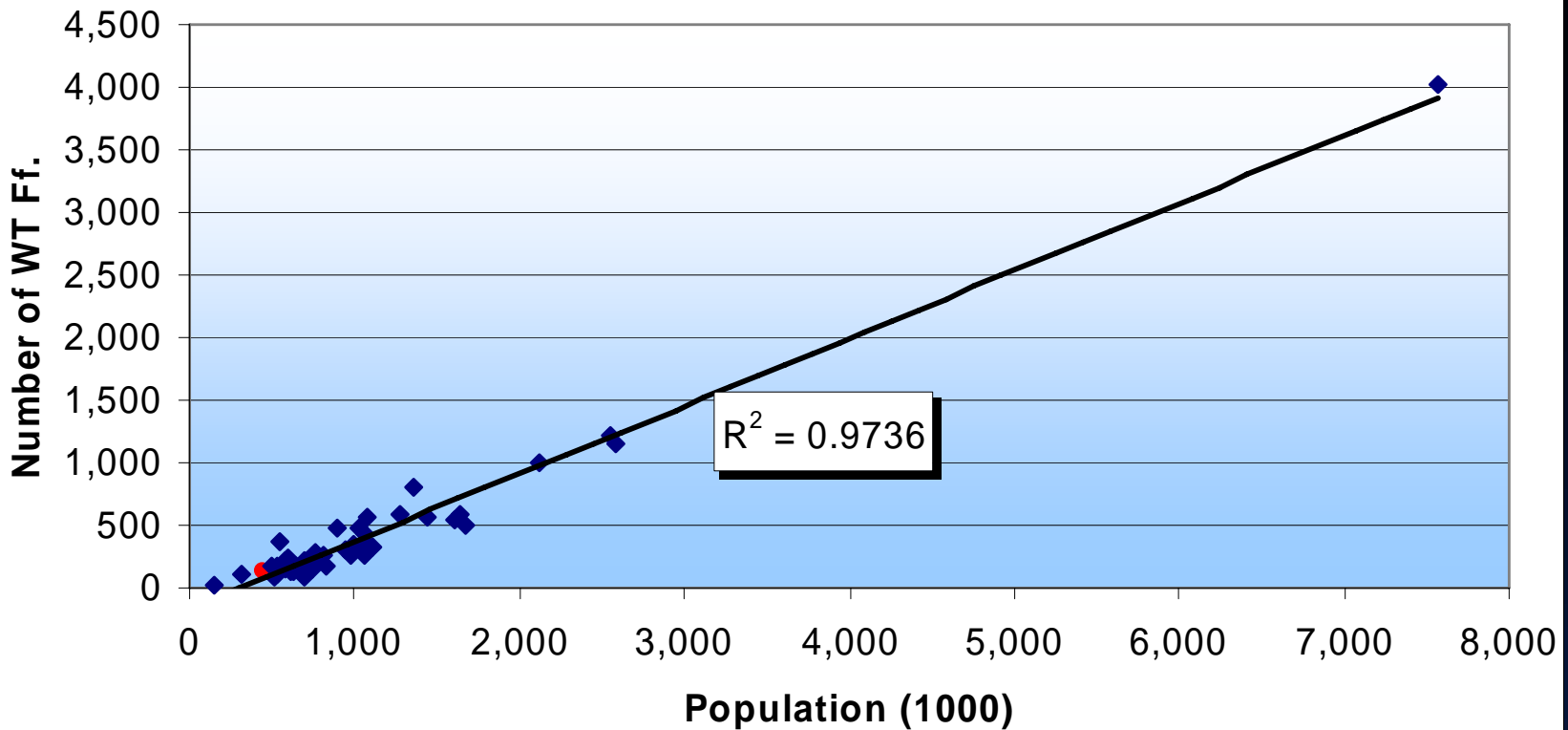
Correlation -0.0907





# Wholetime Firefighters / Population

21. Correlation WT Ff./Population



Correlation 0.9867

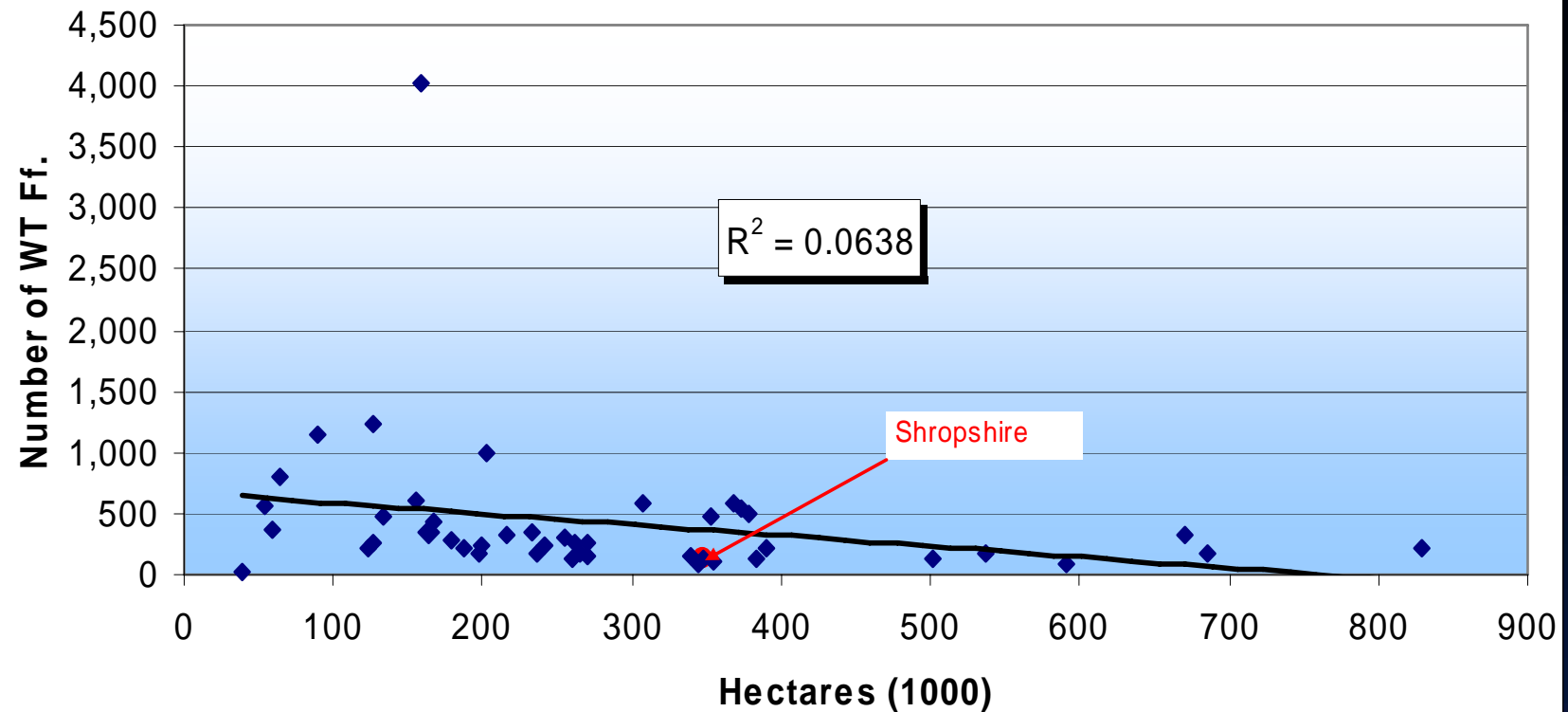
PUTTING SHROPSHIRE'S  
SAFETY FIRST





# Wholetime Firefighters / Area

## 22. Correlation WT Ff.Area



Correlation -0.2525

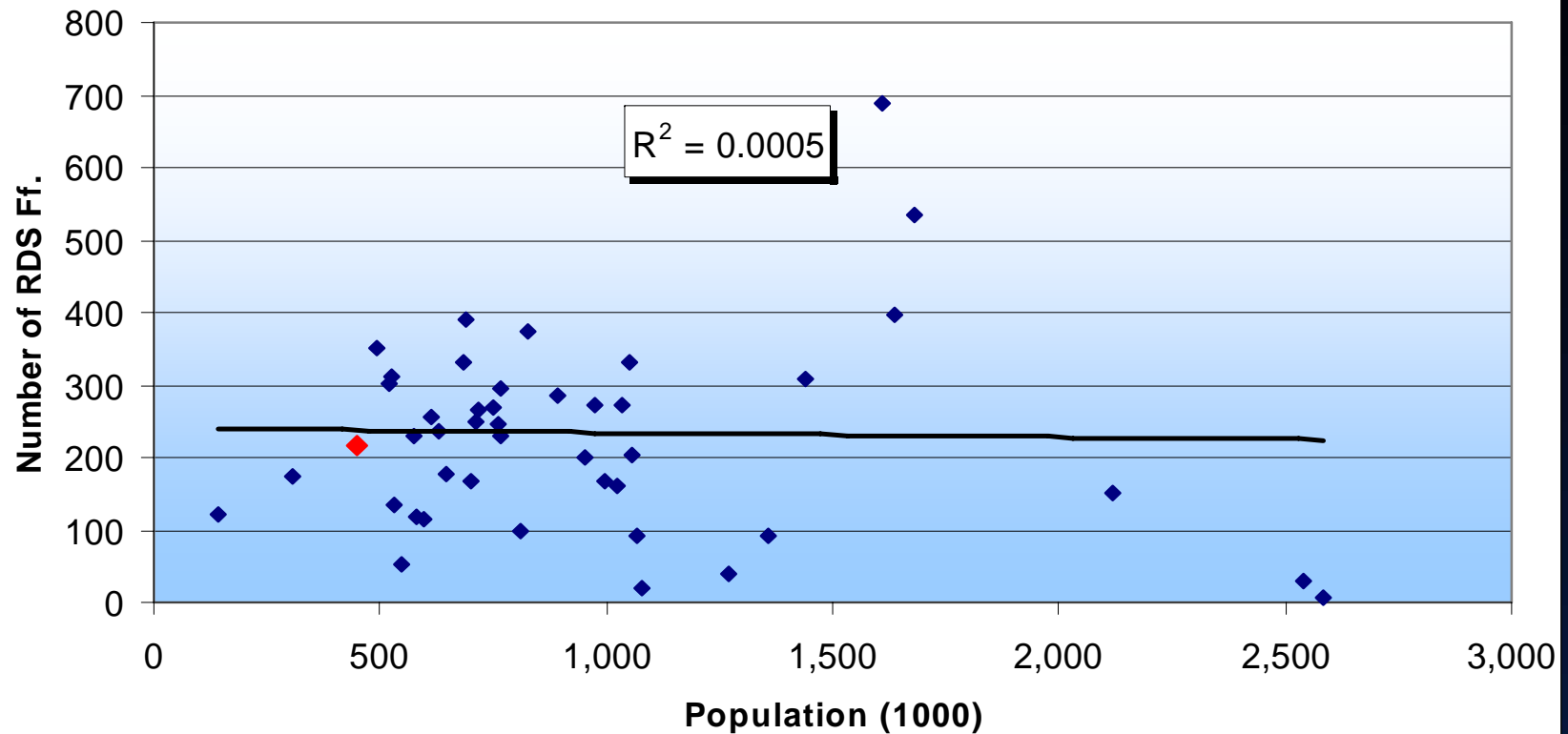
PUTTING SHROPSHIRE'S  
SAFETY FIRST





# Retained Duty System Firefighters / Population

23. Correlation RDS Ff./Population



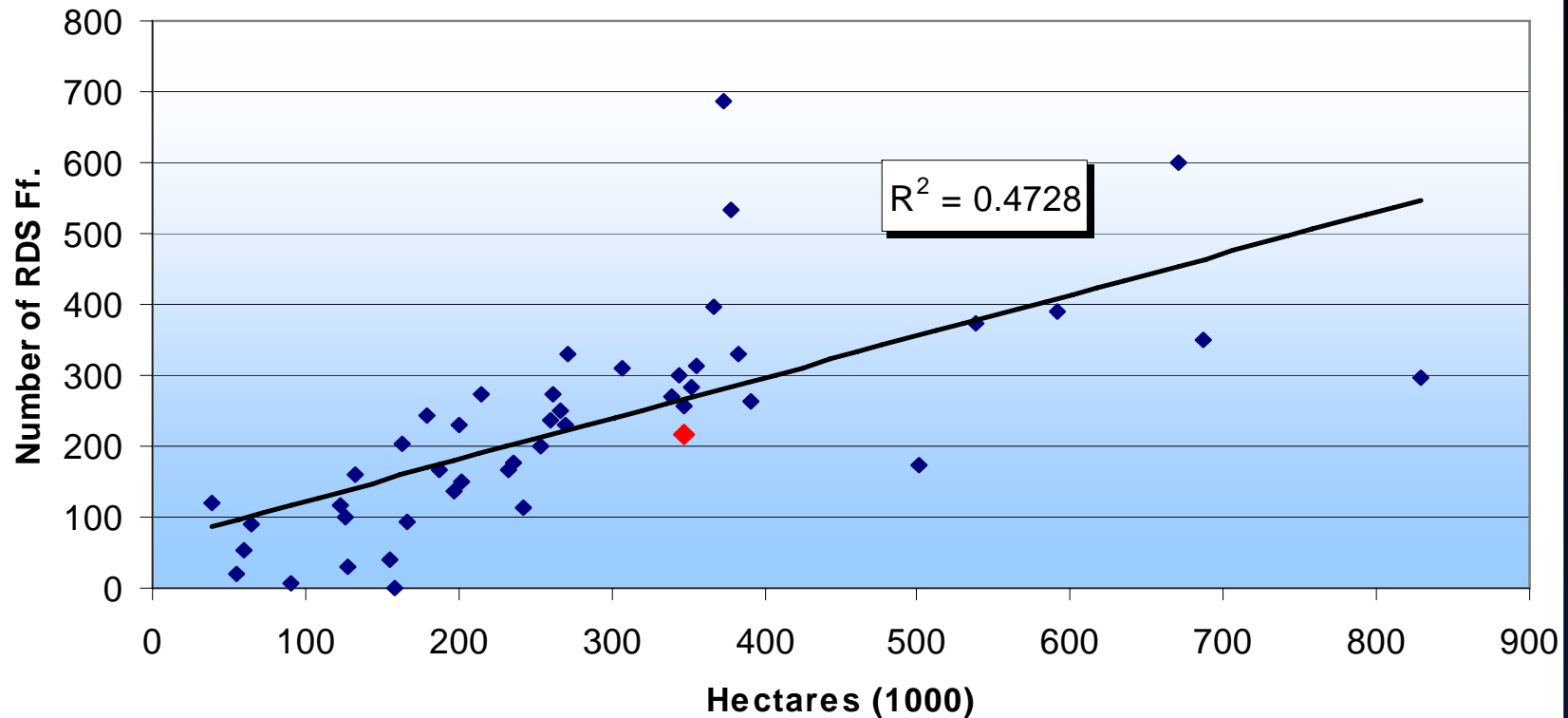
Correlation -0.2192





# Retained Duty System Firefighters / Area

24. Correlation RDS Ff./Area



Correlation 0.6876

PUTTING SHROPSHIRE'S  
SAFETY FIRST





# Fire Stations



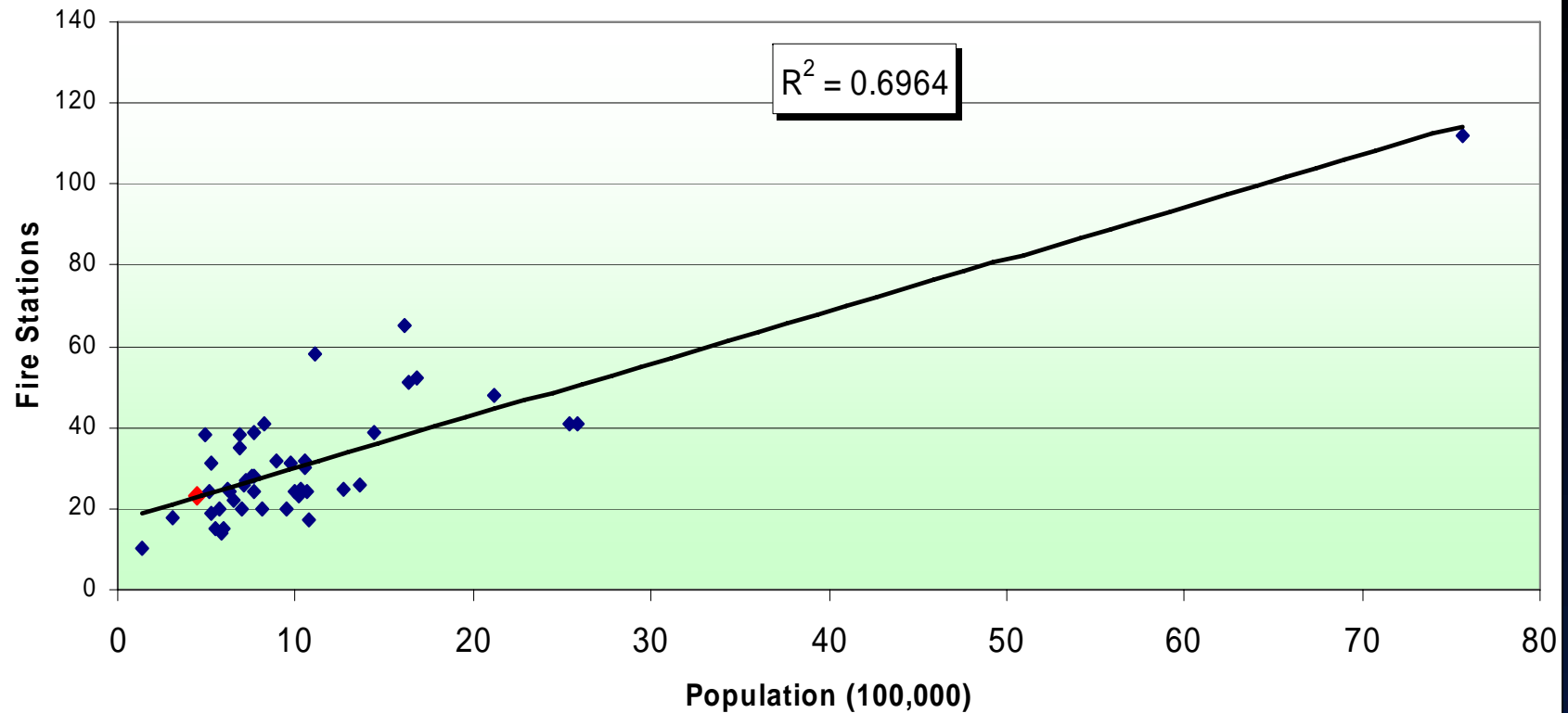
**PUTTING SHROPSHIRE'S  
SAFETY FIRST**





# Fire Stations / Population

25. Correlation Population/Fire Stns



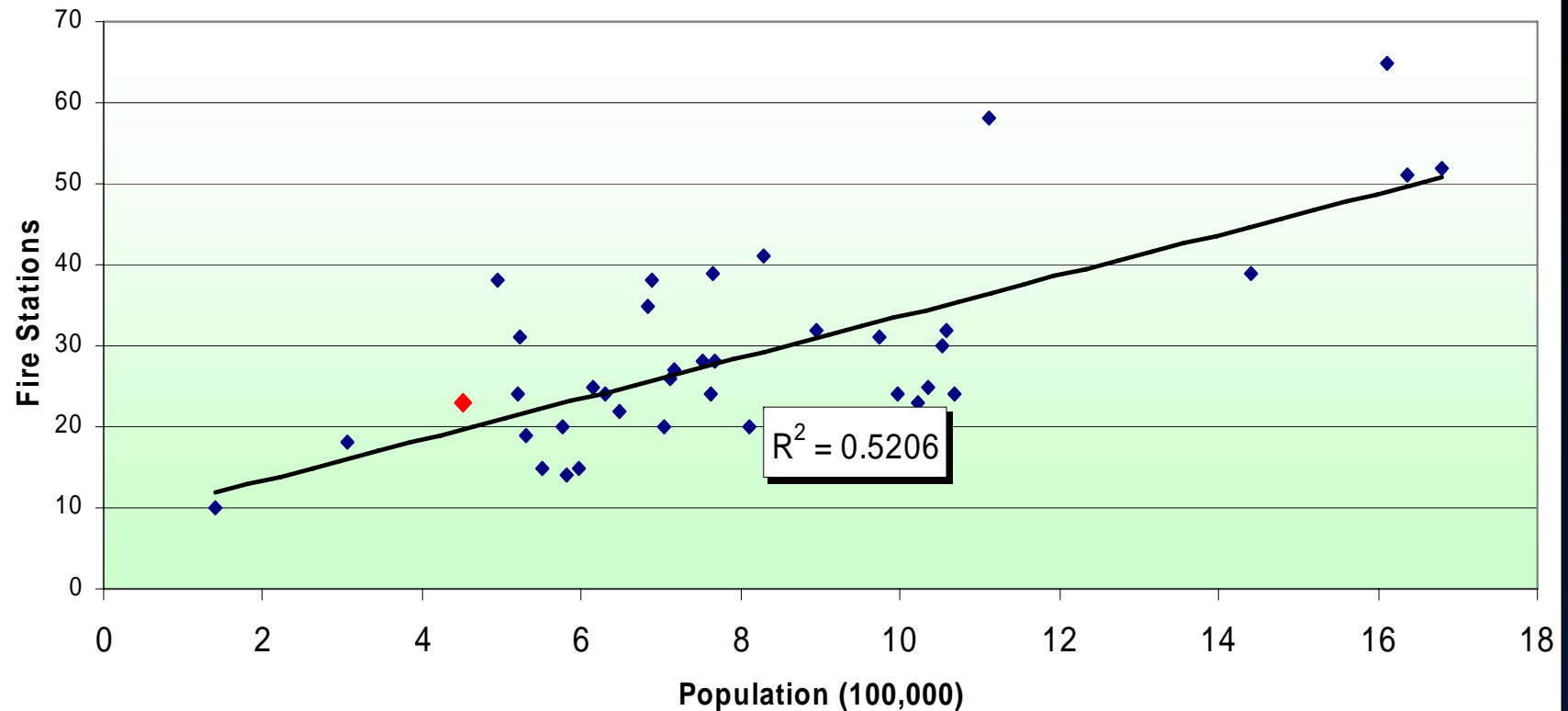
Correlation 0.8345





# Fire Stations (Ex Mets) / Population

25 (a). Correlation Population/Fire Stns (Ex Mets)



Correlation 0.7215

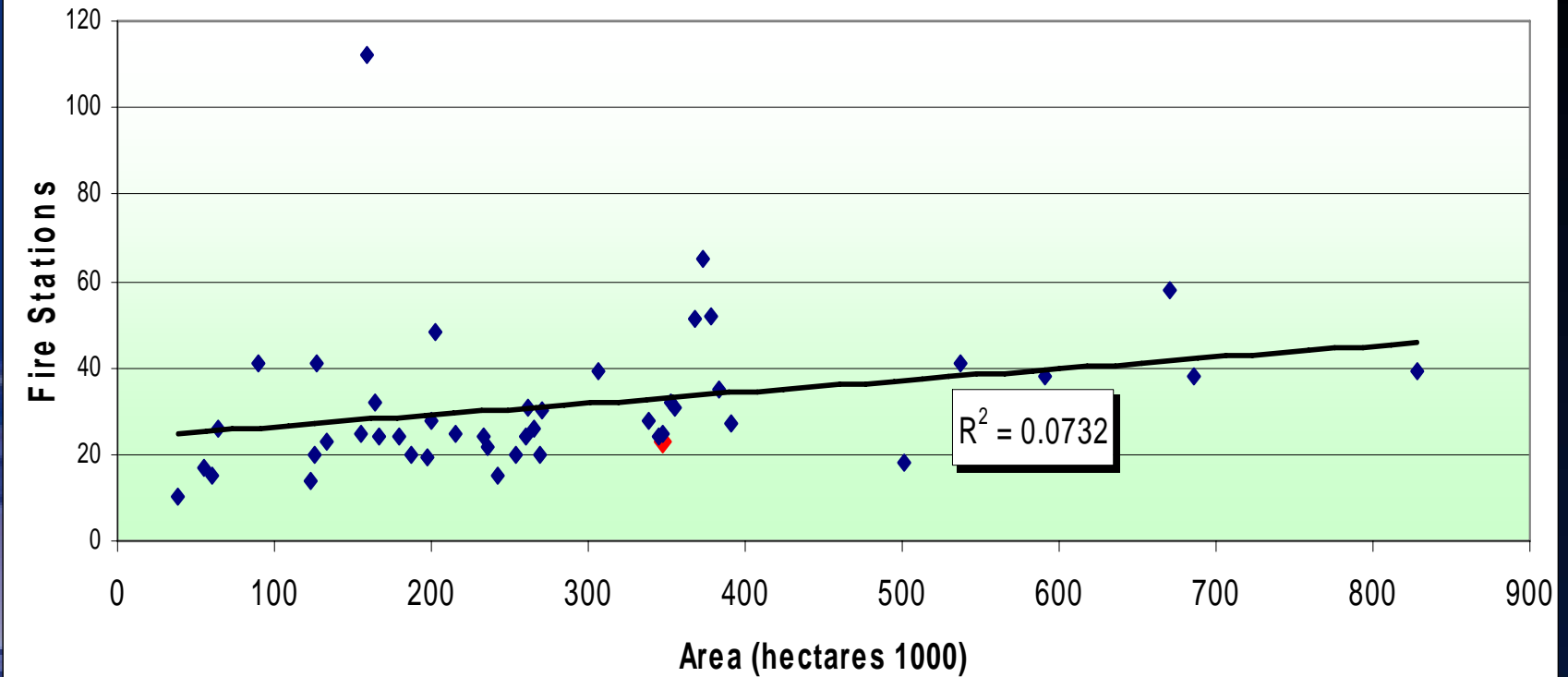






# Fire Stations / Area

26. Correlation Area/Fire Stns



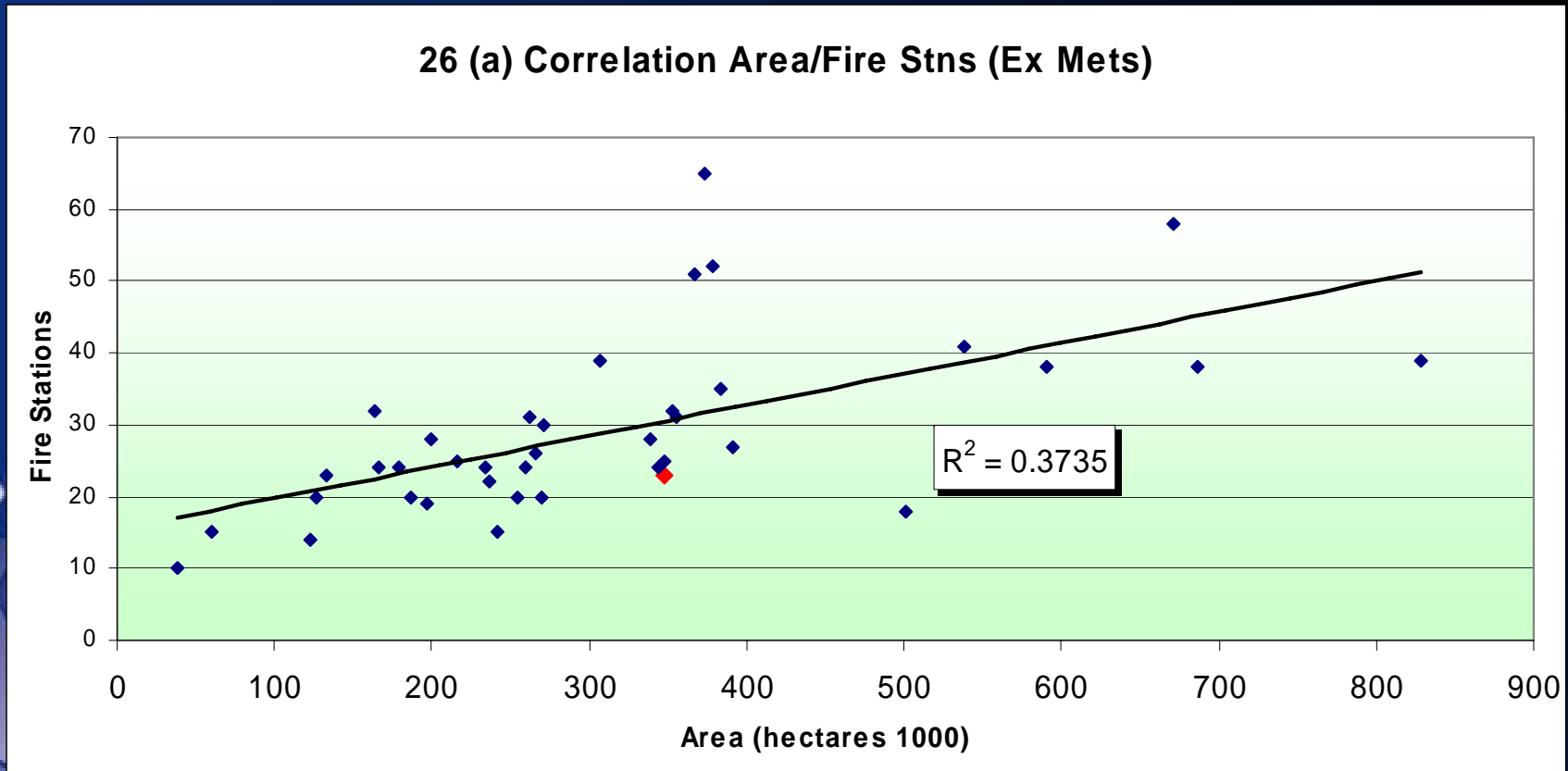
Correlation 0.2706





# Fire Stations (Ex Mets) / Area

26 (a) Correlation Area/Fire Stns (Ex Mets)



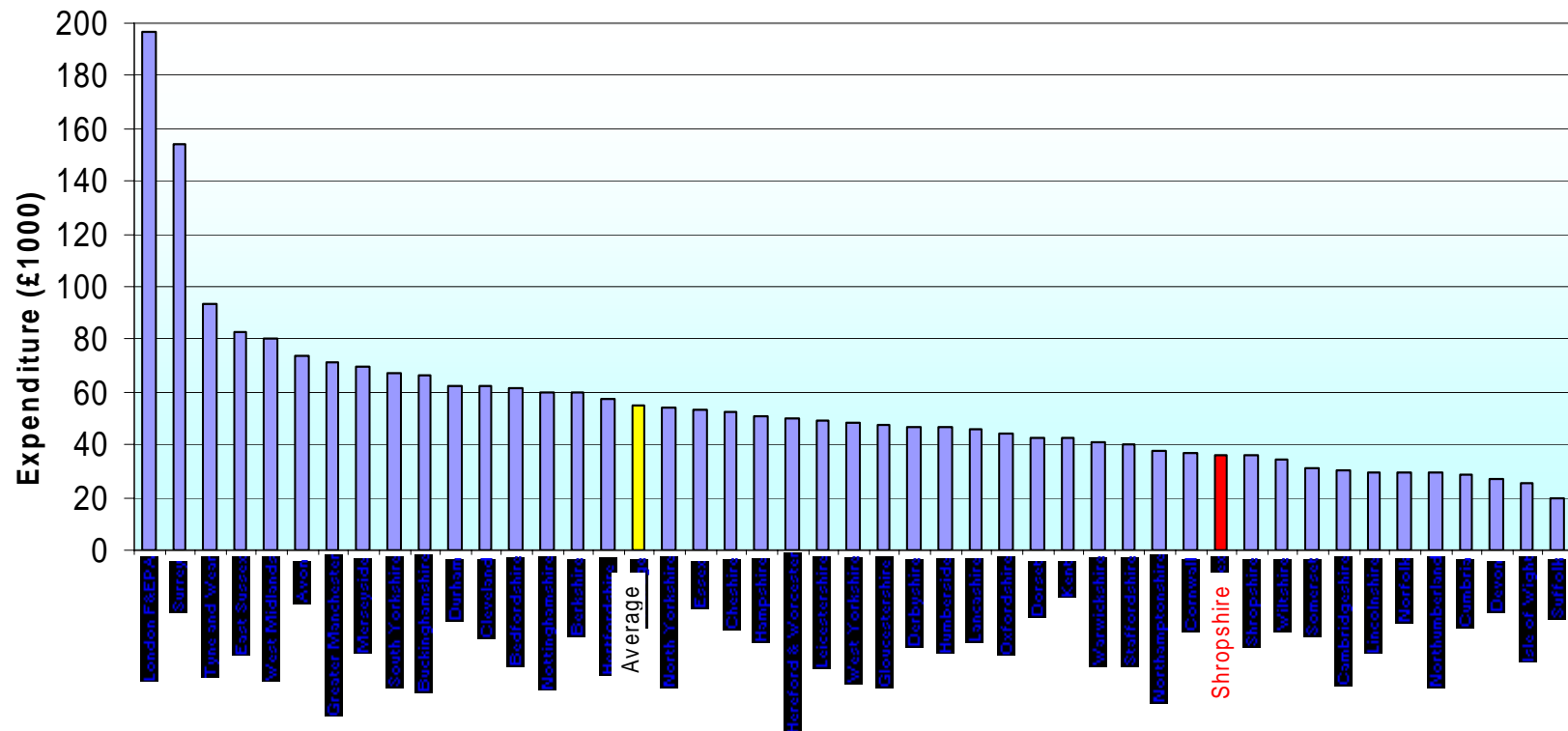
Correlation 0.6112





# Premises Expenditure / Fire Stations

27. Premises Expenditure/Stn





# Pumps



---

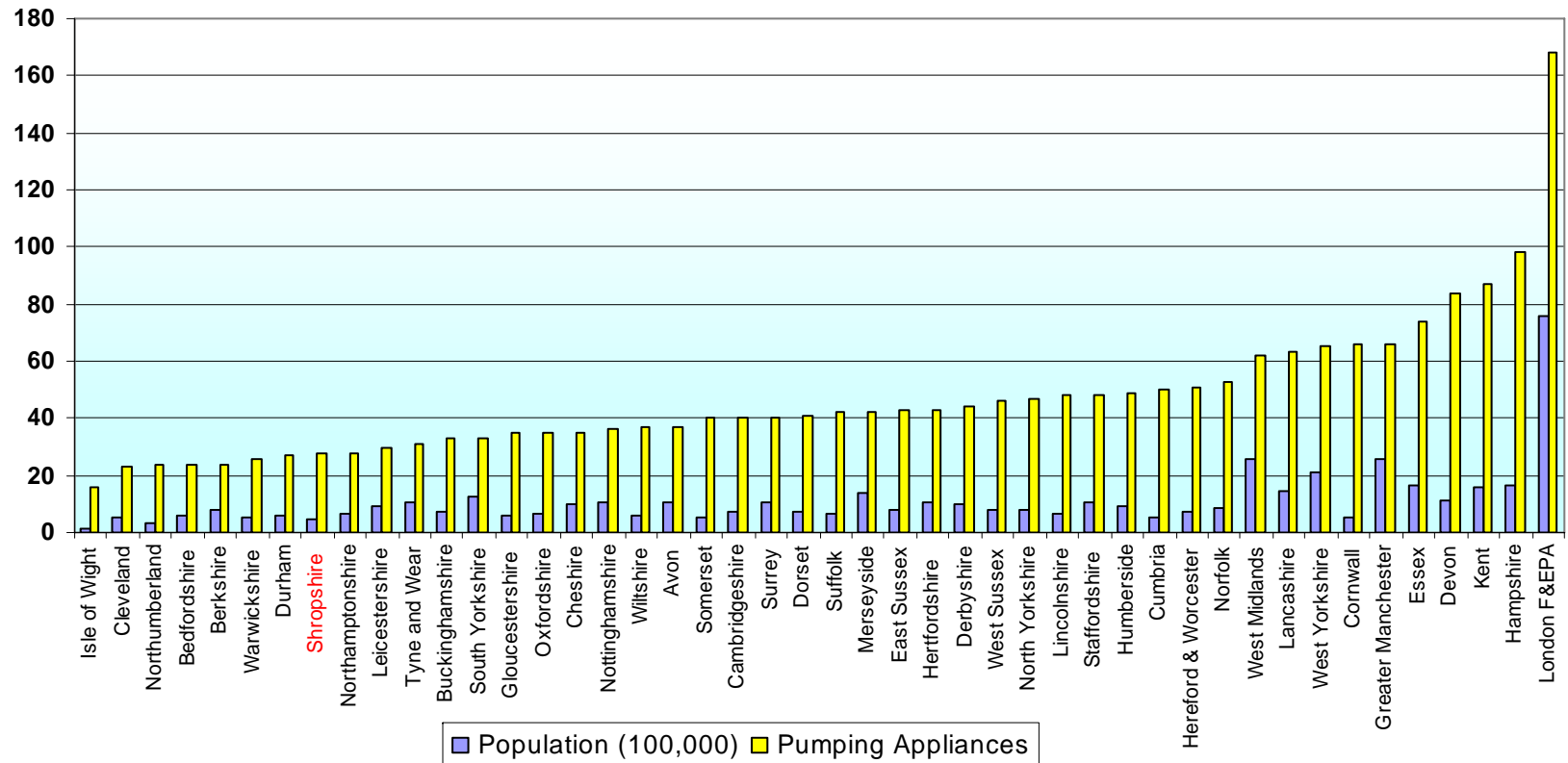
**PUTTING SHROPSHIRE'S  
SAFETY FIRST**





# Pumps / Population

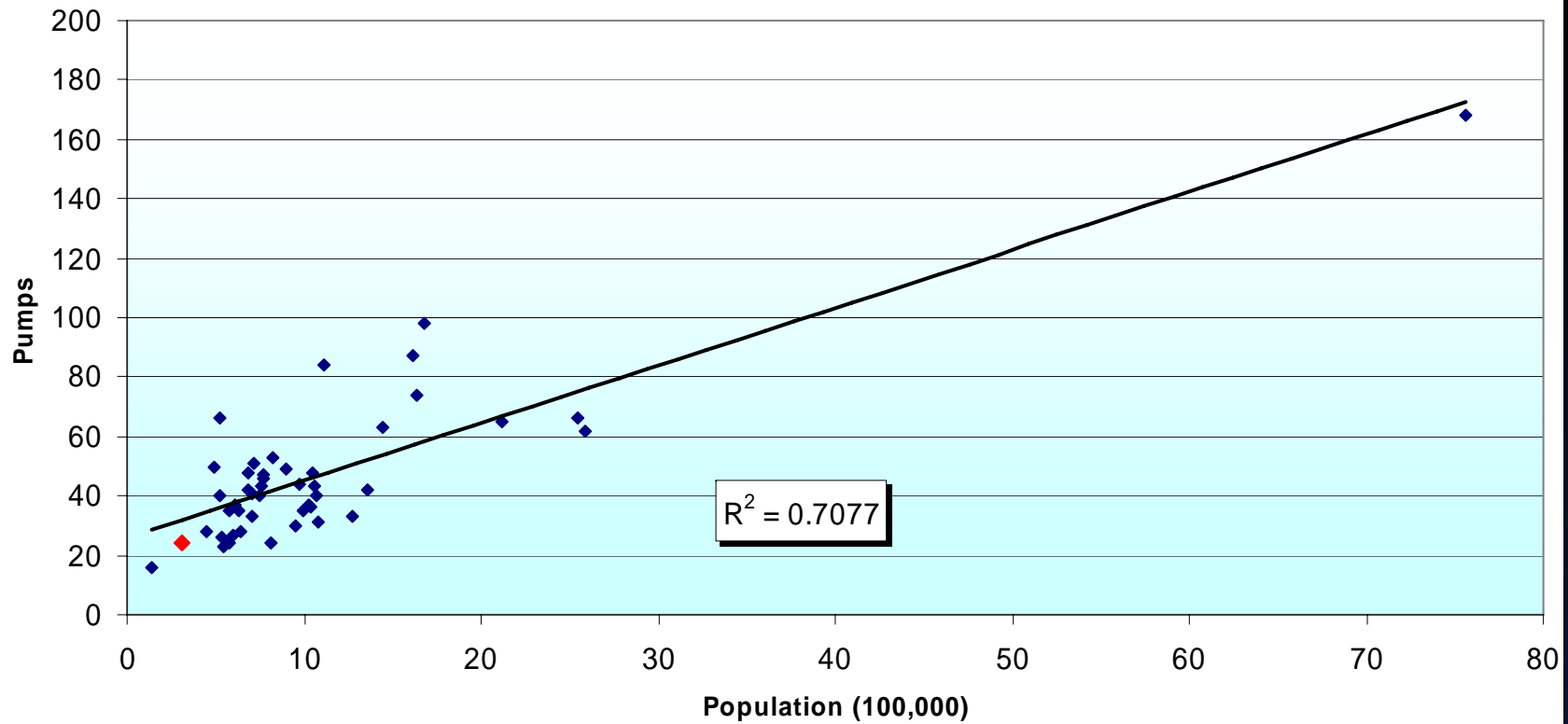
28. Population[100,000]/Pumps





# Population / Pumps

29. Correlation Population/Pumps



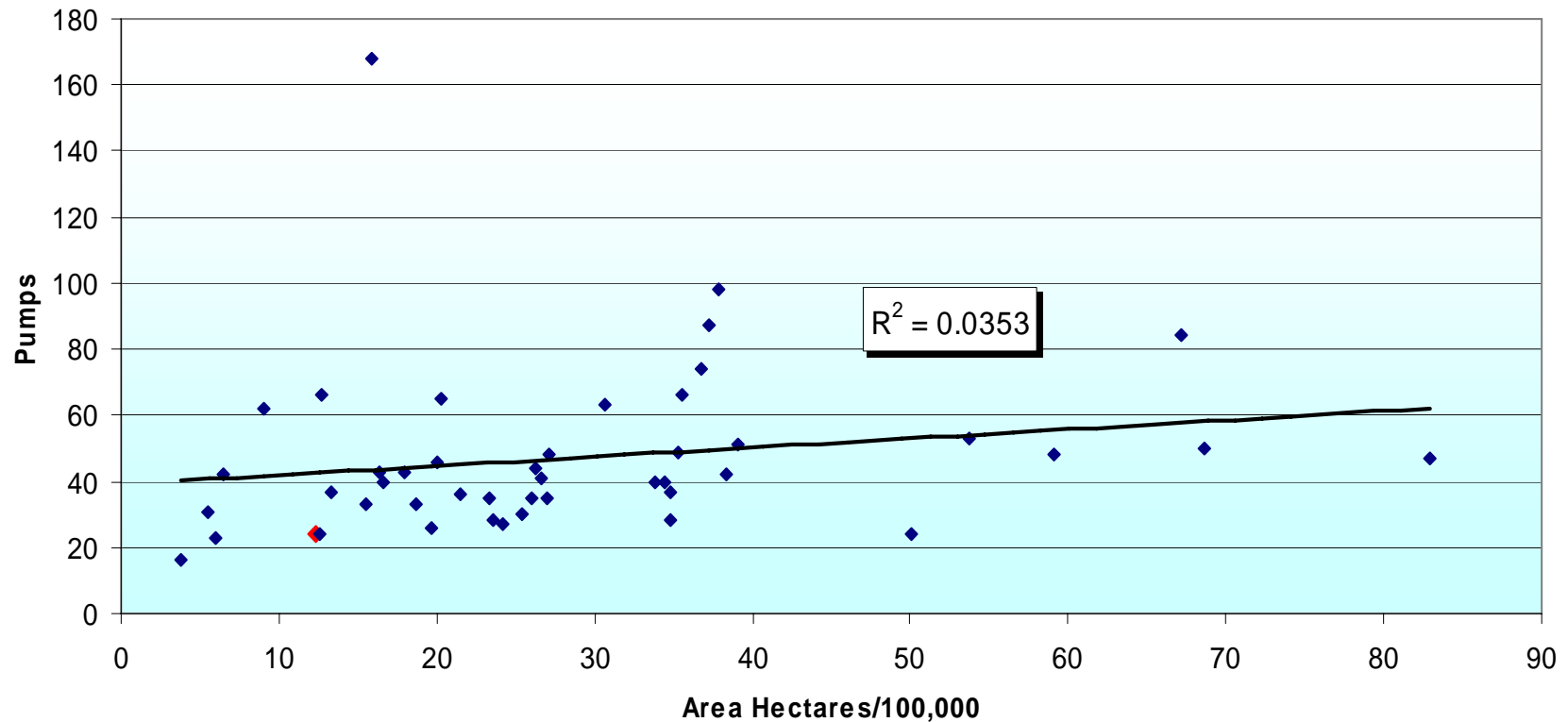
Correlation 0.8413





# Fire and Rescue Authority Area / Pumps

30. Correlation Area/Pumps



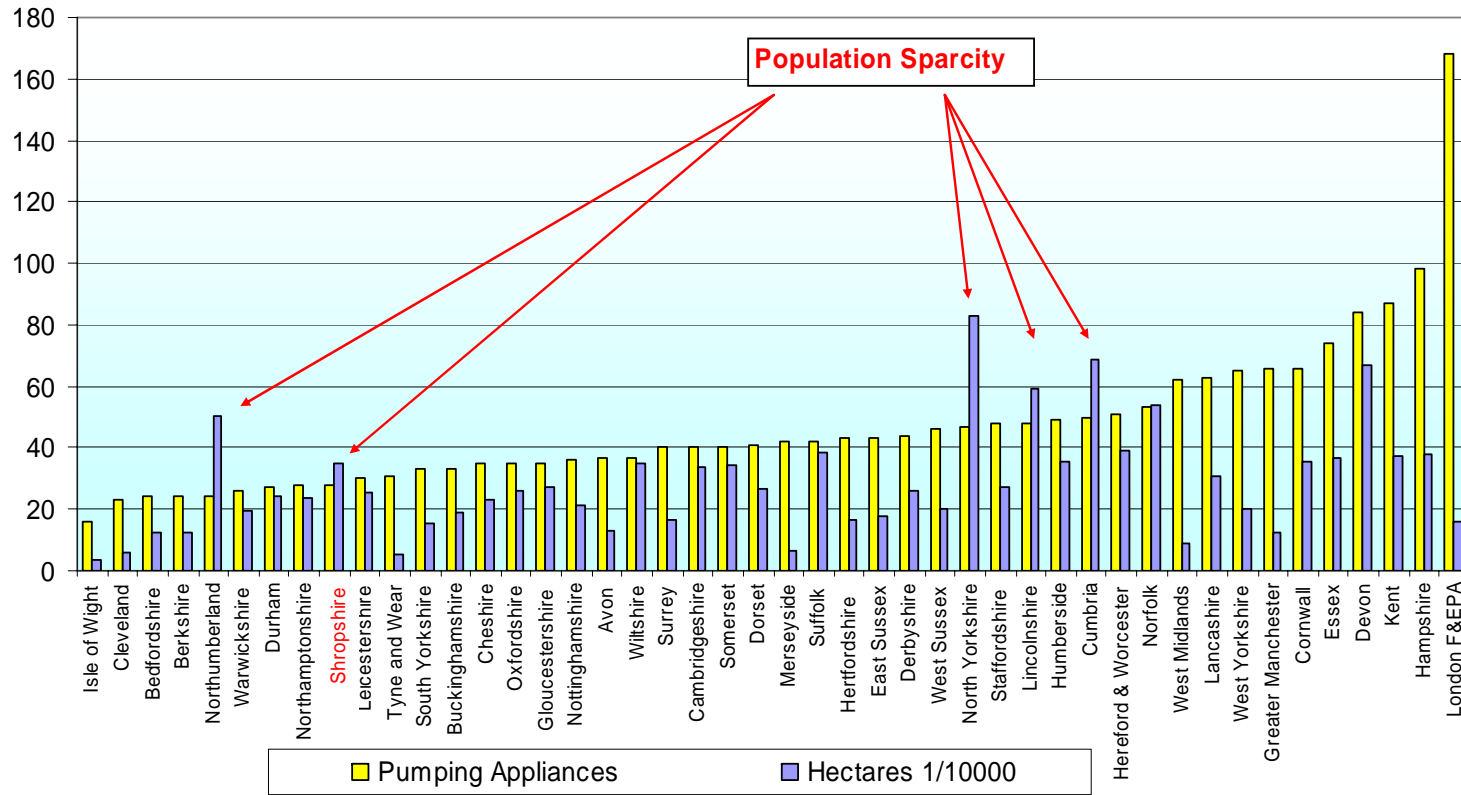
Correlation 0.1879





# Pumps / Area

31. Area/Pumps

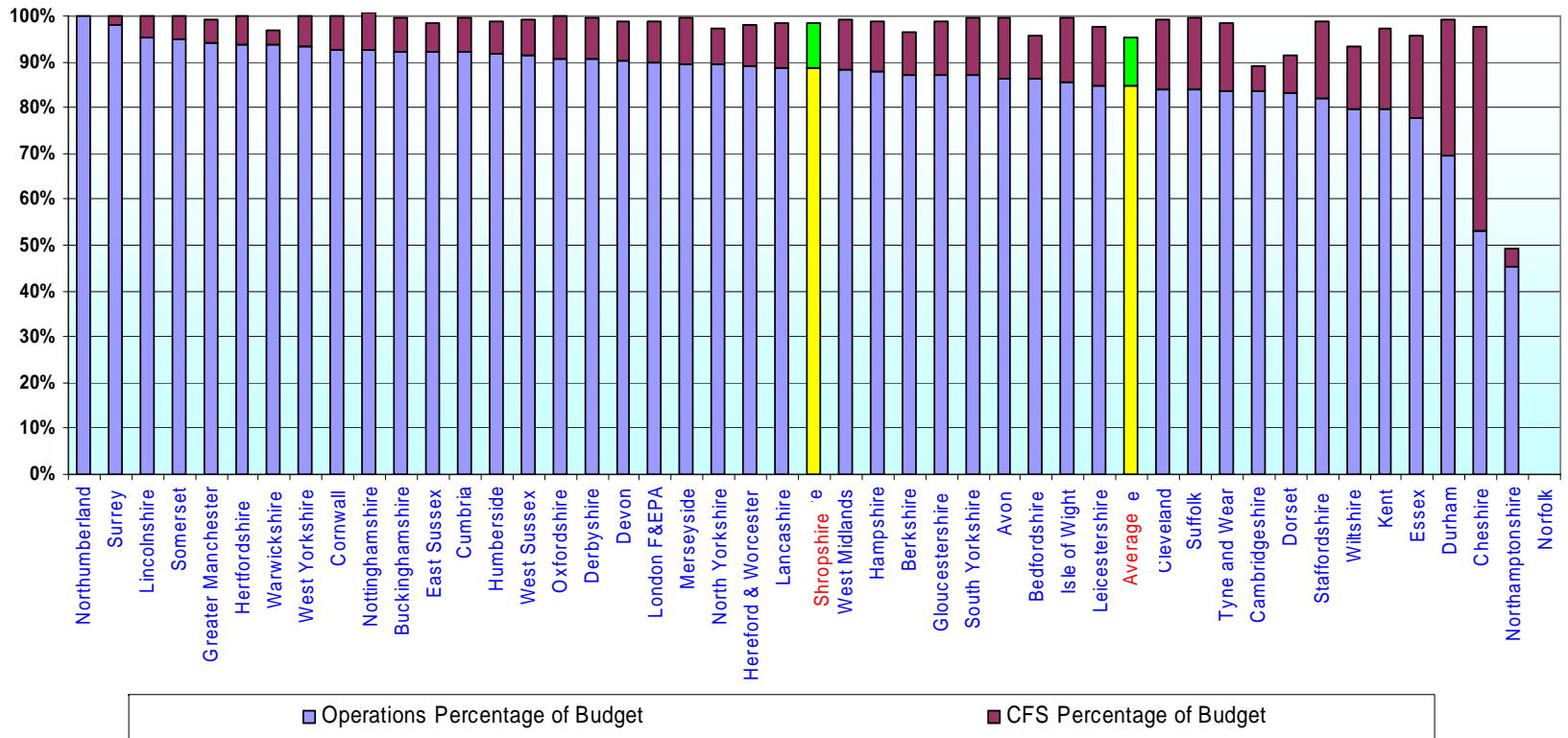






# Operational / CFS Costs

32. Ratio Between Ops and CFS Expenditure





# Thank You

## Questions?



42

**PUTTING SHROPSHIRE'S  
SAFETY FIRST**

